



Sāmoa Secondary Leaving Certificate

GEOGRAPHY 2016

QUESTION and ANSWER BOOKLET

Time allowed: 3 hours & 10 minutes

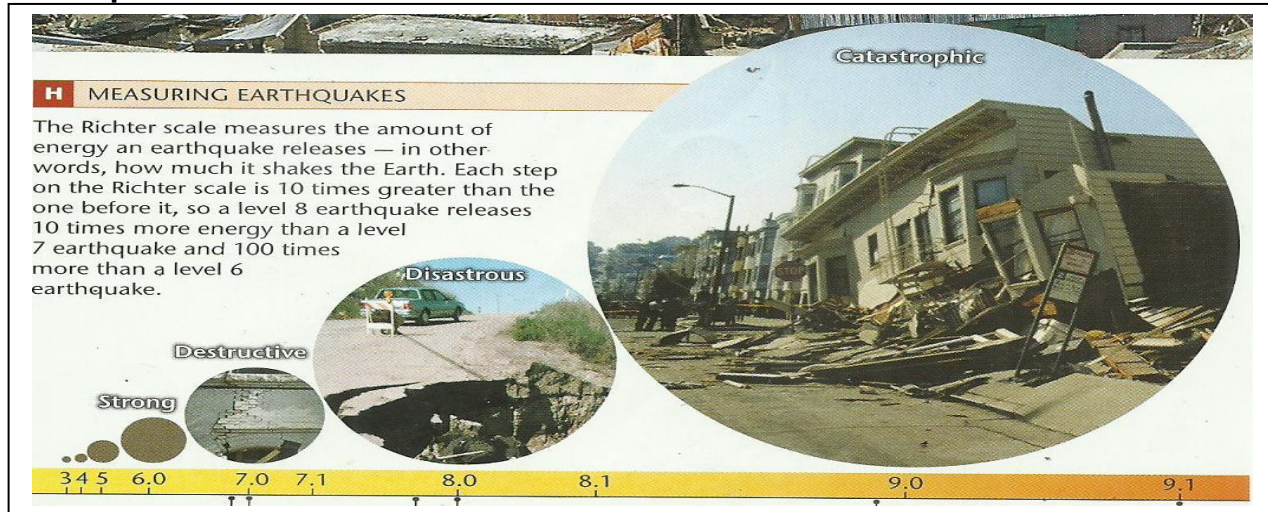
INSTRUCTIONS

1. You have 10 minutes to read **before** you start writing.
2. Write your **Student Education Number (SEN)** in the space provided on the top right hand corner of this page.
3. **ALL Strands are compulsory.** Write your answers in the spaces provided.
4. If you need more space for answers, ask the Supervisor for extra paper. Write your SEN on all extra sheets used and clearly number as per exam. Attach the extra sheets at the appropriate places in this booklet.

STRANDS	Page Number	Time (minutes)	Weighting
1. Physical Environment	2	36	20
2. Resources and their uses	7	36	20
3. Population Settlement	13	36	20
4. Development Studies-globalization and tourism	19	36	20
5. Environmental issues	24	36	20
TOTAL		180	100

CHECK! This booklet contains pages 2-29 in the right order.

YOU MUST HAND THIS BOOKLET TO THE SUPERVISOR AT THE END OF THE EXAMINATION.

PART I: The Features of Natural Hazards**Earthquakes**

Use the Resource below to answer Numbers 1 & 2.

1. Define the term earthquakes.

Skill Level 1

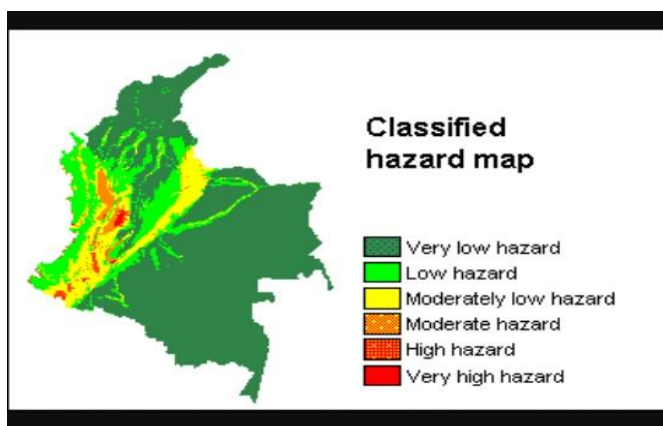
2. Describe TWO features of a catastrophic earthquake.

Skill Level 2

3. Name the category four cyclone that hit Sāmoa in 2012, causing widespread damages to urban infrastructures, notably causing the Vaisigano river to break its bank.

Skill Level 1

Part II: Hazard Maps, Causes and Effect



Use the Resource to answer Numbers 4 to 6.

4. What is a hazard map?

Skill Level 1

5. Explain why hazard maps are important to the public.

Skill Level 3

6. Define tectonic plates.

Skill Level 1

PART III: Monitoring Natural hazards

7. Circle the correct concept to match the sign below.



- (i) Early warning system
- (ii) Building codes
- (iii) Evacuation procedures

Skill Level 1

8. Cyclone Amos was forecasted to hit Samoa as a powerful category four system at the beginning of this year, but it weakened as it approached land.

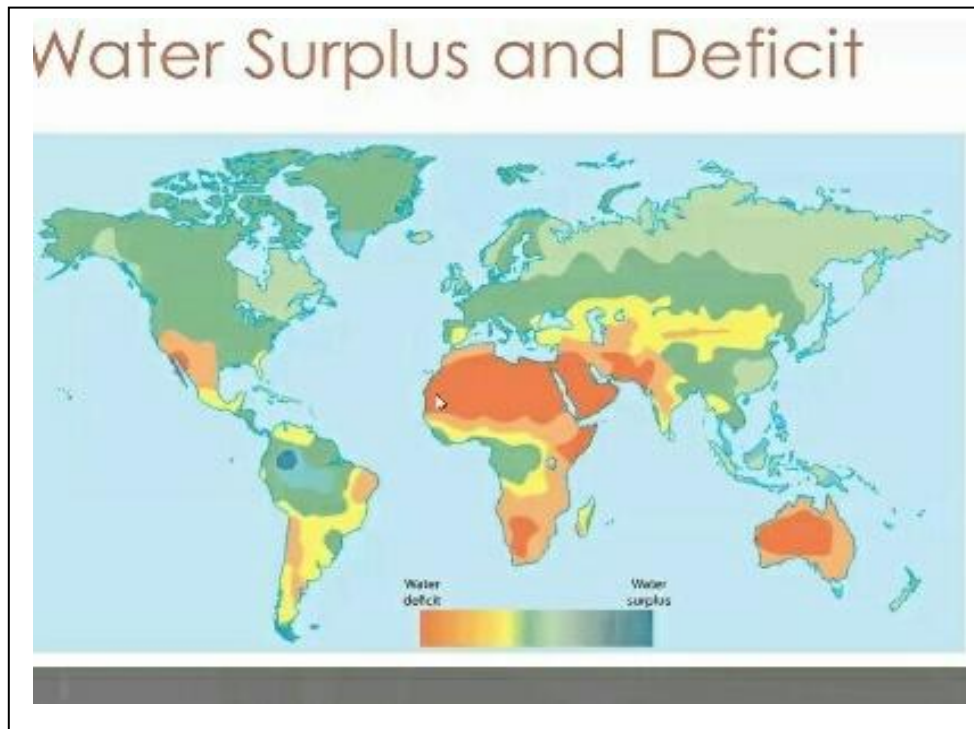
Use this case study and other examples from the South Pacific to discuss the effectiveness of strategies used in minimising impacts of tropical cyclones.

Skill Level 4

PART I: Water cycle and distribution

11. What is meant by water rationing?

Skill Level 1

Global Water Distribution map

Use the map to answer Number 12 & 13

12. Name on the map ONE water surplus area.

Skill Level 1

13. State the physical factor responsible for the water distribution in Western Australia.

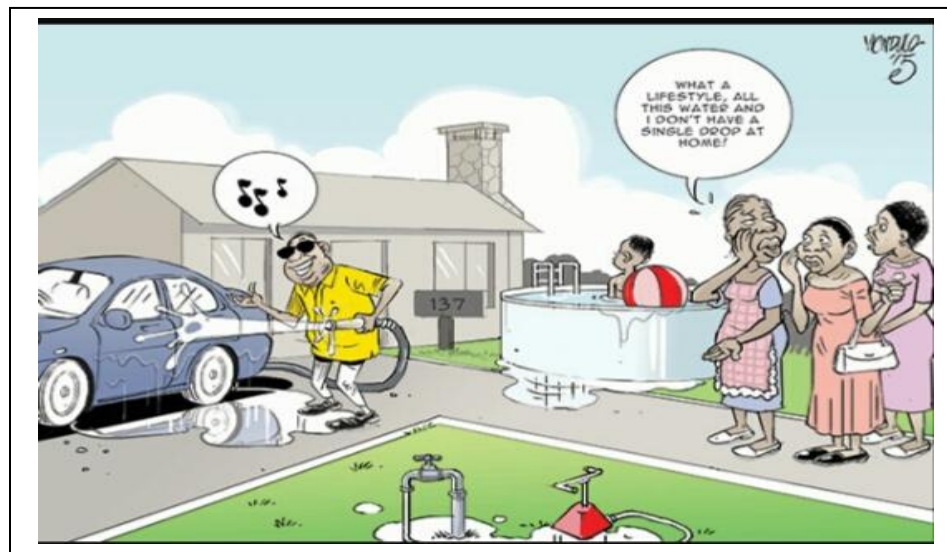
Skill Level 1

14. Describe the global patterns of freshwater distribution.

Skill Level 2

PART II: Water as a resource

Water use



Use the Cartoon to answer Number 15 to 17.

15. Name ONE use of water as shown in the cartoon.

Skill Level 1

16. Define the term *renewable resource*.

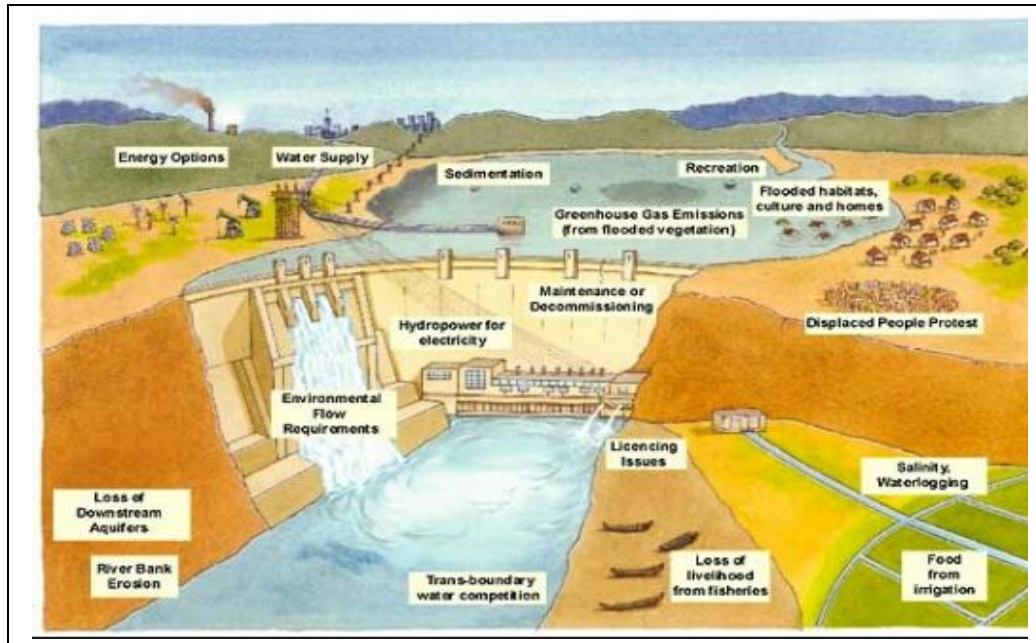
Skill Level 1

17. With the help of the cartoon, explain how people's perception of water varies from place to place.

Skill Level 3

PART III: Water use projects

A Multipurpose River Basin Project.



Use the sketched diagram to answer Number 18 & 19.

18. Name the well known multi-purpose river basin project built at the Nile River.

Skill Level 1

19. Discuss the effects of a multipurpose river basin.

Skill Level 4

--

PART IV: Water Conservation

20. Write a paragraph to **describe** some conservative methods of water uses in agriculture practice and **evaluate** their effectiveness. Use examples to illustrate your answer.

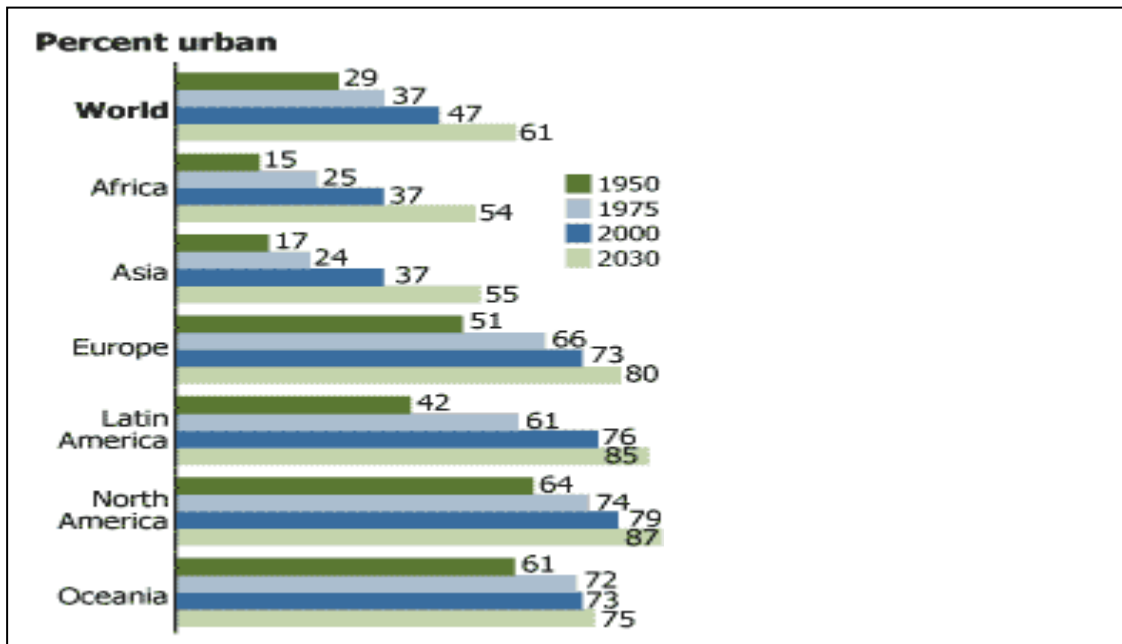
Write a 150-200 word paragraph.

[illegible]

PART I: The global patterns of urbanization

21. What is meant by urban settlement?

Skill Level 1



Use the graph to answer Number 22 & 23.

22. Compare and contrast the urbanization trends between developing and developed countries.

Skill Level 3

23. Describe TWO push factors that contribute to urbanization in developing countries.

Skill Level 2

PART II: Effects of urban growth

Urban sprawl



Use the Resource to answer Number 24 & 25.

24. What is meant by urban sprawl?

Skill Level 1

25. Describe the negative impacts of urban sprawl.

Skill Level 2

PART III: Urban planning and management

26. Define the term *satellite towns*.

Skill Level 1

27. State ONE example of urban management strategy used in developed countries for urban expansion.

Skill Level 1

28. Name ONE strategy been implemented to reduce urban pollution in Apia city.

Skill Level 1

29. Explain the relationship between city ghettos or slums and urban issues.

Skill Level 3

PART IV: Urbanisation

30. The establishment of the new Salelologa Township is one of the strategies by the Samoan government to address urbanization issues.

Identify the appropriate geographic concept for this strategy and **evaluate** whether this strategy is successful or not.

Write a 150-200 word paragraph.

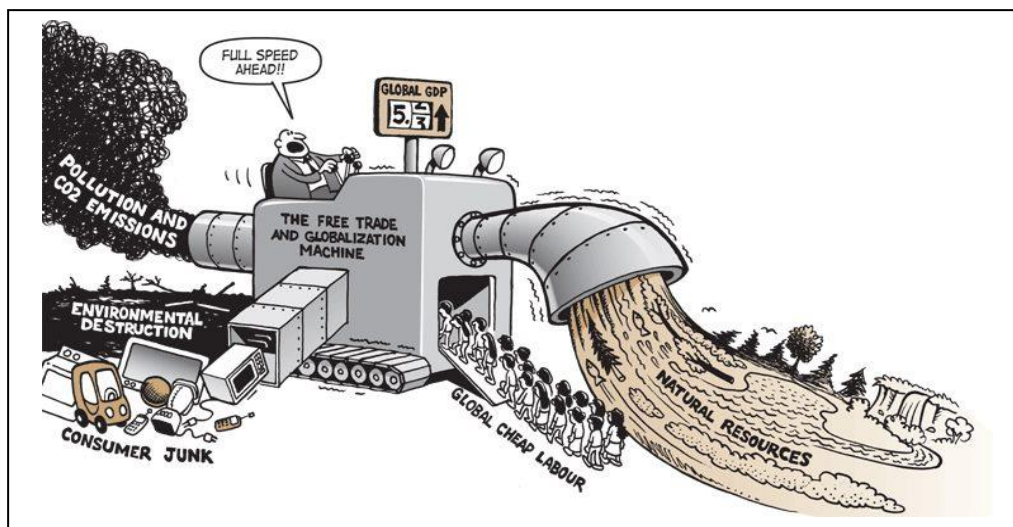
[illegible]

STRAND 4 Development Studies - Globalisation and Tourism Weighting 20

PART I: Globalization and development

31. What is meant by a global village?

Skill Level 1



Skill Level 3

Use the cartoon to answer Number 32 & 33.

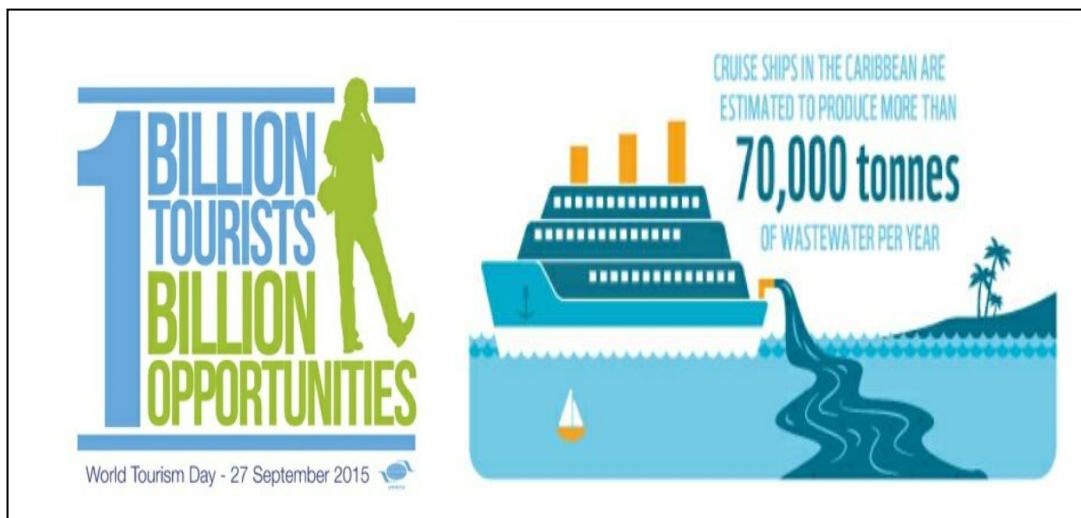
32. Explain the advantages and disadvantages of global cooperation amongst the countries of the world.

-
33. State the attitude of the driver towards globalisation.

Skill Level 1

Part II: Tourism development

Effects of Tourism



Use the Resource to answer Number 34 and 35.

34. Describe how globalization has helped the growth of tourism.

Skill Level 2

35. Explain the negative impacts of tourism.

Skill Level 3

PART III - National Tourism and Ecotourism

36. Name ONE example of an ecotourism activity in Samoa.

Skill Level 1

37. Describe ONE marketing strategy implemented by the Samoa Tourism Authority.

Skill Level 2

38. Identify ONE physical hindrance to the implementing of Sāmoa's National Tourism Strategy.

Skill Level 1

39. State how ecotourism can achieve sustainable development.

Skill Level 1

PART IV: Benefits of Tourism

40. Sāmoa has recently become a member of the World Trade Organisation (WTO). Write a paragraph to **discuss** the economic benefits of this membership to Sāmoa. Provide examples to illustrate your answer. Include in your answer a **definition** of globalisation.

Write a 150-200 paragraph.

STRAND 5**Environmental Issues****Weighting 20****PART I: Climate Change**

41. What is the El Nino phenomena?

Skill Level 1



Use the Cartoon to answer Number 42 to 44.

42. State ONE human activity that contributes to greenhouse gases.

Skill Level 1

43. Explain the environmental effects of climate change.

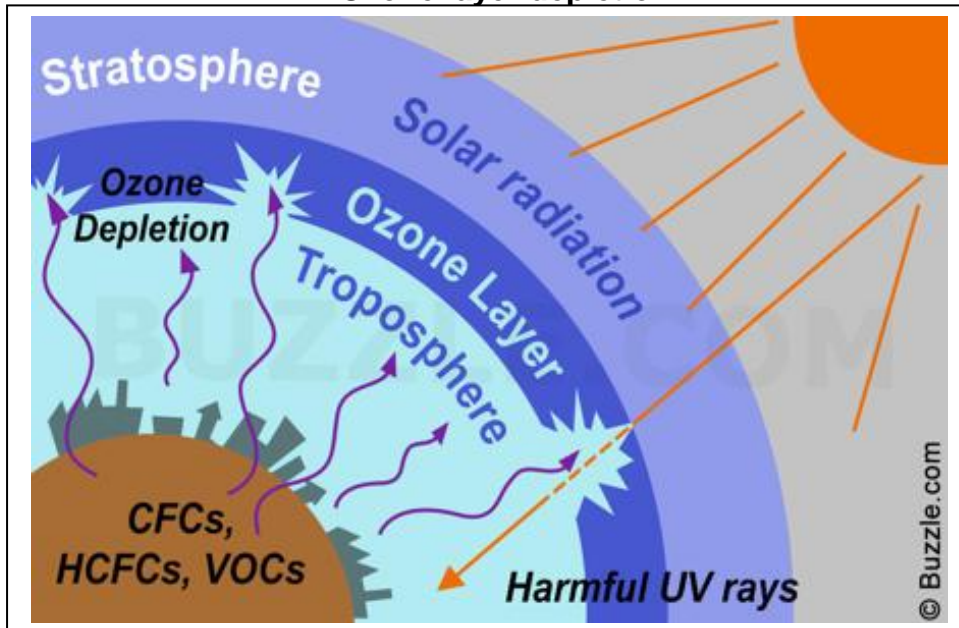
Skill Level 3

44. Identify ONE environmentally friendly method to reduce the negative effects of climate change.

Skill Level 1

PART II: Responses to climate change

Ozone layer depletion



Use the Resource to answer Number 45 to 47.

45. Describe the features of the ozone layer depletion.

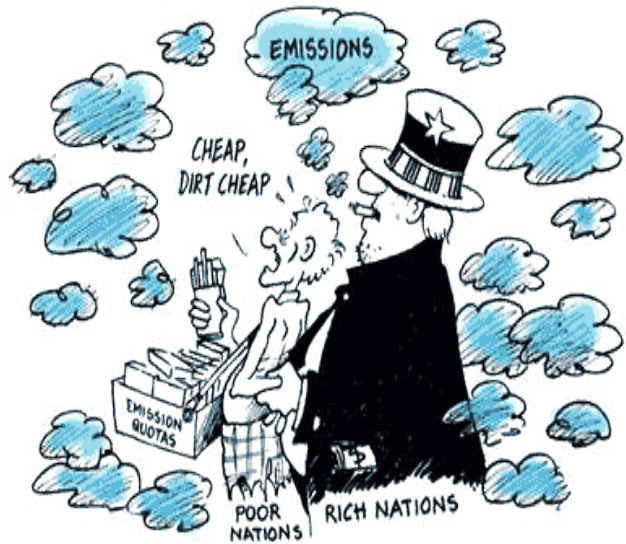
Skill Level 2

46. Name the most appropriate International Protocol that addresses the ozone layer depletion issues.

Skill Level 1

47. Describe what the protocol is trying to ensure.

Skill Level 2



Use the Resource to answer Number 48 & 49.

48. Explain why some developed countries do not fully commit to international binding climate change deals.

Skill Level 3

49. Identify the **type** of countries that will be most affected by climate change.

This image shows a single sheet of white paper with horizontal blue or grey ruling lines. The lines are evenly spaced and run across the width of the page. There are approximately 20 lines visible. The paper has a slight shadow on its right side, suggesting it's resting on a surface.

