

STUDENT EDUCATION NUMBER



GOVERNMENT OF SAMOA
MINISTRY OF EDUCATION, SPORTS AND CULTURE

Samoa School Certificate

MUSIC

2018

QUESTION and ANSWER BOOKLET

Time allowed: 3 Hours & 10 minutes

INSTRUCTIONS

1. You have 10 minutes to read **before** you start the exam.
2. Write your **Student Education Number (SEN)** in the space provided on the top left hand corner of this page.
3. **Answer ALL QUESTIONS.** Write your answers in the spaces provided in this booklet.
4. If you need more space, ask the Supervisor for extra paper. Write your SEN on all extra sheets used and clearly number the questions. Attach the extra sheets at the appropriate places in this booklet.

CURRICULUM STRANDS		Page	Time (min)	Weighting
STRAND 1:	GENERAL KNOWLEDGE	2	54	30
STRAND 2:	PERFORMANCE	7	72	40
STRAND 3:	COMPOSITION	10	26	20
STRAND 4:	ESSAY WRITING	11	18	10
TOTAL			180	100

Check that this booklet contains pages 2-12 in the correct order and that none of these pages are blank.

HAND THIS BOOKLET TO THE SUPERVISOR AT THE END OF THE EXAMINATION

1. List the following dynamics in order from softest to loudest.

- (a) *piano* _____
- (b) *fortissimo* _____
- (c) *mezzo forte* _____
- (d) *pianissimo* _____
- (e) *forte* _____

SL 1

2. Which Italian word means gradually slowing down?

- A. *crescendo*
- B. *ritardando*
- C. *cantabile* _____
- D. *presto*


SL 1

3. What is the name of this symbol?



SL 1

4. What is indicated by this symbol? (Circle the right answer).

- A. Getting softer
 - B. Slowing down
 - C. Speeding up
 - D. Pausing
- 

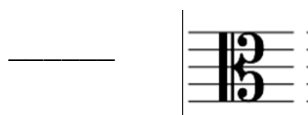
SL 1

5. Match the picture of each clef with its correct name.

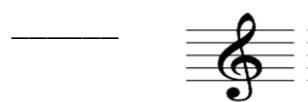
A. Treble Clef



B. Bass Clef



C. Alto Clef



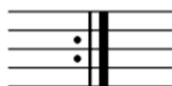
SL 1

6. How many bars are in the following excerpt of music?



SL 1

7. What does this symbol indicate?



SL 1

8. Which of the following symbols lowers the indicated pitch one semi-tone?



SL 1

9. Which of the following describes a medium-loud dynamic?

- A. *fff*
- B. *mp*
- C. *mf*
- D. *pp*

SL 1

10. Which Italian word indicates a fast and lively tempo?

- A. *Adagio*
- B. *Lento*
- C. *Allegro*
- D. *Andantino*

SL 1

11. Circle the bar that is meant to be played staccato?



SL 1

12. Add a time signature to each melody.



SL 2



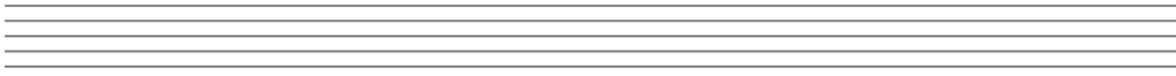
13. Label the following two intervals and indicate if they are major, minor, or perfect.



SL 2

(a) _____ (b) _____

14. Write the key signature for D major. What is its relative minor key?



SL 2

15. Write the pitch of each note (above) and indicate its type below (crochet, minim, quaver, etc.)



SL 4

16. Construct a one-octave G-Major ascending scale using semibreve notation. Include all necessary sharps and flats. Use a treble clef.



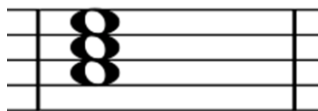
SL 3

17. Add the correct clef, and appropriate sharps and flats to make these triads accurate.

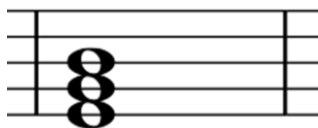
(a) D major



(b) C minor



(c) E-flat major



SL 3

18. Write the note **above** the notated note to create the named harmonic interval.

(a) Perfect 4th



SL 3

(b) Major 7th



(c) Minor 3rd



Study the melody and answer the following questions.



19. (a) How many musical phrases are notated?

(b) How many bars are in each phrase?

(c) What key is the melody in?

(d) Describe what the dynamics indicate throughout the melody.

(e) Name the pitches of each minim in the excerpt.

1. _____ 2. _____ 3. _____ 4. _____ 5. _____ 6. _____

(f) What is indicated by the word *Allegro*?

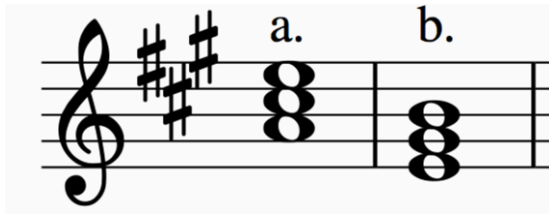
	SL 1
a.	
b.	
c.	

SL 2

	SL 3
1-3	
	SL 3
4-6	

SL 1

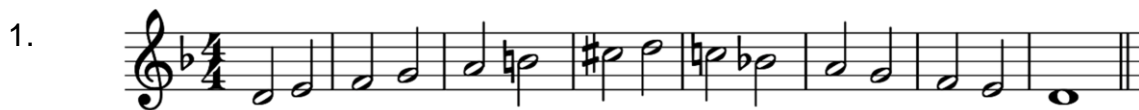
Study the following two bars and answer the questions below.



20. (a) What is the major key signature? _____
- (b) What is its relative minor? _____
- (c) Label each triad and indicate its quality (major and minor)
- (i) _____ (ii) _____
- (d) Which triad (i) or (ii) represents the Tonic? _____
- (e) Which triad (i) or (ii) represents the Dominant? _____

	SL 2
a.	
b.	
c.(i)	
c.(ii)	
d.	
e.	

21. Use the key signatures to label **each scale below**. For minor scales, identify whether they are melodic, natural, or harmonic minor scales.



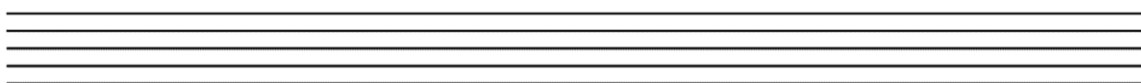


SL 3
SL 3

3.



22. Write a C Harmonic Minor scale on the staff below. Use the *treble clef*.



SL 2
SL 3

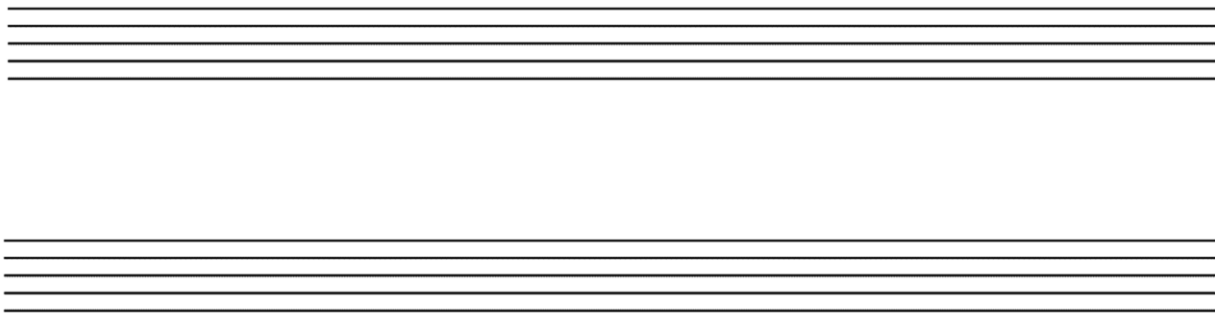
23. Define one of the following Italian words or phrases indicating musical character and describe what you might do to play a piece in the style of that word.

- (a) *Maestoso*
- (b) *Cantabile*
- (c) *Dolce*
- (d) *Con fuoco*

SL 2
SL 3

24. Compose and notate a complete 8-bar melody in the staff below.

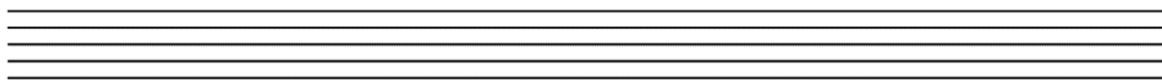
- The melody should be in C major
- Use $\frac{3}{4}$ time signature
- Include dynamics
- Include a word indicating tempo (allegro, lento, adagio, etc.)
- Use at least 3 different note or rest values (breve, minim, crochet, quaver etc.)



SL 1
SL 2
SL 3
SL 4

25. Re-write the melody in $\frac{3}{4}$ time using notes and rests that are twice the value (slower).

(Hint: there will be 8 bars)



SL 1
SL 2
SL 3
SL 4

26. Write an essay in response to **ONE** of the following questions:

1. Discuss what is meant by the Western Classical music terms: Baroque, Classical and Romantic.
2. Describe the tools a composer can use to impact a performer's interpretation of character and expression within a piece.
3. Describe four qualities of a successful musical performance.

SL 1
SL 2
SL 3
SL 4

STUDENT EDUCATION NUMBER									

MUSIC

2018

(For Scorers only)

CURRICULUM STRANDS	Weighting	Scores	Check Scorer
PART 1: GENERAL KNOWLEDGE	30		
PART 2: PERFORMANCE	40		
PART 3: COMPOSITION	30		
PART 4: ESSAY WRITING	20		
TOTAL	100		