

STUDENT EDUCATION NUMBER									



Government of Samoa

# Sāmoa School Certificate

## MUSIC

### 2016

## QUESTION and ANSWER BOOKLET

Time allowed: 3 hours & 10 minutes

### INSTRUCTIONS:

1. You have 10 minutes to read **before** you start writing.
2. Write your **Student Education Number (SEN)** in the space provided on the top right hand corner of this page.
3. **ALL Strands are compulsory.** Write your answers in the spaces provided.
4. If you need more space for answers, ask the Supervisor for extra paper. Write your SEN on all extra sheets used and clearly number the questions. Attach the extra sheets at the appropriate places in this booklet.

STRANDS	Page number	Time (minutes)	Weighting
1. General Knowledge	2	54	30
2. Composition	6	54	30
3. Performance	9	72	40
		<b>180</b>	<b>100</b>

**CHECK!** This booklet contains pages 2-13 in the right order.

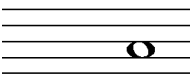
**YOU MUST HAND THIS BOOKLET TO THE SUPERVISOR AT THE END OF THE EXAMINATION.**

**STRAND 1**

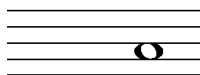
**General Knowledge**

**Weighting 30**

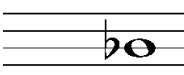
1. Write the correct **clef** to identify each of these named notes.

a.   
A

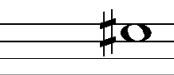
Skill level 1

b.   
C

Skill level 1

c.   
B

Skill level 1

d.   
G

Skill level 1

2. Give the enharmonic names of the following notes.

	Note	Enharmonic Name
a.	Ab	
b.	Cb	
c.	E <sup>⊖</sup>	
d.	B	

Q2	Skill Level 1
a.	
b.	
c.	
d.	

3. Refer to the Time Signature to answer the following questions.

**4**  
**4**

(a) Is it a simple or compound Time Signature?

\_\_\_\_\_

Skill level 1

(b) Which note receives one beat?

\_\_\_\_\_

Skill level 1

(c) How long is a Dotted Minim rest?

\_\_\_\_\_ beats

Skill level 2

4. Add bar lines to each of the given tunes.

Skill level 2

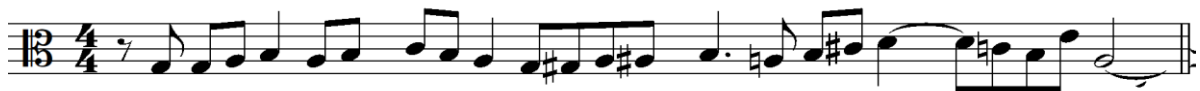
(a)

*Symphony in Bb Trio Haydn*



(b)

*In the deepest need Bach*



Skill level 2

5. Name the following chords:

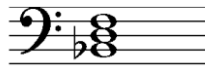
(a)



\_\_\_\_\_

Skill level 3

(b)



\_\_\_\_\_

Skill level 3

(c)



\_\_\_\_\_

Skill level 3

6. The curved line which joins or connects two notes of the same pitch is called a \_\_\_\_\_

Skill level 1



**STRAND 2**

**Composition**

**Weighting 30**

8. Complete the following sentences.

a. Interval is the \_\_\_\_\_ between two notes.

Skill level 1

b. A " sign \_\_\_\_\_ a note by a \_\_\_\_\_

Skill level 1

9. Give the number (eg 3rd, 5th) of each of these melodic intervals.

(a)



Skill level 1

(b)



Skill level 1

(c)



Skill level 1

10. The interval between E and F is a semitone. What is its quality?

\_\_\_\_\_

Skill level 1

11. Which **minor scale** has NO sharps or flats in its key signature?

Scale of \_\_\_\_\_

Skill level 1

12. Give the structure of the harmonic minor scale.

\_\_\_\_\_

Skill level 3

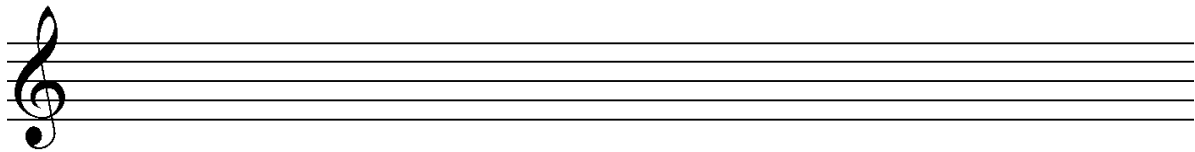
13. Put the correct accidentals to form a C harmonic minor ascending scale.  
Mark the intervals.



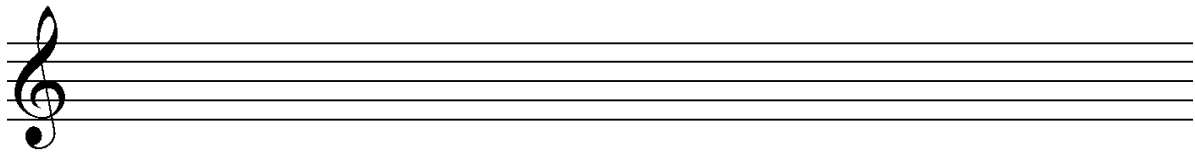
Skill level 3

14. With Key Signature, draw the major scale of F and its relative harmonic minor scale ascending and descending in minims.  
Mark the intervals.

F Major Scale

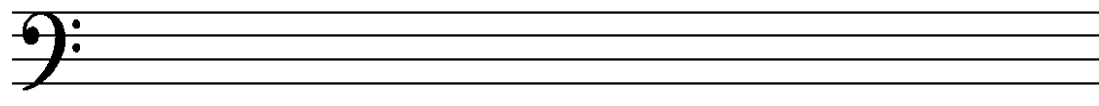


Relative minor scale



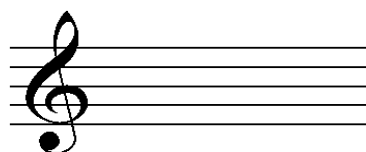
Skill level 4

15. (a) Draw the Diatonic Scale of C major ascending



Skill level 2

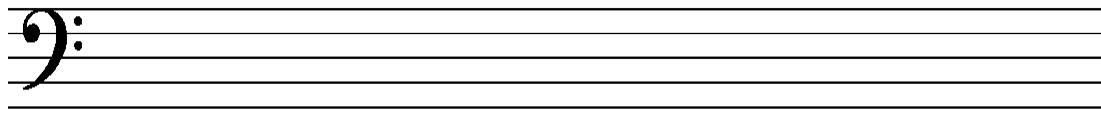
(b) A Major as a broken chord



Skill level 2

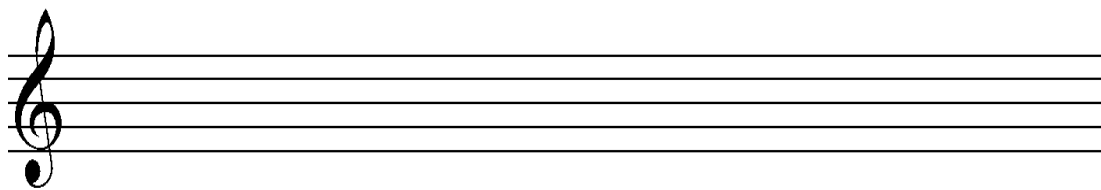
16. Write the following scales:

- (a) A major ascending scale in quarter notes on the Bass staff.  
Label the semitones.



Skill level 2

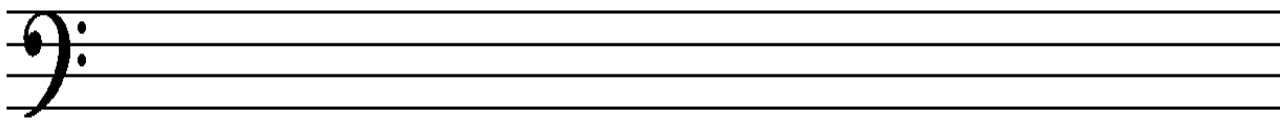
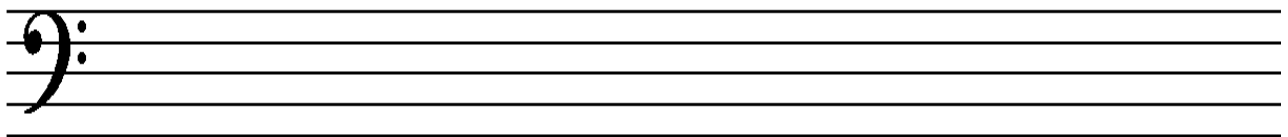
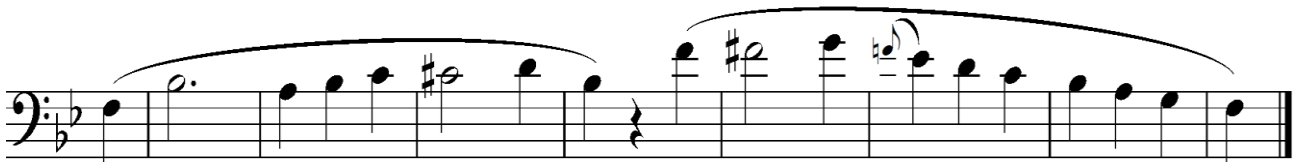
- (b) E<sup>♭</sup>Major ascending and descending scale in half notes on the G staff.  
Label the tones and semitones.



Skill level 3

17. Transpose the following melody a semitone higher and give the sol-fa names above each note.

Add the key signature.



Skill level 4



**STRAND 3**

**Performance**

**Weighting 40**

1. Define the following terms:

a. *Tone*

---

---

---

Skill level 1

b. *Articulation*

---

---

---

Skill level 1

c. *Phrasing*

---

---

---

Skill level 1

d. *Balance*

---

---

---

Skill level 1

2. Define the following Italian terms of expressions:

a. *Largo*

---

---

Skill level 1

b. *Moderator*

---

---

Skill level 1

c. *Accelerando*

---

---

Skill level 1

d. *A tempo*

---

---

Skill level 1

e. *Lento*

---

---

Skill level 1

3. Refer to the following piece and answer the following questions.

The image shows two staves of musical notation in 2/4 time. The first staff contains a melody of 10 measures: a quarter note, two eighth notes, a quarter note, two eighth notes, a quarter note, two eighth notes, a quarter note, two eighth notes, a quarter note, and a half note marked 'Fine'. The second staff contains a continuation of the melody starting with a half note marked 'D.C. al Fine'.

a. Which beat is strongest in the bar? Circle an example.

---

Skill level 2

b. How many places in the piece would you breathe?

---

Skill level 2

c. Explain the meaning of D.C al Fine.

---

---

---

Skill level 3

d. The form of the piece is AABA. Use the markings *repeat*, *D.C. al Fine* and *Fine* to explain the form.

---

---

---

---

---

Skill level 4

4. Write the dynamics *f*, *pp*, *ff*, *mp*, *mf*, *mp* in the correct order from the quietest to the loudest.

---

Skill level 3

5. Define 'song'

---

---

---

Skill level 2

6. Refer to the following music and answer the questions.



a. The music is written in the Key of \_\_\_\_\_

Skill level 1

b. Number the bars directly onto the music above.

Skill level 2

c. Explain the sign  as used in the music.

Use bar numbers to explain.

---



---



---



---

Skill level 3

d. Is the first note the tonic note of the key?

\_\_\_\_\_

Skill level 1

e. Explain the duration of the dotted crotchet stating the value of the dot in relation to the principal note.

---



---



---

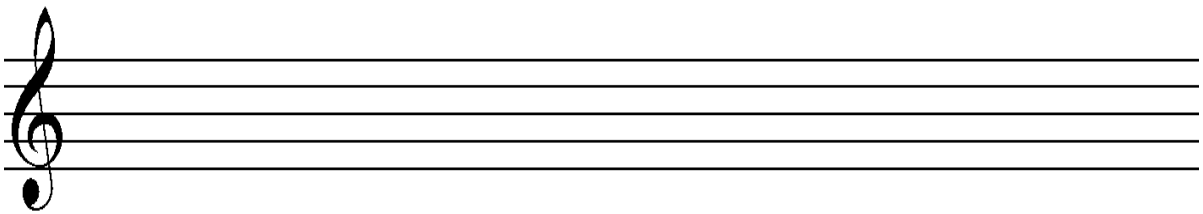
Skill level 3

f. How many dotted notes are there in the music?

\_\_\_\_\_

Skill level 1

g. Draw the scale of the above music based on its key and label the 1st, 4th and 5th degrees and draw their chords (triads) in block form in the second staff provided and label them.



Skill level 4