

STUDENT EDUCATION NUMBER

--	--	--	--	--	--	--	--	--	--



GOVERNMENT OF SAMOA  
MINISTRY OF EDUCATION, SPORTS AND CULTURE

---

# Samoa Secondary Leaving Certificate

---

# MUSIC

## 2017

### QUESTION and ANSWER BOOKLET

Time allowed: 3 Hours & 10 minutes

#### INSTRUCTIONS

1. You have 10 minutes to read **before** you start the exam.
2. Write your **Student Education Number (SEN)** in the space provided on the top left hand corner of this page.
3. **Answer ALL QUESTIONS.** Write your answers in the spaces provided in this booklet.
4. If you need more space, ask the Supervisor for extra paper. Write your SEN on all extra sheets used and clearly number the questions. Attach the extra sheets at the appropriate places in this booklet.

CURRICULUM STRANDS	Page	Time (min)	Weighting
STRAND 1: GENERAL KNOWLEDGE	2	58	32
STRAND 2: COMPOSITION	5	50	28
STRAND 3: PERFORMANCE	9	72	40
<b>TOTAL</b>		<b>180</b>	<b>100</b>

Check that this booklet contains pages 2-15 in the correct order and that none of these pages is blank.  
**YOU MUST HAND THIS BOOKLET TO THE SUPERVISOR AT THE END OF THE EXAMINATION**

1. Fill in the following. Give both names.

(a) **h** is a \_\_\_\_\_ or a \_\_\_\_\_ note

SL 1

(b)  is a \_\_\_\_\_ or a \_\_\_\_\_ note

SL 1

(c) **W.** is a \_\_\_\_\_ or a \_\_\_\_\_ rest

SL 1

(d) **X.** is a \_\_\_\_\_ or a \_\_\_\_\_ rest

SL 1

2. Explain the value of the dot in a dotted note. Illustrate using the dotted quarter note.

---

---

---

---

SL 2

3.  $\frac{6}{8}$  is an example of a compound time.

(a) What dotted note is the main beat?

---

SL 2

(b) Write the counting of the following.

SL 2



(c) Add bar lines and the appropriate time signature.

SL 3



4. Name or draw the following:

(a) # \_\_\_\_\_

SL 1

(b) ! \_\_\_\_\_


SL 1

(c) % \_\_\_\_\_

SL 1

(d) Natural Sign \_\_\_\_\_

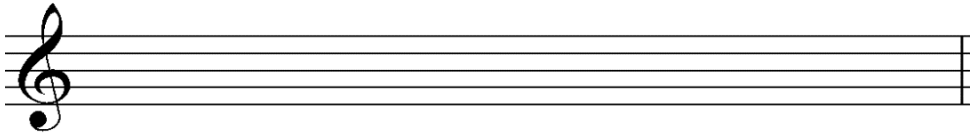
SL 1

(e)  \_\_\_\_\_

SL 1

5. Construct an ascending major scale in minims with four sharps. Add flats appropriately. Mark the intervals.

SL 3



6. Name the following intervals e.g. Major 2nd



SL 3



SL 3

7. Name the following keys.



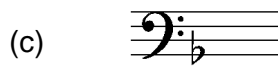
\_\_\_\_\_

SL 2



\_\_\_\_\_

SL 2



\_\_\_\_\_


SL 2

8. Transpose the given music a semitone lower. Mark (\*\*) an Imperfect Cadence.


SL 4

*Fonoti PJ Sili leriko*

9. Name ONE possible key signature for the following intervals:

(a)  \_\_\_\_\_

SL 3

(b)  \_\_\_\_\_

SL 3

(c)  \_\_\_\_\_

SL 3

10. Name these notes:

(a)  \_\_\_\_\_


SL 1

(b)  \_\_\_\_\_

SL 1

(c)  \_\_\_\_\_

SL 1

11. What kind of Time is  ?

\_\_\_\_\_ Simple Triple Time \_\_\_\_\_

SL 1

12. Write an example of a compound Triple time.

\_\_\_\_\_ 9/8 \_\_\_\_\_

SL 1

13. Study the following melody to answer (a) to (c).

Violin **Maestoso**

Vln. **a tempo**

(a) How many beats in a bar?

\_\_\_\_\_

SL 1

(b) Which notes should sound the softest? Circle the notes on the score.

SL 1

(c) What is a *fermata*? e.g. in bar 3.

\_\_\_\_\_  
\_\_\_\_\_

SL 1

14. Define a *maestoso*.

\_\_\_\_\_  
\_\_\_\_\_

SL 2

15. Discuss the following music with reference to its melodic shape. Identify with circles the highest and lowest notes and mark the climax with an \*.

♩=200

Bassoon

Melodic shape:

---



---



---



---



---



---

SL 4



16. Define the following terms:

(a) *Tempo*

---

---

SL 1

(b) *Balance*

---

---

SL 1

(c) *Timbre*

---

---

SL 1

(d) *Pitch*

---

---

SL 1

(e) *Intonation*

---

---

SL 1

Refer to the following melody below to answer (a) to (g).

**Allegro con moto** ♩.=120

Tuba

4 5 6 FINE

17. Give the meaning of the following:

(a) *Allegro con moto*

\_\_\_\_\_

SL 1

(b) ♩.=120

\_\_\_\_\_

SL 1

(c)

\_\_\_\_\_

SL 1

(d)

\_\_\_\_\_

SL 1

(e) How are the notes in bar 2 to be played?

\_\_\_\_\_

SL 1

(f) Define the term FINE.

\_\_\_\_\_

SL 2

(g) Does the melody use all the notes in the D major scale?

\_\_\_\_\_

SL 2

18. Arrange the following dynamics from the softest to the loudest.

*f*    *p*    *mp*    *ff*    *pp*    *mf*

\_\_\_\_\_

SL 3

19. Arrange the given terms from fastest to slowest.

Lento    Andante    allegro    Andantino    Allegretto

\_\_\_\_\_

SL 3

Study the melody to answer (a) to (e).

The image shows a musical melody in 3/4 time, consisting of 10 numbered notes. The notes are: 1. Quarter note, G4; 2. Quarter note, A4; 3. Quarter note, B4; 4. Quarter note, C5; 5. Quarter note, D5; 6. Quarter note, E5; 7. Quarter note, F5; 8. Quarter note, G5; 9. Quarter note, A5; 10. Quarter note, B5. The melody is written on a single staff with a treble clef and a key signature of one sharp (F#).

20. (a) Rewrite the first 2 bars of the above melody in  $\frac{6}{8}$  Compound Time.

SL 4

A blank musical staff with a treble clef, intended for the student to rewrite the first two bars of the melody in 6/8 compound time.

(b) From bar 1 to 10, how many times would a player breathe?

\_\_\_\_\_

SL 1

(c) Which beat of the bar is the strongest?

\_\_\_\_\_

SL 1

(d) Write the bar numbers below where a Chromatic scale is used.

\_\_\_\_\_  
\_\_\_\_\_

SL 3

(e) Explain the playing of the notes which are affected by a tie in bars 1 and 2.

\_\_\_\_\_  
\_\_\_\_\_  
\_\_\_\_\_

SL 3

21. With reference to dynamics and tempo, explain how a soprano would sing the following music. Refer to the lyrics to explain your answer.

Mass in F Minor

Anton Bruchner

mi- - se - re - re, mi - se-re-re no - bis.

---

---

---

---

---

---

---

---

---

---

---

---

---

---

---

---

---

---

---

---

---

---

---

---

SL 4

22. Fit the given verses to the following tune.

SL 4

1. Sleep my child and | peace attend thee |  
All through the | night |  
Guardian angels | God will send thee |  
All through the | night |  
Soft the drowsy | hours are creeping |  
Hill and dale in | slumber sleeping |  
I my loved ones | watch and keeping |  
All through the | night |

*All through the night*



Verse



Verse

STUDENT EDUCATION NUMBER									

# MUSIC

2017

(For Scorers only)

CURRICULUM STRANDS	Weighting	Scores	Chief Scorer
<b>STRAND 1: GENERAL KNOWLEDGE</b>	32		
<b>STRAND 2: COMPOSITION</b>	28		
<b>STRAND 3: PERFORMANCE</b>	40		
<b>TOTAL</b>	<b>100</b>		