

STUDENT EDUCATION NUMBER



GOVERNMENT OF SAMOA
MINISTRY OF EDUCATION, SPORTS & CULTURE

Samoa Secondary Leaving Certificate

GEOGRAPHY

2020

QUESTION and ANSWER BOOKLET

Time allowed: 3 Hours & 10 minutes

INSTRUCTIONS

1. You have 10 minutes to read **before** you start the exam.
2. Write your **Student Education Number (SEN)** in the space provided on the top right hand corner of this page.
3. Answer **ALL QUESTIONS**. Write your answers in the spaces provided in this booklet.
4. If you need more space, ask the Supervisor for extra paper. Write your SEN on all extra sheets used and clearly number the questions. Attach the extra sheets at the appropriate places in this booklet.

STRANDS		Page Number	Time (minutes)	Weighting
STRAND 1:	PHYSICAL ENVIRONMENT	2	36	20
STRAND 2:	RESOURCES AND THEIR USES	10	36	20
STRAND 3:	POPULATION SETTLEMENT	17	36	20
STRAND 4:	GLOBALISATION AND TOURISM	25	36	20
STRAND 5:	ENVIRONMENTAL ISSUES-CLIMATE CHANGE	33	36	20
TOTAL			180	100

Check that this booklet contains pages 2-41 in the correct order and that none of these pages is blank.
YOU MUST HAND THIS BOOKLET TO THE SUPERVISOR AT THE END OF THE EXAMINATION.

PART I: The Features of Natural Hazards

Use the Resource 1 below and your knowledge to answer Questions 1 – 3.

RESOURCE 1:

Source: en.wikipedia.org/wiki/2009_Samoa_earthquake

The 2009 Samoa earthquake and tsunami took place on 29 September 2009 in the Southern Pacific Ocean, adjacent to the Kermadec-Tonga subduction zone. It was the largest earthquake of 2009.

1. The magnitude of earthquakes can be measured using scales. Name **ONE** of the scales.

	SL 1

2. List **TWO** features of an earthquake.

SL 2

3. Explain why the study of earthquakes is important.

[illegible]

SL 3

PART II: Causes, Effects and Responses

Use the Resource 2 below and your knowledge to answer Questions 4 – 5.

RESOURCE 2:



Source: https://en.wikipedia.org/wiki/Mount_Matavanu

Mt. Matavanu is an active volcano in Samoa. The most recent eruptions from Mt. Matavanu occurred between 1905 and 1911.

4. State **ONE** cause of volcanic eruption.

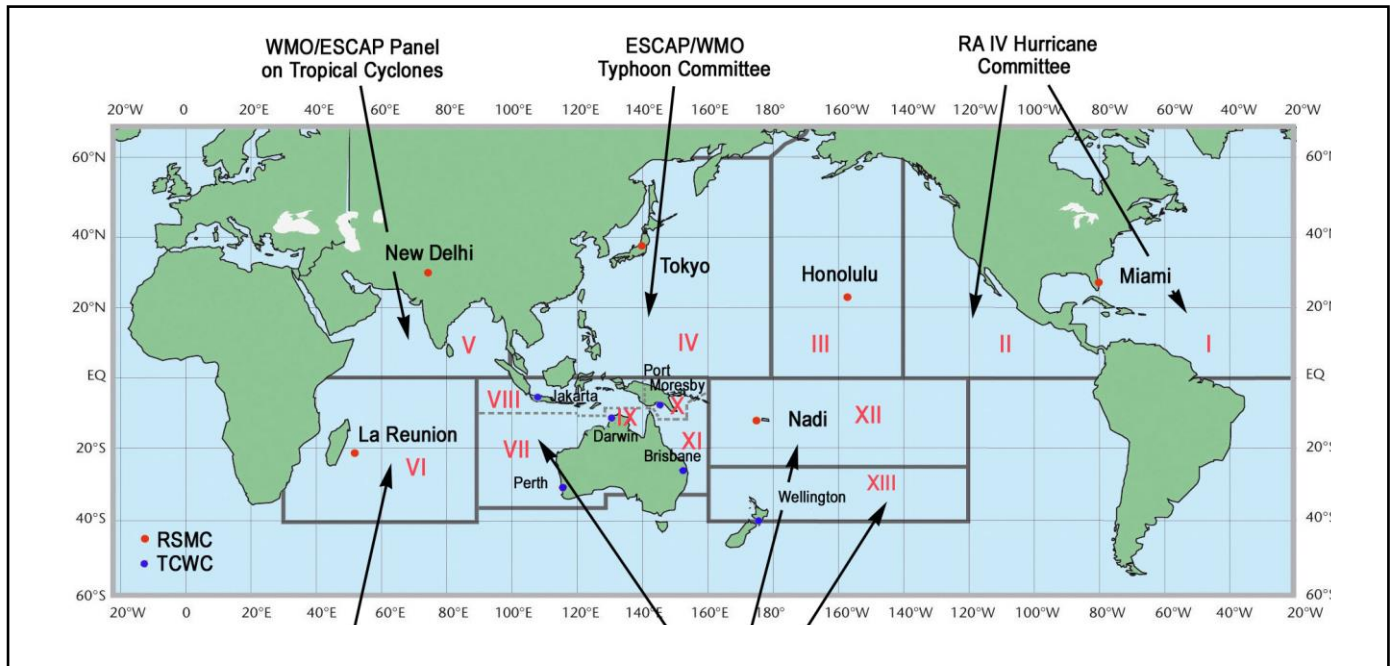
SL 1

PART III: Global Cyclone Monitoring

Use the Resource 3 below and your knowledge to answer Questions 7 – 8.

RESOURCE 3:

Worldwide Tropical Cyclone Centres



Source: https://www.nhc.noaa.gov/images/wmo_tcp.png

The World Meteorological Organization Tropical Cyclone Programme is tasked to establish national and regionally coordinated systems to ensure that the loss of life and damage caused by tropical cyclones are reduced to a minimum.

7. Name the government agency or ministry division responsible for detecting and warning Samoa of an approaching cyclone.

SL 1

9. Define the term **Cross Sectional Map**.

SL 1

PART IV: Case Study for Natural Hazards and Responses

The 2004 Tsunami, triggered by a powerful earthquake which affected 14 countries and killed more than 230,000 people, was one of the worst disasters in modern history. It claimed over 167,000 lives in Indonesia and it is still fresh in the minds of most people in the region. In Indonesia, a Tsunami warning was sent out lasting just over 30 minutes but it appears to have drastically underestimated the scale of the Tsunami that would follow.

Source: <https://theaseanpost.com/article/indonesia-needs-better-tsunami-warning-system>

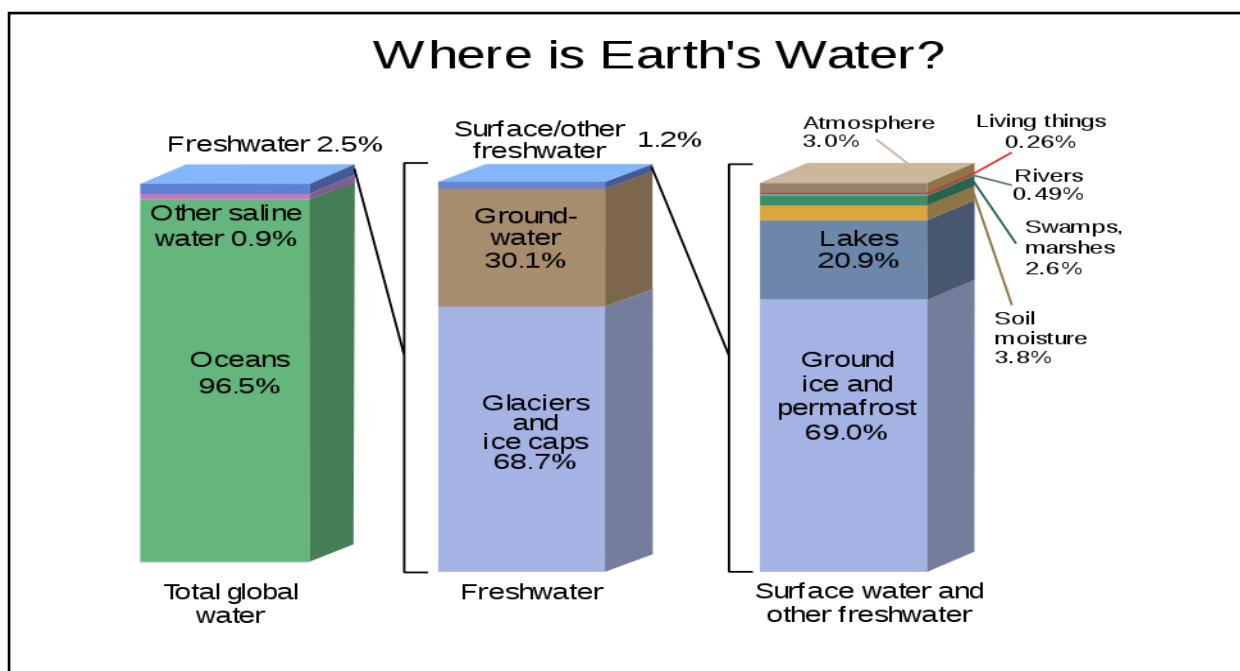
10. Explain the reasons behind the call for countries to develop an advanced warning system.

SL 3

[illegible]

PART I: Global Water Distribution

Use the Resource 4 below and your knowledge to answer Questions 11 – 13.

RESOURCE 4:

Source:- https://en.wikipedia.org/wiki/Water_distribution_on_Earth#/media/File:Earth's_water_distribution.svg

11. Define the term **Water Conservation**.

SL 1

12 Define the term **transpiration**.

SL 1

PART II: Water as a Resource

14. Name **ONE** purpose for which water is used.

SL 1

15. Describe how water is managed in a water scarcity area in the Pacific Region.

SL 2

16. Explain how Samoa benefits from rain harvesting projects.

SL 3

[illegible]

PART III: Water Use

Use the Resource 5 below and your knowledge to answer Questions 17 – 20.

RESOURCE 5:



Source: https://en.wikipedia.org/wiki/Three_Gorges_Dam#/media/File:ThreeGorgesDam-China2009.jpg

17. Explain the use and benefits of the dam project.

SL 3

This image shows a blank sheet of white paper with horizontal ruling lines. The lines are evenly spaced and run across the width of the page. There are no margins, text, or other markings on the paper.

18. Define the term Renewable Water Resource.

SL 1

19. State ONE way in which water is wasted.

SL 1

20. Evaluate the effectiveness of THREE Strategies used in managing fresh water.

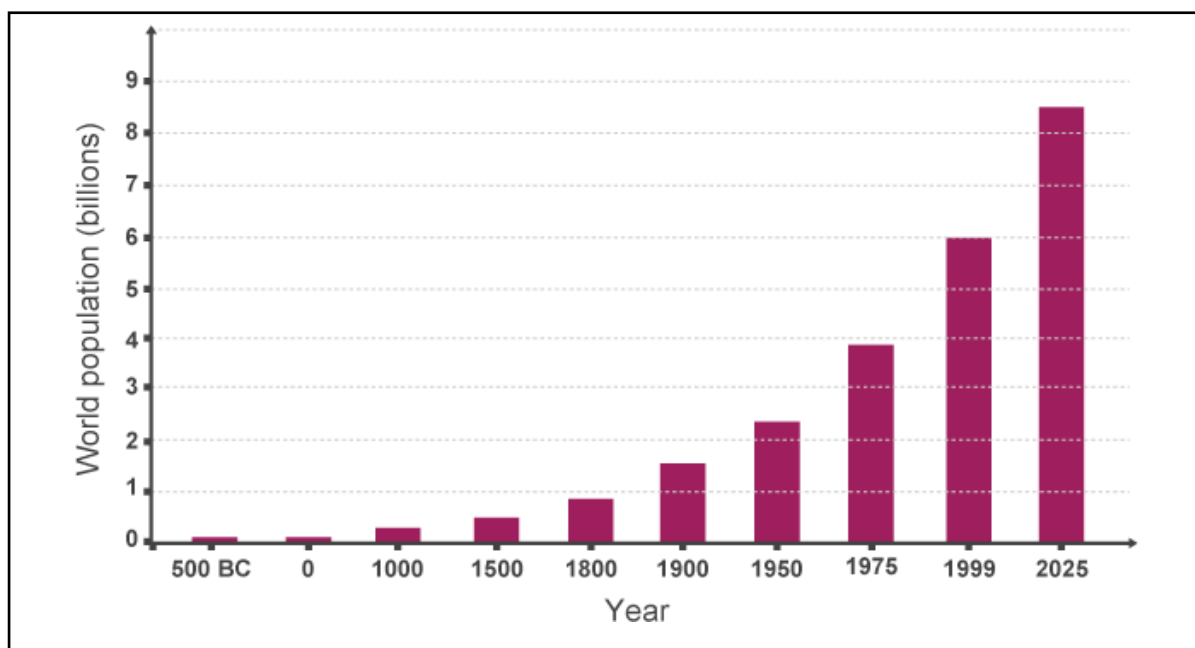
[illegible]

SL 4

PART I: The Global Patterns of Urbanisation

Use the Resource 6 below and your knowledge to answer Questions 21 – 23.

RESOURCE 6: The graph shows this pattern of accelerating growth (including the predicted population for 2025)



Source: <https://www.bbc.co.uk/bitesize/guides/zyxm82p/revision/1>

21. Define the term **Population Density.**

SL 1

22. Explain the reasons for increase in urban growth and the effects it has on the families, communities and the country as a whole.

SL 3

[illegible]

23. Explain the reasons behind urban residential segregation of cultural groups in urban areas.

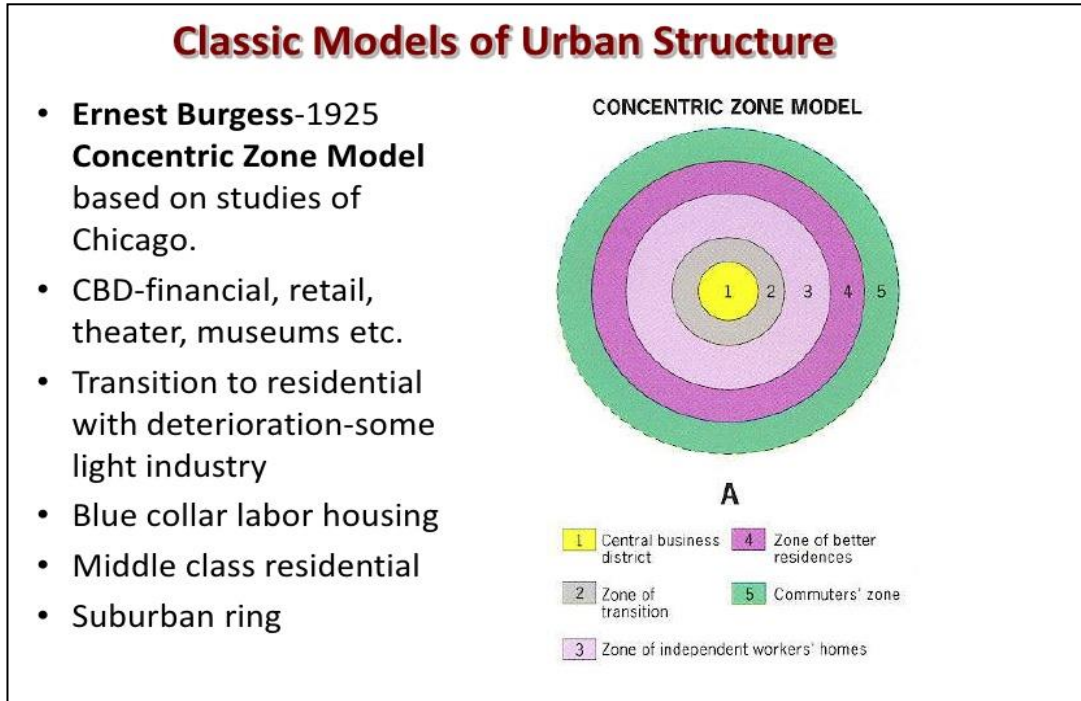
[illegible]

SL 3

PART II: Model of Urban Growth

Use the Resource 7 below and your knowledge to answer Questions 24 – 26.

RESOURCE 7:



Source: <https://image.slidesharecdn.com/models2-120507214910-phpapp02/95/models-2-16-728.jpg?cb=1336427793>

24. Define the term Informal Settlement.

SL 1

25. Define the term Urban Sprawl.

SL 1

PART III: Urban Planning and Management

Use the Resource 8 below and your knowledge to answer Questions 27 – 30.

RESOURCE 8



Partizánske in Slovakia

Source: https://en.wikipedia.org/wiki/Urban_planning#/media/File:Partizanske4.jpg

27. Define the term **Urban Management**.

SL 1

28. State ONE feature of urban management.

SL 1

29. Describe the features of inner city ghettos.

SL 2

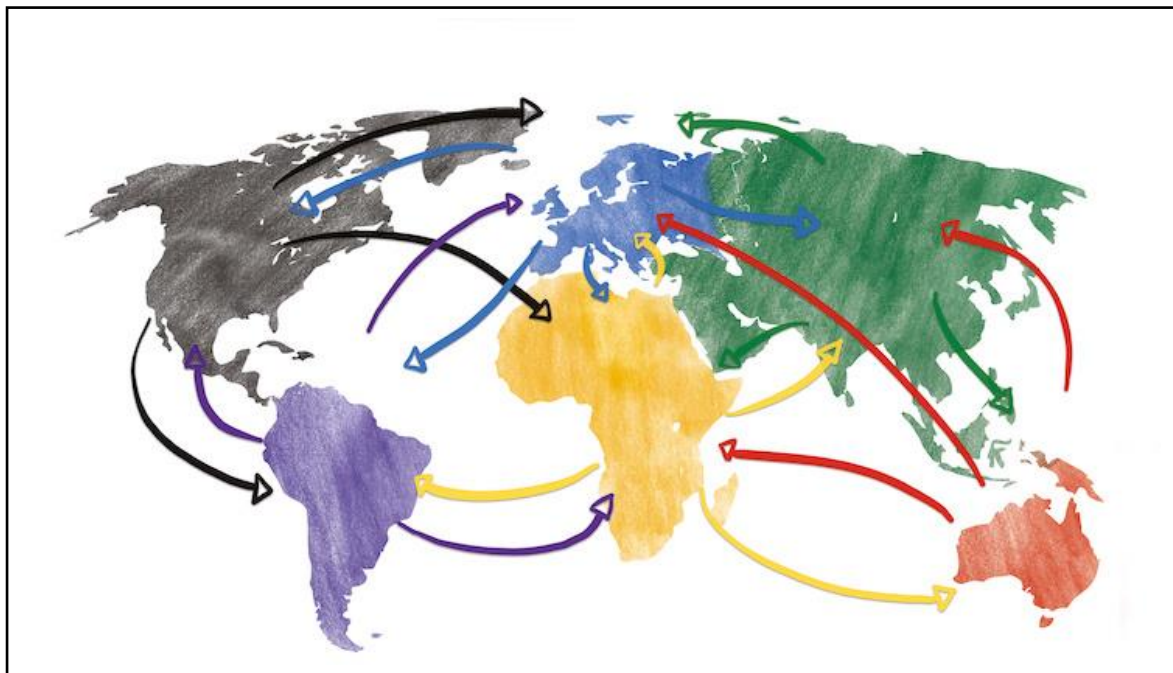
30. Discuss the positive impacts of urbanization, using specific examples to support your answer.

SL 4

[illegible]

PART I: Globalisation and development

Use the Resource 9 below and your knowledge to answer Questions 31 – 33.

RESOURCE 9

Source:- <https://voxeu.org/content/globalisation-doomed>

31. Define the term Sustainable Development Goals.

SL 1

32. List TWO cultural reasons why Samoa should embrace the United Nations agenda on Sustainable Development.

SL 2

33. Explain how the negative impacts of tourism influences the lives of people in the community.

SL 3

34. State ONE economic reason why countries like Samoa need to interact with other countries.

SL 1

PART II: Tourism Development

Use the Resource 10 below and your knowledge to answer Questions 35 – 37.

RESOURCE 10



Source:- <https://tourrom.com/australia/samoa/tourist-attractions-in-samoa/>

35. Name the government body that is responsible for tourism development in samoa.

SL 1

36. Define the term **Sustainable Tourism**.

SL 1

37. Explain how the benefits of tourism influence the lives of people in the community.

[illegible]

SL 3

PART III: Tourism Development

Use the Resource 11 below and your knowledge to answer Questions 38 – 40.

RESOURCE 11



Source:- http://www.un.org/ga/search/view_doc.asp?symbol=A/C.2/70/L.5/Rev.1

38. Name ONE ecotourism project in Samoa.

SL 1

39. Explain the benefits of ecotourism for the country and her people.

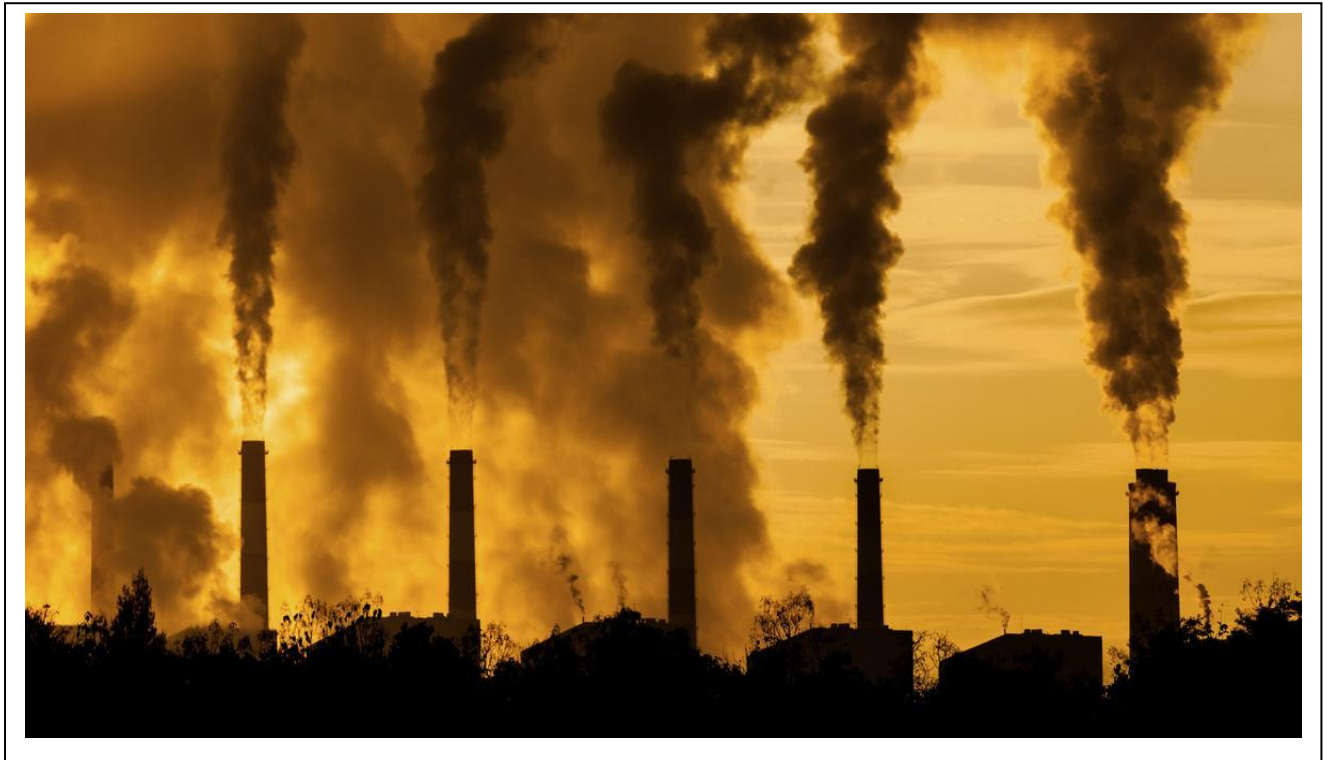
SL3

[illegible]

PART I: Climate Change

Use the Resource 12 below and your knowledge to answer Questions 41 – 45.

RESOURCE 12



Source: <https://www.tes.com/lessons/OSVQSxZRaWAsAw/environmental-issues>

41. Identify the environmental issue indicated in the resource above.

SL 1

42. Define the term Global Warming.

SL 1

43. Identify an environmentally friendly method of reducing the negative effects of climate change.

SL 1

44. Explain the social effects of climate change.

[illegible]

SL 3

[illegible]

- 45.** Discuss the effects of climate change on world food production, using specific examples to support your answer.

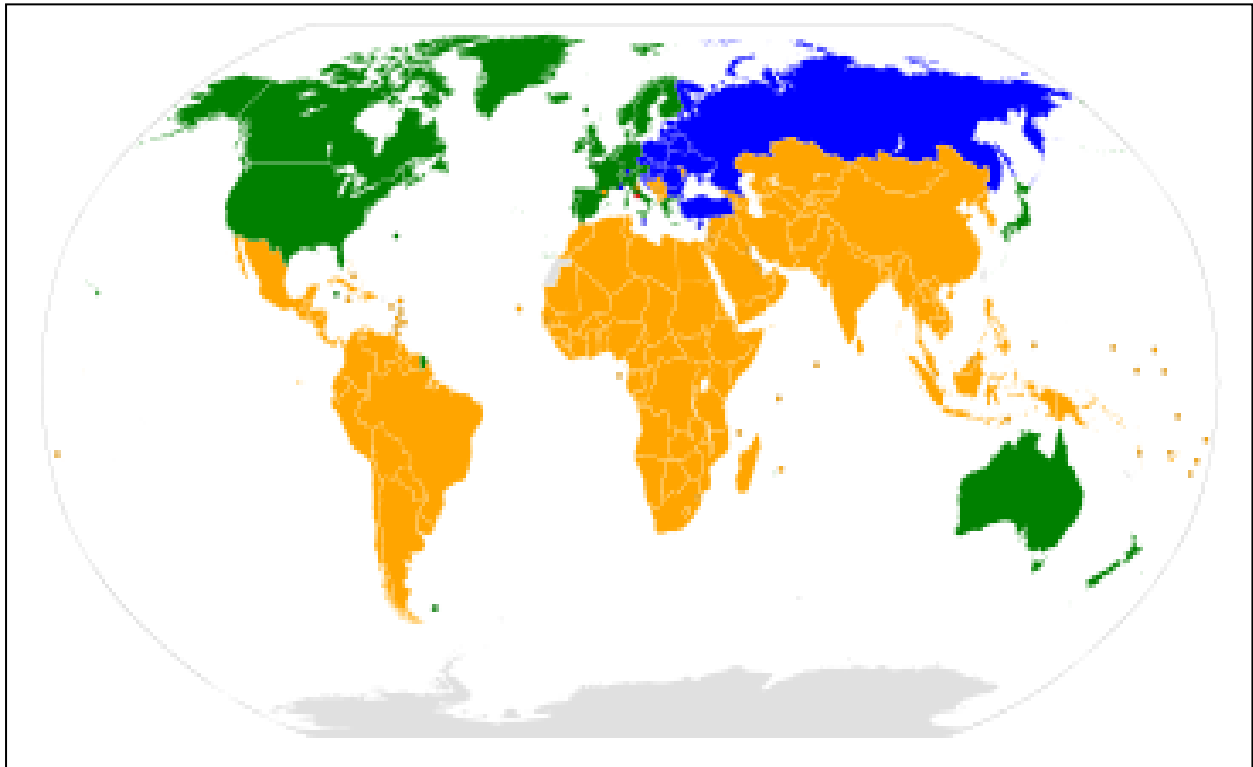
SL 4

[illegible]

PART II: Climate Change – Protocols, Strategies and Attitudes

Use the Resource 13 below and your knowledge to answer Questions 46 – 50.

RESOURCE 13



Parties to the UNFCCC | Annex I and II parties | Annex I parties | Non-annex parties | Observer states

Source: https://en.wikipedia.org/wiki/United_Nations_Framework_Convention_on_Climate_Change#/media/File:UNFCCC_parties.svg

46. Name an agreement/treaty signed by countries as part of the global action for managing climate change.

SL 1

47. Define the term **Carbon Tax**.

SL 1

48. Describe the attitude of developed countries to climate change issues.

SL 2

49. Explain why some developed countries do not fully commit themselves to observing mitigation protocols or agreements.

SL 3

50. Explain the economic effects of climate change on Pacific economies and their financial well-being.

SL 3

[illegible]

STUDENT EDUCATION NUMBER									

GEOGRAPHY

2020

(For Scorers only)

STRANDS	Weighting	Scores	Check Scorer	Double Entry (AED)
STRAND 1: PHYSICAL ENVIRONMENT	20			
STRAND 2: RESOURCES AND THEIR USES	20			
STRAND 3: POPULATION SETTLEMENT	20			
STRAND 4: DEVELOPMENT STUDIES- GLOBALISATION AND TOURISM	20			
STRAND 5: ENVIRONMENTAL ISSUES- CLIMATE CHANGE	20			
TOTAL	100			