



Samoa Secondary Leaving Certificate

MUSIC

2018

QUESTION and ANSWER BOOKLET

Time allowed: 3 Hours & 10 minutes

INSTRUCTIONS

1. You have 10 minutes to read **before** you start the exam.
2. Write your **Student Education Number (SEN)** in the space provided on the top right hand corner of this page.
3. **Answer ALL QUESTIONS.** Write your answers in the spaces provided in this booklet.
4. If you need more space, ask the Supervisor for extra paper. Write your SEN on all extra sheets used and clearly number the questions. Attach the extra sheets at the appropriate places in this booklet.

| CURRICULUM STRANDS | | Page | Time (min) | Weighting |
|--------------------|-------------------|------|------------|------------|
| STRAND 1: | MUSICAL LANGUAGE | 2 | 58 | 28 |
| STRAND 2: | MUSIC COMPOSITION | 5 | 50 | 40 |
| STRAND 3: | MUSIC ANALYSIS | 9 | 47 | 20 |
| STRAND 4: | RESEARCH (ESSAY) | | 25 | 12 |
| TOTAL | | | 180 | 100 |

Check that this booklet contains pages 2-15 in the correct order and that none of these pages is blank.

YOU MUST HAND THIS BOOKLET TO THE SUPERVISOR AT THE END OF THE EXAMINATION

Music dynamics are known in a variety of musical terms.

Answer the following:

1. Gradually increase volume is what Italian musical term _____

SL 1

2. *pp* is also known as _____

SL 1

What is the Enharmonic equivalent of the following notes?

3. *E_b* _____

SL 1

4. *F* _____

SL 1

5. *G* _____

SL 1

6. *A[#]* _____

SL 1

Write the meaning of the following terms.

7. *Dal segno* _____

SL 1

8. *Poco* _____

SL 1

9. *Scherzando* _____

SL 1

10. *Senza* _____

SL 1

11. *Legato* _____

SL 1

12. *Piu mosso* _____

SL 1

13. Define the musical term "*interval*."

SL 3

In reference to the MAJOR SCALE, write the **Qualities** of the Intervals
(eg. Major 2nd)

14. _____ 3rd

SL 1

15. _____ 4th

SL 1

16. _____ 6th

SL 1

Answer the following questions.

17. The **Leading Note** is on which degree _____

SL 1

18. The 2nd degree of the scale is also called _____

SL 1



(c) Add bar lines and the appropriate time signature.

SL 3



4. Name or draw the following:

(a) # _____

SL 1

(b) ! _____


SL 1

(c) % _____

SL 1

(d) Natural Sign _____

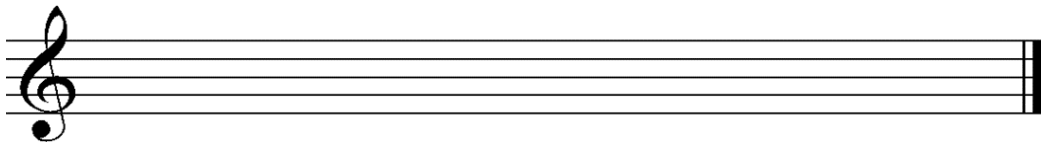
SL 1

(e)  _____

SL 1

5. Construct an ascending major scale in minims with four sharps. Add flats appropriately. Mark the intervals.

| |
|------|
| SL 3 |
| |



6. Name the following intervals e.g. Major 2nd



| |
|------|
| SL 3 |
| |



| |
|------|
| SL 3 |
| |

7. Name the following keys.



| |
|------|
| SL 2 |
| |



| |
|------|
| SL 2 |
| |



| |
|------|
| SL 2 |
| |

8. Transpose the given music a semitone lower. Mark (**) an Imperfect Cadence.


| |
|------|
| SL 4 |
| |

Fonoti PJ Sili Ieriko

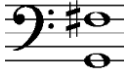
9. Name ONE possible key signature for the following intervals:

(a)  _____

| |
|------|
| SL 3 |
| |


(b)  _____

| |
|------|
| SL 3 |
| |


(c)  _____

| |
|------|
| SL 3 |
| |

10. Name these notes:

(a)  _____

| |
|------|
| SL 1 |
| |

(b)  _____

| |
|------|
| SL 1 |
| |

(c)  _____

| |
|------|
| SL 1 |
| |

11. What kind of Time is  ?

_____ Simple Triple Time _____

| |
|------|
| SL 1 |
| |

12. Write an example of a compound Triple time.

_____ 9/8 _____

| |
|------|
| SL 1 |
| |

13. Study the following melody to answer (a) to (c).

Violin

Maestoso

p *f* *pp* *mf*

rit.

Vln.

a tempo

f *ff* *pp* *mp*

rall.

3

(a) How many beats in a bar?

| |
|------|
| SL 1 |
| |

(b) Which notes should sound the softest? Circle the notes on the score.

| |
|------|
| SL 1 |
| |

(c) What is a *fermata*? e.g. in bar 3.

| |
|------|
| SL 1 |
| |

14. Define a *maestoso*.

| |
|------|
| SL 2 |
| |

- Bassoon
-
- ♩=200
- f* *mf* *f*

| |
|------|
| SL 4 |
|------|

16. Define the following terms:

(a) *Tempo*

| |
|------|
| SL 1 |
| |

(b) *Balance*

| |
|------|
| SL 1 |
| |

(c) *Timbre*

| |
|------|
| SL 1 |
| |

(d) *Pitch*

| |
|------|
| SL 1 |
| |

(e) *Intonation*

| |
|------|
| SL 1 |
| |

Refer to the following melody below to answer (a) to (g).

Allegro con moto ♩.=120

2 3

Tuba

f *p* *f* *p* *f* *p* *f*

4 5 6 FINE

Tba.

p *f* *mf*

17. Give the meaning of the following:

- (a) *Allegro con moto*

| | |
|--|------|
| | SL 1 |
|--|------|

- (b) $\text{J.}=120$

| | |
|--|------|
| | SL 1 |
| | |

- (c)

| | |
|--|------|
| | SL 1 |
| | |

- (d)

| | |
|--|------|
| | SL 1 |
| | |

- (e) How are the notes in bar 2 to be played?

| | |
|--|------|
| | SL 1 |
|--|------|

(f) Define the term FINE.

SL 2

(g) Does the melody use all the notes in the D major scale?

SL 2

18. Arrange the following dynamics from the softest to the loudest.

f *p* *mp* *ff* *pp* *mf*

SL 3

19. Arrange the given terms from fastest to slowest.

Lento Andante allegro Andantino Allegretto

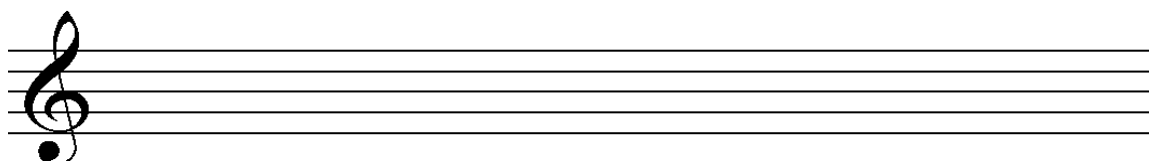
SL 3

Study the melody to answer (a) to (e).



20. (a) Rewrite the first 2 bars of the above melody in $\frac{6}{8}$ Compound Time.

SL 4



(b) From bar 1 to 10, how many times would a player breathe?

| |
|------|
| SL 1 |
| |

(c) Which beat of the bar is the strongest?

| |
|------|
| SL 1 |
| |

(d) Write the bar numbers below where a Chromatic scale is used.

| |
|------|
| SL 3 |
| |

(e) Explain the playing of the notes which are affected by a tie in bars 1 and 2.

| |
|------|
| SL 3 |
| |

21. With reference to dynamics and tempo, explain how a soprano would sing the following music. Refer to the lyrics to explain your answer.

Mass in F Minor

Anton Bruchner

musical score snippet with lyrics: *mi - se - re - re, mi - se - re - re no - bis.* Dynamics: *ff.*, *poco a poco dim.*, *- de p*

| |
|------|
| SL 4 |
| |

| |
|------|
| SL 4 |
| |

- All through the night*



15|SSLC

| STUDENT EDUCATION NUMBER | | | | | | | | | |
|--------------------------|--|--|--|--|--|--|--|--|--|
| | | | | | | | | | |

MUSIC

2017

(For Scorers only)

| CURRICULUM STRANDS | Weighting | Scores | Chief Scorer |
|-----------------------------|-----------|--------|--------------|
| STRAND 1: GENERAL KNOWLEDGE | 32 | | |
| STRAND 2: COMPOSITION | 28 | | |
| STRAND 3: PERFORMANCE | 40 | | |
| TOTAL | 100 | | |