

STUDENT EDUCATION NUMBER

GOVERNMENT OF SAMOA
MINISTRY OF EDUCATION, SPORTS AND CULTURE

Samoa Secondary Leaving Certificate

MUSIC

2019

QUESTION and ANSWER BOOKLET

Time allowed: 3 Hours & 10 minutes

INSTRUCTIONS

1. You have 10 minutes to read **before** you start the exam.
2. Write your **Student Education Number (SEN)** in the space provided on the top right hand corner of this page.
3. **Answer ALL QUESTIONS.** Write your answers in the spaces provided in this booklet.
4. If you need more space, ask the Supervisor for extra paper. Write your SEN on all extra sheets used and clearly number the questions. Attach the extra sheets at the appropriate places in this booklet.

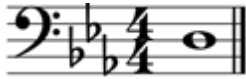
CURRICULUM STRANDS		Page	Time (min)	Weighting
STRAND 1:	GENERAL KNOWLEDGE	2	50	28
STRAND 2:	COMPOSITION	5	60	32
STRAND 3:	PERFORMANCE	9	70	40
TOTAL			180	100

Check that this booklet contains pages 2-14 in the correct order and that none of these pages is blank.

YOU MUST HAND THIS BOOKLET TO THE SUPERVISOR AT THE END OF THE EXAMINATION

Name the letter names of the following notes:

1.



SL 1

2.



SL 1

Name the enharmonic equivalent of the following notes:

3. E \times

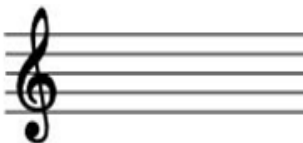
SL 1

4. C \flat

SL 1

Write the following key signatures:

5.



A Major

SL 1

6.



Db

SL 1

7. How many dotted crotchet beats in a bar of $\frac{6}{8}$ Time Signature? _____

SL 1

8. What do you call a note on a beat which appears before the first complete bar?

SL 1

9. Write the *p*, *mf*, *f*, *ff*, *mp* in the correct order from the softest to the loudest.

SL 1

10. Name the following Ornament.



SL 2

Write a note above the given note to form the following harmonic intervals.

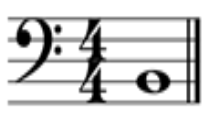
11.



Aug 5th

SL 2


12.



Dim7th

SL 2

Write the following tonic triads with their key signature.

13. 

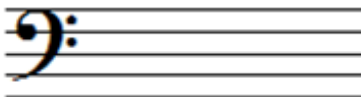
E major

SL 3

14. 

A major

SL 3

15. 

D major

SL 3

Refer to the music below and answer the following question.

16. Write ONE octave of the scale 'Unto us a Boy is born' is built on and mark the semitones. Circle the second TETRACHORD and name the scale which begins with it (*second tetrachord*).

Unto us a Boy is born



SL 4

17. To raise a note by a semitone, which accidental would you use?

SL 1

18. What is a natural sign used for?

SL 1

19. To lower a note by a tone, which accidental do you use?

SL 1

Define the following terms:

20. Slur

SL 1

21. Melody

SL 2

22. Harmony

SL 2

23. Modulation

SL 2

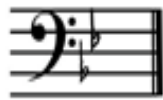
What minor keys are represented by the following key signatures?

24.



SL 1

25.



SL 1

26.



SL 1

27.



SL 1

28. What is the value of the dot in a dotted note? Demonstrate with an example.

SL 3

29. Name a note which you will find in the subdominant triad of B \flat major.

SL 1

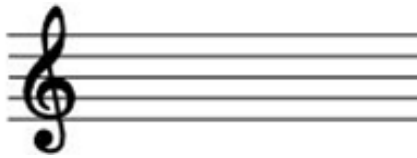
30. _____ indicates Simple Triple time signature.

SL 1

31. Which degree of a scale is the **Submediant** note?

SL 1

32. Draw the Submediant triad of the B \flat .

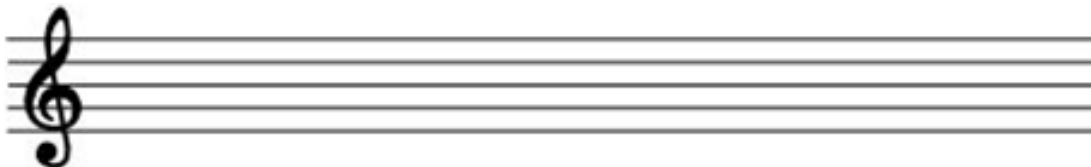


SL 2

33. Refer to Number 32 and analyze or explain the intervals in the chord.

SL 3

34. Refer to Number 32 and write the 2nd inversion of that chord.



SL 3

35. Complete THREE (3) more phrases of the given example in a Tonal Sequence harmonic progression lasting for six (6) bars.

Follow the instructions below:

- Repeat phrase 1 into phrase 2 a **Semitone** lower.
- Repeat phrase 2 into phrase 3 a **Tone** lower.
- Repeat phrase 3 into phrase 4 a **Tone** lower.

SL 4

Phrase 1



Phrase 2.

Phrase 3.

Phrase 4.



Define the following terms:

36. *Largo*

SL 1

37. *Accelerando*

SL 1

38. *Dolce*

SL 1

39. *Andante*

SL 1

40. *Tone*

SL 1

41. *Articulation*

SL 1

42. *Tutti*

SL 3

Refer to the following music and answer Numbers 43 – 47.



43. What key is it written in?

SL 1

44. Number the bars on the score.

SL 1

45. Which bars are repeated?

SL 2

46. Mark the phrases of the music on the score.

SL 3

47. Add dynamic markings on the score to help you express the music.
Describe or discuss your interpretation.

SL 4

AMENI AMENI AMENI

Bishop Fine Halapua

Ueta Solomona

A B C D

Soprano


Alto

Tenor

Bass

48. Number the bars on the score above.

SL 1

49. The  appears in the piece - what does it stand for and what is its use?

SL 2

50. Explain the melodic shape.

SL 3

51. Circle the climax of the piece and support with an explanation.

SL 3

52. The piece is to be performed soft at bars 1 and 2, bar 3 begins moderately loud and gradually gets louder to loud at bar 5 then gets softer to end the last chord at very soft. Insert the dynamic markings on the music score.

SL 3

53. Analyze and name the chords at A, B, C and D.

A _____

B _____

C _____

D _____

SL 4

54. The following is a well-known melody of a Samoan song composed by Mata'utia Pene Solomona. Transpose this melody a TONE Higher.

SL 4

O LE ROSA

Words and Music by Mata'utia Pene Solomona

Hamony Re-arranged by Ueta Solomona
U.S.P. 3-10-1995



Five empty musical staves with treble clefs, provided for transposing the melody a tone higher.

STUDENT EDUCATION NUMBER									

MUSIC

2019

(For Scorers only)

CURRICULUM STRANDS	Weighting	Scores	Chief Scorer
STRAND 1: GENERAL KNOWLEDGE	28		
STRAND 2: COMPOSITION	32		
STRAND 3: PERFORMANCE	40		
TOTAL	100		