



# Samoa Secondary Leaving Certificate

# VISUAL ARTS

## 2020

## QUESTION and ANSWER BOOKLET

Time allowed: 3 Hours & 10 minutes

### INSTRUCTIONS

1. You have 10 minutes to read **before** you start the exam.
2. Write your **Student Education Number (SEN)** in the space provided on the top right hand corner of this page.
3. **Answer ALL QUESTIONS.** Write your answers in the spaces provided in this booklet.
4. If you need more space, ask the Supervisor for extra paper. Write your SEN on all extra sheets used and clearly number the questions. Attach the extra sheets at the appropriate places in this booklet.
5. Students are to use **lead** and/or **coloured pencils** for numbers requiring drawings.

CURRICULUM STRANDS		Page	Time (min)	Weighting
<b>STRAND 1:</b>	LEARNING ABOUT OUR ENVIRONMENT-PEOPLE	2	26	15
<b>STRAND 2:</b>	ELEMENTS AND PRINCIPLES OF ART SPACE AND MOVEMENT	5	54	29
<b>STRAND 3:</b>	PATTERNS OF OCEANIA-ABORIGINAL ART	12	25	14
<b>STRAND 4:</b>	THE PRINCIPLES OF GRAPHICS DESIGN AND ILLUSTRATION-ILLUSTRATION OF LEGENDS	15	25	14
<b>STRAND 5:</b>	THE LANGUAGE OF MULTI-MEDIA ART MODELING AND CARVING	19	50	28
<b>TOTAL</b>			<b>180</b>	<b>100</b>

Check that this booklet contains pages 2-26 in the correct order and that none of these pages are blank.

**HAND THIS BOOKLET TO THE SUPERVISOR AT THE END OF THE EXAMINATION.**

Fill in the missing word for Questions 1 – 3.

1. An artwork of another person is called a \_\_\_\_\_.
2. A \_\_\_\_\_ is an artwork in which the artist represents himself or herself.
3. **Name** the Renaissance artist who painted the most famous portrait of all time, the *Mona Lisa*. His name was \_\_\_\_\_.
4. **List** TWO major Pop Artists.  
\_\_\_\_\_
5. **Analyze** what art elements and principles Lichtenstein has used in creating this painting *Drowning Girl*.

SL 1

SL 1

SL 1

SL 2



Figure 1. Artist Roy Lichtenstein, painting – *Drowning Girl*

SL 3

---

---

---

---

---

6. **Discuss** the portrait below by Nikki Mariner, *Sit however you want*. What is the artist saying about the woman in the painting. How do you feel about this painting and how does it relate to Samoan culture?



Figure 2. Artist Nikki Mariner painting, *Sit however you want*. Picture Manamea Art Studio

---

---

---

---

---

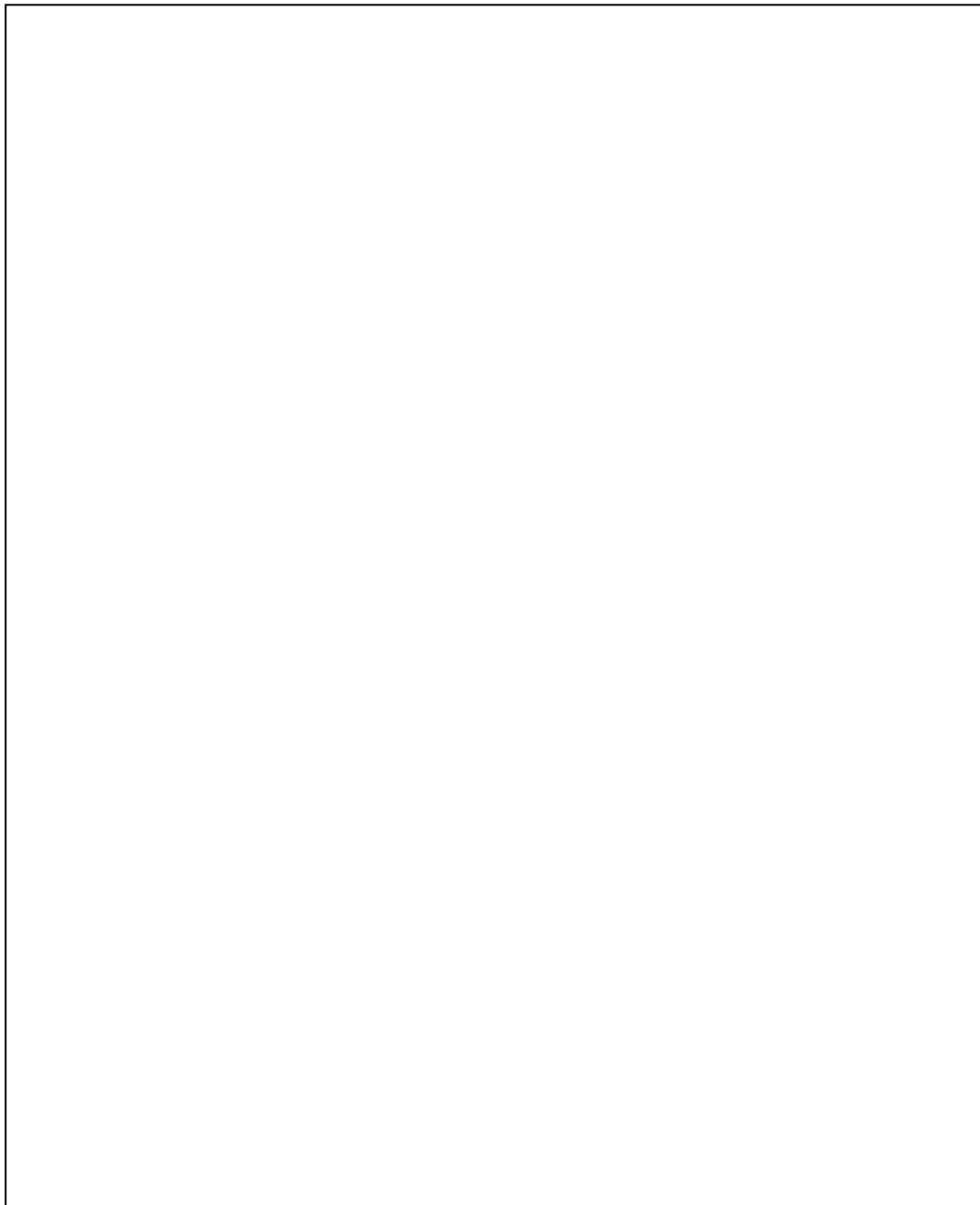
SL 3

---

---

---

7. **Draw** a detailed self-portrait and include **only** your head and shoulders. What clothing are you wearing and what does your hairstyle say about you? Does the picture tell us about you and your culture? Use lead or coloured pencils.



SL 4

**Fill in the missing words for Questions 8 to 12. Choose from the words below:**

*space, illusion, movement, perspective, positive, within, empty, action*

- 8.** Space is the element of art that refers to the area around, between, below, above and \_\_\_\_\_ objects.

SL 1

- 9.** In both two and three dimensional art, the shapes and objects are called the \_\_\_\_\_ space.

SL 1

- 10.** Negative \_\_\_\_\_ is the \_\_\_\_\_ space surrounding shapes.

SL 2

- 11.** \_\_\_\_\_ is a graphic system that creates the \_\_\_\_\_ of depth and volume on a two-dimensional surface.

SL 2

- 12.** \_\_\_\_\_ is the principle of art used to create the look and feeling of \_\_\_\_\_ and to guide the viewer's eye throughout the work of art.

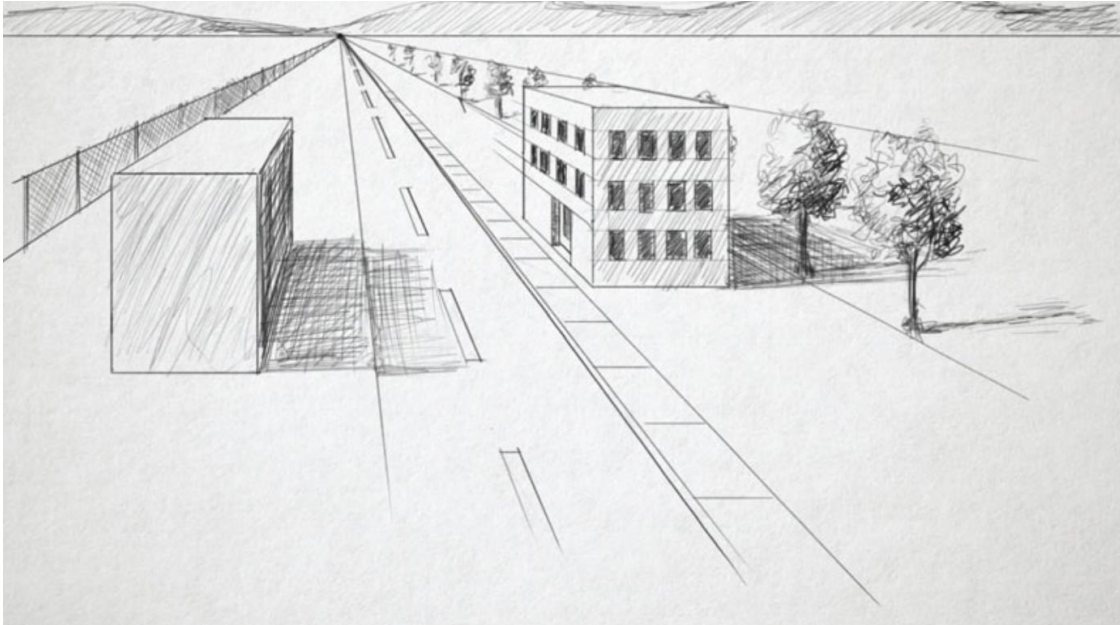
SL 2

- 13. Identify** how movement can create mood and energy in an artwork.

SL 2

14. Linear perspective is a way of using lines to show distance and depth in an artwork.

**Label** the diagram below to show the **vanishing point** and the **horizon line**.



SL 2

**Figure 3.** Diagram of perspective



15. **Discuss** how Giorgio de Chirico used perspective in his painting *Mystery and Melancholy of a Street*, 1914.



Figure 4. Artist Giorgio de Chirico, *Mystery and Melancholy of a Street*, 1914

---

---

---

---

---

---

---

SL 3

16. **Describe** how M C Escher used negative and positive geometric shapes in his print *Day and Night* 1938, to create a visual puzzle and trick our eyes.

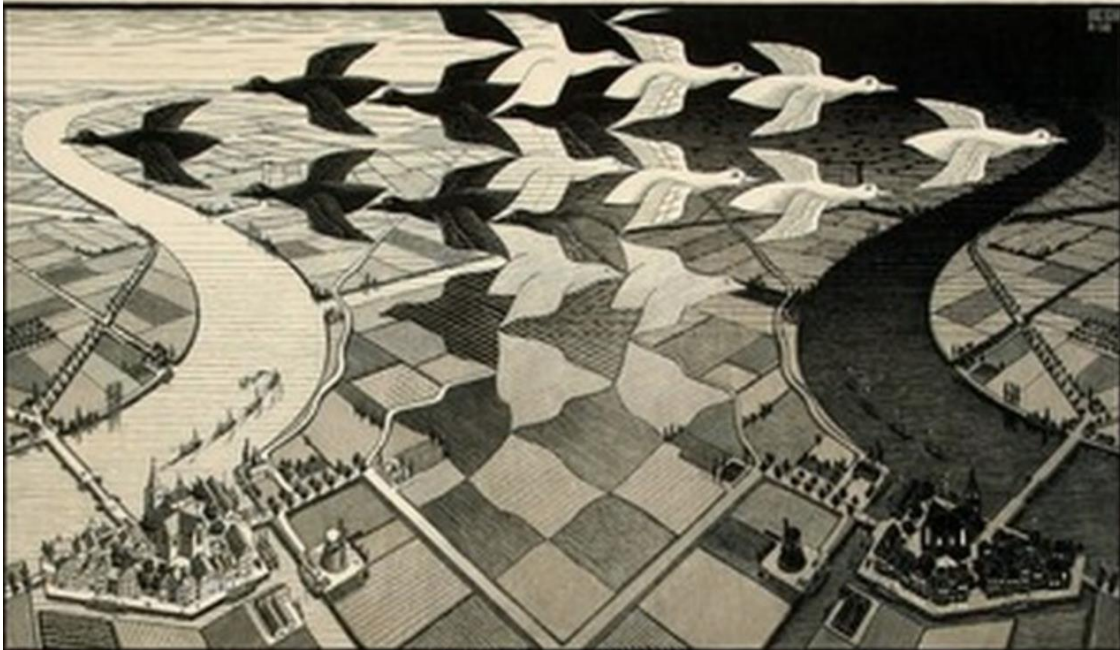


Figure 5. MC Escher *Day and Night* – Lithograph Print 1938

---

---

---

---

---

---

---

---

---

SL 3



17. **Explain** how French artist Henri Matisse used space, form and perspective in his painting *Interior with a Goldfish and Cats*, 1914.

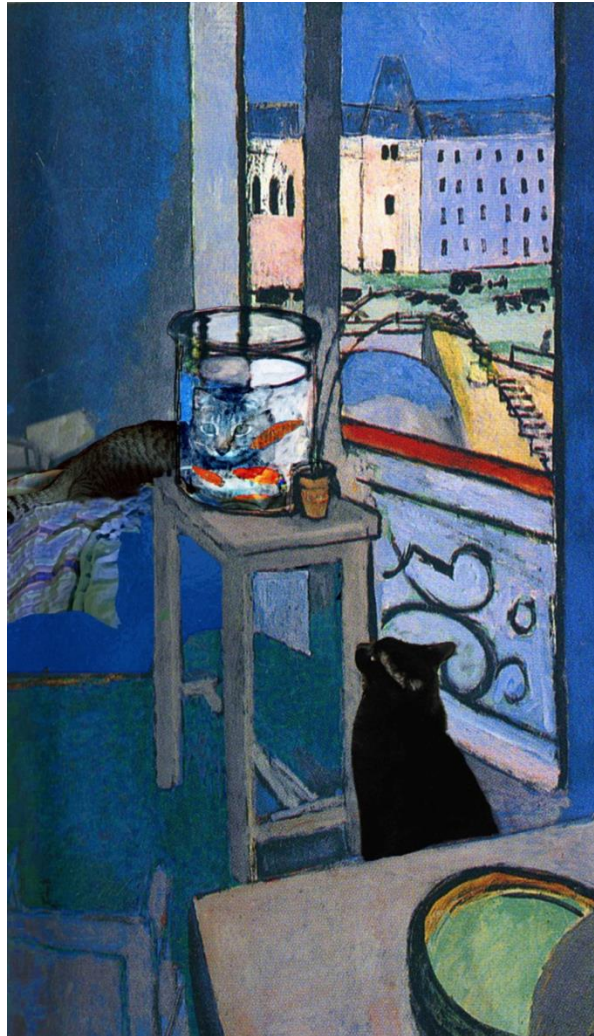


Figure 6. Artist Henri Matisse *Interior with Goldfish and Cats*, 1914.

---

---

---

---

---

---

---

---

---

SL 3

18. **Discuss** how artist Edvard Munch used colour, rhythm and movement in his painting *Dance on the Beach*, and tell us the mood of the painting and how it makes you feel.



Figure 7: Edvard Munch, *Dance on the beach*, 1900

---

---

---

---

---

---

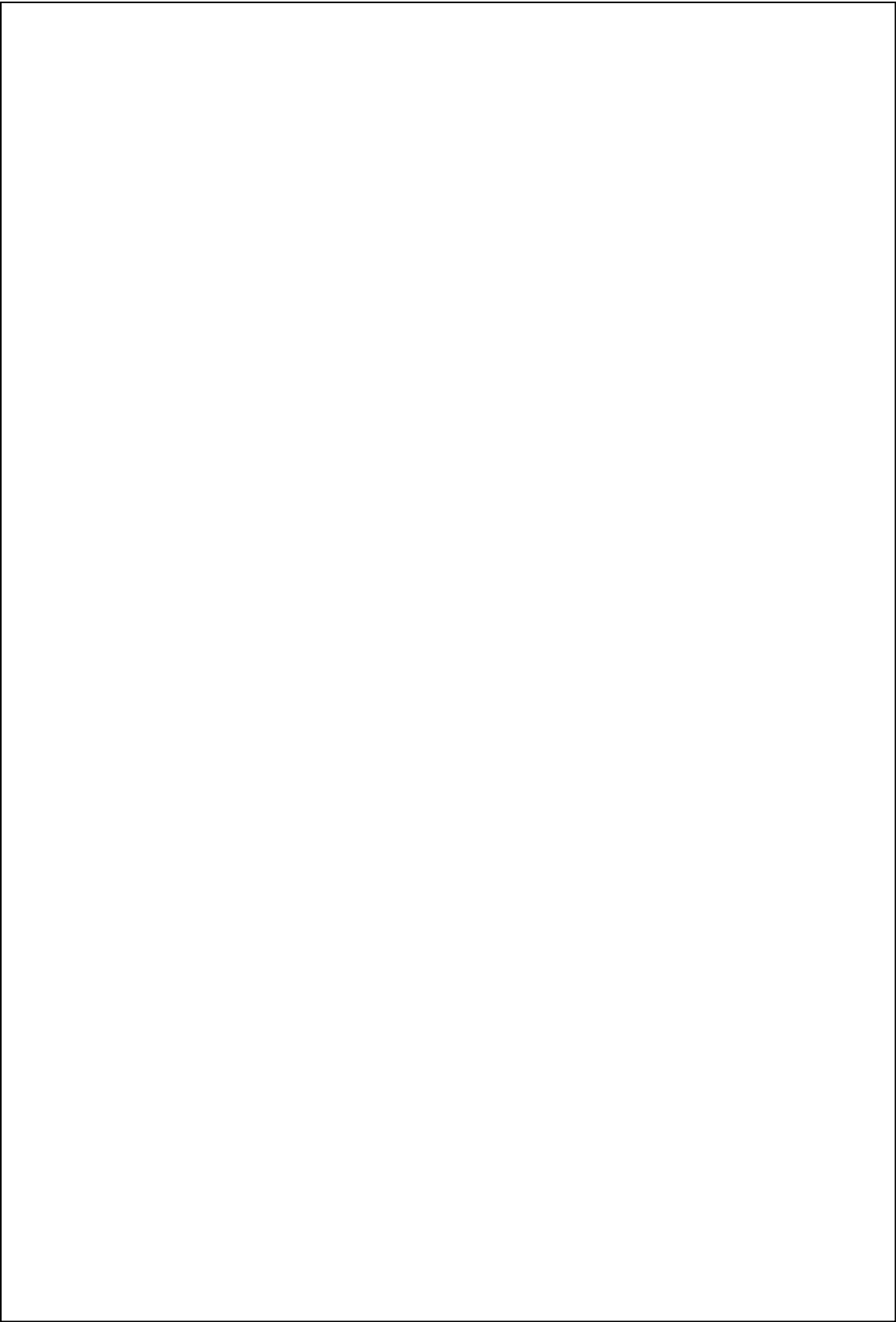
---

---

---

SL 4

19. **Create** a drawing of a vase and flowers to show movement and form. Use **lead** or **coloured** pencils.



SL 4

20. **Name** the country Aboriginal people come from.

\_\_\_\_\_

SL 1

21. **List TWO** ancient forms of Aboriginal art.

\_\_\_\_\_

\_\_\_\_\_

\_\_\_\_\_

SL 2

22. **Describe** why it is important that Aboriginal people make artworks about their histories and culture.

\_\_\_\_\_

\_\_\_\_\_

\_\_\_\_\_

\_\_\_\_\_

\_\_\_\_\_

SL 2

23. Aboriginal art shows traditional techniques and stories from the Dreaming. **Describe** what the *dreaming* is about?

\_\_\_\_\_

\_\_\_\_\_

\_\_\_\_\_

\_\_\_\_\_

\_\_\_\_\_

SL 2



*Mara Country* (1988) is one of Ginger Riley Manduwalawalas' most important paintings. The painting is sacred and the artist has included objects that talk about his mother's history, the land and the traditions of his ancestors. The people, animals and landscape have great spiritual importance for the dreaming stories of his clan.

24. **Discuss** the painting by *Mara Country* by looking at what you see in the picture and what animals the artist has included in his image. Discuss the use of colours and how the painting makes you feel.



Figure 8. Artist Ginger Riley Munduwalawala, *Mara Country* 1988

---

---

---

---

---

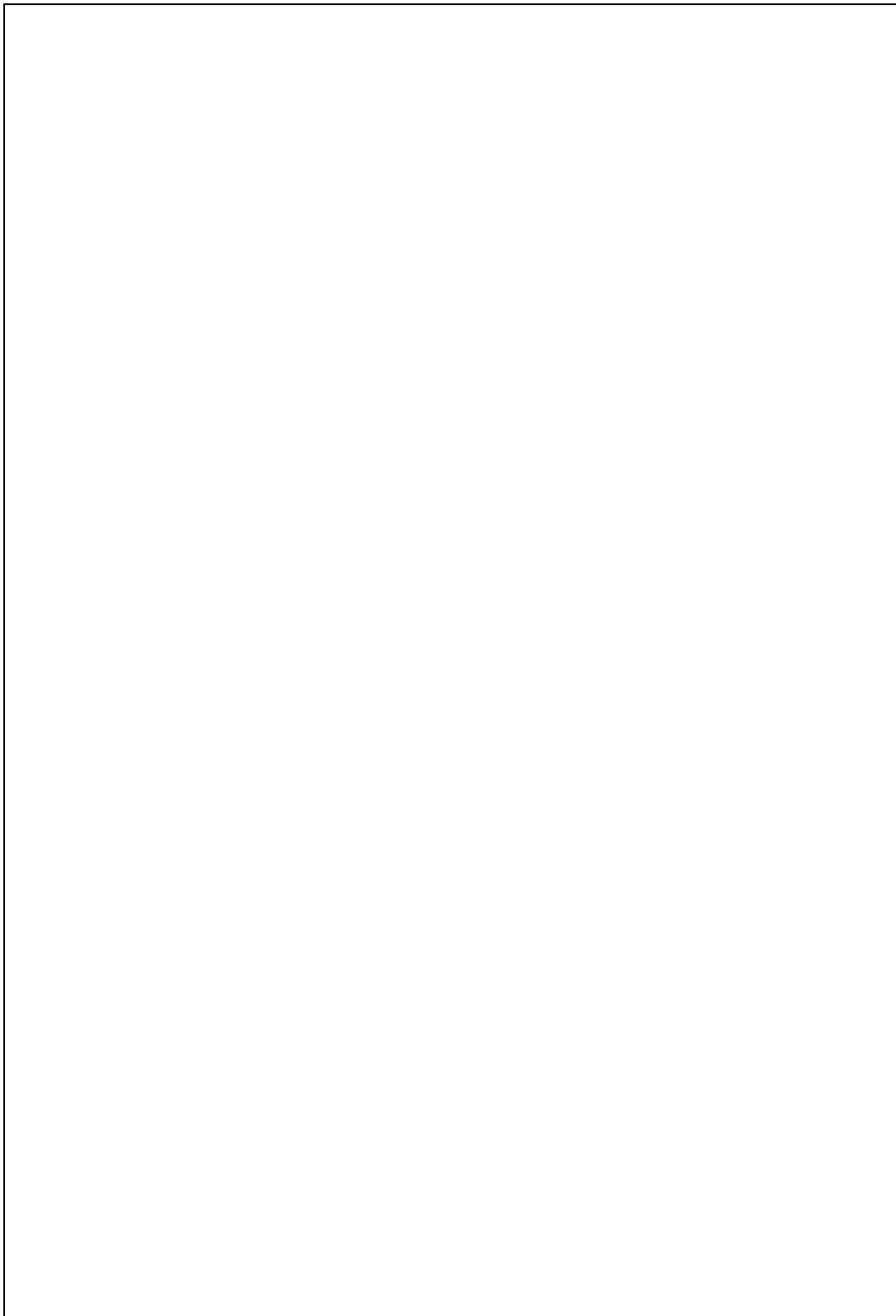
---

---

---

SL 3

25. **Draw** an Aboriginal style drawing based on your place of birth, where your family comes from and include plants, animals and landscapes that make up your family environment. Use **lead** or **coloured** pencils.



SL 4



**Fill in the missing space with a suitable word for Questions 26 and 27.**

**26.** Illustrators create visual images that give meaning to the \_\_\_\_\_ of a book.

<b>SL 1</b>

**27.** A person who puts the ideas of the writer into pictures and arranges them in  
an interesting way is called a \_\_\_\_\_ .

<b>SL 2</b>

**28. List TWO different media that can be used to make illustrations.**

<b>SL 2</b>


29. **Discuss** why Samoan children will like this illustration by Gus Hunter.



**Figure 9.** Book *O Se'evae Ipu o Simona*,  
Story by Margaret Ah Tune and Illustrations by Gus Hunter.

---

---

---

---

---

---

---

---

SL 3

30. **Gus Hunter** is a well-known Samoan illustrator who worked as a digital graphic artist on famous films such as *The Lord of the Rings*, *King Kong*, *Dracula Untold*, *Avatar*, and *The Chronicles of Narnia*.

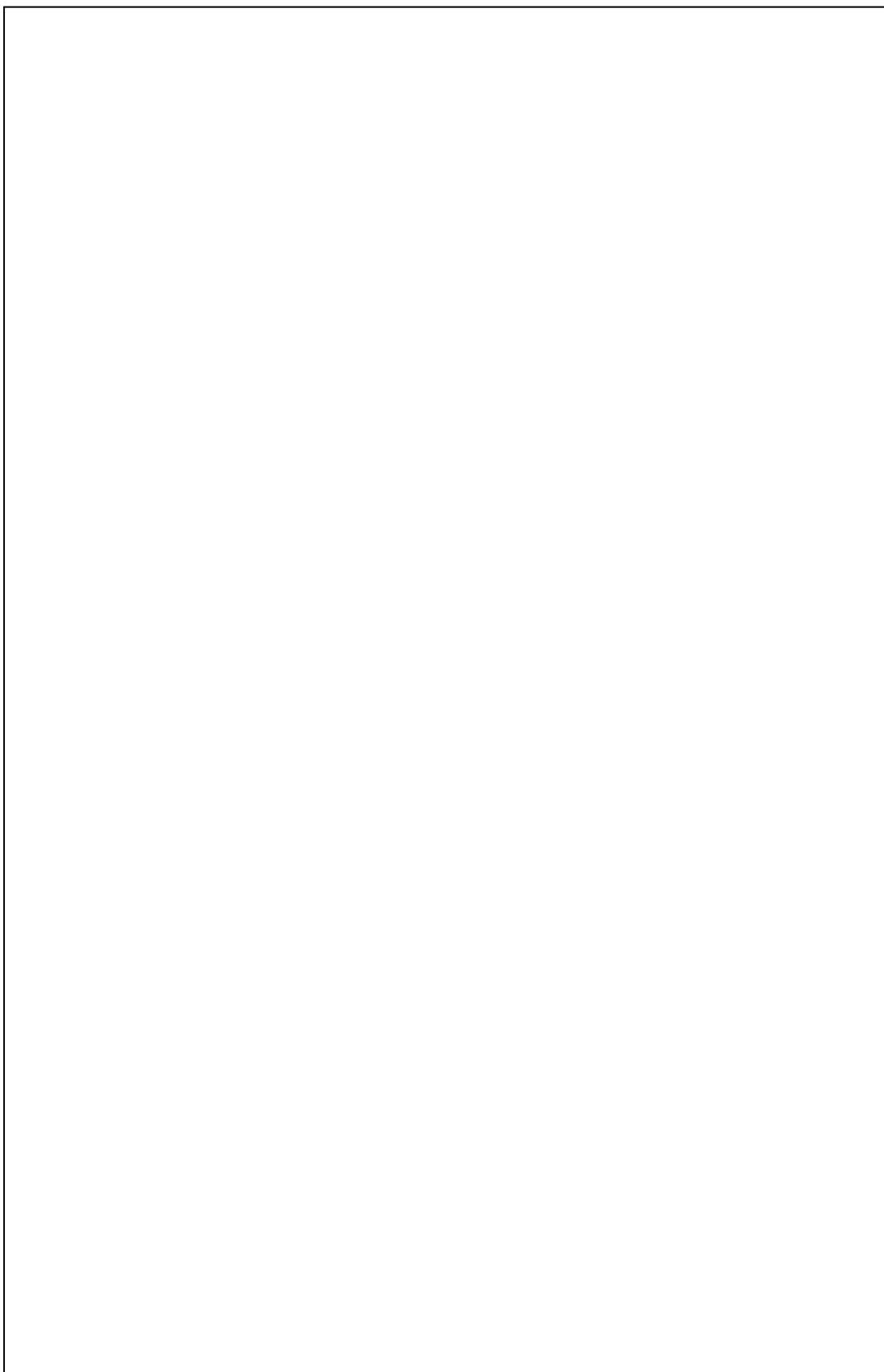
Explain why young people will like Gus Hunter's illustrations he creates for animated films, books and games.



Figures 10 & 11. Gus Hunter Illustrations for *The Hobbit*.

	SL 3

31. **Draw** an illustration for a Samoan legend (*fa'agogo*) using the comic book style of Gus Hunter. Use **lead** or **coloured pencils**.



SL 3

**Fill in the missing words for Questions 32 to 36.**

*tourist, kava, stone, canoes, wood, three, one*

**32. Sculpture** is a \_\_\_\_\_ dimensional work of art.

SL 1

**33.** The most common materials used for **carving** are wood and \_\_\_\_\_.

SL 1

**34.** A **relief** sculpture can be viewed from \_\_\_\_\_ side only.

SL 1

**35.** Traditional Samoan carving dates back hundreds of years. The Samoan va'a, or \_\_\_\_\_ were carved by master canoe builders. The Samoan canoe is carved using local \_\_\_\_\_.

SL 2

**36.** Samoan carvers also carve objects for ritual and ceremonies, and the name of one of these objects is a \_\_\_\_\_ bowl. Samoan weapons are also carved in Samoa and these are now mainly made for sale in the \_\_\_\_\_ markets.

SL 2

37. **List** other forms of decorative carving made in Samoa.

---

---

---

---

---

SL 2

38. **Describe** what is meant by the term modeling, and what soft materials can be used for modeling in Samoa.

---

---

---

---

---

---

---

SL 2



39. **Discuss** HOW the ancient Lapita designs relate to today's tattoo and siapo (*tapa*) patterns.



Figures 12 & 13. Lapita Pottery Pot, and Lapita Patterns source Sand 1996.

---

---

---

---

---

---

---

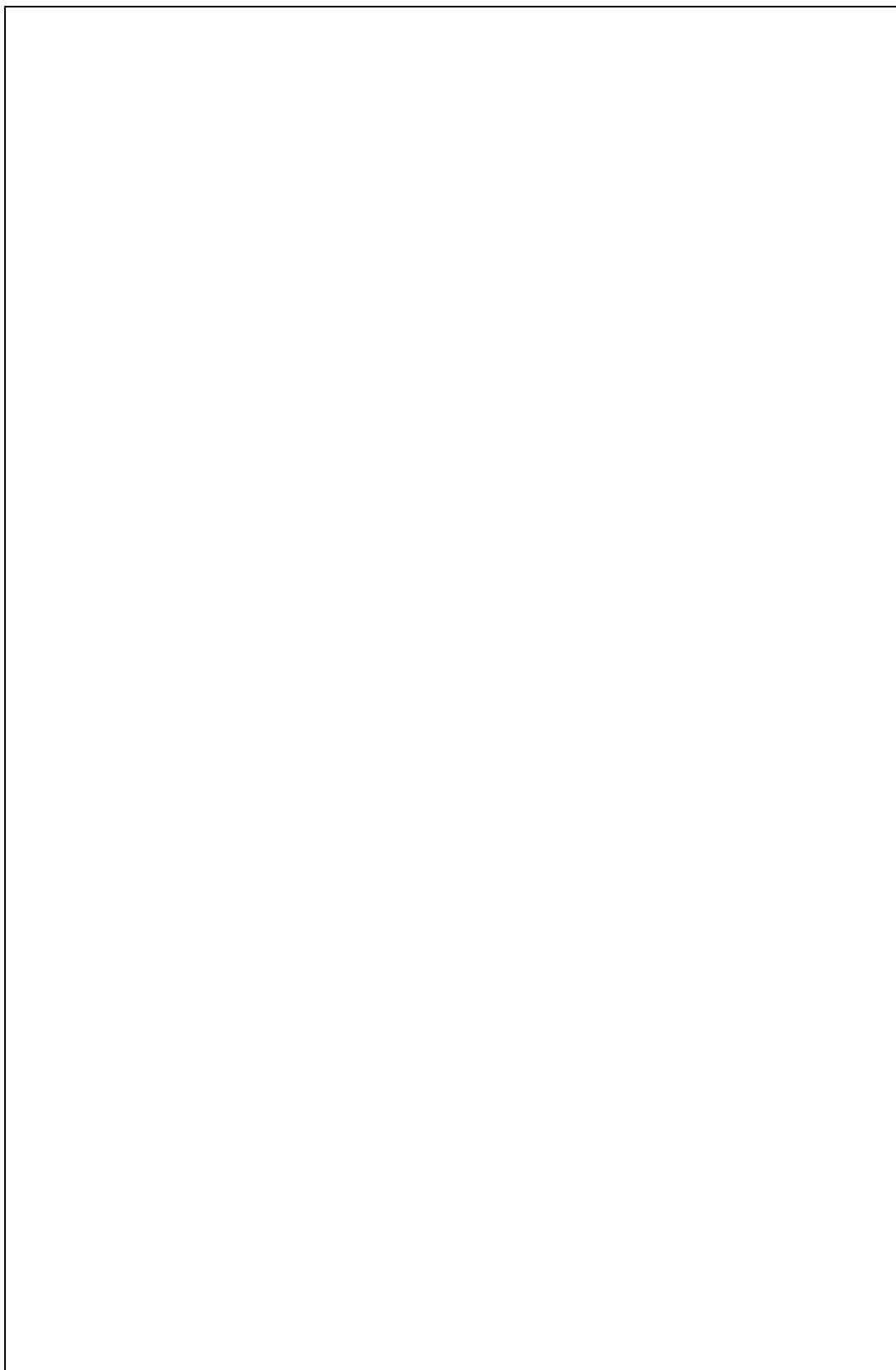
---

---

---

SL 3

40. **Draw** a Lapita Pottery pot and decorate it with Samoan Lapita designs. Use **lead** or **coloured** pencils.



SL 3

41. **Write** about the wooden carving *Orongo* below. What do you think Feu'u is telling us about his Samoan culture and history?



Figure 14. Fatu Feu'u *Orongo*, wooden sculpture 2018 source Brick bay Sculpture Trail Walk.


SL 3

42. **Discuss** this wooden carving *Leadership and Service* being carved by a group of artists at the Pacific Arts festival in American Samoa, in 2008.



**Figure 15. Group sculpture, Leadership and Service Pacific Arts Festival American Samoa, 2008.**

---

---

---

---

---

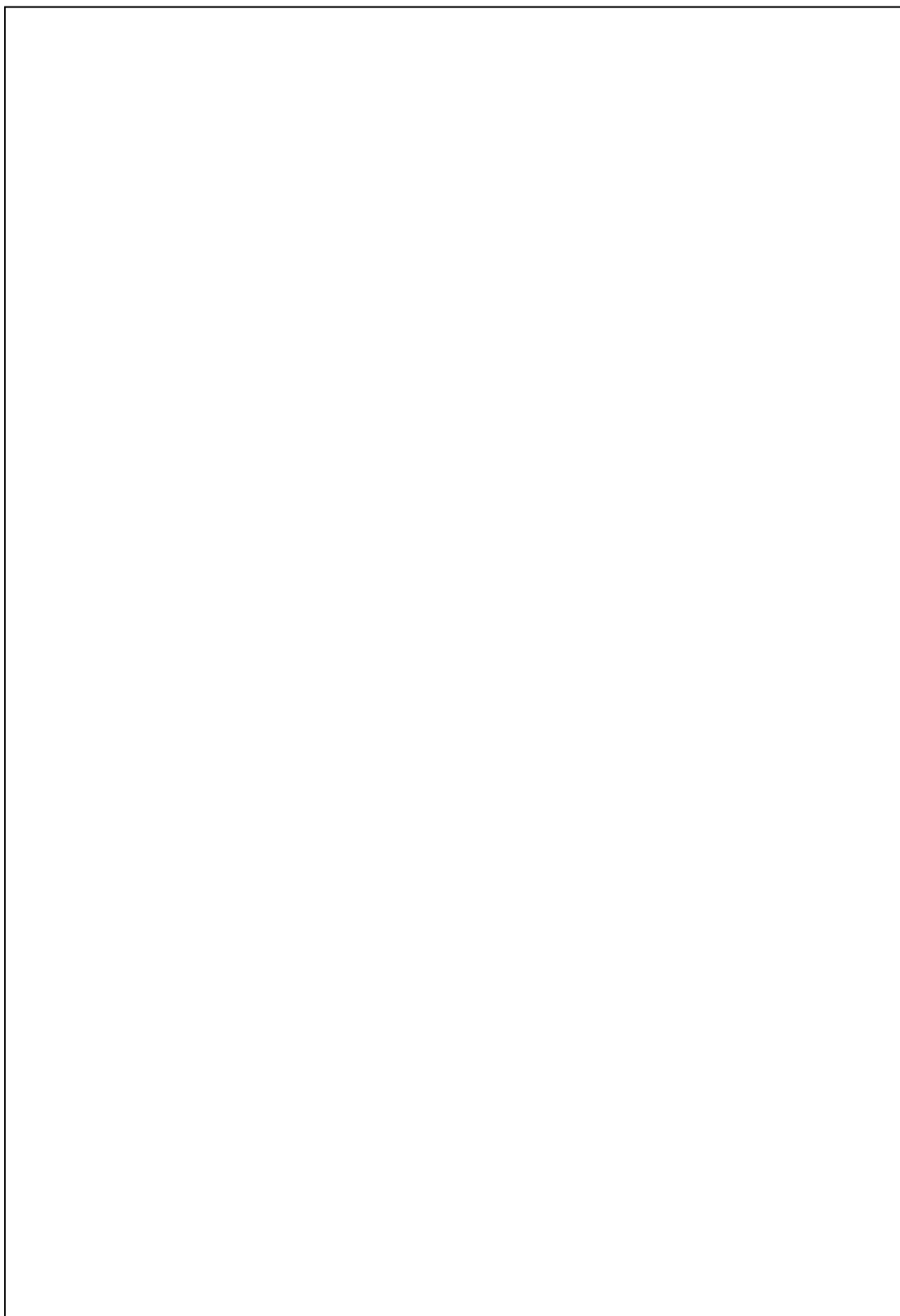
---

---

---

SL 4

43. **Draw** a three-dimensional carved sculpture based on Samoan cultural practices. Use **lead** or **coloured** pencils.



SL 4

STUDENT EDUCATION NUMBER									

## VISUAL ARTS

2020

(For Scorers only)

STRANDS	Weighting	Scores	Chief Scorer	Double Entry (AED)
<b>STRAND 1:</b> LEARNING ABOUT OUR ENVIRONMENT - PEOPLE	15			
<b>STRAND 2:</b> ELEMENTS AND PRINCIPLES OF ART – ELEMENT OF SPACE AND MOVEMENT	29			
<b>STRAND 3:</b> PATTERNS OF OCEANIA – ABORIGINAL ART	14			
<b>STRAND 4:</b> THE PRINCIPLES OF GRAPHIC DESIGN & ILLUSTRATION – ILLUSTRATION OF LEGENDS	14			
<b>STRAND 5:</b> THE LANGUAGE OF MULTI-MEDIA ART MODELING & CARVING	28			
<b>TOTAL</b>	<b>100</b>			