



STUDENT EDUCATION NUMBER									

Samoa Secondary Leaving Certificate

MUSIC

2021

QUESTION and ANSWER BOOKLET

Time allowed: 3 Hours & 10 minutes

INSTRUCTIONS

1. You have 10 minutes to read **before** you start the exam.
2. Write your **Student Education Number (SEN)** in the space provided on the top right hand corner of this page.
3. **Answer ALL QUESTIONS.** Write your answers in the spaces provided in this booklet.
4. If you need more paper to write your answers, ask the Supervisor for extra paper. Write your SEN on all extra sheets used and clearly number the questions. Attach the extra sheets at the appropriate places in this booklet.

STRANDS		Pages	Time (min)	Weighting
STRAND 1	GENERAL KNOWLEDGE	2	70	40
STRAND 2	COMPOSITION	6	70	40
STRAND 3	HISTORY	11	40	20
	TOTAL		180	100

Check that this booklet contains pages 2-14 in the correct order.

HAND THIS BOOKLET TO THE SUPERVISOR AT THE END OF THE EXAMINATION.

Study the melody below and answer Questions 1 – 8.



1. Insert the missing bar lines.

SL 1

2. What is the key signature?

SL 1

3. Identify the chord pitches of E7.

SL 1

4. A suitable tempo is *Allegro con moto*. What does this tempo mean?

SL 1

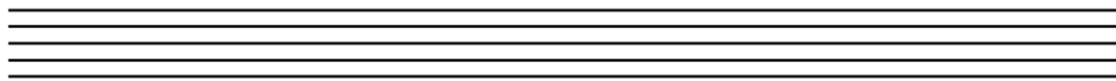
5. If there was a **Trill** written, what would that mean?

SL 1

6. D sharp is the enharmonic note of:

SL 1

7. List two examples of a **passing note** between two chord tones.



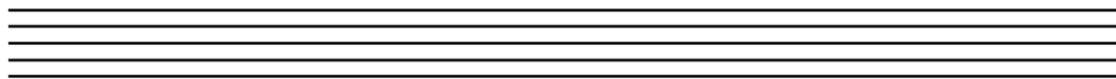
SL 2

8. A sixteenth note in the context of a Time signature is also known as:

SL 2

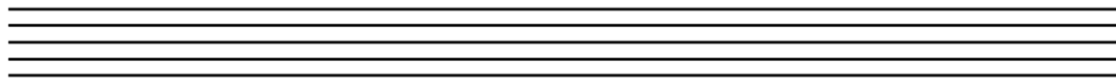
Answer Questions 9 – 15 about SCALES.

9. Write one octave ascending scale of G harmonic minor.



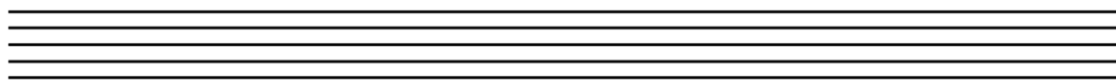
SL 2

10. Write one octave descending scale of F harmonic minor.



SL 2

11. Write one octave ascending scale of E harmonic minor.



SL 2

12. Describe what a semitone is and give an example.

SL 3

13. Describe what a tone is and give an example.

SL 3

14. Write an example of a perfect 4th and describe the number of tones.

SL 3

15. Describe the number of semitones in a diminished 6th and give an example.

SL 3

Answer Questions 16 – 18 about CHORDS.

16. Construct the triads of **I ii IV V** in the key of C major.

SL 4

17. The median, supertonic, submediant and leading note are also the equivalent of what chords in the key of Bb major? (e.g. the Tonic is Bb major chord).

SL 4

18. Discuss the intervals of a Major 7th chord.

SL 4

19. Compose the given waltz melody from bar 3 to bar 6 to complete 6 bars of music. Use the provided chords to select the notes for your melody.

Trumpet in C

SL 4

In the key of C Major, harmonize the following Roman numerals in root position as founded in many hymns for SATB.

20. I – V

SL 4

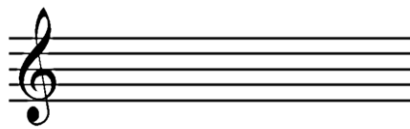
21. ii – V

SL 4

Study this piece of music in the Classical form for oboe and answer Questions 22 – 25 accordingly.

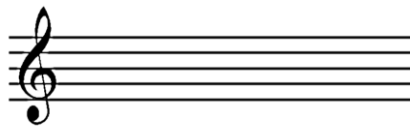


22. Transpose bar 1 and bar 2 in the key of C minor.



SL 3

23. Write three FULL chords of the last bar with reference to the notes of the melody. And add the Roman numerals below each chords correctly.

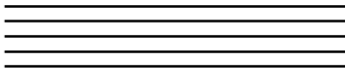
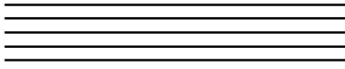


SL 3

24. Describe the meaning of the term Leading Note and give an example.

SL 3

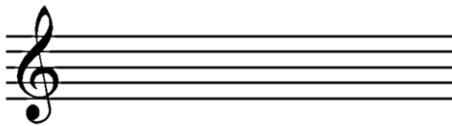
25. Write the **E minor 7th chord** in semibreves in the bass clef. In the treble clef, write the melodic form of that 7th chord in crotchets.



SL 3

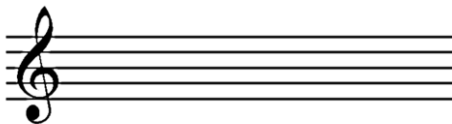
To compose jazz music well or any other form of music, one must memorize the degrees of notes in a chord. Answer Questions 26 – 30 accordingly.

26. Write an E minor chord and circle the **root**.



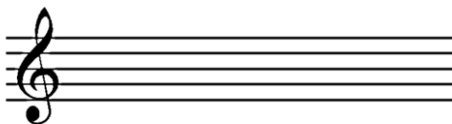
SL 2

27. Write a B major chord and circle the **5th**.



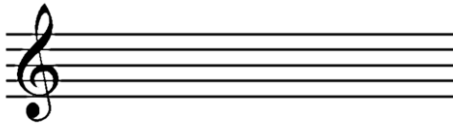
SL 2

28. Write an A minor chord and circle the **3rd**.



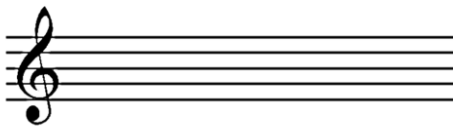
SL 2

29. Write an E diminished 7th chord and circle the 7th dim.



SL 2

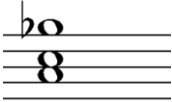
30. Notate the (V) **dominant 7 chord** of the above melody below.



SL 2


Any song writer or composer should be able to write chords from memory.
Write the appropriate note or notes in semibreve to complete the following chords
for Questions 31 – 36. All chords are written in the bass clef.

31. C7




SL 1

32. E min.



SL 1

33. D maj.



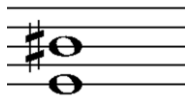
SL 1

34. Eb min.



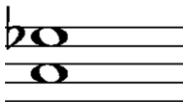
SL 1

35. G aug.



SL 1

36. C dim.



SL 1

Select **ONE** music of Samoa with lyrics (*e.g. o pese lotu, pese fa'aleaganuu or a Samoa pop music*) and answer Questions 37 – 44.

37. Name a Samoan music of your choice.

SL 1

38. Write a brief description of the composer of your selected music piece.

SL 2

39. What is the style of your selected music piece and name another piece of music similar to the music selected?

SL 2

40. In what year was your selected music piece written and name an important event in Samoa or in the world when this music was first performed via radio or TV?

SL 2

41. Explain why the song writer or the composer selected the key signature and the time signature.

SL 3

42. Explain why the choice of instruments and voices was suitable for your selected music piece.

SL 3

43. Describe the chords used in your selected music piece and state an example.

SL 3

44. Discuss the meaning of the words or lyrics in your selected music piece.

SL 4

STUDENT EDUCATION NUMBER									

MUSIC

2021

(For Scorer only)

STRANDS		Weighting	Scores	Check Scorer	AED check
STRAND 1	GENERAL KNOWLEDGE	40			
STRAND 2	COMPOSITION	40			
STRAND 3	HISTORY	20			
TOTAL		100			