



GOVERNMENT OF SAMOA  
MINISTRY OF EDUCATION, SPORTS AND CULTURE

STUDENT EDUCATION NUMBER									

# Samoa National Junior Secondary Certificate

# COMPUTER STUDIES

# 2022

## QUESTION and ANSWER BOOKLET

Time allowed: 3 Hours & 10 minutes

### INSTRUCTIONS

1. You have 10 minutes to read **before** you start the exam.
2. Write your **Student Education Number (SEN)** in the space provided on the top right hand corner of this page.
3. **Answer ALL QUESTIONS.** Write your answers in the spaces provided in this booklet.
4. If you need more space, ask the Supervisor for extra paper. Write your SEN on all extra sheets used and clearly number the questions. Attach the extra sheets at the appropriate places in this booklet.

STRANDS		Pages	Time (min)	Weighting
STRAND 1	PERSONAL COMPUTER SYSTEMS AND MANAGEMENT	2-8	72	40
STRAND 2	USING PERSONAL COMPUTER APPLICATIONS	9-14	72	40
STRAND 3	FUNDAMENTALS OF COMPUTER PROGRAMMING	15-17	36	20
<b>TOTAL</b>			<b>180</b>	<b>100</b>

Check that this booklet contains pages 2-18 in the correct order.

**HAND THIS BOOKLET TO THE SUPERVISOR AT THE END OF THE EXAMINATION.**

For Questions 1 to 4, choose and write the LETTER of the correct answer in the box provided.

1. The screen or monitor is also known as:

- A. System Unit.
- B. Media Player.
- C. Visual Display Unit.
- D. Software Application.
- E. Read Only Memory.

	SL 1

2. Which software application is used to create presentations?

- A. Microsoft Excel.
- B. Microsoft PowerPoint.
- C. Microsoft Word.
- D. Media Player.
- E. Microsoft Access.

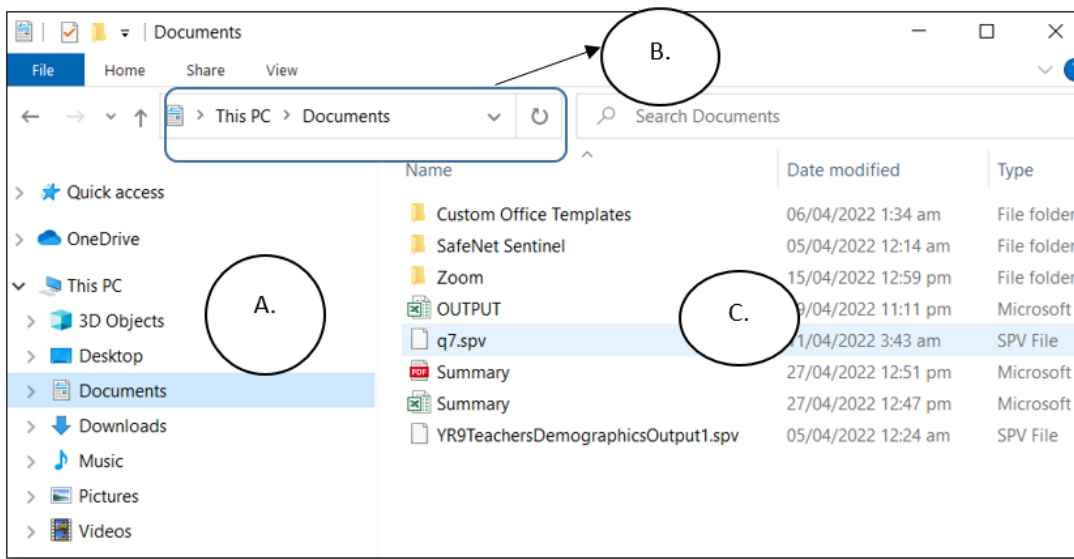
	SL 1

3. All of these are Storage devices except:

- A. Flash drive.
- B. Hard drive.
- C. CD.
- D. DVD.
- E. MS Word.

	SL 1

**Figure 1:**



4. Identify the pane labelled **A** in Figure 1.

- A. Folders.
- B. Files.
- C. Address Bar.
- D. Title Bar.
- E. All folders and files.

	<b>SL 1</b>

5. Give a simple definition for each of the following components.

System Unit:

---



---

Mouse:

---



---

<b>SL 2</b>

6. Computer teacher Sione always makes sure that the computer lab was a safe environment by following different rules. State the **TWO** images and in your own words, explain the two images displayed in Sione’s computer lab and the reason why they are to be followed.

**Figure 2**



---

---

---

---

---

---

---

---

SL 2

7. Differentiate between **Warm Start** and **Cold Start**.

---

---

---

---

---

---

---

---

---

---

SL 3

8. Define Secondary Memory.

---

---

---

---

SL 2

9. What does RAM stand for and what is RAM?

---

---

---

---

SL 2

10. Describe the advantages of disk storage, using an external device or a flash drive to store data.

---

---

---

---

---

---

SL 2

11. Explain the flow of information between RAM and ROM.

---

---

---

---

---

---

---

---

---

---

---

SL 3

12. Differentiate between bit and byte, provide examples to support your answer.

---

---

---

---

---

---

---

---

---

---

SL 3

13. Provide **TWO** examples of an Operating System.

---

---

---

---

SL 2

14. Describe the basic elements of GUI (Graphic User Interface) and how it works.

---

---

---

---

SL 2

15. Differentiate between a file and a folder.

---

---

---

---

---

---

---

---

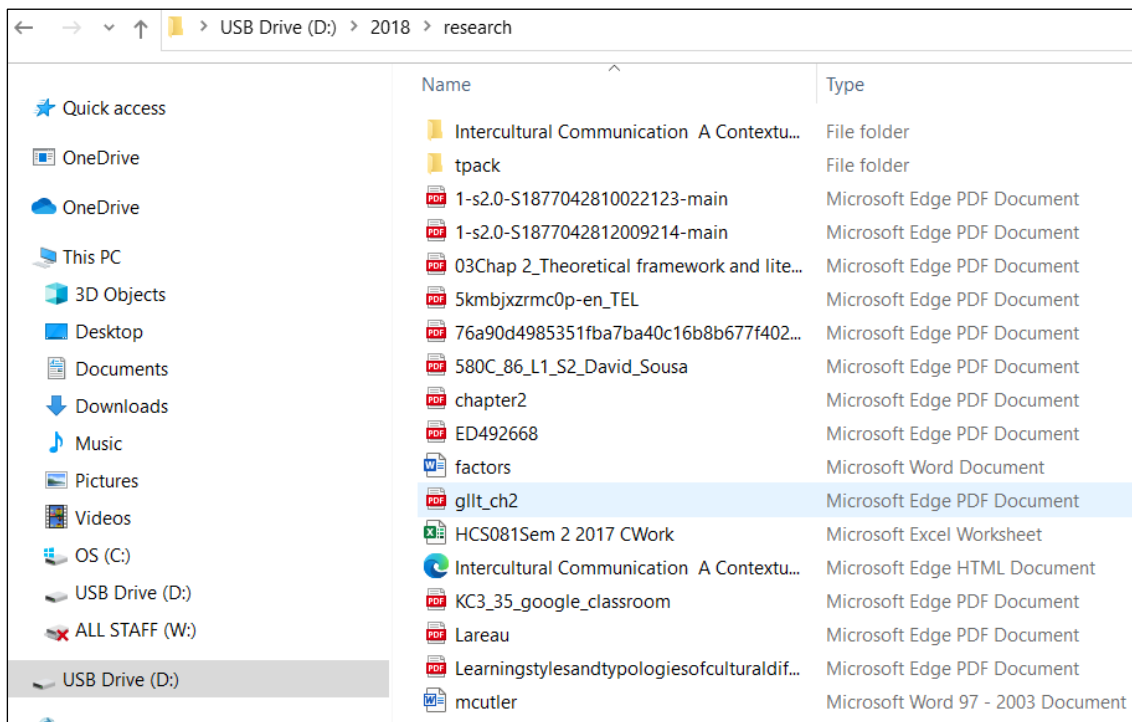
---

---

SL 3

Use the hierarchy below (Figure 3) to answer Question 16.

**Figure 3:**



16. Write the full name with the correct extension for the file **factors**, and provide the main pathway for HCS081Sem 2 2017 CWork.

---

---

---

---

---

---

---

---

---

---

---

---

---

---

---

---

---

SL 4

17. Discuss the different ethical issues or impact of computers in society with reference to legal, ethical and social issues.

---

---

---

---

---

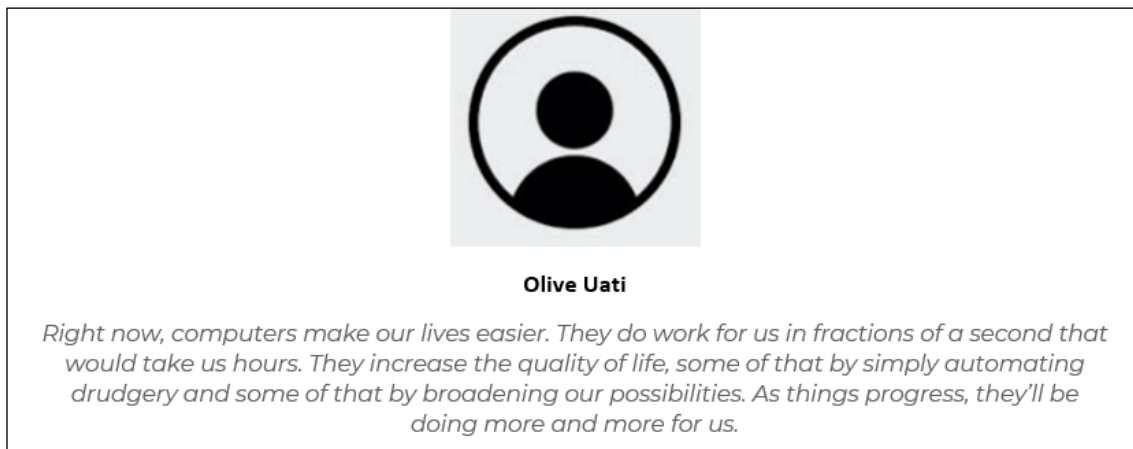
---

SL 2

18. Carefully read the scenario given below, state the ethical issues involved and impacts that may arise from this, discuss suggestions or ways to resolve these issues.

Olive was tasked to create an email account so that he is able to access the computer resources online. He is required to have a profile picture and personal data so that his information is visible for everyone to know about him. He selected a random picture of someone from the internet and copied a phrase from a motivational website online from Steve Jobs for his profile.

**Figure 4:**



---

---

---

---

---

---

---

---

---

---

SL 4



For Questions 19 – 22, choose and write the LETTER of the correct answer in the box provided.

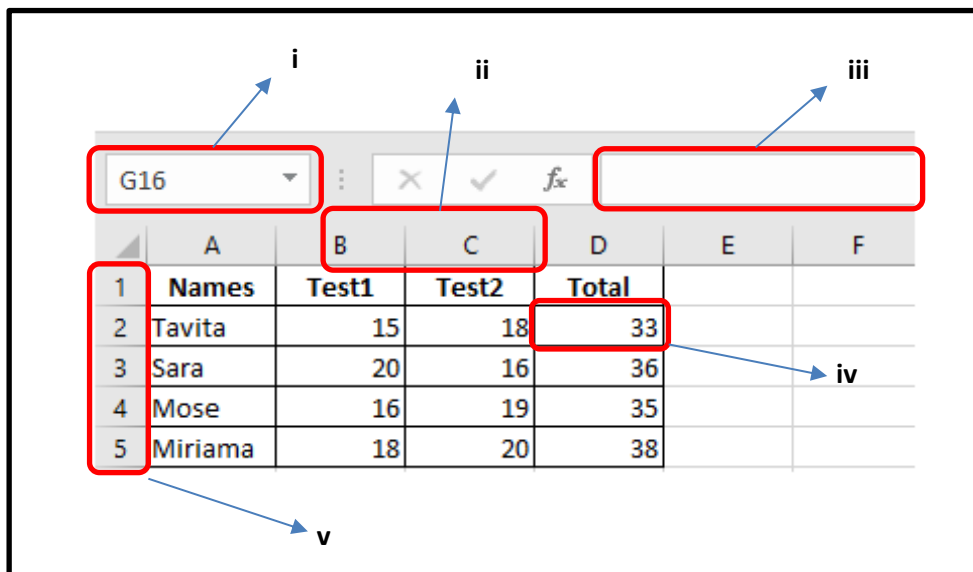
19. The two types of paper orientation are known as:

- A. Normal and Print Layout.
- B. Landscape and Portrait.
- C. Print Preview and Reading Layout.
- D. 1.5 and double line spacing.
- E. Word Art and A4 paper orientation.

	SL 1

20. Using **Figure 5**, what is labelled iii ?

**Figure 5:**



- A. Active Cell.
- B. Name Box.
- C. Rows.
- D. Columns.
- E. Formula Bar.

	SL 1

21. The three cell references are known as:

- A. Text, formula and value.
- B. Range, union and absolute.
- C. Row, column and cells.
- D. Absolute, relative and mixed.
- E. Excel, spreadsheet and database.

	SL 1

22. The four database objects are known as:

- A. Flat file, Relational, Ascending and Descending.
- B. Spreadsheet, SQL, Excel and Database.
- C. Tables, Query, Form and Report.
- D. Primary key, Foreign key, Relationship and Query.
- E. Report, Form, Relationship and Query.

	SL 1

23. Clearly define the terms below:

Increase Indent:

---

---

Decrease Indent:

---

---

SL 2

24. Name the **FOUR** text alignments.

- (i). \_\_\_\_\_
- (ii). \_\_\_\_\_
- (iii). \_\_\_\_\_
- (iv). \_\_\_\_\_

SL 2

25. Explain the entry error known as #####.

\_\_\_\_\_

\_\_\_\_\_

\_\_\_\_\_

\_\_\_\_\_

\_\_\_\_\_

SL 2

26. State the column, row and cell using the **Figure 6**.

**Figure 6:**

	B
2	\$55.00

Column: \_\_\_\_\_

Row: \_\_\_\_\_

Cell: \_\_\_\_\_

SL 3

27. Write the formula to calculate Tavita's total marks in Cell D2 in **Figure 7**.

**Figure 7:**

	A	B	C	D
1	<b>Names</b>	<b>Test1</b>	<b>Test2</b>	<b>Total</b>
2	Tavita	15	18	33
3	Sara	20	16	36
4	Mose	16	19	35
5	Miriama	18	20	38

\_\_\_\_\_

\_\_\_\_\_

\_\_\_\_\_

\_\_\_\_\_

\_\_\_\_\_

SL 4

28. Define Spreadsheet.

---

---

---

---

SL 2

29. Explain the advantages of using a Spreadsheet.

---

---

---

---

---

---

---

---

---

---

---

---

SL 3

30. Describe the advantages of using a database.

---

---

---

---

---

SL 2

31. Compare a Flat File vs a Relational Database.

---

---

---

---

---

SL 3

32. Explain a Primary Key in a database table.

---

---

---

---

---

---

---

---

---

---

SL 3

33. Explain a database Query.

---

---

---

---

---

---

---

---

---

---

SL 3

34. Explain a database Report.

---

---

---

---

---

---

---

---

---

---

SL 3

**Figure 8:**

ActorID	FirstName	LastName	Gender	Country
AH100007	Anne	Hathaway	F	USA
AP100019	Anna	Paquin	F	Canada
BA100009	Ben	Affleck	M	USA
BB100015	Benjamin	Bratt	M	USA
BF100004	Brendan	Fraser	M	Canada
BR101010	Brat	Pitt	M	Canadian
DC100006	Daniel	Craig	M	England
DJ100002	Dwayne	Johnson	M	USA

35. Use **Figure 8** to create a query that will show **only** the **LastNames** of the **Females** from **Canada and descending order by FirstName**. Fill in the correct criteria in the table (**Table 1**).

**Table 1:**

Field:	ActorID	FirstName	LastName	Gender	Country
Table:	Actor	Actor	Actor	Actor	Actor
Sort:					
Show:	<input type="checkbox"/>	<input type="checkbox"/>	<input type="checkbox"/>	<input type="checkbox"/>	<input type="checkbox"/>
Criteria:					

SL 4

For Questions 36 – 37, choose and write the LETTER of the correct answer in the box provided.

36. An example of a Computer Programming Language is:

- A. HP+
- B. C++
- C. Lenovo
- D. Dell
- E. iPad

	SL 1

37. What is an appropriate **title** to name the set of tasks stated in the following algorithm?

**Start**, Turn computer switch on, press Enter+Ctrl+Del together, Enter in Username, Type in Password, Press Enter key, **End**

- A. Making a cup of Coffee.
- B. Log in a Computer.
- C. Install an anti-virus.
- D. Creating a Word Document.
- E. Adding 2 numbers.

	SL 1

38. Define Computer Programming.

---



---



---



---

SL 2

39. Define algorithms.

---



---



---



---

SL 2

40. Explain the purpose of a Computer Program.

---

---

---

---

---

---

---

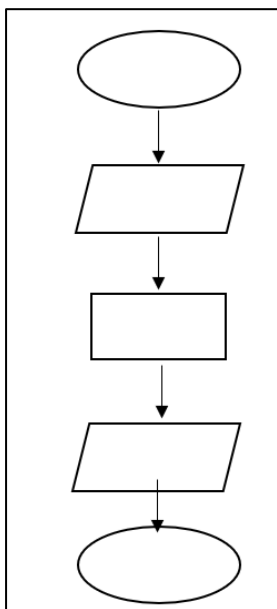
---

---

---

SL 3

**Figure 9:**



41. Explain and identify the different stages (shapes) of the flow chart. (Figure 9).

---

---

---

---

---

---

---

---

---

---

SL 3



42. Given the problem  $45-10=35$ . Explain the steps on how the user would go about in solving this in terms of programming input, process and output.

---

---

---

---

---

---

---

---

---

---

---

---

---

---

---

---

---

---

---

---

---

---

---

SL 4

43. If you are to add two numbers 6 and 5 using a computer program, draw a simple logical flowchart to show how the user may enter the two numbers, add and the program displays the answer.

---

---

---

---

---

---

---

---

---

---

---

---

---

---

---

---

---

---

---

---

---

---

---

SL 4

STUDENT EDUCATION NUMBER									

## COMPUTER STUDIES

2022

*(For Scorers only)*

STRANDS		Weighting	Scores	Check Scorer	AED Check
<b>STRAND 1</b>	PERSONAL COMPUTER SYSTEMS AND MANAGEMENT	40			
<b>STRAND 2</b>	USING PERSONAL COMPUTER APPLICATIONS	40			
<b>STRAND 3</b>	FUNDAMENTALS OF COMPUTER PROGRAMMING	20			
<b>TOTAL</b>		<b>100</b>			