



GOVERNMENT OF SAMOA  
MINISTRY OF EDUCATION, SPORTS AND CULTURE

STUDENT EDUCATION NUMBER									

# Samoa National Junior Secondary Certificate

# MUSIC

# 2022

## QUESTION and ANSWER BOOKLET

Time allowed: 3 Hours & 10 minutes

### INSTRUCTIONS

1. You have 10 minutes to read **before** you start the exam.
2. Write your **Student Education Number (SEN)** in the space provided on the top right hand corner of this page.
3. **Answer ALL QUESTIONS.** Write your answers in the spaces provided in this booklet.
4. If you need more paper to write your answers, ask the Supervisor for extra paper. Write your SEN on all extra sheets used and clearly number the questions. Attach the extra sheets at the appropriate places in this booklet.

STRANDS		Pages	Time (min)	Weighting
<b>STRAND 1</b>	MUSIC APPRECIATION	2-11	90	50
<b>STRAND 2</b>	MUSIC PERFORMANCE	12-14	47	26
<b>STRAND 3</b>	MUSIC HISTORY	15-18	43	24
<b>TOTAL</b>			<b>180</b>	<b>100</b>

Check that this booklet contains pages 2-19 in the correct order.

**HAND THIS BOOKLET TO THE SUPERVISOR AT THE END OF THE EXAMINATION.**

For Questions 1 – 10, choose and write the LETTER of the correct answer in the box provided.

1. The top number (6) refers to:

- A. the number of notes in a bar.
- B. the number of rests in a bar.
- C. six beats in a bar.
- D. a rounded number.




SL 1

2. The bottom number (8) refers to:

- A. a type of note to be used as one beat.
- B. a semiquaver note equivalent.
- C. eight beats in a bar.
- D. a whole number.




SL 1

3. How many beats are shown in the extract below?

- A. 6
- B. 4
- C. 9
- D. 12




SL 1

4. How many beats are shown in the extract below?

- A. 6
- B. 3
- C. 5
- D. 7




SL 1



8. Name this note in the extract below:



- A. D
- B. E
- C. F
- D. C

SL 1

9. An *Interval* means:

- A. the distance between three notes.
- B. the length of two notes.
- C. the distance of two notes harmonically or melodically.
- D. the descending motion of two notes.

SL 1

10. To what instrument family does the *French Horn* belongs?

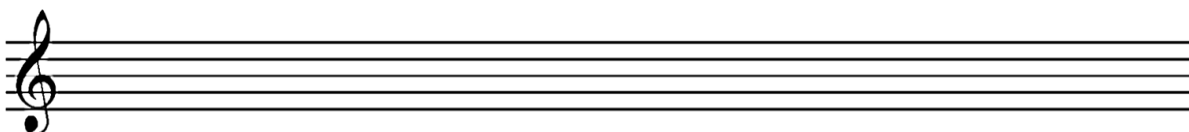
- A. String.
- B. Brass.
- C. Woodwind.
- D. Percussion.

SL 1

11. Describe the *Enharmonics* of the bar given below. Use the staff provided to write your answers.



SL 1



12. Circle a passing note on the extract below.

D Major Chord

SL 1

13. Define the term *Syllables*. You may use an example.

---



---



---



---



---

SL 1

14. Write the appropriate notes to complete two chords below. Use the staff provided to write your answers.

C Diminished Chord

G Augmented Chord

SL 2

15. Identify the **TWO** compound intervals. Write your answer A, B, C, D or E on the space provided below.

A

B

C

D

E

SL 2

---



Write the ascending and descending scale of the Natural Minor scale of G minor for Question 19.

19. Use the treble clef. Apply the given rhythm to write your scale. Write the scale without a Key Signature.



SL 2

Two sets of blank five-line musical staves for writing the scale.

Write the ascending and descending scale of C Natural Minor for Question 20.

20. Use the treble clef. Apply the given rhythm to write your scale. Write the scale without a Key Signature.



SL 2

Two sets of blank five-line musical staves for writing the scale.

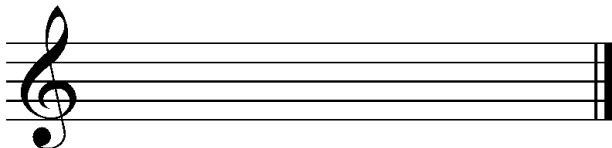
21. List **TWO** general principles of *Tonal Sequence*.

Two blank lines for writing the answer.

SL 2

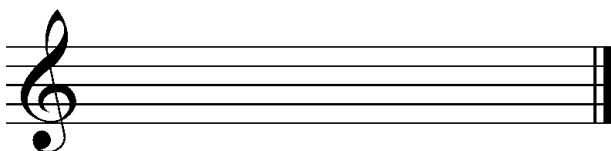
22. Write the first three notes of the following scales. Use semibreves to write your answer.

C Minor Scale

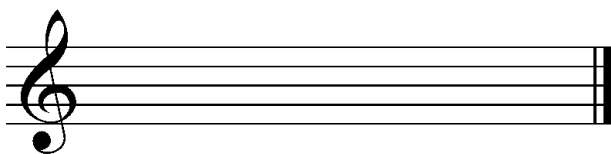


SL 3

E<sub>b</sub> Major Scale



A Minor Scale



23. Identify the three mistakes of the use of Tie Notes. Write the bar numbers with the mistakes on the space provided below.



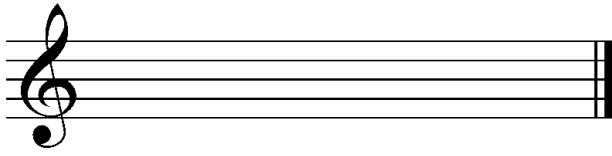
- (a) \_\_\_\_\_
- (b) \_\_\_\_\_
- (c) \_\_\_\_\_

SL 3



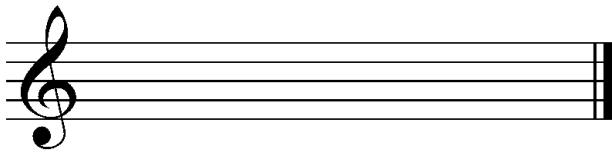
24. Write the **TONIC Chord** of the following keys.

Bb Major

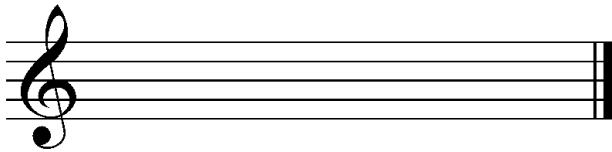


SL 3

A Major

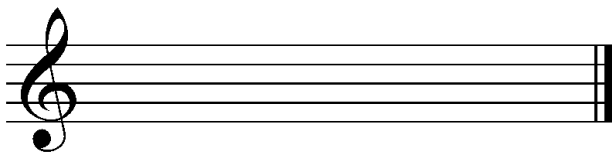


Eb Major



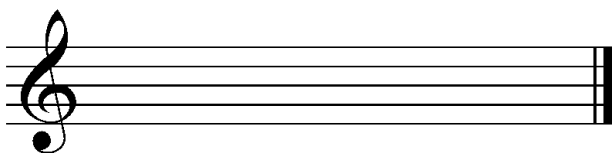
25. Write the **SUBDOMINANT Chord** of the following keys.

D Major



SL 4

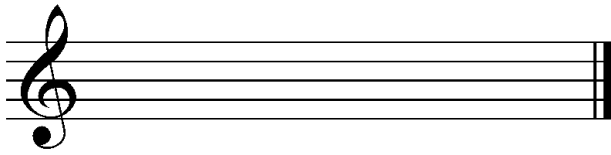
B Minor



E Major

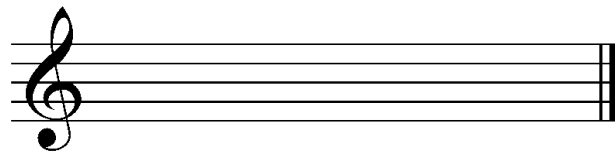


F# Minor



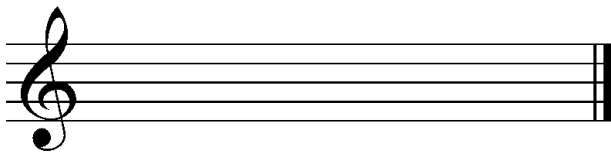
26. Write the **DOMINANT Chord** of the following keys.

A Minor

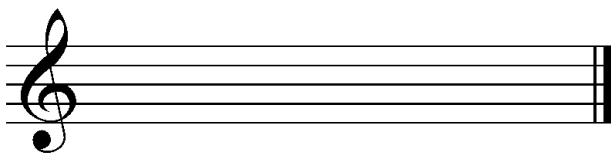


SL 4

C Major



Eb Major







31. Provide the three technical names of the *articulations* in this extract. Write your answers in the spaces below.



\_\_\_\_\_

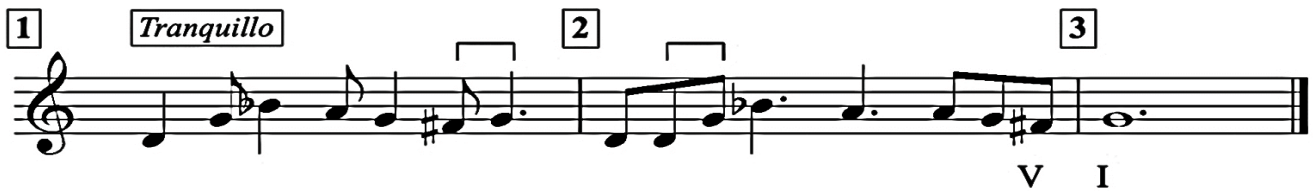
\_\_\_\_\_

\_\_\_\_\_

\_\_\_\_\_

SL 3

Look at this extract and answer the Questions 32 – 33.



32. (a) What is the key signature? \_\_\_\_\_

- (b) What is the time signature? \_\_\_\_\_

- (c) What does *Tranquillo* mean? \_\_\_\_\_

SL 3

33. (a) What is the interval marked with a bracket in bar 1 \_\_\_\_\_

- (b) Name the interval marked with a bracket in bar 2 \_\_\_\_\_

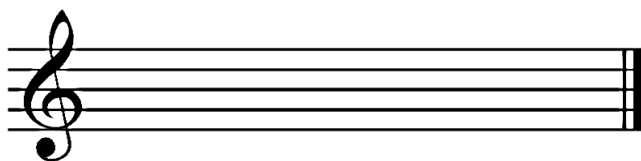
- (c) What is the cadence marked with V – I \_\_\_\_\_

SL 3

Study the Extract to answer Questions 34 – 36.

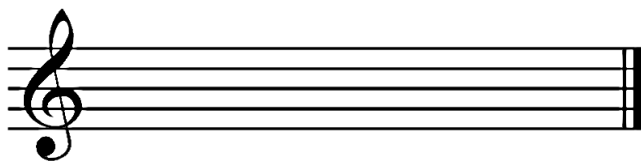


34. Transpose Bar 1 an octave higher (up).



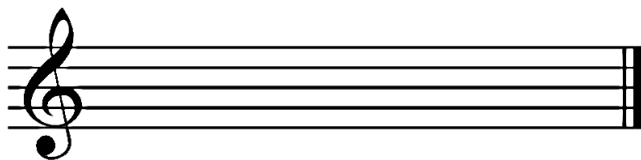
SL 4

35. Transpose bar 2 a perfect 4<sup>th</sup> higher (up).



SL 4

36. Transpose bar 3 a perfect 5<sup>th</sup> lower (down).



SL 4

Read each question carefully and then write your answer in the spaces provided.

37. Name a non-classical style genre of the 20<sup>th</sup> century.

\_\_\_\_\_

SL 1

38. Name an influential composer of the classical style of music of the 20<sup>th</sup> century.

\_\_\_\_\_

SL 1

39. Outline **TWO** composition or song writing techniques commonly used in the music of the 20<sup>th</sup> century.

\_\_\_\_\_  
\_\_\_\_\_  
\_\_\_\_\_  
\_\_\_\_\_  
\_\_\_\_\_

SL 2

40. List **TWO** styles of music from two different cultures (or countries).

\_\_\_\_\_  
\_\_\_\_\_  
\_\_\_\_\_  
\_\_\_\_\_

SL 2









STUDENT EDUCATION NUMBER									

# MUSIC

2022

(For Scorer only)

STRANDS		Weighting	Scores	Check Scorer	AED check
STRAND 1	MUSIC APPRECIATION	50			
STRAND 2	MUSIC PERFORMANCE	26			
STRAND 3	MUSIC HISTORY	24			
<b>TOTAL</b>		<b>100</b>			