



GOVERNMENT OF SAMOA  
MINISTRY OF EDUCATION, SPORTS AND CULTURE

STUDENT EDUCATION NUMBER									

# Samoa National Junior Secondary Certificate

# VISUAL ARTS

# 2022

## QUESTION and ANSWER BOOKLET

Time allowed: 3 Hours & 10 minutes

### INSTRUCTIONS

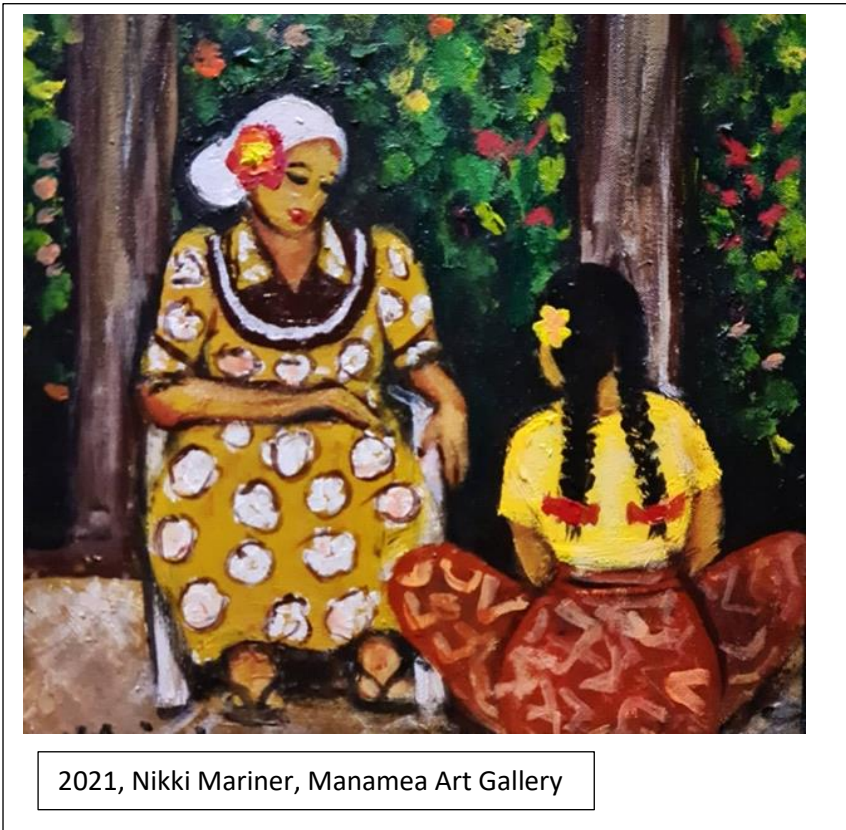
1. You have 10 minutes to read **before** you start the exam.
2. Write your **Student Education Number (SEN)** in the space provided on the top right-hand corner of this page.
3. **Answer ALL QUESTIONS.** Write your answers in the spaces provided in this booklet.
4. If you need more paper to write your answers, ask the Supervisor for extra paper. Write your SEN on all extra sheets used and clearly number the questions. Attach the extra sheets at the appropriate places in this booklet.

THEMATIC UNITS		Pages	Time (min)	Weighting
1	MY SAMOAN IDENTITY	2-5	52	29
2	SAMOAN TRADITIONAL ARTS	6-9	43	24
3	SAMOAN OUR LAND, OUR HERITAGE	10-14	50	27
4	SAMOAN ORATORY, PROVERBS AND LEGENDS	15-18	35	20
<b>TOTAL</b>			<b>180</b>	<b>100</b>

Check that this booklet contains pages 2-19 in the correct order.

**HAND THIS BOOKLET TO THE SUPERVISOR AT THE END OF THE EXAMINATION.**

Use the image below to answer Questions 1 – 13.



Choose the BEST answer and write the correct letter in the box provided for Question 1.

1. Which art media is the above artwork?

- A. Carving
- B. Painting
- C. Installation
- D. Print making

SL 1

2. Describe the importance of the colour wheel.

---

---

SL 1

3. Identify a warm colour from the painting (on page 2).

---

---

SL 1

4. What is pattern in art?

---

---

SL 1

5. In the painting, where and how is shape used?

---

---

---

---

---

SL 2

6. Explain the use of cool colours in the painting.

---

---

---

---

---

---

---

---

---

SL 3

7. Which area of the artwork depicts the time of day?

---

---

---

---

---

SL 2

8. Describe **ONE** feature from the artwork (on page 2) that may relate to your family upbringing.

---

---

---

---

---

SL 2

9. Describe the use of patterns in the artwork (on page 2).

---

---

---

---

---

SL 2

10. Explain how the artist has used painting techniques to show form.

---

---

---

---

---

---

---

---

---

---

SL 3

11. How has the artist used composition to show identity?.

---

---

---

---

---

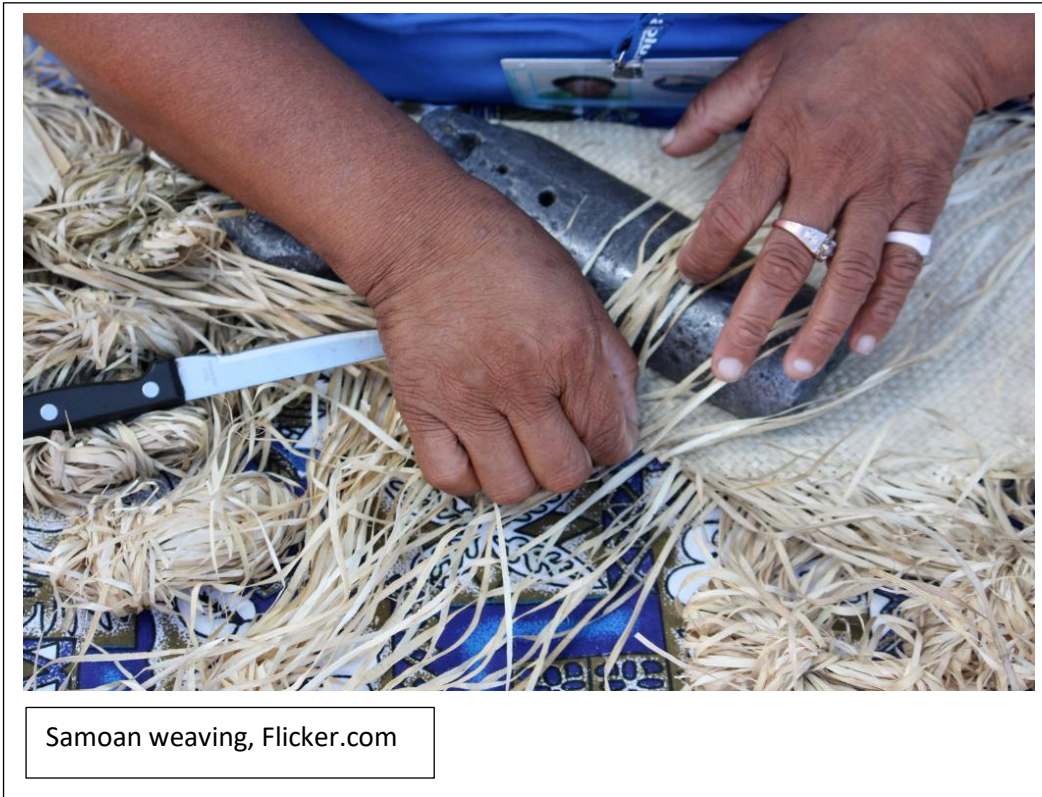
---

---

SL 3



Use the image below to answer items 14 – 24.



Choose the BEST answer and write the correct letter in the box provided for Questions 14 to 17.

14. What is being woven in the picture?.

- A. A bag.
- B. A basket.
- C. A fine mat.
- D. A sleeping mat.

	SL 1

15. In Samoa, the woven object above, is also known as the sacred:

- A. leaf.
- B. cloth.
- C. basket.
- D. money.

	SL 1

16. Pattern is a principle of art in weaving because it:

- A. focuses on texture.
- B. is used to create mood.
- C. visually shows repetition.
- D. adds volume to the artwork.

	SL 1

17. The technique used in weaving is called:

- A. rolling.
- B. drawing.
- C. pressing.
- D. interlacing.

	SL 1

18. Describe in your own words the technique of weaving.

---

---

---

---

---

SL 2

19. Describe the features of a contemporary weaving.

---

---

---

---

---

SL 2

20. State which forms of dimension is weaving.

---

---

---

SL 2

21. Explain the importance for weaving the object in the picture on page 6.

---

---

---

---

---

---

---

---

---

---

SL 3

22. There are changes in materials used for Samoan weaving nowadays. Explain some of these changes.

---

---

---

---

---

---

---

---

---

---

SL 3

23. Most women committee in the villages come together to weave fine mats. Explain how this has contributed to weaving.

---

---

---

---

---

---

---

---

---

---

SL 4





Use the image below to answer Questions 25 – 35.



25. Study the set of three paintings above. What can you see in the middle painting?

\_\_\_\_\_

\_\_\_\_\_

SL 1

26. What do you think is happening in the set of paintings?

\_\_\_\_\_

\_\_\_\_\_

\_\_\_\_\_

\_\_\_\_\_

SL 1

27. Name a warm colour used in the set of paintings (on page 10).

---

---

SL 1

28. In art, what is texture?

---

---

SL 2

29. Describe the background of the set of paintings (on page 10).

---

---

---

---

---

SL 2

30. Describe the use of shapes in the set of paintings (on page 10).

---

---

---

---

---

---

---

---

---

SL 2

31. Explain the difference between the three paintings (on page 10).

---

---

---

---

---

---

---

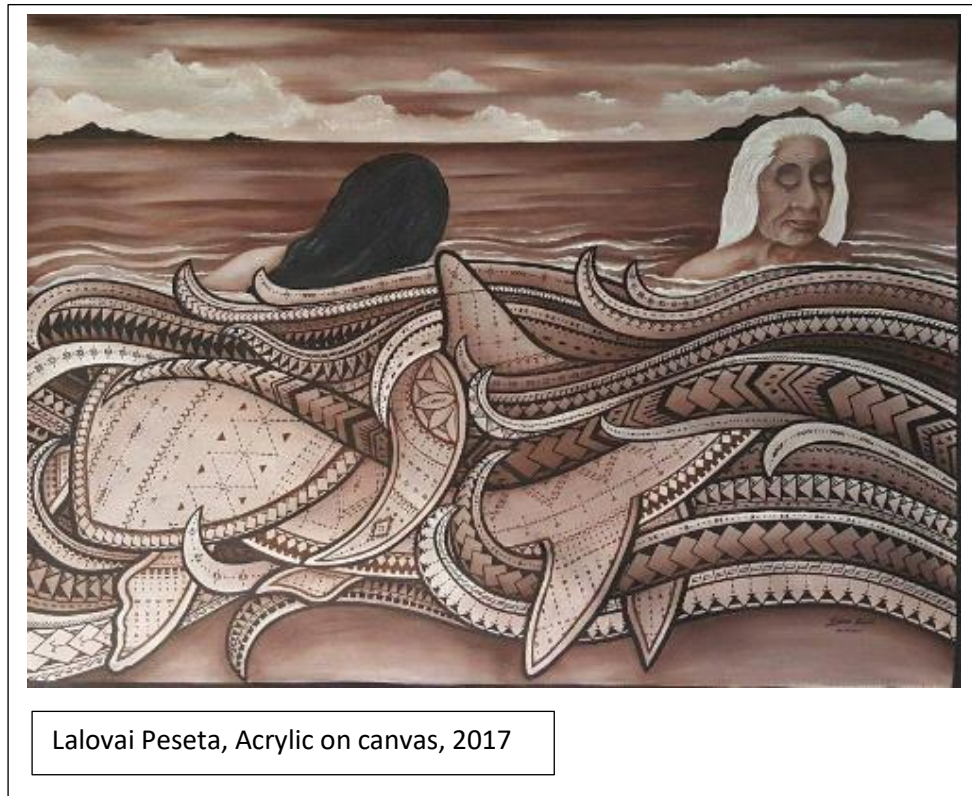
SL 3







Use the image below to answer Questions 36 – 44.



36. What colours are prominent throughout the artwork?.

\_\_\_\_\_

\_\_\_\_\_

SL 1

37. What media is used in the artwork?.

\_\_\_\_\_

\_\_\_\_\_

SL 1

38. What is the subject matter of the artwork?.

\_\_\_\_\_

\_\_\_\_\_

SL 1

39. Describe the patterns in the artwork (on page 15).

---

---

---

---

---

SL 2

40. Describe the setting of the artwork (on page 15).

---

---

---

---

---

SL 2

41. Describe the choice of designs used in the artwork (on page 15).

---

---

---

---

---

SL 2

42. Artist have different styles in creating artworks, explain the style used in the artwork (on page 15).

---

---

---

---

---

---

---

---

---

---

---

SL 3





---

---

---

---

---

---

---

---

---

---

STUDENT EDUCATION NUMBER									

## VISUAL ARTS

2022

(For Scorer only)

STRANDS		Weighting	Scores	Check Scorer	AED Check
<b>STRAND 1:</b>	MY SAMOAN IDENTITY	29			
<b>STRAND 2:</b>	SAMOAN TRADITIONAL ARTS	24			
<b>STRAND 3:</b>	SAMOA OUR LAND, OUR HERITAGE	27			
<b>STRAND 4:</b>	SAMOAN ORATORY, PROVERBS AND LEGENDS	20			
<b>TOTAL</b>		<b>100</b>			