



GOVERNMENT OF SAMOA  
MINISTRY OF EDUCATION, SPORTS AND CULTURE

STUDENT EDUCATION NUMBER									

# Samoa School Certificate

# GEOGRAPHY 2022

## QUESTION and ANSWER BOOKLET

Time allowed: 3 Hours & 10 minutes

### INSTRUCTIONS

1. You have 10 minutes to read **before** you start the exam.
2. Write your **Student Education Number (SEN)** in the space provided on the top right hand corner of this page.
3. **Answer ALL QUESTIONS.** Write your answers in the spaces provided in this booklet.
4. If you need more space, ask the Supervisor for extra paper. Write your SEN on all extra sheets used and clearly number the questions. Attach the extra sheets at the appropriate places in this booklet.

STRANDS		Pages	Time (min)	Weighting
STRAND 1:	PHYSICAL ENVIRONMENT	2 - 8	36	20
STRAND 2:	POPULATION AND SETTLEMENT	9 - 15	36	20
STRAND 3:	DEVELOPMENT STUDIES	16 - 22	36	20
STRAND 4:	RESOURCES AND THEIR USES – FARMING AND MINING	23 - 28	36	20
STRAND 5:	ENVIRONMENTAL ISSUES	29 - 35	36	20
	TOTAL		180	100

Check that this booklet contains pages 2-36 in the correct order.

**HAND THIS BOOKLET TO THE SUPERVISOR AT THE END OF THE EXAMINATION.**

For Questions 1 – 5, choose the **BEST** answer and write the correct letter in the box provided.

1. The average weather condition in a given place over a longer period of time is:

- A. Season.
- B. Atmosphere.
- C. Weather.
- D. Climate.

SL 1

2. Volcanic island arcs are associated with:

- A. transform plate boundaries.
- B. subduction plate boundaries.
- C. ocean – ocean convergent plate boundaries.
- D. ocean – continent convergent plate boundaries.

SL 1

3. Which of the following is **NOT** a continental island?

- A. Fiji
- B. New Zealand
- C. Australia
- D. Papua New Guinea

SL 1

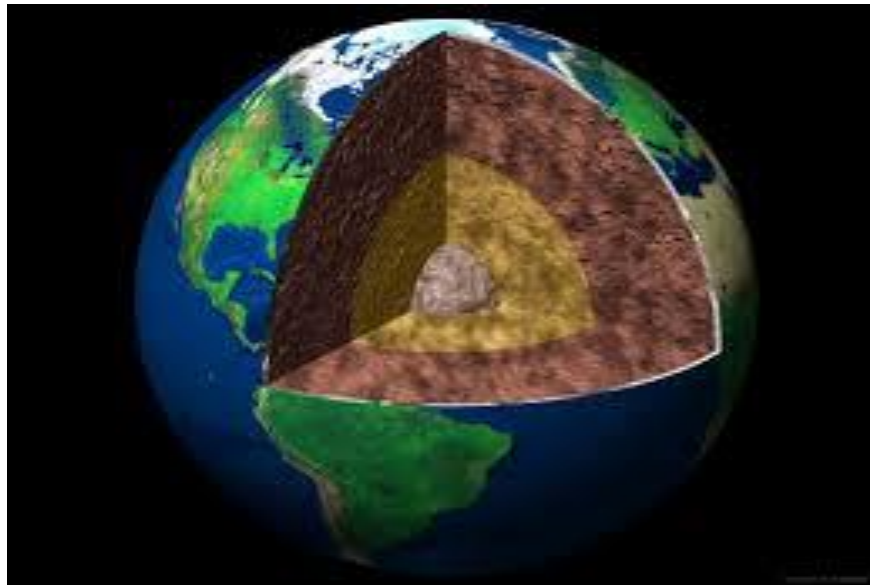
4. Which type of coral reef forms along the shoreline?

- A. Fringing
- B. Barrier
- C. Atoll
- D. Soft coral

SL 1

Use Resource 1 and your knowledge to answer Question 5 below.

**Resource 1:**



Source: <https://document.site/>

5. Which layer of the earth is located above the outer core?

- A. Crust
- B. Mantle
- C. Inner core
- D. Lithosphere

☐

SL 1

Use Resource 2 and your knowledge to answer Question 6 below.

Resource 2:

CULTIVATION METHODS IN LOW ISLANDS



Source: <https://spc.int/>

6. Describe **ONE** traditional method of growing root crops in low islands or atolls.

---

---

---

---

---

---

---

---

SL 2

**Use Resource 3 and your knowledge to answer Question 7 below.**

### **Resource 3:                    HIGH AND LOW ISLANDS FEATURES**



Source: <https://Researchgate.net/>

7. Contrast the processes involved in the formation of high islands and low islands. Use an example to support your answer.

[illegible]

SL 3

Use Resource 4 and your knowledge to answer Question 8 below.

**Resource 4:**

**CLIMATE ISSUES IN THE PACIFIC**



Source: <https://ilo.org/>

8. Explain how climate change challenges would hinder economic development of small islands of the Pacific. Use specific examples.

---

---

---

---

---

---

---

---

---

---

---

---

---

---

---

SL 3



**Use Resource 5 and your knowledge to answer Question 9 below.**

**Resource 5:** **PHOSPHATE MINING IN NAURU**



Source: <https://borgenproject.org/>

9. Explain **ONE** negative impact mining has on the environment of small Pacific islands.

[illegible]

SL 3





For Questions 11 – 15, choose the BEST answer and write the correct letter in the box provided.

11. When a country's population is starting to grow older and live longer, what becomes the main concern?

- A. Pre-natal care.
- B. Gender equality.
- C. Care services for the elderly.
- D. Education.

SL 1

12. The way people are spread out across the world is known as:

- A. population explosion.
- B. population distribution.
- C. demographic transition.
- D. demographic gap.

SL 1

13. Why has there been a gender imbalance in China?

- A. More women are leaving the country than men.
- B. More women choose to live in rural areas.
- C. Increase in the BR of male babies.
- D. Increase in the DR of female babies.

SL 1

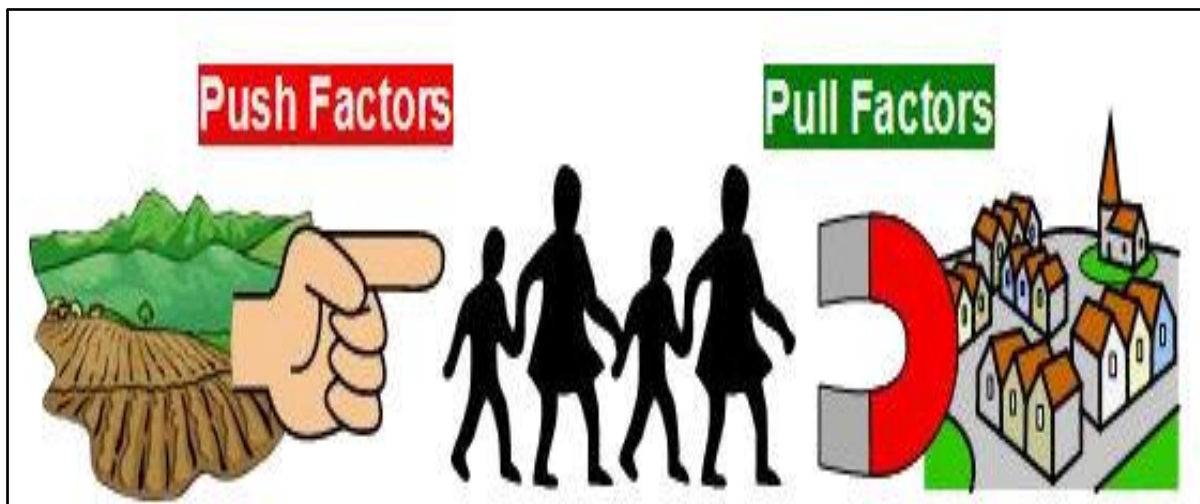
14. A population would have zero population growth if:

- A. births = deaths.
- B. births + emigration = deaths + immigration.
- C. births + immigration > deaths + emigration.
- D. births + immigration < deaths + emigration.

SL 1

Use Resource 6 and your knowledge to answer Question 15 below.

Resource 6



Source: <https://quizizz.com/>

15. Which of the following is **NOT** a pull factor that draws population to the urban areas?

- A. More entertainment facilities.
- B. Access to services.
- C. Lack of employment opportunities.
- D. Better health care.

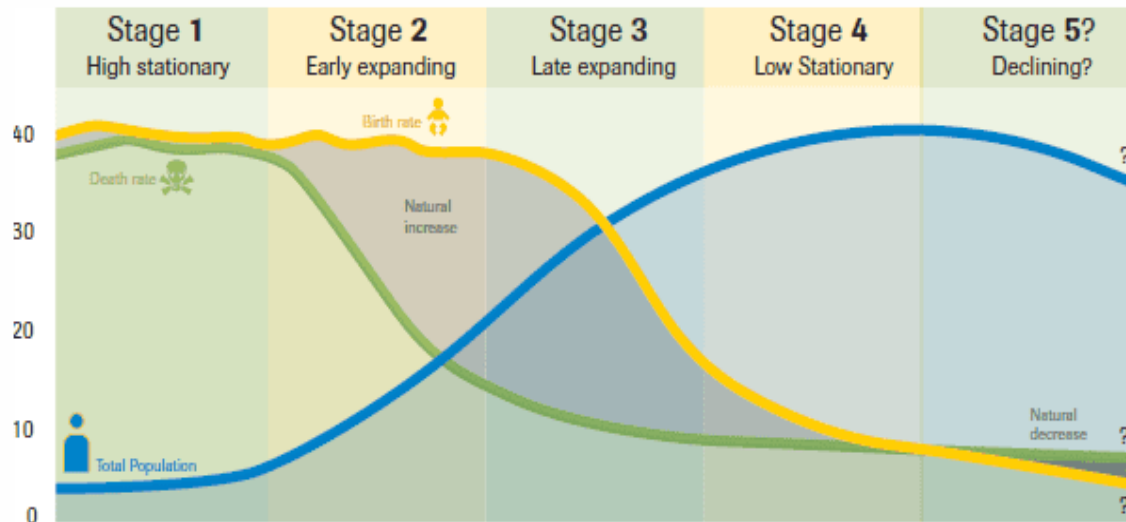
☐

SL 1

Use Resource 7 and your knowledge to answer Questions 16 and 17 below.

Resource 7 :

**DEMOGRAPHIC TRANSITION MODEL**



Source: <https://library.fiveable.me/>

16. List **TWO** main ideas of **Stage 1** of the 'demographic transition model' shown in the resource.

---

---

---

---

---

---

---

---

---

---

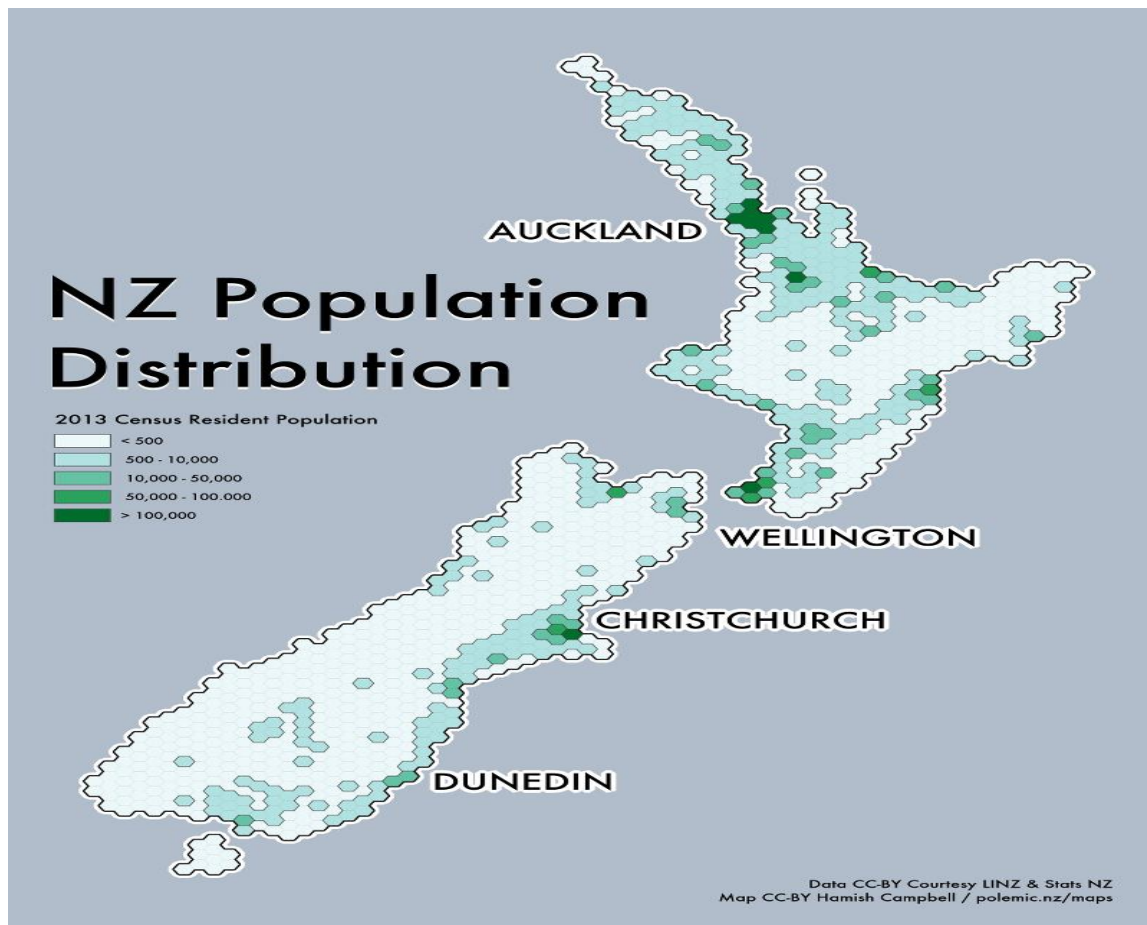
SL 2



Use Resource 8 and your knowledge to answer Questions 18 and 19 below.

**Resource 8:**

**NEW ZEALAND'S POPULATION DISTRIBUTION**



Source: <https://polemic.nz/>

18. Explain **ONE** reason for the heavy concentration of New Zealand's population near the coastal areas.

---

---

---

---

---

---

---

---

---

---

SL 3







For Questions 21 – 25, choose the BEST answer and write the correct letter in the box provided.

21. **GDP** is a measure of development. What does **GDP** stand for?

- A. General Development Practices.
- B. General Domestic Product.
- C. Gross Domestic Product.
- D. Gross Development Practices.

SL 1

22. What **THREE** indicators are used by the **UN Human Development Index**?

- A. Unemployment, literacy and income.
- B. Life expectancy, education and income.
- C. Infant mortality, access to safe water and income.
- D. Literacy rate, education and income.

SL 1

23. Which of the following is an indicator of a more economically developed nation?

- A. High levels of literacy.
- B. High death rate.
- C. Low per capita income.
- D. Low infant mortality.

SL 1

24. A bilateral development project is one whereby:

- A. assistance is given from multilateral agencies to the recipient country.
- B. assistance is given by a government directly to the recipient country.
- C. assistance is given to an agency from another agency.
- D. assistance is given to individuals in a recipient country.

SL 1

Use Resource 9 and your knowledge to answer Question 25 below.

Resource 9



Source: <https://itcsd.org/>

25. A feature of the economies of poor countries is:

- A. booming industry.
- B. high GDP.
- C. high dependence on agriculture.
- D. low unemployment rate.

☐

SL 1

Use Resource 10 and your knowledge to answer Question 26 below.

**Resource 10:**

**DEVELOPMENT INDICATORS**



Source: <https://quizlet.com/>

26. Describe 'quality education' as an indicator of social development.

---

---

---

---

---

---

---

---

SL 2

**Use Resource 11 and your knowledge to answer Questions 27 – 28.**

### **Resource 11:**

## THE FAILURE OF FOREIGN AID



Source: <https://difficultrun.nathanielgivens.com/>

27. Explain **ONE** reason why some foreign aid is not a good type of aid for the recipient country.

This image shows a blank sheet of white paper with horizontal ruling lines. The lines are evenly spaced and run across the width of the page. There are no margins, text, or other markings on the paper.

SL 3

28. Explain **ONE** disadvantage of bilateral aid on recipient countries.

[illegible]

SL 3



**Use Resource 12 and your knowledge to answer Question 29 below.**

**Resource 12:** **PACIFIC CLIMATE CHANGE CENTRE**



Source: <https://climateadaptationplatform.com/>

29. Explain **ONE** way in which Pacific Island countries will benefit from the Pacific Climate Change Centre.

This image shows a single sheet of white paper with horizontal ruling lines. The lines are evenly spaced and run across the width of the page. There are no margins, text, or other markings on the paper.

SL 3



For Questions 31 – 35, choose the BEST answer and write the correct letter in the box provided.

31. A system approach will include:

- A. inputs, outputs, feedback and processes.
- B. inputs, outputs, human resources and feedback.
- C. inputs, outputs, human resources and processes.
- D. inputs, outputs, transportation and feedback.

SL 1

32. Which **ONE** of the following is a renewable resource?

- A. Fossil fuel.
- B. Coal.
- C. Solar.
- D. Natural gas.

SL 1

33. Which of the following internal changes will have an impact on farming in New Zealand?

- A. Global market prices.
- B. Tolerance to pests and diseases.
- C. Increase in the demand from overseas markets.
- D. Closure of borders.

SL 1

34. The extraction of minerals is referred to as:

- A. quarrying.
- B. excavating.
- C. digging.
- D. mining.

SL 1

Use Resource 13 and your knowledge to answer Question 35 below.

**Resource 13:** **SUSTAINABLE FARMING PRACTICE**



Source: <https://fas.scot/>

35. The sustainable farming practice in the resource above is known as:

- A. Intercropping.
- B. Agroforestry.
- C. Rotational grazing.
- D. Inter grazing.

☐

SL 1

Use Resource 14 and your knowledge to answer Questions 36 – 37.

**Resource 14:**

**RENEWABLE AND NON-RENEWABLE RESOURCES**



Source: <https://prescouter.com/>

36. Give **TWO** examples of renewable resources within mining.

---

---

---

---

---

---

---

SL 2

37. Explain the importance of sustainably managing renewable resources in mining.

---

---

---

---

---

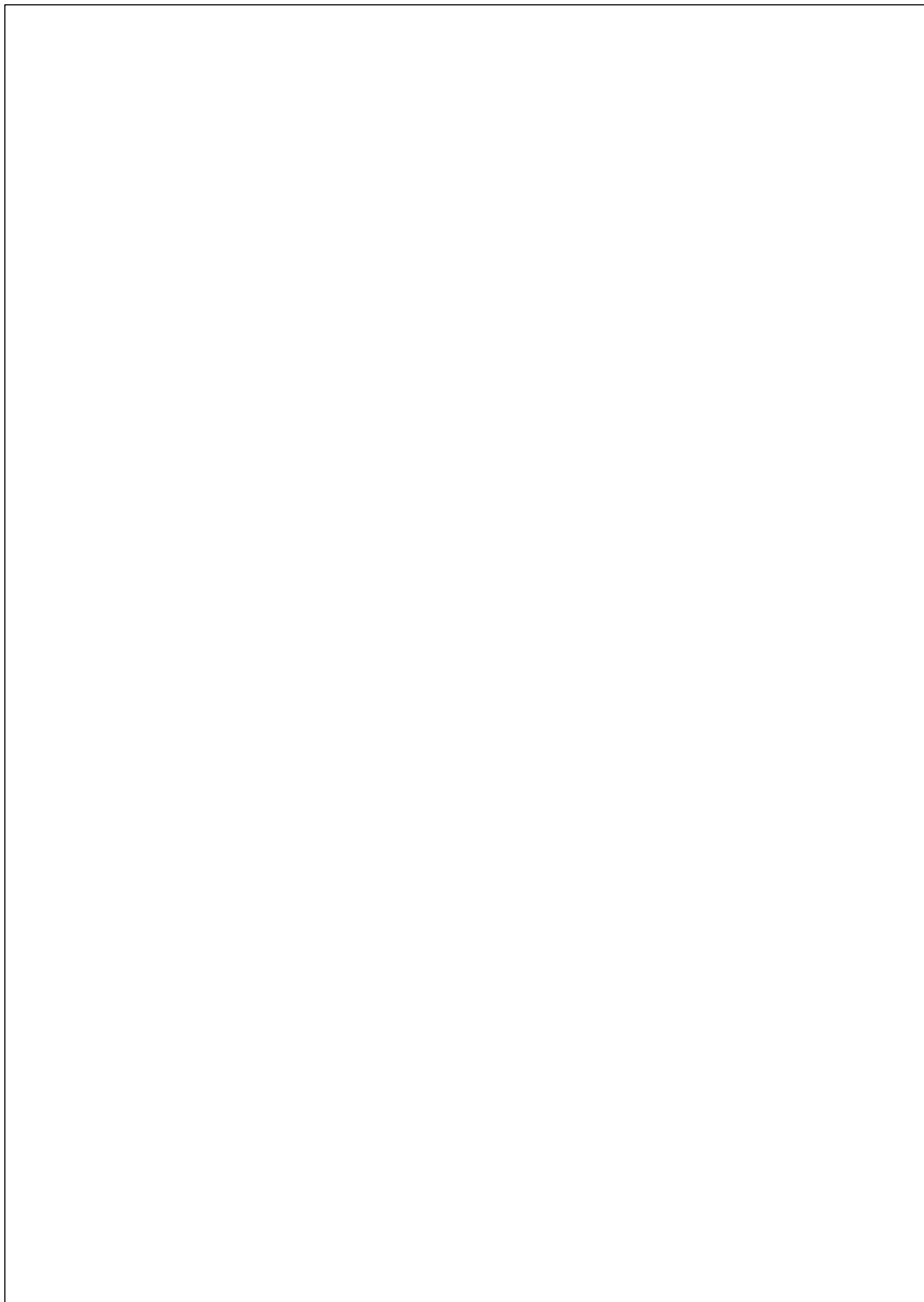
SL 3

38. With reference to Banana Farming in Samoa and Uranium Mining in Australia, differentiate between the two systems using specific examples to support your answer.

SL 3



39. Draw and label a banana farming system.



SL 3



For Questions 41 – 45, choose the BEST answer and write the correct letter in the box provided.

41. A person who advocates or acts for the protection and preservation of the environment and wildlife is a:

- A. Protectionist.
- B. Conservationist.
- C. Preservationist.
- D. Advocacy worker.

SL 1

42. Very high annual rainfall and high average temperatures are climatic characteristics typical of:

- A. Mangrove ecosystems.
- B. Inshore marine areas.
- C. Tundra ecosystems.
- D. Rainforest ecosystems.

SL 1

43. One of the main factors that determine the spread of mangrove plants is:

- A. tidal patterns.
- B. soil type.
- C. marine organisms.
- D. habitat loss.

SL 1

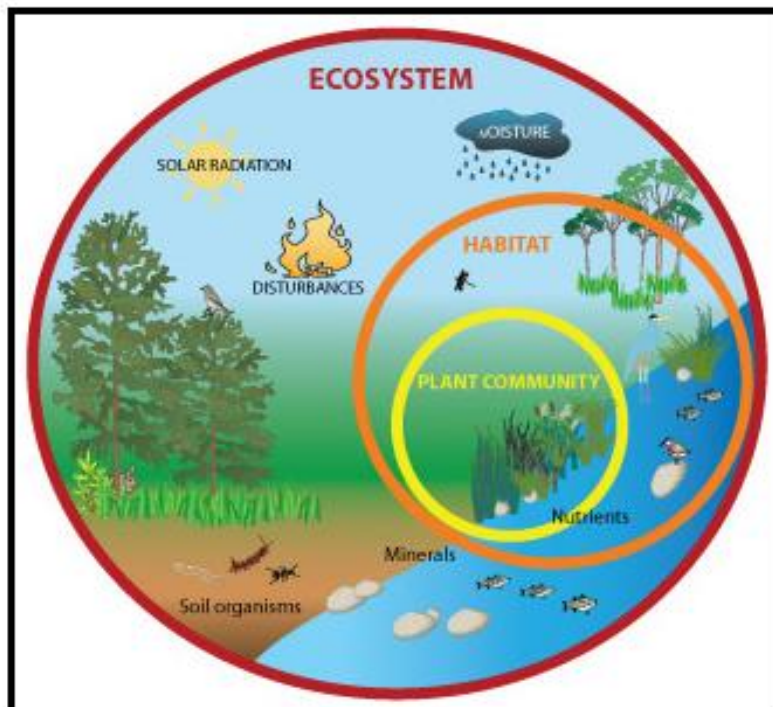
44. Development that meets current needs without compromising the ability of future generations to meet their needs is called:

- A. Social Development.
- B. Economic Development.
- C. Ecological Development.
- D. Sustainable Development.

SL 1

Use Resource 15 and your knowledge to answer Question 45 below.

**Resource 15**



Source: <https://socratic.org/>

45. An ecosystem comprises of:
- A. Living organisms.
  - B. Non-living organisms.
  - C. Plants and living organisms.
  - D. Both living and non-living organisms.

☐

SL 1

Use Resource 16 and your knowledge to answer Questions 46 – 47 below.

**Resource 16:** **RURAL ROAD CONSTRUCTION**



Source: <https://sciencephoto.com/>

46. Describe **ONE** effect of road construction on rainforest ecosystems.

---

---

---

---

---

---

---

---

---

SL 2

47. Explain why rainforests are an important ecological resource for Samoa.

---

---

---

---

---

---

---

---

---

---

---

---

---

---

---

---

---

---

---

---

---

---

---

SL 3



Use Resource 17 and your knowledge to answer Question 48 below.

**Resource 17:**

**ECOSYSTEM SUSTAINABILITY**



Source: <https://samoaobserver.ws/>

48. Explain **ONE** way in which the local community has been engaged to promote the environmental sustainability of the mangrove ecosystem in Samoa. Use specific examples to support your answer.

---

---

---

---

---

---

---

---

---

---

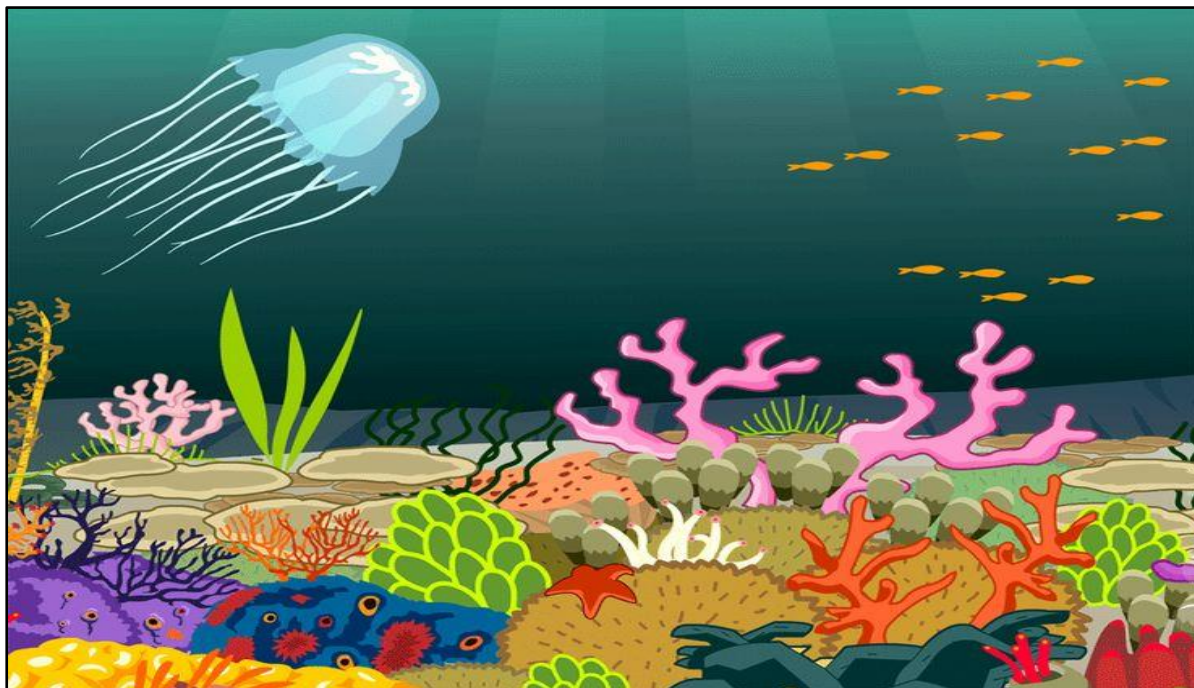
---

---

SL 3

Use Resource 18 and your knowledge to answer Question 49 below.

**Resource 18:** **INSHORE MARINE ECOSYSTEM**



Source: <https://pininterest.com/>

49. Explain the importance of inshore marine ecosystem to the natural environment.

---

---

---

---

---

---

---

---

---

---

---

---

---

---

---

---

---

---

---

---

---

---

---

---

SL 3



STUDENT EDUCATION NUMBER									

## GEOGRAPHY

**2022**

**(For Scorer only)**

STRANDS		Weighting	Scores	Check Scorer	AED Check
STRAND 1:	PHYSICAL ENVIRONMENT	20			
STRAND 2:	POPULATION AND SETTLEMENT	20			
SECTION 3:	DEVELOPMENT STUDIES	20			
SECTION 4:	RESOURCES AND THEIR USES – FARMING AND MINING	20			
SECTION 5:	ENVIRONMENTAL ISSUES	20			
<b>TOTAL</b>		<b>100</b>			