



GOVERNMENT OF SAMOA

STUDENT EDUCATION NUMBER									

# Samoa National Junior Secondary Certificate

# COMPUTER STUDIES

# 2023

## QUESTION and ANSWER BOOKLET

Time allowed: 3 Hours & 10 minutes

### INSTRUCTIONS

1. You have 10 minutes to read **before** you start the exam.
2. Write your **Student Education Number (SEN)** in the space provided on the top right-hand corner of this page.
3. **Answer ALL QUESTIONS.** Write your answers in the spaces provided in this booklet.
4. If you need more space, ask the Supervisor for extra paper. Write your SEN on all extra sheets used and clearly number the questions. Attach the extra sheets to the appropriate places in this booklet.

STRANDS		Pages	Time (min)	Weighting
<b>STRAND 1</b>	PERSONAL COMPUTER SYSTEMS AND MANAGEMENT	2 – 7	72	40
<b>STRAND 2</b>	USING PERSONAL COMPUTER APPLICATIONS	8 – 12	72	40
<b>STRAND 3</b>	FUNDAMENTALS OF COMPUTER PROGRAMMING	13 – 16	36	20
	<b>TOTAL</b>		<b>180</b>	<b>100</b>

Check that this booklet contains pages 2-17 in the correct order.

**HAND THIS BOOKLET TO THE SUPERVISOR AT THE END OF THE EXAMINATION.**

For Questions 1 to 4, choose and write the LETTER of the correct answer in the box provided.

1. The hardware component which interacts with the software using a pointer is known as the:

- A. mouse.
- B. Microsoft Word.
- C. system unit.
- D. screen.

SL 1

2. Which software application is used to watch movies?

- A. Microsoft Excel.
- B. Microsoft PowerPoint.
- C. Microsoft Access.
- D. Media Player.

SL 1

3. All of these are examples of output devices except:

- A. screen.
- B. monitor.
- C. keyboard.
- D. speaker.

SL 1

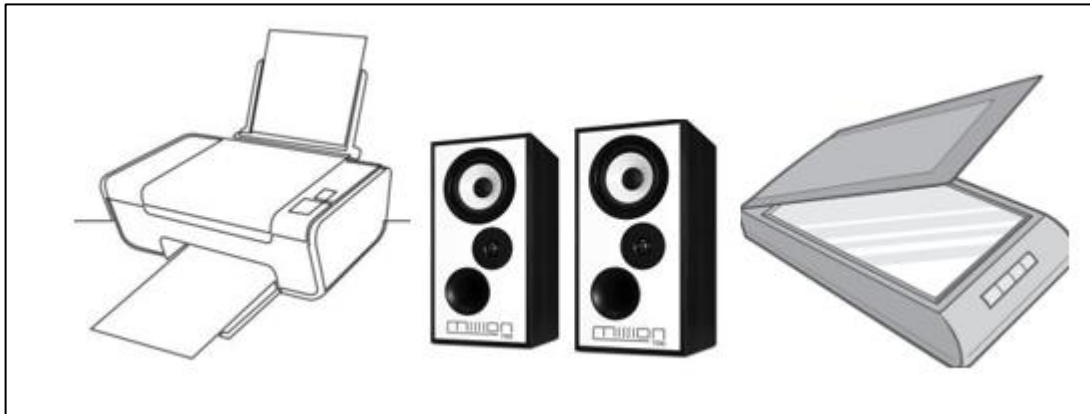
4. All of these are storage devices except:

- A. Flash drive.
- B. MS Access.
- C. CD.
- D. DVD.

SL 1

5. Name **TWO** Hardware components (as shown in Figure 1) that can be connected to a personal computer.

**Figure 1:** Hardware



Component 1	
Component 2	

SL 2

6. Describe the two environmental conditions (as shown in Figure 2) that are required to maintain a computer system.

**Figure 2**




---



---



---



---



---



---

SL 2

7. Describe the disadvantages of using the RAM.

---

---

---

---

SL 2

8. Describe **TWO** disadvantages of disk storage.

---

---

---

---

SL 2

9. Define GUI.

---

---

---

---

SL 2

10. Describe the purpose of using MS Access.

---

---

---

---

SL 2

11. Define folder.

---

---

---

---

SL 2

12. Describe the importance of naming files with descriptive and meaningful names.

---

---

---

---

SL 2

13. Differentiate between cold start/cold boot and warm start/warm boot.

---

---

---

---

---

SL 3

14. Differentiate between a bit and a byte.

---

---

---

---

---

SL 3

15. Explain the differences between hardware and software.

---

---

---

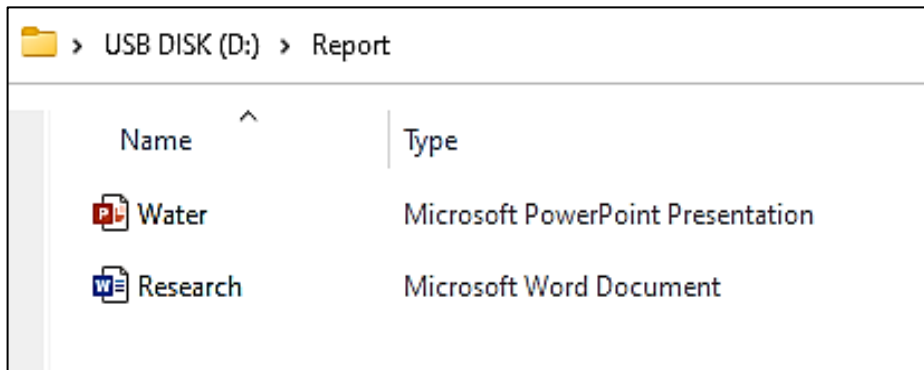
---

---

SL 3

16. Write the pathway for the file Research with the correct extension shown in Figure 3.

**Figure 3**



---

---

---

---

---

---

---

---

SL 3

17. Clearly draw in the box provided the hierarchy as shown in Figure 3 with the correct file extensions for each file.

SL 4

18. Identify the Root directory, Main directory, and applications for each file as shown in **Figure 3**.

Root directory	
Main directory	
Water application	
Research application	

SL 4

For Questions 19 to 22, choose and write the LETTER of the correct answer in the box provided.

19. The two types of paper orientations are:

- A. Print Preview and Normal View.
- B. Landscape and Escape.
- C. Portrait and Landscape.
- D. Bullets and Numbering.

SL 1

20. Sione labelled his file and saved it in his computer as **Results.xlsx**. What is the program used to create this file?

- A. Microsoft Word
- B. Microsoft Access
- C. Microsoft Excel
- D. Microsoft Power Point

SL 1

21. The three types of data stored in MS Excel are:

- A. Absolute, Relative and Mixed.
- B. Alphabetical, numerical and chronological data.
- C. Years, dates and numbers.
- D. Text, formula and number.

SL 1

22. Identify the database objects from the list below.

- A. Flat file and SQL.
- B. Tables and Relationships.
- C. Row, column and cells.
- D. Table and Report.

SL 1

23. Define Word Wrap or Wrap text feature and state how the text is aligned within the document when dealing with tables and images.

---

---

---

SL 2



24. State at least 3 tools used to edit pictures or shapes in MS Word.

---

---

---

---

---

SL 3

25. Apply any of the numbering format to the following texts in the box below.

Names
Tests
Village

SL 3

26. State the alignments applied to the texts as shown in the table below.

A	B	C
Yellow	Green	Blue
Purple	White	Red
Orange	Violet	Grey

Column A	
Column B	
Column C	

SL 3

27. State at least 2 spreadsheet programs.

(i) \_\_\_\_\_

(ii) \_\_\_\_\_

SL 2

28. Explain the error known as **#DIV/0!**

---

---

---

SL 2

29. If the data in Figure 4 is sorted in descending order by cost, what will be the first Item on the list and which column was used for sorting?

**Figure 4**

	A	B	C
1			
2			
3	<b>Item</b>	<b>Quantity</b>	<b>Cost</b>
4	Onion	3	\$ 3.20
5	Flour	8	\$ 4.50
6	Cucumber	1	\$ 10.40

SL 2

Item	
Column	

30. Explain the advantage of using the spreadsheet.

---



---



---



---



---



---

SL 3

31. Write the formula to calculate the Total GST column E7 in Figure 5.

**Figure 5**

	A	B	C	D	E	F
1	<b>Client</b>	<b>Model</b>	<b>Color</b>	<b>Price</b>	<b>GST</b>	<b>Selling Price</b>
2	Toma	S10 plus	black	\$1,900.00	\$ 475.00	\$ 2,375.00
3	Sione	Iphone 11	white	\$2,100.00	\$ 525.00	\$ 2,625.00
4	Ruta	Oppo A57	silver	\$ 955.00	\$ 238.75	\$ 1,193.75
5	Eseta	Samsung	blue	\$ 199.00	\$ 49.75	\$ 248.75
6		tax	0.25			
7			<b>Total</b>	<b>\$5,154.00</b>	<b>\$1,288.50</b>	<b>\$ 6,442.50</b>
8						
9						

--

SL 4

32. Define Flat File database.


SL 2

33. Explain a Query.


SL 3

34. Explain a Report.


SL 3

Use Figure 6 to answer Question 35.

**Figure 6**

ActorID	FirstName	LastName	Gender	Country
AH100007	Anne	Hathaway	F	USA
AP100019	Anna	Paquin	F	Canada
BA100009	Ben	Affleck	M	USA
BB100015	Benjamin	Bratt	M	USA
BF100004	Brendan	Fraser	M	Canada
BR101010	Brat	Pitt	M	Canadian
DC100006	Daniel	Craig	M	England
DJ100002	Dwayne	Johnson	M	USA

35. Create a query that will show **only** the **First Names** of the **Males** from **USA** and in **Ascending order by Last Names**. Fill in the correct criteria in the table (**Table 1**).

**Table 1:**

Field:	ActorID	FirstName	LastName	Gender	Country
Table:	Actor	Actor	Actor	Actor	Actor
Sort:	<input type="checkbox"/>	<input type="checkbox"/>	<input type="checkbox"/>	<input type="checkbox"/>	<input type="checkbox"/>
Show:					
Criteria:					

SL 4

For Questions 36 and 37, choose and write the LETTER of the correct answer in the box provided.

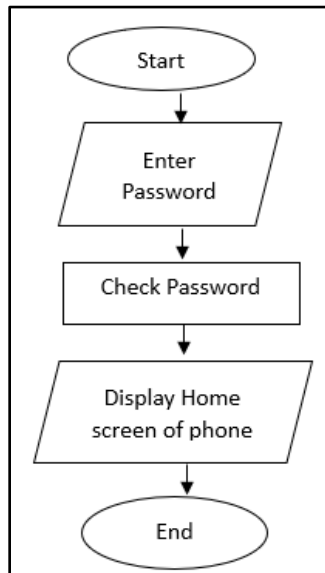
36. An example of a Computer Programming Language is:

- A. Java.
- B. Tablet.
- C. Personal Computer.
- D. Short Text.

SL 1

37. Name the task shown in Figure 7 Flow Chart:

**Figure 7**



- A. Log in to a computer.
- B. Unlock a phone.
- C. Making a cup of coffee.
- D. Adding two numbers.

SL 1

38. Organize these steps in the correct order for the given task.

End, add 2 and 3, display sum, enter 2 and 3, Start

1.	
2.	
3.	
4.	
5.	

SL 2

39. Define algorithms.

---

---

---

---

SL 2

40. Explain the role of a Computer Programmer.

---

---

---

---

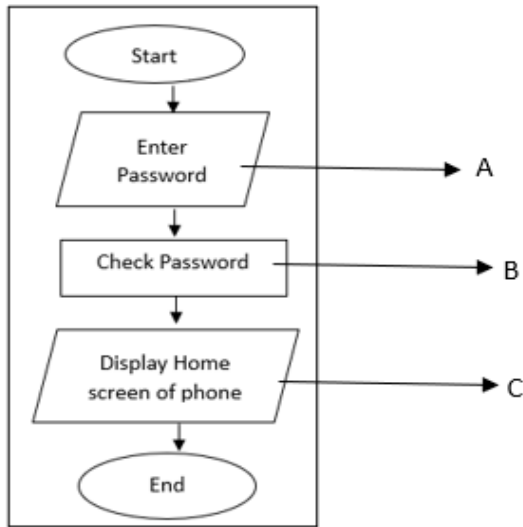
---

---

SL 3

41. Explain and identify the different stages (shapes) of the flow chart labelled A, B, C (Figure 8)

**Figure 8**



<b>A</b>	
<b>B</b>	
<b>C</b>	

<b>SL 3</b>

42. Given the problem  $3 \times 15 = 45$ . Explain the steps on how the user would go about in solving this in terms of input, process and output.

---



---



---



---



---



---



---



---



---



---

<b>SL 4</b>

---


---

---

---

---

43. Draw the flowchart for the given task in Question 42.



SL 4



STUDENT EDUCATION NUMBER									

## SNJSC COMPUTER STUDIES

2023

*(For Scorers only)*

STRANDS		Weighting	Scores	Check Scorer	AED Check
<b>STRAND 1</b>	PERSONAL COMPUTER SYSTEMS AND MANAGEMENT	40			
<b>STRAND 2</b>	USING PERSONAL COMPUTER APPLICATIONS	40			
<b>STRAND 3</b>	FUNDAMENTALS OF COMPUTER PROGRAMMING	20			
<b>TOTAL</b>		<b>100</b>			