



GOVERNMENT OF SAMOA

STUDENT EDUCATION NUMBER									

---

# Samoa School Certificate

---

# MUSIC

# 2023

## QUESTION and ANSWER BOOKLET

Time allowed: 3 Hours & 10 minutes

### INSTRUCTIONS

1. You have 10 minutes to read **before** you start the exam.
2. Write your **Student Education Number (SEN)** in the space provided on the top right-hand corner of this page.
3. **Answer ALL QUESTIONS.** Write your answers in the spaces provided in this booklet.
4. If you need more paper to write your answers, ask the Supervisor for extra paper. Write your SEN on all extra sheets used and clearly number the questions. Attach the extra sheets to the appropriate places in this booklet.

STRANDS		Pages	Time (min)	Weighting
STRAND 1	GENERAL KNOWLEDGE	2-6	70	40
STRAND 2	COMPOSITION	7-11	70	40
STRAND 3	HISTORY	12-15	40	20
	<b>TOTAL</b>		<b>180</b>	<b>100</b>

Check that this booklet contains pages 2-16 in the correct order and none of these pages are blank.

**HAND THIS BOOKLET TO THE SUPERVISOR AT THE END OF THE EXAMINATION.**

Study the Excerpts provided to answer Questions 1 to 4.

**Excerpt 1**

Bourree  
By J.S. Bach



1. State if *Bourrée* given above is in **Binary** or **Ternary** form.

\_\_\_\_\_

SL 1

**Excerpt 2**

W.A.Mozart - Rondo in C-Major  
Köchel Verzeichnis Nummer 15 (KV 15a)



2. State if *Rondo* in C Major, given above, is either in **Binary** or **Ternary** form.

\_\_\_\_\_

SL 1

**Excerpt 3**

**MINUET IN G Major**

By J.S. Bach - BWV Anh. 116

3. State if *Minuet* in G Major, given above is either in **Binary** or **Ternary** form.

SL 1

**Excerpt 4**

**Piano Sonata in D major**

4. State if *Piano Sonata* in D Major, given above is either in **Binary** or **Ternary** form.

SL 1

Questions 5 to 10 are based on the C sharp minor scale. Add the Key signature and the note that is required to answer the given intervals.

5. Perfect 4<sup>th</sup>



SL 2

6. Major 2<sup>nd</sup>



SL 2

7. Minor 6<sup>th</sup>



SL 2

8. Minor 3<sup>rd</sup>



SL 2

9. Minor 7<sup>th</sup>



SL 2

10. Perfect 5<sup>th</sup>



SL 2

11. Explain how a **diminished seventh chord** is resolved.  
Support your answer with **ONE** example.

\_\_\_\_\_

\_\_\_\_\_

\_\_\_\_\_

\_\_\_\_\_

\_\_\_\_\_

\_\_\_\_\_

\_\_\_\_\_

\_\_\_\_\_

\_\_\_\_\_

\_\_\_\_\_

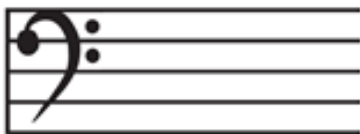
SL 3

12. Write an **F Diminished 7<sup>th</sup>** chord.




SL 3

13. Write a **D Diminished 7<sup>th</sup>** chord.



SL 3

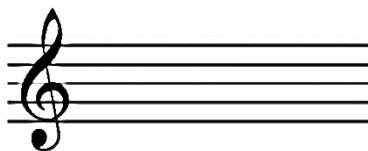
14. Differentiate between *diminished* and **augmented** intervals.



SL 3

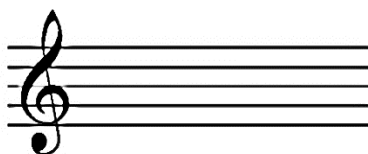
Write the following Chords in ascending order on the staff provided.

15. G# Dim 7<sup>th</sup> Chord



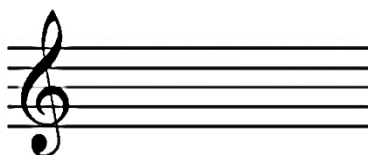
SL 4

16. A Dim 7<sup>th</sup> Chord



SL 4

17. E Dim 7<sup>th</sup> Chord



SL 4

18. Define the Italian term 'Ritardando.'

---

---

SL 1

19. Give the name of the **accent** marking given below.



---

SL 1

20. Name the Major **key signature** given below.



---

SL 1

21. Give the **time signature** of the given phrase.



---

SL 1

22. State the sign given in the diagram below.



---

SL 1

23. Compose a harmony for the song 'Amazing Grace' in the Bass Staff provided below.

SL 2

24. Draw the C minor 7<sup>th</sup> Chord in Root Position.

SL 2

25. Describe a **Perfect Cadence** with reference to the progression of chords shown in the excerpt below.

**Allegretto con variazioni**

A major: I<sup>6</sup>    I    ii    V    I    V<sup>6</sup>    I    V

---



---



---



---



---



---

SL 2



26. Write the key signature for G# Minor in the staff provided below.



SL 2

27. Write the correct note names for the E minor scale (treble clef) below.



SL 2

28. The trumpet is an instrument that belongs to the Brass Family.



Explain **ONE** benefit of learning and playing the trumpet.

---

---

---

---

---

---

---

---

---

---

SL 3

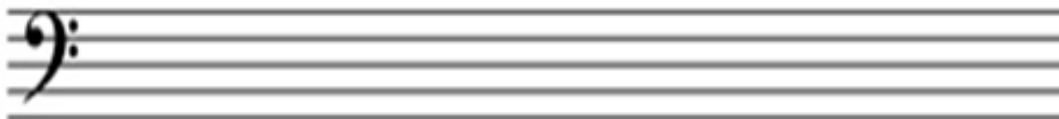
Draw an ascending scale each for Questions 29 and 30 using semibreves with respective key signatures. Mark accidentals where appropriate.

29. F# Harmonic Minor Scale



SL 3

30. C# Melodic Minor Scale



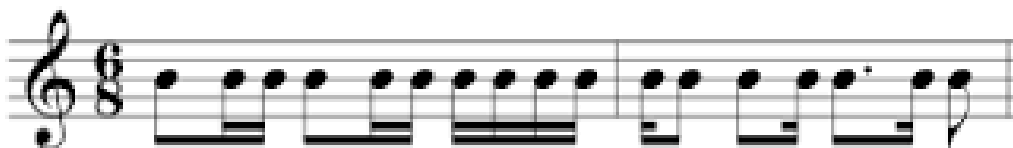
SL 3

31. Circle the **passing tones** in the Jazzy melody provided below.



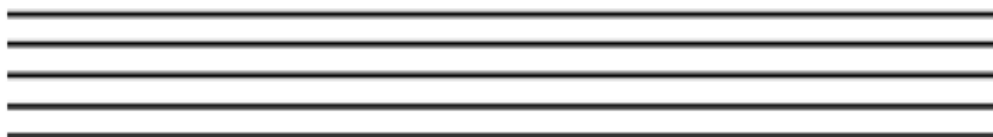
SL 4

32. An incorrect rhythmic notation is given below.

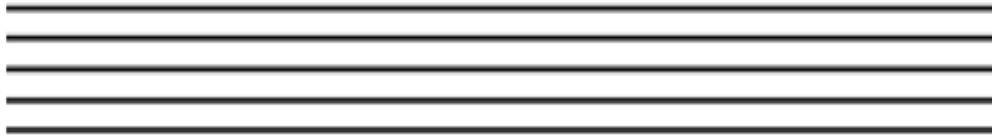


SL 4

Write the correct rhythmic notation in the given staff provided.



33. Transpose the passage given below **down an octave** into the Bass staff that is provided.



SL 4

34. Examine the following rhythm given below and rewrite it in  $\frac{3}{4}$  **simple time**.



SL 4

Read each question carefully and write your answer in the spaces provided.

35. Explain why **'The Banner of Freedom'** song is important to Samoa.

---

---

---

---

SL 1

36. *Opetaiia Foa'i* just recently had a successful concert where his tickets were all sold out. The organizers of the concert said that his performance on the night was successful.

Describe a successful musical performance.

---

---

---

---

---

---

---

---

SL 2

37. List **TWO** features of Country Music.

---

---

---

---

---

---

SL 2

38. Describe the **importance of Percussion** instruments in Samoa.

---

---

---

---

---

---

---

---

---

---

SL 2

39. Learning Music is important because it is able to link us to our cultures and how we identify ourselves through traditional songs and dance.



List **TWO** other reasons why learning music is important.

---

---

---

---

---

---

---

---

---

---

SL 2





STUDENT EDUCATION NUMBER									

## SSC MUSIC

2023

(For Scorer only)

STRANDS		Weighting	Scores	Check Scorer	AED check
<b>STRAND 1</b>	GENERAL KNOWLEDGE	40			
<b>STRAND 2</b>	COMPOSITION	40			
<b>STRAND 3</b>	HISTORY	20			
<b>TOTAL</b>		<b>100</b>			