



GOVERNMENT OF SAMOA

STUDENT EDUCATION NUMBER

--	--	--	--	--	--	--	--	--	--

Samoa National Junior Secondary Certificate

COMPUTER STUDIES

2024

QUESTION and ANSWER BOOKLET

Time allowed: 3 Hours & 10 minutes

INSTRUCTIONS

1. You have 10 minutes to read **before** you start the exam.
2. Write your **Student Education Number (SEN)** in the space provided on the top right-hand corner of this page.
3. **Answer ALL QUESTIONS.** Write your answers in the spaces provided in this booklet.
4. If you need more space, ask the Supervisor for extra paper. Write your SEN on all extra sheets used and clearly number the questions. Attach the extra sheets to the appropriate places in this booklet.

STRANDS		Pages	Time (min)	Weighting
STRAND 1	PERSONAL COMPUTER SYSTEMS AND MANAGEMENT	2-8	72	40
STRAND 2	USING PERSONAL COMPUTER APPLICATIONS	9-13	72	40
STRAND 3	FUNDAMENTALS OF COMPUTER PROGRAMMING	14-16	36	20
	TOTAL		180	100

Check that this booklet contains pages 2-17 in the correct order.

HAND THIS BOOKLET TO THE SUPERVISOR AT THE END OF THE EXAMINATION.

For Questions 1 to 4, choose and write the LETTER of the correct answer in the box provided.

1. Which of the following is a device that can be connected to a computer?

- A. Speaker.
- B. Microsoft Excel.
- C. Send emails.
- D. Microsoft PowerPoint.

SL 1

2. Which is an example of a computer task for Microsoft PowerPoint?

- A. Balance sheets using formula and data.
- B. Create Presentations.
- C. Watch movies.
- D. Type documents.

SL 1

3. An example of an output device is:

- A. keyboard.
- B. printer.
- C. scanner.
- D. microphone.

SL 1

4. An example of storage device that stores data permanently is known as:

- A. Random Access Memory.
- B. Flashdrive.
- C. Compact Disk.
- D. Read Only Memory.

SL 1

5. Categorize the components in the following list into Input, Output, Storage or Processing devices in the table below.

Speaker, CPU, flash drive, Keyboard

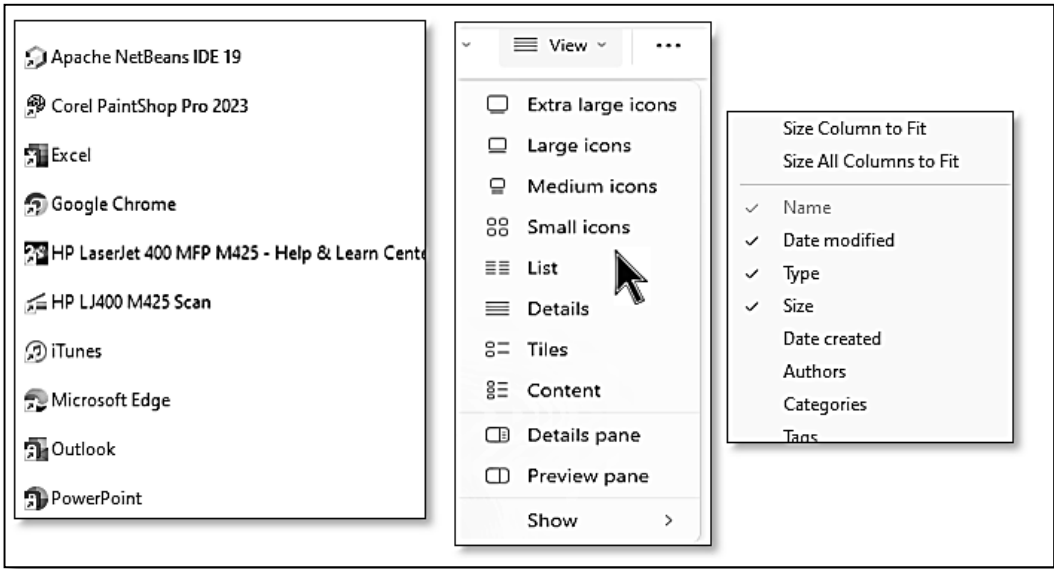
Input Device		SL 2
Output Device		
Storage Device		
Processing Device		

6. Define **Primary Memory**.

SL 2

7. Describe the basic elements of GUI with the help of the images in Figure 1 below.

Figure 1



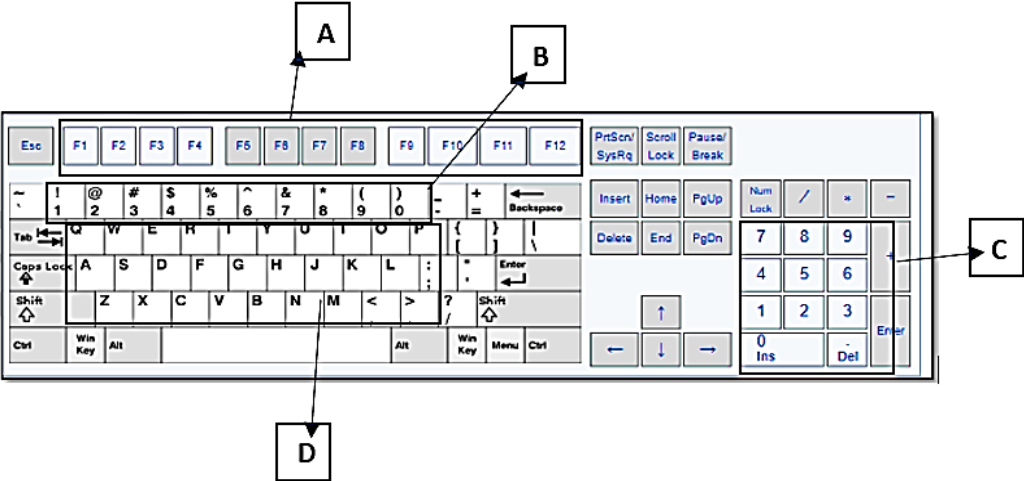
SL 2

8. Define a file.

SL 2

9. Label the keys on the QWERTY Keyboard as marked in Figure 2 below.

Figure 2

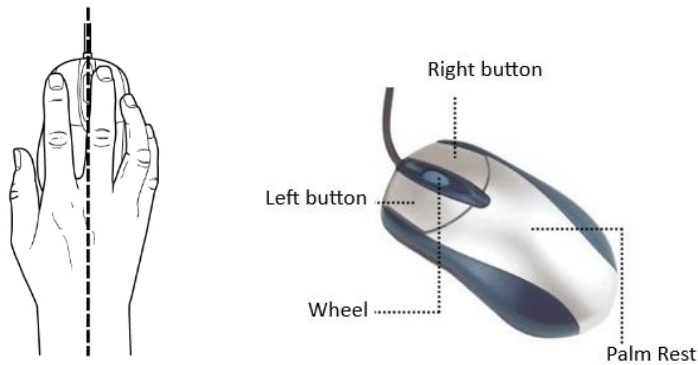


A.	
B.	
C.	
D.	

SL 2

10. Explain what happens when each button of the mouse is used in Figure 3.

Figure 3



Right click	
Left click	
Scroll	

SL 3

11. Discuss **1 positive** and **1 negative** impact of computers in society.

SL 2

12. Discuss the **TWO** ethical issues as mentioned below.

Tom asked Sina if he could use her photo on a post on his Facebook account.
Siaki uploaded a video he watched on Facebook without getting permission of the owner of the video.

SL 2

13. Describe the purpose of using MS Excel.

SL 2

14. Explain how to maintain the environment conditions required by the computer lab with reference to Figure 4 below.

Figure 4



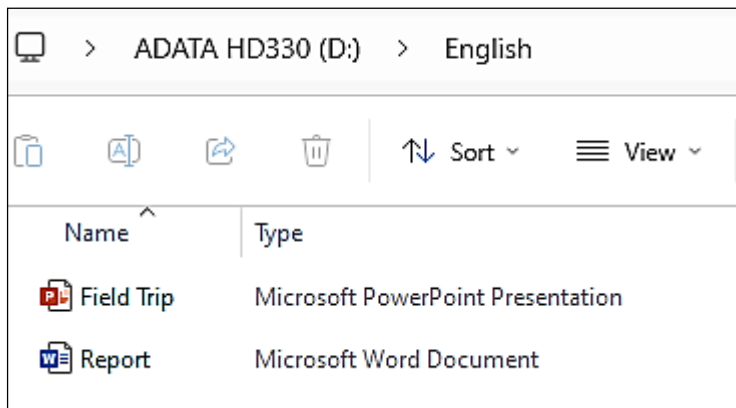
SL 3

15. Explain the differences between RAM and ROM.

SL 3

Use Figure 5 to answer Questions 16 to 18.

Figure 5



16. Write the pathway for the file Field Trip with the correct extension.

SL 3

17. Draw the hierarchy in the box provided with the correct file extensions for each file.

SL 4

18. Identify the Root directory, Main directory, and applications for each file as shown in **Figure 5**.

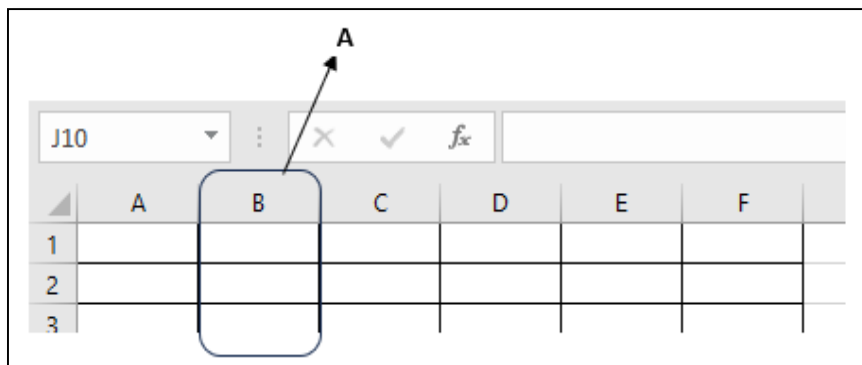
Root directory	
Main directory	
Water application	
Research application	

SL 4

For Questions 19 to 22, choose and write the LETTER of the correct answer in the box provided.

19. Name the feature labelled **A** in the spreadsheet as shown in Figure 6.

Figure 6



- A. Column
B. Row
C. Cell
D. Name box

SL 1

20. If the number is too big for a cell, what type of error would appear?

- A. Error!
B. #DIV/0!
C. #####
D. #NAME?

SL 1

21. Which is an example of a database program?

- A. Media Player.
B. Microsoft Access.
C. Microsoft Excel.
D. Windows.

SL 1

22. Identify the correct data type for \$23.00 in the spreadsheet as shown in Figure 7 below.

Figure 7

	A	B
1	item ▼	cost ▼
2	shirt	\$ 23.00
3	hat	\$ 10.50

- A. Auto Number
B. Text
C. Date/Time
D. Currency

☐

SL 1

23. Define **World Processor**.

SL 2

24. Define **increase and decrease indent in MS Word**.

Increase Indent	
Decrease Indent	

SL 2

25. Name the **FOUR** text alignments in Microsoft Word.

SL 2

26. Explain the advantages of using Word Processing.

SL 3

27. Apply a bullet format to the following texts in the box below.

<p>Yellow Green Blue</p>

SL 3

28. Write the word **Samoa** in the correct alignment as shown for each column.

Right alignment	Left alignment	Centre

SL 3

29. **Explain** the features **Row**, **Cell** and **Name box** of a spreadsheet in the table below.

Row	
Cell	
Name box	

SL 3

30. Write the formula to calculate the most expensive car or the highest value in D6.

Figure 8

	A	B	C	D	
1	Car	Price	Discount	Selling Price	
2	Toyota	\$50,200.00	\$ 300.00	\$ 49,900.00	
3	Getz	\$15,099.00	\$ 599.00	\$ 14,500.00	
4	Hyundai	\$22,800.00	\$ 299.00	\$ 22,501.00	
5					
6			Most Expensive	\$ 49,900.00	
7			Cheapest	\$ 14,500.00	

SL 4

31. Define **Flat File database**.

SL 2

32. Define **relationship database**.

SL 2

33. Explain a Primary key for a table in a database.

SL 3

34. Explain a Query in a database.

SL 3

35. Create a query that will show **only** the **Passport Number**, show **Gender** of only the females from **Samoa** and show their Birthdates in Descending order according to Figure 9. Fill in the correct criteria in the table provided. (**Table 1**).

Figure 9

Passport Number	First Name	Last Name	Gender	Country	Birthdate
T109110	Sarai	Toma	female	Samoa	12/12/1990
SF56411	Harry	Jamieson	male	Fiji	3/7/2002
ER334322	Allan	Smith	male	Tonga	11/4/2018

SL 4

Table 1:

Field:	Passport Number	First Name	Last Name	Gender	Country	Birthdate
Table:	Customer	Customer	Customer	Customer	Customer	Customer
Sort:						
Show:	<input type="checkbox"/>	<input type="checkbox"/>	<input type="checkbox"/>	<input type="checkbox"/>	<input type="checkbox"/>	<input type="checkbox"/>
Criteria:						

For Questions 36 and 37, choose and write the LETTER of the correct answer in the box provided.

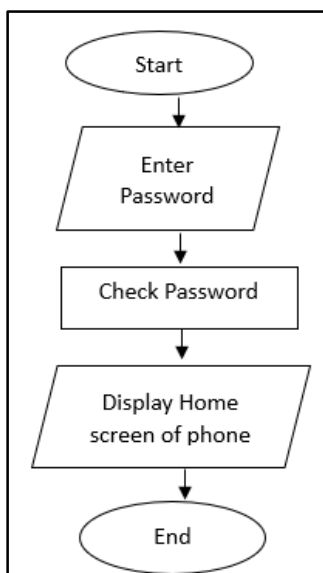
36. An example of a Computer Programming Language is:

- A. Hard disk.
- B. Python.
- C. Printer.
- D. Samsung.

SL 1

37. Name the task as shown in Figure 10 Flow Chart.

Figure 10



- A. Log in to a computer.
- B. Unlock a phone.
- C. Making a cup of coffee.
- D. Adding two numbers.

SL 1

38. Define **algorithms**.

SL 2

39. Define **Computer Programming**.

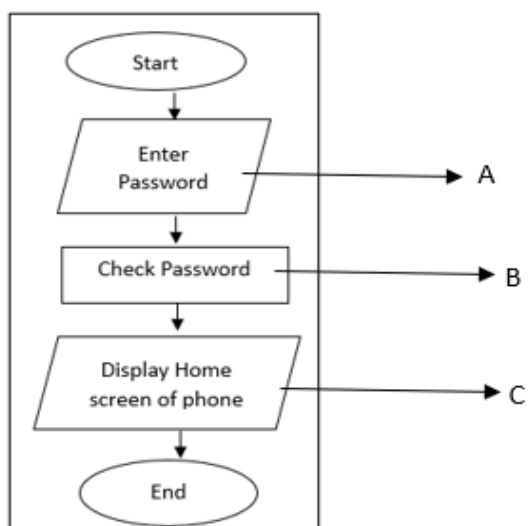
SL 2

40. Explain the role of a Computer Programmer.

SL 3

41. Explain and identify the different stages (shapes) of the flow chart labelled A, B, C (Figure 11)

Figure 11



A	
B	
C	

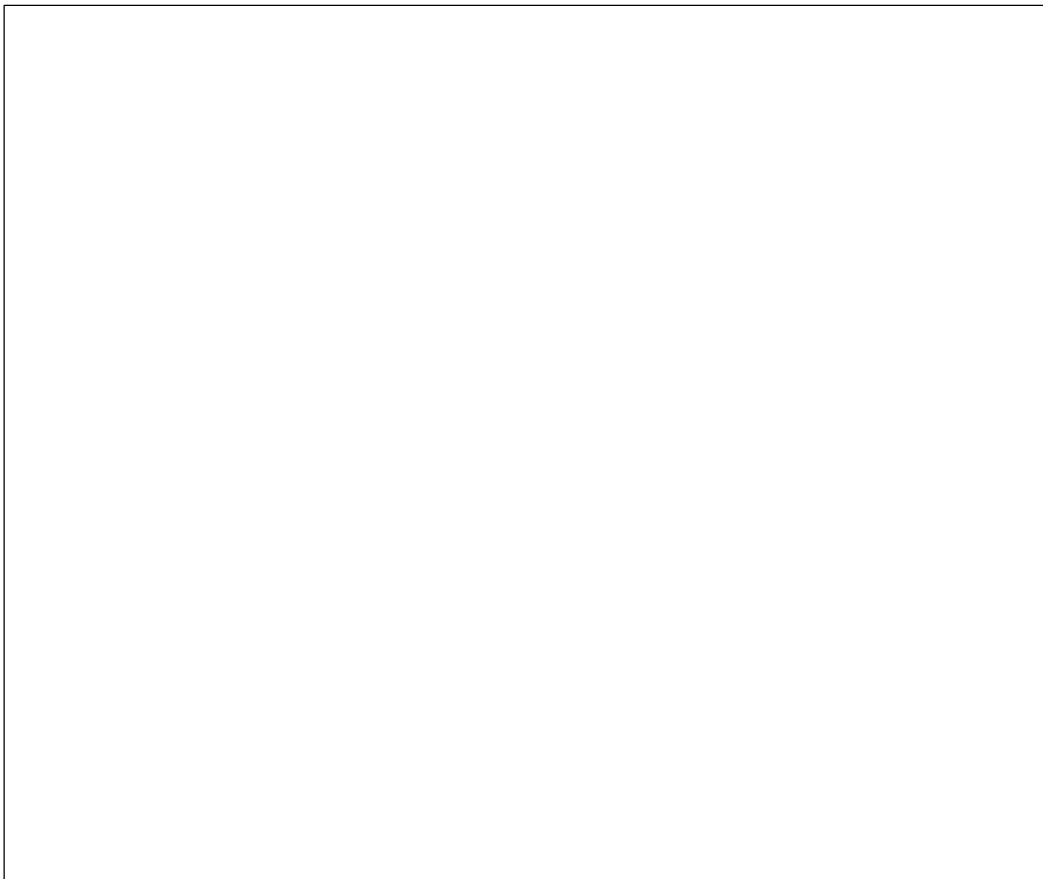
SL 3

42. Given the problem $15 - 5 = 10$. Explain the steps on how the user would go about in solving this in terms of input, process and output.

Input	
Process	
Output	

SL 4

43. Draw the flowchart for the given task in Question 42.



SL 4

STUDENT EDUCATION NUMBER									

SNJSC COMPUTER STUDIES

2024

(For Scorers only)

STRANDS		Weighting	Scores	Check Scorer	AED Check
STRAND 1	PERSONAL COMPUTER SYSTEMS AND MANAGEMENT	40			
STRAND 2	USING PERSONAL COMPUTER APPLICATIONS	40			
STRAND 3	FUNDAMENTALS OF COMPUTER PROGRAMMING	20			
TOTAL		100			