



GOVERNMENT OF SAMOA

STUDENT EDUCATION NUMBER

--	--	--	--	--	--	--	--	--	--

# Samoa National Junior Secondary Certificate

## MUSIC

# 2024

### QUESTION and ANSWER BOOKLET

Time allowed: 3 Hours & 10 minutes

#### INSTRUCTIONS

1. You have 10 minutes to read **before** you start the exam.
2. Write your **Student Education Number (SEN)** in the space provided on the top right-hand corner of this page.
3. **Answer ALL QUESTIONS.** Write your answers in the spaces provided in this booklet.
4. If you need more paper to write your answers, ask the Supervisor for extra paper. Write your SEN on all extra sheets used and clearly number the questions. Attach the extra sheets to the appropriate places in this booklet.

STRANDS		Pages	Time (min)	Weighting
STRAND 1	MUSIC APPRECIATION	2-9	70	50
STRAND 2	MUSIC PERFORMANCE	10-14	70	26
STRAND 3	MUSIC HISTORY	15-18	40	24
	TOTAL		180	100

Check that this booklet contains pages 2-19 in the correct order and that none of these pages are blank.

**HAND THIS BOOKLET TO THE SUPERVISOR AT THE END OF THE EXAMINATION.**

For Questions 1 to 10 and 13, choose and write the LETTER of the correct answer in the box provided.

1. How many beats are there in a 3/4 time signature?

- A. 1
- B. 2
- C. 3
- D. 4

SL 1

2. A triple  is equal to a:

- A. Minim.
- B. Quaver.
- C. Crotchet.
- D. Semibreve.

SL 1

3. What is the name of a curved line that joins notes of the same pitch?

- A. 6
- B. 4
- C. 9
- D. 12



SL 1

4. A shift in music to a higher or lower pitch from the original is known as:

- A. Scale.
- B. Melody.
- C. Transposing.
- D. Harmonizing.

SL 1

5. State the purpose of the **top number** in a time-signature.

- A. It tells us how fast or slow you should play your music.
- B. It tells us how many beats should be in each measure.
- C. It tells us how loud you should play your music.
- D. It tells us what note receives the beat.

☐

SL 1

6. The term used to describe the degree of volume, stylistic interpretation or functional execution in music is:

- A. dynamites.
- B. dynantics.
- C. dynamics.
- D. dynomics.

☐

SL 1

7. When “**a tempo**” is indicated on the music page, the performer:

- A. speeds up a tempo.
- B. determines the tempo.
- C. ignores the given tempo.
- D. returns to the original tempo.

☐

SL 1

8. What is the name of the stringed instrument shown in the diagram below?



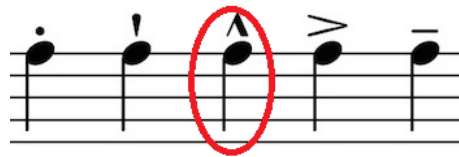
Source: <https://codepen.io/Z0mbie/pen/qZxgKy>

- A. Harp
- B. Cello
- C. Violin
- D. Double bass

☐

SL 1

9. Identify the sign circled below:



- A. Accent
- B. Staccato
- C. Tenuto
- D. Macato

☐

SL 1

10. What is an interval?

- A. It is a minor chord.
- B. It is a scale of 8 notes.
- C. It is a difference in pitch between two sounds.
- D. It is the difference between major and minor chords.

☐

SL 1

11. Name the instrument in the given illustration.



\_\_\_\_\_

SL 1

12. Name any **ONE** of the Bass instruments given below.



\_\_\_\_\_

SL 1

13. Melodies are a part of music above the:

- A. sharps and flats.
- B. chords and rhythm.
- C. sequence of events.
- D. instruments and vocals.

☐

SL 1

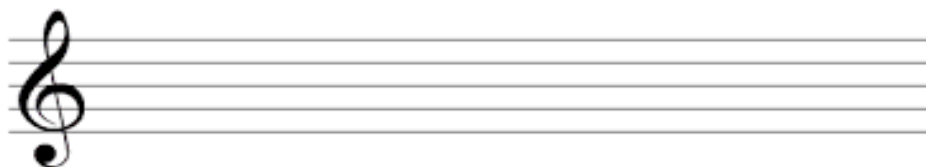
Write the scale required using the appropriate key signatures and semibreve notes for Questions 14 to 16 in ascending order.

14. Write the scale of **G Major**.



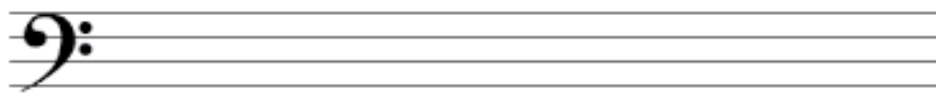
SL 2

15. Write the scale of **E flat Major**.



SL 2

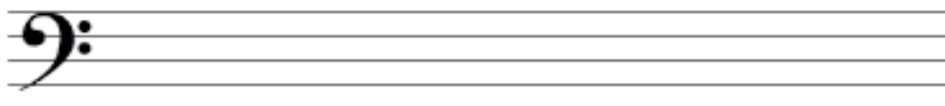
16. Write the scale of **A minor**.



SL 2

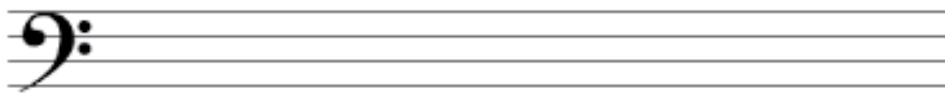
Write the scale required and use appropriate accidentals and semibreve notes for Questions 17 to 19 in descending order.

17. Write the scale of **D Major**.



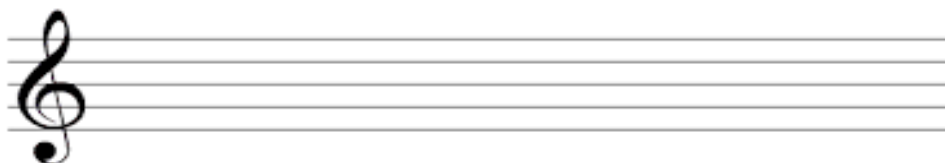
SL 2

18. Write the scale of **C# Major**.



SL 2

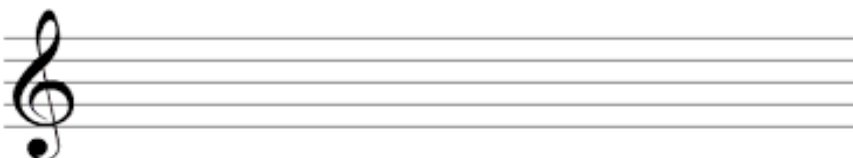
19. Write the scale of **E Minor**.



SL 2

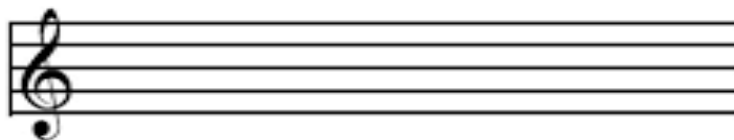
20. **Transpose** the following music piece up 1 tone.

Original - G Major



SL 2

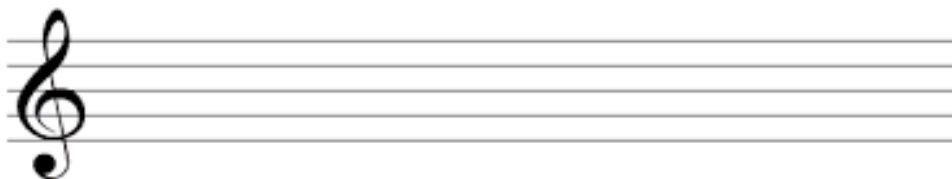
21. Write two raised **Tonal Sequences** up M3 for the given excerpt.



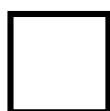
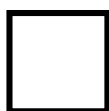
SL 2

22. Write the **C major scale chords** on the staff below.

Classify three primary chords using the C major scale and use semibreves to show the chord of the notes on the staff.

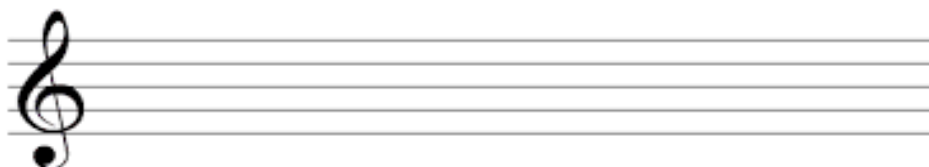


SL 3

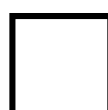
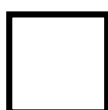
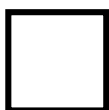


23. Write the **F major scale chords** on the staff below.

Classify three primary chords using the F major scale and use semibreves to show the chord of the notes on the staff.



SL 3



24. Sketch 3 ties in the extract given below.



SL 3

Study the musical piece given below and answer the Question that follows.

25. A musical piece for a famous Christmas song '**Jingle Bells**' is provided below.

Circle the following triads in root positions in the given extract. Label your work.

- 2 Tonic triads
- 1 Subdominant triad
- 1 Dominant triad

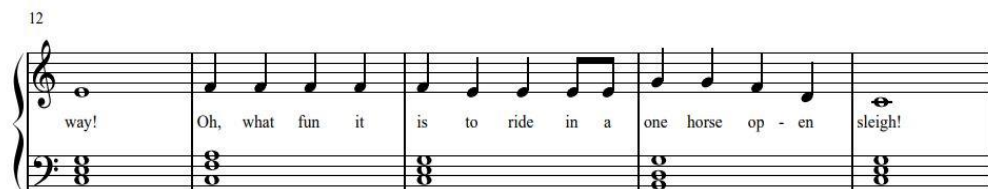
### Jingle Bells

PianoTels.com

Traditional



SL 4





26. **Rewrite** the correct grouping of notes of the extract in the staff provided below.

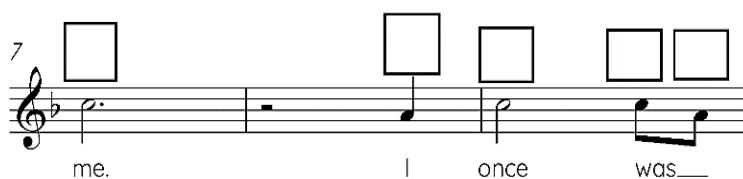


SL 4



27. An extract from the song Amazing Grace is given below.

### Amazing Grace



Analyze the extract above and provide the letter-names for each musical note. Put your answers beside the musical notes in the spaces given below.



\_\_\_\_\_



\_\_\_\_\_



\_\_\_\_\_



\_\_\_\_\_

SL 4

Singing is not about having a good voice but having crisp diction and intonation.

28. Define **intonation**.

---

---

---

SL 1

29. List two elements of **music interpretation**.

---

---

---

SL 2

30. Describe one **dynamic markings** in the extract given below.



SL 2

---

---

---

---

31. Explain one reason why musicians use **dynamics**.

---

---

---

---

---

---

SL 3

Study the musical piece below to answer Questions 32 and 33.

**Minuet No. 1**  
"Tranquillo" Israel Huitrón

**Moderato**

32. Explain what happens after Bar 9.

---

---

---

---

---

---

---

---

SL 3

33. Explain the difference between **Tranquillo** and **piano**.

---

---

---

---

---

---

---

---

SL 3

34. Transpose the following extract **down a major 2<sup>nd</sup>**.



SL 4

35. Transpose the following extract a **minor 3<sup>rd</sup> up**.



SL 4

36. The music extract, *Yellow Submarine*, whose words and music were written by the Beatles members, John Lennon and Paul McCartney, is given below.

## Yellow Submarine

Words & Music by John Lennon & Paul McCartney

March tempo

*mf* 1. In the town where I was born, lived a man who sailed to  
sailed on to the sun, till we found the sea of

SL 4

Study the music extract and write down the chord for the notes in the extract and put your answers in the boxes provided below.

# Yellow Submarine

Words & Music by John Lennon & Paul McCartney

*mf* 1. In the town \_\_\_\_\_ where I was born, lived a man \_\_\_\_\_ who sailed to  
sailed \_\_\_\_\_ on to the sun, till we found \_\_\_\_\_ the sea of

Study the pictures and answer the Questions 37 and 38.

37. The artist in Figure 1 is popular for what type of music genre?



Figure 1

\_\_\_\_\_

SL 1

38. Elvis Presley (Figure 2) is known as the “King” of what type of music genre?



Figure 2

\_\_\_\_\_

SL 1

39. Briefly describe the **Samoan pop music** genre.

\_\_\_\_\_

\_\_\_\_\_

\_\_\_\_\_

\_\_\_\_\_

\_\_\_\_\_

\_\_\_\_\_

SL 2

40. Describe one way technology has changed the music industry.

---

---

---

---

---

---

SL 2

41. Explain the importance of the **lali** instrument in the Samoan culture.



SL 3

---

---

---

---

---

---

---

---

---

---

---



42. **J. Boog** is a maestro of modern reggae and is known for his contribution to contemporary Samoan music both locally and globally.

Explain how this artist uses his music to connect with his audiences around the world.



Source :<https://www.youtube.com/channel/>

This image shows a blank sheet of white paper with horizontal ruling lines. The lines are evenly spaced and run across the width of the page. There are no margins, text, or other markings on the paper.

<b>SL 3</b>

43. Discuss how music can serve as a powerful tool for improving mental health. Support your answer with examples.

[illegible]

SL 4

---

---

---

---

---

---

---

---

---

---

44. **Opetaiia Foa’i** is a famous Samoan songwriter/artist who is a prominent figure in the Pacific, known for his impactful contributions to music and culture.



Source: <https://www.facebook.com/opetaiafoai/>

Discuss how his music has promoted the Pacific culture to a global audience. Support your answer with examples.

---

---

---

---

---

---

---

---

---

---

SL 4



STUDENT EDUCATION NUMBER									

## SNJSC MUSIC

**2024**

(For Scorer only)

STRANDS		Weighting	Scores	Check Scorer	AED check
<b>STRAND 1</b>	MUSIC APPRECIATION	50			
<b>STRAND 2</b>	MUSIC PERFORMANCE	26			
<b>STRAND 3</b>	MUSIC HISTORY	24			
<b>TOTAL</b>		<b>100</b>			