



# FUAFUAGA A LE VAEGA MA'OTI O AOAOGA 2025-2030

A'oa'oga ma Fa'atufugaga  
Oloula mo Tagata Uma



## Upu Tomua



E ia te a'u le agaga fiafia tele e tu'uina atu ai lenei Fuafuaga mo le Vaega Ma'oti o A'oa'oga 2025 i le 2030. O le lona tolu lenei o Fuafuaga a lenei vaega ma'oti i le silia ai ma le sefululima tausaga talu ai. O se fa'atinoga ua fa'amālosia ai le fa'agaioiina, pūleaina, ma le tautua e ala i vaega ma'oti e 14 o le atunu'u. O lenei fuafuaga sa fausia fa'atasi ma Fa'aulu'uluga o Vaega Fa'atino ma a latou Pulega fa'atasi ai ma sui mai le Fa'alapotopotoga Tuma'oti o le Fono Fa'atonu o Ā'oga Amata a Sāmoa (FFAAS) ma le Sosaiete a Faiā'oga i Sāmoa (SFS). O fa'atalatalanoaga sa fa'avae i luga o le Ripoti Su'esu'e a le VA 2024 ma le lloiloga atoa o le FVA 2019-2024.

O le Fuafuaga a le Vaega Maoti 2025 – 2030, o loo sosolo ma ōgatasi ma le faamuamua a le Malo o ai nei ina ia ogatotonu tagata ia laugatasia ma sauo'o suiga ina ia ausia faamoemoega faataatitia. O lenei fuafuaga o le a faatino ai le vaaiga taula'i a le Malo e taula atu i aoaoga oloula ma sauo'o, o le atina'eina o tomai ma agava'a talafeagai, o pulega lelei ma ia mafai ona tali atu i suiga alia'e mai.

E aloa'ia e le tatou vaega le tūua o faiga fa'apō'aga lea e iai matōfaioi patino mo le aga'i i luma i taunu'uga mo'omia o a'oa'oga ma fa'atufugaga anoa mo tagata uma". E talisapaia atunu'u taitasi, fa'alapotopotoga fa'avōmōlō ma fa'alapotopotoga i le Itulagi o le Pasefika, ia fa'aaogāina lenei FVA, o se ta'iala e fa'ailoa ai ni vaega o lo'o mo'omia ai le fesoasoani i lenei vaega ma'oti, i ni vaega o ō gatusa ai ma a latou sini.

Ou te fa'ailoa ai ma le agaga fa'agae'etia le galuega fitō sa fa'atautaia i le fa'amaeaina o lenei Fuafuaga, mai lava i taiulu o o le tafatolu o Vaega Fa'atino seia paia a tatou pō'aga i Ā'oga ma fa'alapotopotoga, ma pō'aga atina'e o e o lo'o lagolagoina lenei galuega e le gata i le itu tau tupe ao faufautua ma tagata e i ai tomai fa'apitoa.

Matou te fiafia e galulue fa'atasi ma a tatou pō'aga i Sāmoa ma fafo atu, ina ia manuia le fa'atinoina o lenei FVA2025-2030 mo se lumanai manuia mo tagata Sāmoa uma.

Fa'afetai

Hon. Aiono Alec Ekeroma - ONZM, PhD  
Minisita o Aoga ma Aganuu





# FUAFUAGA A LE VAEGA MA'OTI O AOAOGA 2025-2030

A'oa'oga ma Fa'atufugaga  
Oloula mo Tagata Uma





## Feau mai Faaululuga o Vaega Faatino ale Vaega Maoti o A'oa'oga

I le faamae'aina ai o le Fuafuaga fou ale Vaega Maoti o A'oa'oga 2025-2030, o lo'o faamoemoe o le atoaga o le faatinoga o galuega fuafuaina, o le ā siitia ai le tulaga e tuuina atu ai le auaunaga tau a'oa'oga mo tagata Samoa uma. O le taimi foi lea, ua fa'afaigofie ona maua avanoa tututsa o tagata o lo'o a'oa'oina. O le i ai fo'i o punaoa mo faatinoga o se vaega taua lea i le ausia o faamoemoega o lo'o otooto mai i totonu o le fuafuaga.

O matou o Vaega Faatino, e tautino atu o le ā matou faatino ina galuega uma o le nei fuafuaga i le measili matou te mafaia, e ala i le galulue faatasi, galulue ma i latou o loo tuuina atu auaunaga tau a'oa'oga i soo se vaega, aemaise ole fesoasoani a tatou paaga atina'e. Matou te fia faailoa ina foi matou feso'otaiga ma isi vaega maoti ma o loo silasilla i se auala e fa'aaoga ai ia faiga fa'apaaga e mafai ai ona faasoa punaoa mo le ausia o taunuuga mauaululuga.

E i ai avanoa o le ā mafai ona faafaigofieina ai le faatinoina o galuega ina ia ō gatusa galuega a vaega faatino ma le vaega maoti o a'oa'oga e faaitiitia ai le ono faia faalua o ni taumafaiga ma faatupega talafeagai. E matou te faaaogaina mai foi le Fuafuaga mo le Atina'eina o Tomai ale Vaega o A'oa'oga, Ta'iala o le Gafatiaina o Aafiaga o Suiga ole Tau & Faalavelave Matuia ale Vaega o A'oa'oga male Taiala mo lloiloga ale Vaega Maoti e tomatauina ai le gafatia o le au faigaluega a Vaega Faatino.

E faamalō foi i le Inisituti o A'oa'oga mo le latou matāfaioi, Iunivesite o le Pasefika i Saute, mo lō latou lagolagosua i le mamanu ina faatasi male fa'amae'aina o le nei fuafuaga ale vaega maoti. E fia faailo foi le agaga faafetai i sui auai o le Komiti Galue ale Vaega Maoti o A'oa'oga ma ā matou paaga uma i lō latou sao taua i le fausiaina male faaumaina o le nei Fuafuaga.

Matou te faamoemoe e faaleleia matou faiga paaga o loo iai i le taimi nei aemaise ole faamauina o ni faiga paaga fou i totonu o le nei lima tausaga o le faatinoga o galuega

A'eau Christopher Hazelman  
OSP, MAA

Tuifuisa'a Patila Amosa  
SF/Peresitene, IAOS

Tupa'i Peter Peilua  
OSP, PFTTS



## Anotusi

<b>VA'AIGA TAULA'I MA MANULAUTĪ</b>	<b>4</b>
<b>FA'AUMI O UPU</b>	<b>5</b>
<b>FA'ATONUFOLAU MO FUAFUAGA</b>	<b>7</b>
<b>LAULILIUINA O LE VAEGA O A'OA'OGA</b>	<b>8</b>
O AVANOA MAUA MA LE AUAI	8
TAUNU'UGA O A'OA'OGA	9
FAIĀ'OGA	10
O ISI TULAGA FA'ALOTOIFALE	10
FA'ATULAGAINA O LE VAEGA MA'OTI	11
FAUSIA O FAIGA FA'AVAE	11
<b>FA'AMUAMUA A LE FUAFUAGA O A'OA'OGA 2025-2030</b>	<b>12</b>
<b>FA'AVAE O SUIGA</b>	<b>13</b>
<b>SINI 1: A'OA'OGA OLOULA MA FA'ATUFUGAGA</b>	<b>14</b>
TAUNU'UGA MO'OMIA 1: FA'ALELEIA O TAUNU'UGA MO A'OA'OGA MA TAUNU'UGA MO E FA'AU'U	14
TA'IALA	14
<b>SINI 2: AVANOA TUTUSA MA SAU'O</b>	<b>16</b>
TAUNU'UGA MO'OMIA 2: IA IAI AVANOA TUTUSA, MA SAU'O TAGATA I A'OA'OGA OLOULA.	16
TA'IALA	16
<b>SINI 3: A'OA'OGA TALAFEAGAI MA SAO I LE ATINA'EINA O SĀMOA</b>	<b>18</b>
TAUNU'UGA MO'OMIA 3: FA'ALELEIA LE TALAFEAGAI O A'OA'OGA MA SAO I LE ATINA'E TUMAU O SĀMOA	18
TA'IALA	18
<b>SINI 4: FA'ATINOAGA A LE VAEGA MA LE FETU'UNA'IGA O GALUEGA</b>	<b>20</b>
TAUNU'UGA MO'OMIA 4: O SE VAEGA O A'OA'OGA E ATO'ATO ANA FA'ATINOAGA, MA VAVE ONA FETU'UNA'I	
ANA GALUEGA	20
TA'IALA	20
<b>FA'ATULAGAGA MA LE FA'AFOEGA O LE VAEGA MA'OTI</b>	<b>22</b>
<b>FA'ATONUFOLAU MO LE FA'AAOGĀINA O TUPE (FFT)</b>	<b>23</b>
AOTELEGA	23
ATA O LE FA'ATUPEINA O LE FVA 2025 – 2030 I LONA AOTELEGA	23
TAU FA'ATA'ITA'I O LE FVA 2025-2030 I VAEGA E FA O LE VAEGA MA'OTI	24
FUA FA'ATATAU O TUPE MO LE FA'ATINOAGA O LE FVA 2025-2030	25
PŪLEA, MATA'ITUINA MA LE LIPOTIINA O TUPE	26
<b>MATA'ITUINA, FUATAGA MA LE TOE FUATA'INA</b>	<b>27</b>
ILOILOGA FA'ALETASAGA A LE VAEGA O A'OA'OGA	27
ILOILOGA VAELOTO (MID-TERM REVIEW)	27
ILOILOGA I LE FA'AIUGA O LE FVA 2025-2030	28
LESONA NA MAUA MAI I LE MATA'ITUINA MA FUATAGA	28
FA'AILOILO AUTŪ O FA'ATINOAGA	29
<b>FA'ATONUFOLAU MO LE FA'AFOEINA O TULAGA LAMATIA E ONO A'AFIA AI LE FA'ATINOINA O GALUEGA FVA 2025-2030</b>	<b>35</b>
<b>FUAFUAGA MO GALUEGA FA'ATINO O LE FVA 2025-2030</b>	<b>37</b>
<b>TUSI FA'AAOGĀINA</b>	<b>43</b>
<b>PEPA FA'AOPPOPO 1: MATĀTI'A O LE SDG4</b>	<b>44</b>
<b>PEPA FA'AOPPOPO 2. TAU FA'ATA'ITA'I O LE FVA 2025-2030</b>	<b>46</b>



## Va'aiga Taula'i

A'oa'oga ma fa'atufugaga anoa mo tagata uma

## Manulauti

Ia maua avanoa tutusa ma sauo'o a'oa'oga ina ia  
si'itia tulaga lelei, o a'oa'oga ma fa'atufugaga,  
i le olaga atoa, o tagata uma.

### Agatausili

Fa'aaloalo  
Tutusa le fa'asoa  
Ia anoa fa'atinoga  
Aofia so'o se tagata  
Manino fa'aiuga  
Tali atu Auili'ili  
Savali i fa'aiuga  
Au'aunaga fa'aauau

### O a tatou Alafua

Ia Ato'atoa ma āogā  
Au'aunaga vave toe lelei  
Tulaga talafeagai  
Fa'apā'aga  
Galulue Felagolagoma'i  
Tali lelei i suiga  
Tofa Fetu'utu'uuna'i



## Fa'aumi o Upu

AI	ATfT	Atamai Taumasini fausia e Tagata
DPs	PtA	Pā'aga tau Atina'e
ECE	AA	Ā'Ā'oga Amata
ESAC	KFVA	Komiti Fauautua a le Vaega Ma'oti o A'oa'oga
ESCD	VFVA	Vaega Fa'afoe a le Vaega Ma'oti o A'oa'oga
ESP	FVoA	Fuafuaga a le Vaega Ma'oti o A'oa'oga
ESWG	KGVA	Komiti Galue a le Vaega o A'oa'oga
GER	FATR	Fuaitau Aofa'i o Tamaiti Resitalaina
HIES	STMTFA	Su'esu'ega o Tupe Maua ma Tupe Fa'aalu a 'Āiga
ICH	TALF	Tofi o le Aganu'u e Lē Faitino
ICT	FFF	Fa'amaumauga ma Feso'ota'iga Fa'atekonolosi
KPI	FTGF	Fa'ailoilo Talafeagai mo Galuega Fa'atino
LMIC	AMT	Atunu'u e Maualalo le Tamāoāiga
MEC	MAA	Matāgaluega o Ā'Ā'oga ma Aganu'u
MEL	MILA	Mata'ituina, Iloiloga ma Lesona A'oa'oina
MESC	MATA	Matāgaluega o A'oga, Ta'aloga ma Aganu'u
MoF	MoT	Matāgaluega o Tupe
MTEF	FTFV	Fa'atonufofau o Tupe Fa'aaogā mo se Vaitaimi
NFL	ALA	A'oa'oga le Aloa'ia
NUS	IAoS	Iunivesite Aoao o Sāmoa
PSET	AF	Ā'oga Fa'aauau
QAPA	IFFA	Iloiloga o Faiā'Ā'oga mo le Fa'aleleia o le Au'aunaga
RGs	KMF	Komiti mo Matā'upu Fa'apitua



SC	TPS	Tusi Pasi a Sāmoa
SNAPE	SNAPE	Su'ega mo le Tausaga 8
SPELL	SPELL	Su'ega mo le Tausaga 4 & 6
SQA	SQA	Pūlega o Fa'aailoga ma Tusi Pasi Taualoa a Sāmoa
SSLC	SSLC	Tusi Pasi a le Tausaga/Vasega 12
STEM	STEM	Matā'upu tau Saienisi, Tekonolosi, Fa'ainisia, ma le Numera
TCH	TAF	Tofi o le Aganu'u e Faitino
TVET	TVET	A'oa'oga i Matātāese'ese ma Fa'atufugaga





## Fa'atonufofou mo Fuafuaga

Fa'atonufofou o Fuafuaga a le Vaega Ma'oti o A'oa'oga				
Fa'avāomālō	<p><b>O Sini mo Atina'e Fa'aaauu a le Mālō Afa'atasi 2030</b>  <b>Sini mo Atina'e Fa'aaauu 4: A'oa'oga Anōa</b>                      la maua avanoa tutusa ma aofia uma tagata i a'oa'oga anōa i so'o se taimi o le soifua'aga</p>			
Itulagi o le Pasefika	<p><b>Fa'atonufofou o a'oa'oga i le Itūlagi o le Pasefika 2018-30</b>                      Vaega o Faiga Fa'avae: A'oa'oga Anoa ma Talafeagai; Ala ese'ese o a'oa'oga ; Taunu'uga Mo'omia mo tagata a'oa'oina ma ia soifua laulelei; Tu ma Aga Fa'a-Faiā'oga</p>			
Sāmoa	<p><b>Ta'iala mo le Lumana'i Manuia o Sāmoa 2021-2025</b>                      Fa'amuamua 3: A'oa'oga Anoa                      Taugofie le auai i a'oa'oga anoa i so'o se vasega- Maualuga tulaga ausia i su'ega mo so'o se vasega – la si'itia ma talatala A'oa'oga, fa'atufugaga &amp; polokalame talafeagai</p>			
Vaega Ma'oti o A'oa'oga	<p><b>Fuafuaga o le Vaega Ma'oti 2025-2030</b>                      A'oa'oga Anoa mo tagata uma i Sāmoa                      Fa'aleleia o taunu'uga mo a'oa'oga ma i latou e fa'au'u – la i ai avanoa tutusa, ma aofia uma tagata i a'oa'oga –Si'itia a'oa'oga talafeagai ma le atina'eina o Sāmoa – la lelei ato'atoa fa'atinoga ma vave ona fetu'una'i ana galuega</p>			
Vaega ua vaevaeina iai le Vaega Ma'oti	Ā'oga Amata	Ā'oga Tulaga Lua	Kolisi	Ā'oga Fa'aaauu



## Lauliliuina o le Vaega o A’oa’oga

O le Lipoti o le Iloiloga Vaeloto (Mid-term Review) mo le Fuafuaga a le Vaega o A’oa’oga 2019-2024 ma le Polokalame Lagolago mo le Vaega o A’oa’oga 2020-2024 na fa’ailoa mai ai le tele o galuega ua ausia i le atina’eina o fa’avae ma ala fa’atulaga i totonu o le vaega o a’oa’oga. Ua maua galuega i “faiga ma fa’atinoga mo le fa’atulagaina o pulega; resitalaina ma le fa’amaonia o faia’oga; faiga mo le siakiina o tulaga lelei; ma le galulue fa’atasi mo le atina’eina o pepa fuafua fa’atāua ma fa’avaa” (ERO, 2022, itulau 13). O le Lipoti o le Iloiloga Vaeloto na fautuaina ai suiga i vaega nei: aoaoina o le faitautusi i le Gagana Sāmoa ma le Gagana Peretania i ituaiga Ā’oga ma vasega uma, toe iloiloina o galuega fa’atino i le faitautusi ma le ave’esea o polokalame le aogā, siitia tulaga o tusi faitau e tu’uina atu i tausaga fa’atulaga i le Gagana Sāmoa ma le Gagana Peretānia ma toe fa’afouina o le mataupu aoaoina o a’oa’oga mo Ā’oga tulagalua, fa’aleleia atili le va’ai i tulaga lelei o faia’oga ma le atina’eina o ta’ita’iga oĀ’oga, taula’i i metotia lelei mo le a’oa’oina, galulue fa’atasi o vaega ese’ese, feso’otaiga ma le ta’ita’iga o le vaega atoa. Ua amata nei e le vaega ona fa’atino ni isi o nei fautuaga e pei o le iloiloina ma le fa’afouina o le fa’atonufofou o aoĀ’oga mo Ā’oga tulagalua ma le fa’aleleia o feso’otaiga i vaega uma.

O le Lipoti o le Iloiloga o le Fuafuaga a le Vaega o A’oa’oga (ESP) 2019-2024 o lo’o fa’aaauu pea ona fa’ailoa mai le vaega o lo’o tauivi pea ma lu’itau tumau a’oa’oga. fa’amālosia, e ui i taumafaiga ma faiga fa’avae fou. O le fa’atinoga i fua fa’atatau o galuega fa’atino i le fuafuaga a le vaega talu ai, ua ese’ese, ma o ni isi vaega tāua o le ausia o le a’oa’oina ua le ausia ai fua fa’atusatusa.

O a’afiaga o le ausia o fua fa’atatau o galuega fa’atino mo le fuafuaga a le vaega, e mālamalama lava, ona o le tele o tausaga o fa’alavelavea a a’oa’oga. O nei fa’alavelavea sa mafua i le tapunia o ā’oga i le taimi o le misela i le 2019-2020, lea na soso’o vave mai ai le fa’amai o le Koviti-19, fa’atasi ai ma ā’oga na tapunia, o fa’atonuga mo le tulaga o fa’alavelave fa’afuase’i ma le toe fa’asoa o seleni mo le tali atu i le fa’amai. O le vaitaimi o le Fuafuaga a le Vaega o A’oa’oga 2019-2024 e tolu i le fa’atatau o fa’alavelavea.

Sa matuā lelei le tali atu i le faiga o a’oa’oga i le tapunia o ā’oga ma vavao ona o le Koviti-19 e ala i le fa’atinoga o a’oa’oga i luga o upega tafa’ilagi ma a’oa’oga mamao (fa’ataitaiga, Moodle, TV fa’alauaitetele, leitio, puna’oa lomía, upega feso’otai, ma isi tulaga e pei o fonu i luga o upega tafa’ilagi). E ui ua fa’aalia e le vaega le mālosiaga i le toe fa’aaauuina o ana galuega fa’atino, o le isi taimi o le fuafuaga a le vaega o a’oa’oga o le a maua ai le avanoa e fa’aleleia ai a’oa’oga ua ausia e tamaiti ā’oga ma isi fua fa’atatau tāua.

## O Avanoa Maua ma le Auai

O le auai i a’oa’oga amata (ECE) mo tamaiti 3-5 tausaga i Sāmoa e mau’alalo ifo i a’oa’oga a tulagalua ma a’oa’oga maualuga. I le 2023, o le resitala aoao i le ECE sa 31% (tama 29%, teine 32%) ma le resitala fa’amaumau sa 27% (tama 26%, teine 28%). O le resitala i Ā’oga tulagalua na si’itia i le 5% pe a fa’atusatusa i le 2019-2024 mo tamaiti tama ma teine i vasega uma. O tama sa maualuga te isi le la latou aofa’i i le resitala aoao (52%) i le 2023 fa’atusatusa i teine. O a’oa’oga tulagalua e tumau pea le maualuga o le auai, ma o le aofa’i aoao o le resitala (GER) ua i le 100% pe sili atu mo tama ma teine i le va o le 2019-2024. O lenei maualuga o le GER o lo’o fa’aalia ai le manuia o le vaega i le tu’uina atu o avanoa mo a’oa’oga tulagalua ae o lo’o fa’aali mai ai foi lu’itau i le taulimaina o tamaiti ā’oga uma. I a’oa’oga maualuga, o le resitala i Ā’oga sa ese’ese i le va o le 2019-2024. O le aofa’i aoao o le resitala mo a’oa’oga maualuga na



si'itia i le 17% i le va o le 2019-2023, ma o teine na sili atu le la latou aofa'i nai lo'o tama. I le 2023, o teine na 55% o tamaiti A'oga i A'oga maualuga fa'atusatusa i le 45% o tama. O lenei ese'esega i le itūpa i le resitala e fa'alautele a'o gāsolo i luma tamaiti A'oga i a'oa'oga maualuga. O le resitala i tusipasi o le PSET na si'itia i le va o le 2017 ma le 2022 ma o aofa'i o le resitala i le 2022 sa aofa'i atoa i le 6,678, lea o teine sa 58%, ma tama sa 42%. O le pasene o Sāmoa e 15 tausaga ma sili atu sa maua tusipasi maualuga na si'itia mai le 13% i le 2016 i le 17.2% i le 2021 (19% o tamaita'i ma 16% o alii e 15 tausaga ma sili atu).

I le aotelega, o le auai i le ECE e tele lava se vaega e mafai ona fa'aleleia; o le resitala i ā'ā'oga tulagalua o lo'o lelei, a'o le auai i ā'ōga maualuga e maualalo ifo i le fa'amoemoega, aemaise mo tama, ae o lo'o iai fa'ailoga o le si'itia. O le resitala i le PSET o lo'o si'itia, ma o lo'o fa'aauau le si'itia o le aofa'i o tagata Sāmoa e maua tusipasi maualuga.

## Taunu'uga o A'oa'oga

O le aofa'i o a'oa'oga ua leiloa/ma'ua mai le lua tausaga o pa\taofi ma toe fa'aauau ona o le fa'amai o le Koviti-19 e le o mālamalama ato'atoa i ai, a'o luitau i le faiga o le a'oa'oga o lo'o fa'aauau ona fa'alavelave i le si'itia o a'oa'oga ua ausia.

O le tulaga o le faitautusi ma le numera o tamaiti ā'ōga o lo'o tumau pea i lalo o tulaga o fua fa'atusatusa i vasega tulagalua ma vasega maualuga. O le tulaga o le faitautusi (Gagana Peretania ma le Gagana Sāmoa ), ma numera o tamaiti ā'ōga i le Tausaga 4 ma le Tausaga 6 o lo'o tumau pea i lalo o tulaga o fua fa'atusatusa. Fa'ata'ita'iga, i le 2022, o le to'atele (68% i le 95%) o tama Tausaga 4 fa'apea teine sa i le tulaga 'Fa'atinoina' mo le faitautusi i le Gagana Sāmoa, faitautusi i le Gagana Peretania, Numera ma le faitautusi i le Fa'asaienisi. I le Tausaga 6, o le to'atele (65% i le 89%) o tama fa'apea teine sa i le tulaga 'Fa'atinoina' mo le faitautusi i le Gagana Sāmoa, faitautusi i le Gagana Peretania, Numera ma le faitautusi i le Fa'asaienisi.

O iuga o le SNAPE i le Tausaga 8 o lo'o fa'aalia ai le to'atele o tama fa'apea teine o lo'o i le tūlaga Ausia pe sili atu, mo le Gagana Peretania, Numera, Gagana Sāmoa, Saienisi ma A'oa'oga Lautele. Ae peita'i, o fuataga aoao o le a'oa'oga maualuga o lo'o fa'aalia ai le tutusa i le Tausaga 4 ma le Tausaga 6. O le silia ma le afa o tamaiti ā'ōga i le T12 sa i le tulaga o le Amata mo le Gagana Peretania, Matematika, ma Saienisi i le 2022 ma sa to'atele tama nai lo'o teine i le tulaga o le Amata i le Gagana Peretania ma le Matematika. I fuataga o le SSLC i le 2022 o lo'o si'itia le aofa'i o tamaiti ā'ā'oga i le tulaga o le Amata mo le Matematika, Gagana Sāmoa ma le Fisiki.

O le va'ai i le ausia o le tulaga lelei i le a'oa'oga o lo'o tumau pea, ma o tama o lo'o matuā maualalo le fa'atinoga ma e ono tu'ua le ā'ōga ae le'i mā'ea tausaga ā'ōga. E tasi mai i le to'a lua o tama ma e tasi mai i le to'a fa o teine e tu'ua le ā'ōga ae le'i mā'ea le Tausaga 12. E tolu mai le to'a lima o tama ma le lua mai le to'a lima o teine e tu'ua le ā'ōga ae le'i mā'ea le Tausaga 13. O lea'afiaga o metotia fou talu ai le lē fa'amā'eaina o a'oa'oga maualuga, e pei o le suiga i le faiga o le fa tausaga ma le fa'aofi'ina o auala ese'ese o le matematika ma le Gagana Peretania, e le'i maitauina. O le tulaga o le suiga mai le a'oa'oga tulagalua i le a'oa'oga maualuga ua maualalo ifo i le va o le 2019 ma le 2023.

O le mana'omia o le galulue fa'atasi i le vaega atoa ma le galulue fa'atasi o vaega ese'ese i su'esu'ega i galuega fa'atino ā'ōga, o lo'o tāua pea i le taimi nei, ona o le tumau pea o le lē manuia i a'oa'oga o tamaiti ā'ōga ma avanoa o le auai. O nei lu'itau i le faiga o a'oa'oga e mana'omia le galulue fa'atasi i le vaega atoa ma le galulue fa'atasi o vaega ese'ese ina ia mafai ona maua se suiga moni.



## Faiā'oga

O le aufaigaluega fa'afaiā'oga ua si'itia i le 9.2% mai le 2019 i le 2023 ma 1,558 faiā'oga ā'oga tulagalua sa fa'amauiina i le 2023. O faiā'oga uma o a'oa'oga tulagalua e iai tusipasi, e ui e ese'ese le tulaga o tusipasi. E tusa ma le afa (46%) o faiā'oga uma o ā'oga tulagalua e iai le tikeri o le A'oa'oga, ma o ā'oga a le mālō e matuā maualuga lava numera o faiā'oga e iai tikeri (58%) fa'atusatusa i ā'oga a ekalesia ma ā'oga tuma'oti (13% ma le 17% fa'atatau). O a'oa'oga maualuga ua maitauina le fa'aleleia o tusipasi o faiā'oga ma 68% o faiā'oga e iai tikeri. O le aofa'i o tamaita'i i faiā'oga o a'oa'oga maualuga ua si'itia mai le 58% i le 2019 i le 62% i le 2023. O le fa'atulagaina o le itūpa o faiā'oga o ā'ā'oga maualuga fa'apea ma ā'ā'oga tulagalua i Sāmoa e sili atu i tamaita'i ma e fa'aalia ai le mana'omia o polokalame e tosina ai ali'i i le galuega fa'afaiā'oga. Ae peita'i, o le PSET sa iai le tulaga ese i le 2022 ma sa iai i le 62% o le 447 o le aufaigaluega fa'afaiā'oga sa fa'amauiina. O le aufaigaluega fa'afaiā'oga o le PSET sa si'itia i le 6% i le va o le 2021 ma le 2022. O le to'atele o le aufaigaluega fa'afaiā'oga o le PSET sa iai tikeri maualuga (39%) ma fa'ailoga tikeri (28%) i le 2022.

## O Isi Tulaga Fa'alotoifale

A'o le'i o'o mai le fa'amai o le Koviti-19, sa fa'ailoa e le Faletupe o le Lalolagi o Sāmoa o se atunu'u Tupe Maua i le Tulaga Lotoloto i Luga ae o le tulaga o le mativa mo Sāmoa sa fuafuaina i le 35.0%. O le pa'ū o tamāoā'iga i le lalolagi ona o le tapunia o tua'oi mo le Koviti-19, sa tele lona a'afiaga i le tamāoā'iga o Sāmoa ma sa va'aia le tapula'a. O le mea na mafua ai, sa toe fa'avae le tulaga o Sāmoa i le 2021 i le Atunu'u Tupe Maua i le Tulaga Lotoloto i Lalo (LMIC). O fa'amatalaga talu ai mai le Ofisa o Fuāinnumera o Sāmoa o lo'o fa'aalia pea lu'itau o le mativa i Sāmoa, e ui i le fa'aleleia o le tuputupu o le tamāoā'iga. E tusa ai ma le lipoti o le Mativa ma Luitau 2023, e ui ina si'itia te isi le mativa i mea'ai ma mana'oga fa'avae, o le to'atele o tagata e tumau pea le lamatia. O fa'amatalaga talu ai mai le Su'esu'ega o Tupe Maua ma Fa'aaogāina a Ā'iga (HIES) 2018, lea na fa'afou i le lipoti 2023, o lo'o fa'aalia ai e 21.9% o tagata Sāmoa o lo'o nonofo i lalo o le laina o le mativa i mana'oga fa'avae ae o le 5.2% o lo'o nonofo i lalo o le laina o le mativa fa'alelotoifale i mea'ai.

E ese mai le mativa, o isi foi matā'upu e a'afia ai le lelei o tamaiti ā'oga, ma o latou avanoa e manuia ai i a'oa'oga i le ā'oga. O mea ua maua e fa'atatau i le lautele o sauāga fa'afeusua'i i Sāmoa o lo'o fa'aalia ai e iva mai le sefulu o tamaiti e o'o iai fa'asalaga ōga'oga i le fale. E lua vaega mai le tolu o ā'iga i Sāmoa o lo'o ta'ita'ia e ali'i ma e fa'afeagai le ono i le fitu tagata i le ā'iga. O ā'iga toatele e iti'iti le taimi ma le nofoaga patino mo tamaiti e a'oa'o ai pe a fai ai galuega fai i le fale, ona o tamaiti ma tupulaga e nafa ma galuega, ma tausia tamaiti lāiti, pe ā o tagata matutua. O le fa'afaletonu o galuega e a'afia tele ai tamaiti tama, e manino i mai i mea ua maua i le Lipoti o le Vaa i le Ausia o le Itūpa a le MEC 2023. O tiute fa'alenu'u mo ali'i ma tamaita'i e ono iai sonaa'afiaga i le auala e tali atu ai tama ma teine i a'oa'oga ma metotia. O tamaiti aemaise lava tama, e ono iti'iti le taimi ma le fiafia e auai i le ā'oga ma le a'oa'oga, ona o tiute i le ā'iga ma le nu'u ma e fesoasoani ai i le va'ai i le itūpa i le ausia o a'oa'oga.

O le taulimaina o nei vaega fa'alenu'u ma fa'atupu ola ese'ese e ala i le galulue fa'atasi i le vaega atoa ma vaega ese'ese e tāua mo le fa'aleleia o avanoa o a'oa'oga ma avanoa tutusa i Sāmoa.





## Fa'atulagaina o le Vaega Ma'oti

O fuafuaga fa'apitolua mo le vaega atoa o a'oa'oga sa va'aia i Sāmoa talu mai le Ōgatotonu o 1990, e ui o le Fuafuaga a le Vaega o A'oa'oga 2013-2018 sa va'aia o le fuafuaga muamua aloa'ia a le vaega. O le fa'atinoina o fuafuaga i le vaega ma'oti atoa, atina'eina ma fa'afuafuaina o le tupe mo a'oa'oga sa avea ma vaega o se suiga i le au'aunaga a le mālō na fa'alauiloa e le Matāgaluega o Tupe i le 2010 lea na fa'atasi ai le Matāgaluega o Ā'oĀ'oga, Ta'alogā ma Aganu'u o lena vaitaimi, Iunivesite Aoao o Sāmoa, ma le Pūlega o Fa'ailoga Tusipasi Taualoa a Sāmoa. O le alava'a o le fuafua'aga a le vaega atoa e aofia ai le fa'atulagaina o fuafuaga a ofisa o le vaega, fautuaina, pā'aga, lagolago i le tupe atina'e mo le vaega ma atina'eina o se Fuafuaga o Tupe Fa'aaogā Vaeloto a le Vaega, lea e fetui lelei ma faiga fa'atonutonu fa'avaomālō

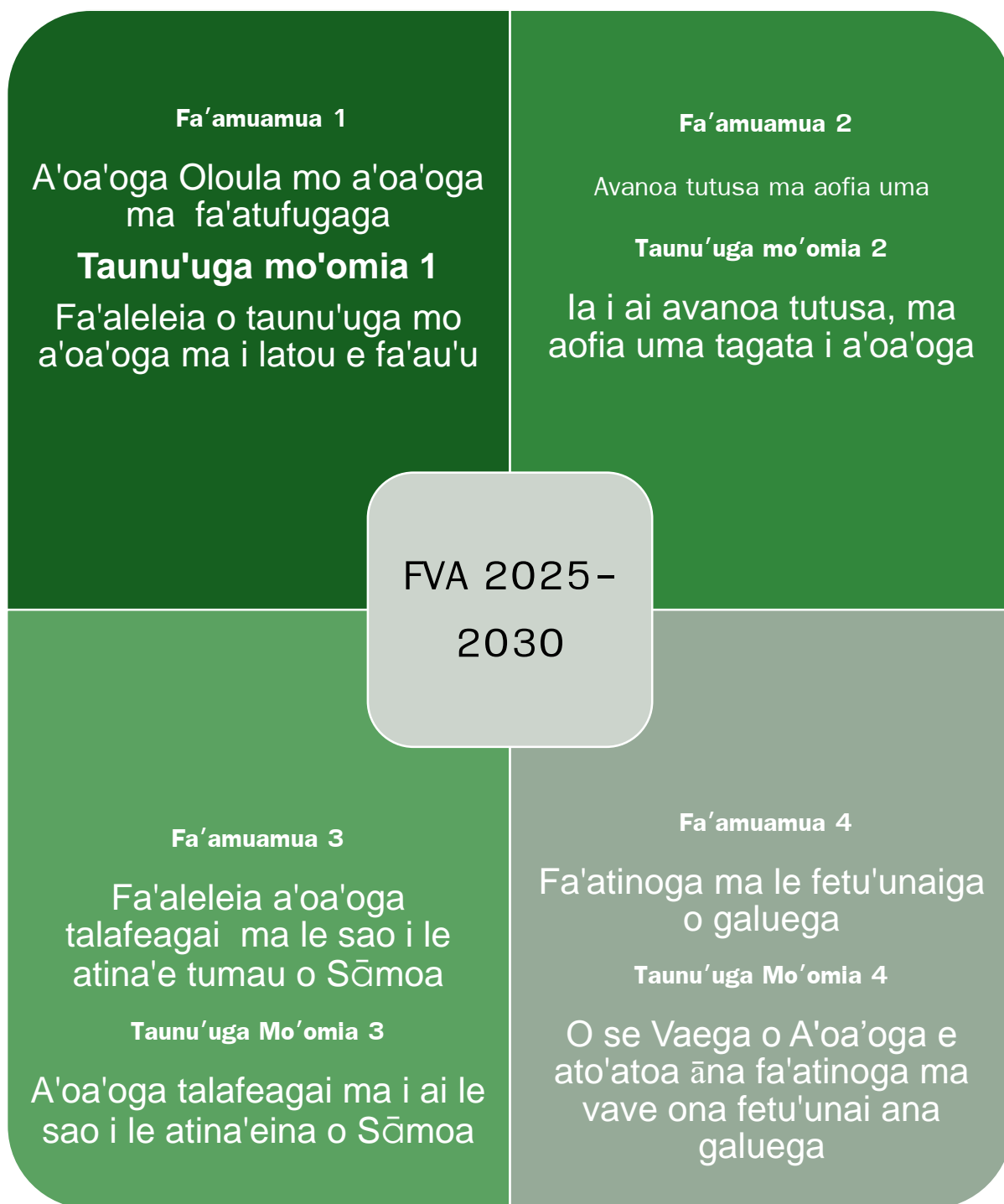
## Fausia o Faiga Fa'avae

O faiga fa'avae iloga na fausiaina i le vaega o a'oa'oga i totonu o le lima tausaga talu ai e aofia ai le fa'amālosia o ta'iala fa'avae mo le atina'eina o faiā'oga, pūlega o ā'oga, a'oa'oga aofia mo tamaiti e i ai mana'oga tumau, aganu'u i a'oa'oga ma fa'amaonia o oloula aupito mana'omia mo Ā'oga Fa'aaauu. Mo le atina'eina o faiā'oga, ua va'aia lona a'afiaga i le si'itia o le aofa'i o faiā'oga e iai tikeri ma le si'itia o le auai o faiā'oga ma ta'ita'i ā'oga i galuega fa'atino e atina'e ai tomāi. I le aofia o tamaiti e i ai manā'oga tumau, o le a'afiaga e va'aia i le si'itia o le aofa'i o tamāiti e i ai manā'oga tumau e resitala i ā'oga tulagalua ma le si'itia o le aofa'i o faiā'oga ua a'oa'oina e lagolagoina a'oa'oga mo tamaiti e i ai mana'oga tumau. O le fa'amaonia o tusipasi PSET ma le fa'amaonia o galuega a ā'oga fa'aaauu, le aloa'ia, ua si'itia lemū i le lima tausaga talu ai. Ae peita'i, e iai le avanoa mo le fa'amālosia o le fa'atulagaina o faiga fa'avae i le vaega o a'oa'oga atoa, ina ia fa'amālosia le lelei i le vaega atoa e Ōgatusa ona tu'uina atu a'oa'oga lelei mo tagata uma.

O le iloiloga o lo'o fa'aalia ai ni vaega e ave iai le fa'amua mo le fuafuaga o le vaega o lumana'i, e aofia ai galuega fa'asino mo le numera ma le faitautusi, fa'aleleia le auai i A'oa'oga Amata, fa'aleleia taunu'uga o le fa'amāe'aina o ā'oga maua luga, fa'ateleina o avanoa TVET e fa'amālosia ai alāfua o a'oa'oga fesuia'i, fa'amālosia a'oa'oga aofia, su'esu'ega ma le fa'atūlagaina o faiga fa'avae a le vaega at ma lagolagoina atina'eina o tomāi o le PSET. E iai le avanoa e fa'ateleina ai le taula'i i le faiga o fa'aiuga fa'avae i fa'amaoniga e ala i galulue fa'atasi i a'oa'oga ma su'esu'ega ma le fa'aleleia o faiga mo le mata'itūina ma fuataga.



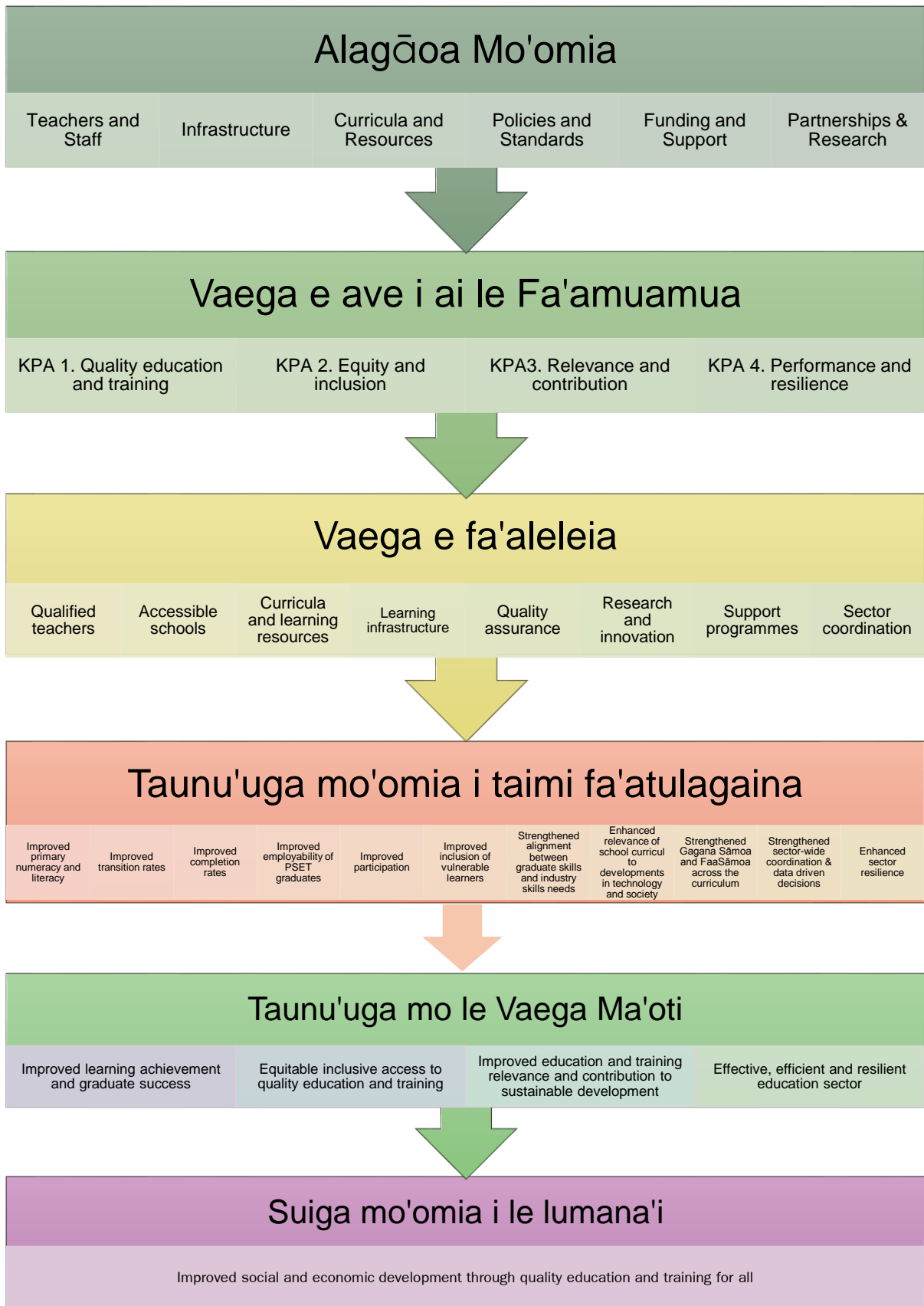
## Fa'amuamua a le Fuafuaga o A'oa'oga 2025-2030



I le isi lima tausaga aga'i i luma, e fa(4) fa'amuamua ua fuafuaina mo le Vaega o A'oa'oga. E tofu le sini autū ma lona taunu'uga e pei ona tu'uina i le siata o i luga. E feso'otai uma sini autū ma e fa'atinoina i vaega uma o a'oa'oga. E tele galuega fa'atino e fesoasoani i le ausia o sini autū.



# Fa'avae o Suiga



# SINI 1: A'OA'OGA OLOULA MA FA'ATUFUGAGA

## Taunu'uga Mo'omia 1: Fa'aleleia o taunu'uga mo a'oa'oga ma taunu'uga mo e fa'au'u

O le vaega o le a tu'u i le tūlaga fa'amuamua le fa'aleleia o le ausiaina o a'oa'oga ma taunu'uga mo e fa'au'u i vaega uma o a'oa'oga. E aofia ai le fa'aleleia o le tūlaga lelei o le a'oa'oina, fa'amālosia le pūlega ma le ta'ita'iga o ā'oga ma fa'alapotopotoga, ma le fa'amālosia o si'osi'omaga lagolagoina, ma mautū i puna'oa, ma le va'ai toto'a i le soifua manuia o faiā'oga ma tamaiti ā'oga.

### Ta'iala

**Ta'iala 1** Fa'amālosia ma taofi faiā'oga e iai tomai ma le poto ma le aufaigaluega lagolago i le a'oa'oina.

O le a'oa'oina, atina'eina ma le taofia o faiā'oga e iai tomai ma le poto, o faia fa'atonuga ma le aufaigaluega lagolago i le a'oa'oina e tūa mo le ausiaina o a'oa'oga a tamaiti ā'oga ma taunu'uga mo e fa'au'u. O auala e lagolagoina ai le taofi o faiā'oga, e aofia ai le fa'avaeina o se alāfua manino mo e faigaluega, tofogi talafeagai ma auala e lagolagoina ai le soifua manuia o faiā'oga. O le fa'au'u pea o le fa'atinoina o le Fa'atonufofua o Atina'e Faiā'oga Fa'alotoifale e tūa mo le manuia o leni faiga fa'avae, e lagolagoina ai le ausiaina o a'oa'oga o tamaiti ā'oga ma le manuia o e fa'au'u.

**Ta'iala 2** Fa'amālosia ma lagolagoina le pūlega ma le ta'ita'iga o ā'oga/fa'alapotopotoga ia una'ia tamaiti ā'oga e ausia sini autū ma le manuia o e fa'au'u.

O ta'ita'iga o ā'oga ma a'oa'oga o lo'o fa'asino i le ausia e tamaiti aoga ma le manuia o e fa'au'u. O le a aogā i le pūlea o fa'agasologa o le a'oa'oina i le tulaga o ā'oga ma fa'alapotopotoga ma fa'agāoioi puna'oa ma le lagolagosua a le nu'u mo leni fa'amoemoe.

**Ta'iala 3** Fa'amālosia ma tausia si'osi'omaga o ā'oga ma a'oa'oga e lagolagoina ai le ausiaina sini autū o tamaiti ā'oga ma le manuia o e fa'au'u.

O si'osi'omaga o le a'oa'oina fa'aletino ma fa'atekonolosi e tūa mo le ausiaina o tamaiti ā'oga ma le manuia o e fa'au'u ma le soifua manuia ma le saogalemū o tamaiti ā'oga. E aofia ai le va'aia o vai, tumamā ma tulaga o le soifua mālōlōina mo ā'oga ma fa'alapotopotoga e lagolagoina ai le soifua manuia o tamaiti ā'oga ma le ausiaina o a'oa'oga.

**Ta'iala 4** Fa'amālosia faiga fa'apā'aga i le va o ā'oga ma fa'alapotopotoga, nu'u ma pā'aga, e lagolagoina ai le ausiaina sini autū o tamaiti ā'oga ma le manuia o e fa'au'u.

O faiga fa'apā'aga i le va o ā'oga ma fa'alapotopotoga ma o latou nu'u e tūa mo le lagolagoina o le ausiaina o tamaiti ā'oga ma le manuia o e fa'au'u.

**Ta'iala 5** Fa'atino le lagolago e fa'asino mo i latou o a'oa'oga o lo'o lamatia (e aofia ai tamaiti ā'oga e iai mana'oga tumau) e lagolagoina ai le ausiaina o le faitautusi ma le numera.

E tatau ona tu'u i le tulaga fa'amuamua le lagolago i le faitautusi ma le numera, e fesoasoani ai i le unai'a o le fa'aleleia i le ausiaina sini autū o a'oa'oga i vaega uma, i vaega-fa'atino uma. O manuia ma lu'itau o polokalame faitautusi ma numera talu ai e mafai ona avea ma tulaga amata mo le manuia o galuega fa'atino e fetau ma leni faiga fa'avae.





**Ta'iala 6** Atina'e ma fa'atino polokalame o le soifua manuia o tamaiti ā'a'oga e lagolagoina ai le ausiaina sini autū o a'oa'oga.

O polokalame o le soifua manuia o tamaiti a'oga o le a fa'amalosia ai le auai o tamaiti ā'oga ma lagolagoina ai le ausiaina o sini autū o a'oa'oga. E aofia ai polokalame e lagolagoina ai le soifua mālōlōina fa'aletino (fa'ata'ita'iga, ta'aloga ma taumafa lelei), soifua mālōlōina o le mafaufau ma lagona, lagolago fa'amatā'upu ma le soifua manuia fa'aleaga feso'otai (fa'ata'ita'iga, lagolago a tupulaga lava latou ma le tete'e fa'asoesā).

**Ta'iala 7** Fa'aaogā fa'amatalaga o fuataga a ā'a'oga ma le atunu'u e una'i ai galuega mo'omia vave, fa'asino mo le fa'aleleia o le ausiaina o sini autū o tamaiti ā'oga ma taunu'uga mo e fa'aā'u.

O le auili'iliina o fa'amatalaga o fuataga a ā'a'oga ma le atunu'u e tu'uina atu ai fa'amatalaga fa'asauni i le fa'atinoga o tamaiti ā'a'oga e fa'atusa i a'oa'oga e tatau ona fa'amoemoeina ma fa'aalia vaega o lo'o leiloa i a'oa'oga e ao ina taulima e ala i galuega fa'atino e fa'amālamalama e su'esu'ega. E mautinoa ai o galuega fa'atino e lagolagoina ai le ausiaina sini autū o a'oa'oga a tamaiti ā'oga ma le manuia o e fa'a'u, e lagolagoina e fa'amatalaga fa'avae fa'amaonia e vave tu'uina atu.

**Ta'iala 8** Fa'aaogāina o tulaga maualalo o le oloula ma au'aunaga lelei i vaega uma mai le ECE i le PSET.

O le fa'aaogāina o tulaga maualalo o le oloula mo au'aunaga lelei i vaega uma mai le ECE i le PSET e mautinoa ai le ausia o fa'amoemoe maualalo mo faiā'oga lelei, matā'upu a'oa'oina ma fuataga, tu'uina atu, atina'e tetele, si'osi'omaga o le a'oa'oina, tamaiti ā'oga ma lagolago isi a'oa'oga atoa ai ma isi isi tulaga e talafeagai. O le fa'avaeina ma le tausia o tulaga maualalo o le tulaga lelei mo le a'oa'oina e fesoasoani e mautinoa ai le ausiaina o a'oa'oga a tamaiti ā'oga ma le manuia o e fa'au'u.



## SINI 2: AVANOA TUTUSA MA SAUO'O

### Taunu'uga Mo'omia 2: Ia iai avanoa tutusa, ma sau'o tagata i a'oa'oga oloula.

O le taula'i i avanoa tutusa e fa'ailoa ai o tagata uma o lo'o a'oa'oina e tusa lava po o a o latou tupuaga, tausaga po o tulaga, e iai se avanoa tutusa e maua ai a'oa'oga ma a'oa'oina lelei ma ausia le manuia i le a'oa'oina. A'o le manatu o le tutusa e fa'asino lautele i le sa'o, o le manatu o le sau'o e va'ai i vaega uma i a'oa'oga e "fa'ailogaina o tagata lamatia, tupulaga ma tagata matutua, ma taofia ai i latou mai a'oa'oga pe tu'uese i ai". O vaega fa'apenā e aofia ai mana'oga tumau fa'aletino ma fa'a-a'oa'oga, mativa, tulaga fa'aleā'iga, nofoaga, itūpa ma tomai i le gagana.

### Ta'iala

#### **Ta'iala 9** Fa'amālosia le auai o tamaiti i tausaga e tatau ona a'oa'oina (4-16 tausaga)

O a'oa'oga fa'amālosia i Sāmoa e amata mai le 4 tausaga e oo ile 16 tausaga. O galuega fa'atino e ono aofia ai, o le fa'amālosia o le ECE e fa'aleleia a latou le resitala, fa'ata'ita'iga e ala i le fa'alautele o ā'oga tulagalua e aofia ai se vasega ECE, fa'apea ma le lagolagoina o nofoaga ECE o lo'o i ai. A'o maualuga ai le resitala o ā'oga tulagalua i le 97%, e iai le avanoa e fa'aleleia ai le resitala i ā'oga maualuluga (72%), lea e matuā maualalo mo tama nai lo'o teine. O galuega fa'atino e lagolagoina ai lenei fuafuaga e ono aofia ai le galulue ma nu'u, o 'āiga ma fono a nu'u, ma le fa'aleleia o auala o a'oa'oga – lea e taumafai atili i ai se fuafuaga ese.

#### **Ta'iala 10** Fa'amālosia faiga fa'avae mo le aofia/sau'o lē fa'aituau i vaega uma o a'oa'oga

E toe fa'aopoopo atu i le fa'atinoina o le Faiga Fa'avae o A'oa'oga Aofia mo Tamaiti ā'oga e iai Mana'ogaTumau, e ono manatu le vaega o a'oa'oga i se faiga fa'avae lautele e lagolagoina ai le lē fa'aituau ma le sau'o i vaega uma o a'oa'oga, ma fa'atinoina ai le mālamalama lautele o le aofia. O fetu'unaiga talafeagai mo tamaiti ā'oga e iai mana'oga tumau o le a va'aia i lalo o lenei fuafuaga, fa'atasi ai ma auala ma fa'atulagaga o lo'o iai. O galuega fa'atino e ono aofia ai a'oa'oga mo e fesoasoani i faiā'oga ma faiā'oga ECE i le fa'ailoaina, lagolagoina ma auala e fautuaina mo tamaiti ā'oga e iai mana'oga tumau.

#### **Ta'iala 11** Fausia auala fesuia'i o le a'oa'oina ma fa'ailoga e lagolagoina ai le a'oa'oina i le olaga atoa, e aofia ai le fa'amālosia o le TVET i ā'oga ma le lagolagoina o le STEM (Saienisi, Tekonolosi, Inisinia ma le Matematika).

O faiga fa'apā'aga ma galuega fa'atino e lagolagoina ai auala fesuia'i o le a'oa'oina ma fa'ailoga mai a'oa'oga fa'amālosia, i a'oa'oga ma a'oa'oina fa'atele o le a lagolagoina le aofia o tagata uma o lo'o a'oa'oina e tusa lava po o a a'oa'oga sa maua muamua ma tūlaga ma fa'aleleia le auai i le PSET. O le fa'amālosia o le TVET i ā'oga o le a fa'aleleia ai le ala i le TVET mai ā'oga i le PSET, lea ua iai le tele o tupe ua fa'atupeina i le TVET e lagolagoina ai le atina'eina o tomai mo galuega. O auala fesuia'i e aofia ai auala fesoasoani mo tamaiti ā'oga ua tu'ua le ā'oga ae le'i fa'amā'ea le Tausaga 12 e fa'aaauu ma fa'amā'ea le ā'oga maualuga, ina ia tele ni latou filifiliga e maua ai tomai mo galuega.

#### **Ta'iala 12** Fa'amaualalo tuaoi o tofogi mo tagata a'oa'o lamatia, e ala i sikolasipi ma isi auala e lagolagoina ai tupe



E mafai ona toe iloiloaina auala e lagolagoina ai tupe ma sikolasipi o lo'o iai mo le lelei, o'gatusa ma le a'afiaga ma fa'aaauau e lagolagoina ai avanoa ma le sau'o o i vaega uma.

**Ta'iala 13** Fa'aofi tekonoosi e lagolagoina ai avanoa tutusa i a'oa'oga lelei mo tagata uma

E aofia ai lagolago mo puna'oa ma t'olaga o a'oa'oga fa'atekonolosi e fa'amauualalo ai le va'ai fa'atekonolosi, lagolagoina a'oa'oga mo tamaiti a'oga e iai mana'oga tumau ma suia a'oa'oga ua ausia i vaega STEM.

**Ta'iala 14** Fa'avae faiga pa'aga lelei i le vaega atoa ma vaega ese'ese e taulima ai tuaoi o a'oa'oga i le ausia o sini autu o a'oa'oga

O le taulimaina o tuaoi i le ausia o sini autu o a'oa'oga ma le manuia o tamaiti a'oga e masani ona aofia ai pa'aga e ese mai a'oga, faia'oga ma matua. O faiga pa'aga i le vaega atoa ma vaega ese'ese e mana'omia e taulima ai mat'upu e a'afia ai le ausia o a'oa'oga, e pei o le soifua maloloina ma taumafa, tu'uese, mativa ma sauaga fa'afeusua'i. O faiga pa'aga i vaega ese'ese e aofia ai galulue ma le vaega o le soifua maloloina ma le nu'u, vaega o ta'aloga ma isi pa'aga e feso'ota'i.



## SINI 3: A’OA’OGA TALAFEAGAI MA SAO I LE ATINA’EINA O SĀMOA

### Taunu’uga Mo’omia 3: Fa’aleleia le talafeagai o a’oa’oga ma sao i le atina’e tumau o Sāmoa

O le fa’aaauu ona taula’i le va’ai a le Vaega i le fa’a mautinoa ai o a’oa’oga e talafeagai i le atina’eina tumau o Sāmoa. E aofia ai le mautinoa o le talafeagai o mataupu a’oa’o o a’oa’oga, fa’ailoga, manaoga o maketi o galuega ma lu’itau o le soifua’aga i le atunu’u E matuā tāua foi le Gagana Sāmoa ma le aganu’u ma faiga pā’aga o su’esu’ega i le una’ia o faiga fou ma le taulimaina o matā’upu i le lotoifale ma le lalolagi.

### Ta’iala

**Ta’iala 15** Atinae se si’osi’omaga fesoasoani mo le atina’eina o tomai fou e fetai ai ma mana’oga o maketi o galuega

O a’oa’oga fa’amālosia mo tamaiti e 4-16 tausaga tu’ufa’atasi ai ma le faiga o le vasega fa(4) o ā’Ā’oga mauuluga e fa’apea ai ua tele tamaiti sefululima tausaga i le atunu’u atoa e leai se filifiliga ae na’o le sa’ilia o galuega pe galulue i fa’atoaga, pe a mā’ea le Tausaga 12. E iai le avanoa mo le vaega-fa’atino o le PSET e una’ia le atina’eina fou o tomai e lagolagoina ai tupulaga i galuega pe o galuega e maua ai tupe mo le atina’e fa’aaauu.

**Ta’iala 16** Ia mautinoa le talafeagai o matā’upu a’oa’oina ma fa’ailoga e ala i le iloiloga ma fa’afouga i taimi fa’atapula’a o matā’upu a’oa’oina ma puna’oa mo le a’oa’oina

O iloiloga i taimi fa’atapula’a o matā’upu a’oa’oina ma fa’ailoga e mana’omia ia mautinoa e talafeagai i suiga i tekonoosi ma le lalolagi ma taulima ai lu’itau o lo’o tutupu i le lalolagi e pei o suiga o le tau, tapena ma tali atu i mala fa’alenatura ma isi lu’itau o lo’o tutupu. O le atina’eina ma le tufatufaina o puna’oa talafeagai mo le a’oa’oina e lagolago ai le tu’uina atu o matā’upu a’oa’oina ma fa’ailoga o le a avea ma galuega fa’atino tāua e lagolago ai lena fuafuaga.

**Ta’iala 17** Fa’atino le fa’atonufofou o faiga fa’avae o le Aganu’u i A’oa’oga ma le Fa’atonufofou o le Gagana Sāmoa

O le aganu’u ma le gagana o pou tāua e amanaia i totonu o nuu po’o tagata uma ma e tatau ona fa’aaauu ona tu’u i le tulaga fa’amua i vaega uma o a’oa’oga a Sāmoa ma matā’upu a’oa’oina atoa o ā’Ā’oga. O le fa’atinoina o le Fa’atonufofou o Aganu’u, Faiga Fa’avae o Aganu’u i A’oa’oga ma le Fa’atonufofou o le Gagana Sāmoa o le a fa’amālosia ai le tāua ma le amanaia o le vaega o a’oa’oga ma le sao i le atina’e fa’aaauu o Sāmoa.

**Ta’iala 18** Galulue fa’atasi i le vaega atoa i su’esu’e, fa’atino ni faata’ita’iga ma fa’atino auala fou mo le a’oa’oina e aofia ai ma le tu’ufa’atasi ma le ICT, e fa’aleleia ai le ausia o sini autū o tamaiti ā’Ā’oga ma le manuia o e fa’au’u.

E iai le avanoa mo faiga pā’aga o su’esu’ega i le vaega atoa e lagolagoina ai taunu’uga ma faiga fou a le vaega o a’oa’oga. O avanoa e aofia ai le su’esu’eina ma le fa’aaogāina o le mālosi’aga o fa’amatalaga ma tekonoosi o feso’ota’iga e lagolago ai le a’oa’oina lelei. Fa’ata’ita’iga, e ala i le maua o puna’oa fa’amatalaga lautele ma le fa’atupuina o puna’oa mo le a’oa’oina e talafeagai i le aganu’u. O le vave tupu o le AI (Atamai Fa’atekonolosi) ma lona a’afiaga i auala e a’oa’o ai tamaiti ā’Ā’oga ma e tatau ona fuatia, ma mālamalama ato’atoa i ai.





O lu'itau o le faiga o a'oa'oga i a'oa'oga ua ausia (fa'ata'ita'iga, a'oa'oga ua ausia i le matematika) ma le auai (e pei o le maualalo o le auai o tama i A'oga maualuga) e mana'omia le auala a pa'aga uma ma una'ia e su'esu'ega ma'losi ma faiga pa'aga i le vaega atoa. E tatau ona avea fai'a'oga ma ta'ita'i a'oga ma vaega o le au su'esu'e, e lagolago ai le feso'ota'i sa'o i le va o su'esu'ega ma fa'atinoga i totonu o potu a'oga.



## SINI 4: FA'ATINOGA A LE VAEGA MA LE FETU'UNA'IGA O GALUEGA

**Taunu'uga Mo'omia 4: O se Vaega o A'oa'oga e ato'atoa ana fa'atinoga, ma vave ona fetu'una'i ana galuega**

O le taula'i a le Vaega o le fa'aleleia o ana galuega fa'atino, i le va'aiga lea i le ā'ogā o fa'atinoga, lelei le fa'asoasoina o alagāoa ma lelei le fetu'una'iga o ana galuega e tali atu i lu'itai o le taimi nei ma le lumanai. E aofia ai le fa'aleleiga o pūlega, fa'amālosia le fai o fa'aiuga fa'avae i fa'amaumauga ma atina'eina o tomai i vaega uma o le fa'atinoga o ā'ā'oga ma a'oa'oga.

### Ta'iala

**Ta'iala 19** la maopoopo le fa'atulagaina o faiga fa'avae tau a'oa'oga ma le pūlega o le vaega

E fa'aleleia ai le lelei ma le aogā o le vaega atoa, e iai le avanoa mo le vaega e malilie i se auala mo le atina'eina o faiga fa'avae fa'apolua e a'afia ai le vaega atoa. O ni vaega o se faiga ua malilie i ai, e ono aofia ai fautuaina i le vaega atoa, fuataga o le ā'afiaga o faiga fa'avae, o se mea e maopoopo ai faiga fa'avae tau a'oa'oga ma galulue fa'atasi i le iloiloga o faiga fa'avae. O galuega fa'atino e ono aofia ai foi le taulimaina o ni isi o fautuaga o le lipoti o le iloiloga o le pūlega o le vaega o a'oa'oga 2022.

**Ta'iala 20** Fa'atino auala e fafoe ai ma fa'atulagaga mo le fa'aaogāina o fa'amatalaga ma le fa'atulagaina o su'esu'ega e lagolagoina ai taunu'uga o le vaega o a'oa'oga.

E iai le avanoa e malilie ai i le fa'asoa o fa'amatalaga ma fa'amālosia le fa'atulagaina o su'esu'ega e lagolagoina ai taunu'uga o le vaega o a'oa'oga ma le lipotiina lelei o le fa'atinoga o le vaega o a'oa'oga.

**Ta'iala 21** Atia'e tomai mo le ta'ita'iga ma le pūlea ma fa'aaauu i totonu o le vaega o a'oa'oga.

O le manuia o le vaega o a'oa'oga e mana'omia ai le va'ai tumau i suiga lelei o ta'ita'iga ma tomai tau pūlega e ala i atina'e faapitoa fa'apolofesa ma feso'otaiga. O le atinaeina o se fuafuaga mo le atinaeina o tomai a le vaega sa fa'amā'ea i le ESP talu ai, e fautuaina ai le fa'amālosia o galuega fa'atino e mafai ona fa'atino i le ESP 2025-2030. O galuega fa'atino e ono aofia ai polokalame fa'asino mo le atina'eina o tomai mo le fa'atinoina ma le pūlega i totonu o ofisa o le vaega, fa'apea ma le aufaigaluega o le vaega.

**Ta'iala 22** Fa'amālosia le tu'uina atu o tala o tupe mo le fa'aleleia o taunu'uga o le vaega o a'oa'oga

O le tu'uina atu o tala o tupe e tūa mo le mautinoa o puna'oa tau a'oa'oga e fa'aaogāina lelei ma aogā e lagolagoina ai taunu'uga o le vaega. O galuega fa'atino e ono taula'i i le fa'ateleina o le a'afiaga o tupe fa'aalu i a'oa'oga, e ala i le fa'asoa ma le lipoti'ina lelei ā'oga, ma fa'amaualalo le pasene o tupe e le o fa'aaogāina atoa.

**Ta'iala 23** Fa'aleleia le tomai o le vaega o a'oa'oga e fa'atumau ai avanoa o a'oa'oga ma le tulaga lelei i taimi o mala fa'alenuma po ni fa'alavelave.

O galuega fa'atino e aofia ai le va'ai tumau i le lagolagoina o le tapena o faiā'oga, ā'ā'oga, fa'alapotopotoga ma ofisa tau a'oa'oga e tali atu i fa'alavelave i a'oa'oga. O le fa'avaeina o fuafuaga aā'ā'oga mo le fa'afoega o mala fa'alenuma mo ā'oga ma fa'alapotopotoga, ma le



fa'atinoina ā'oga i taimi o mala fa'alenua po ni fa'alavelave, o le a lagolagoina ai le mafai ona toe fa'atulaga o le vaega o a'oa'oga.

**Ta'iala 24** Fa'amālosia le silafia lautele e ala i feso'ota'iga, fa'asalalauga ma isi galuega fa'alauiloa mo le silafia lautele.

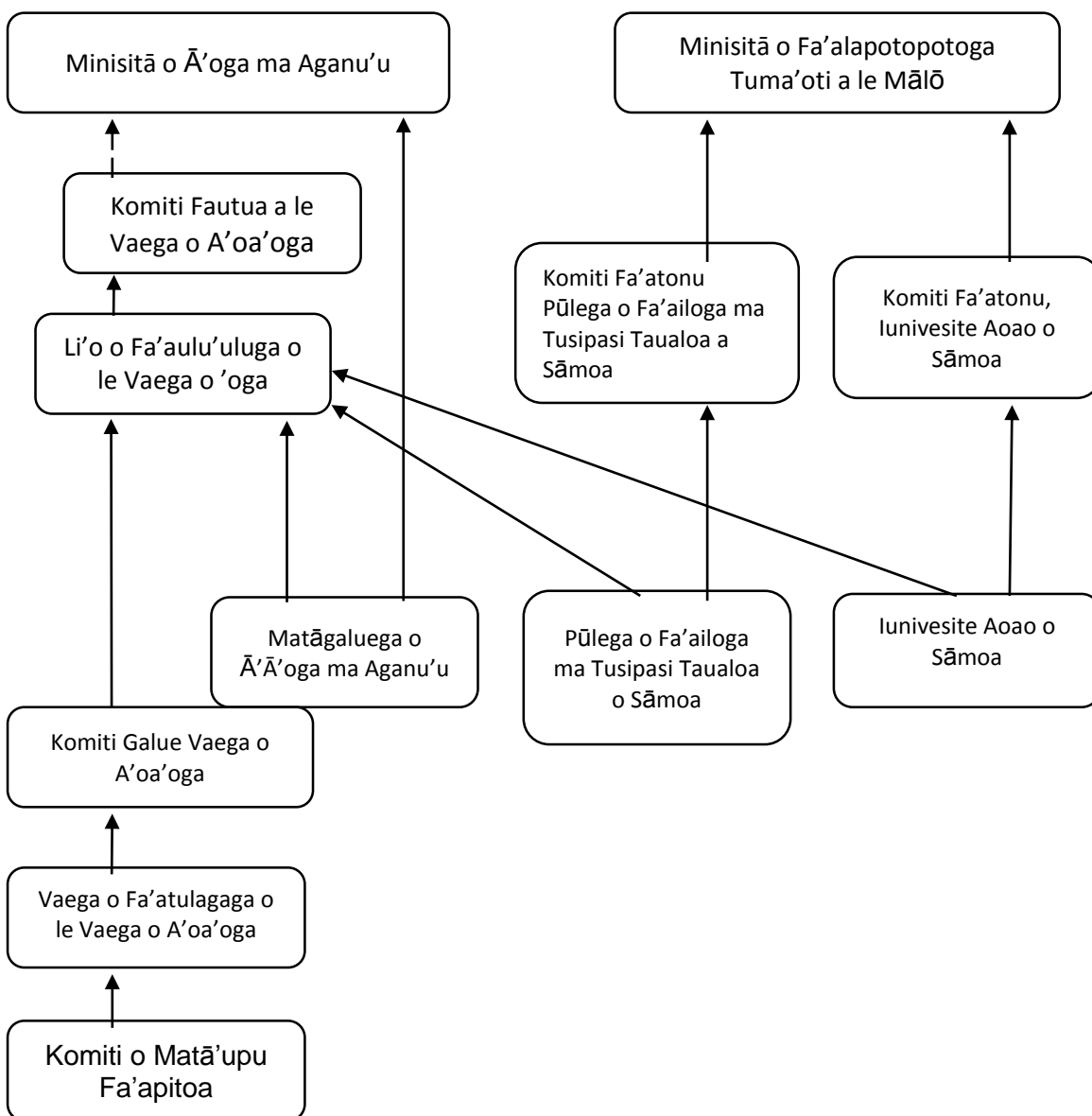
E lagolagoina ai le mālamalama o le nu'u i faiga fa'avae tau a'oa'oga ma le silafia o galuega fa'atino i le vaega atoa, e tāua le fa'alauiloa le silafia lautele e ala i feso'ota'iga, fa'asalalauga ma isi galuega fa'atino. O auala ese'ese o feso'ota'iga e pei o fa'asalalauga fa'atekonolosi e mafai ona fa'aaogāina e maua ai isi vaega. O feso'ota'iga, fa'asalalauga ma le silafia lautele o se fesoasoani e ausia ai taunu'uga o le vaega o a'oa'oga.



# Fa'atulagaga ma le Fa'afoega o le Vaega Ma'oti

O le lipoti o iloiloga ile 2022<sup>1</sup> o pūlega o le Vaega o A'oa'oga na fa'ailoa ai lu'itau ma vaega e tatau ona fa'aleleia i le fa'atinoga o pūlega o le vaega o a'oa'oga. O le a fa'aaauu pea galuega a le Vaega o A'oa'oga e ala i le galuega a le Vaega o Fa'atulagaina o le Vaega o A'oa'oga, o galuega faufautua a le Komiti Fautua a le Vaega o A'oa'oga, i lalo a le va'aiga o le Li'o o Fa'aulu'uluga o le Vaega o A'oa'oga.

O le siata o lo'o i lalo o lo o fa'amanino ai le fa'atulagaga o pūlega mo le Fuafuaga a le Vaega o A'oa'oga 2025-2030.



<sup>1</sup> MEC, NUS, SQA. (2022). Review of Education Sector Governance Arrangements. Malifa, Sāmoa .



# Fa'atonufofau mo le Fa'aaogāina o Tupe (FFT)

## Aotelega

O le FFT o le fuafuaga lea mo le fa'atupeina o galuega o le FVA 2025-2030. E lima tausaga o lenei fuafuaga ma e ono i ai ni fetu'una'iga mai lea taimi i lea taimi ona o ni suiga tetele i faiga fa'avae po'o suiga mo'omia ona o ni isi tulaga e alia'e mai i le taimi e fa'atino ai galuega. O fa'aiuga mo le fa'aaogāina o tupe e iai a'afiaga i tausaga e tele, e alagātatau ai ona fua i alagāoa e maua i totonu o se vaitaimi pu'upu'u.

O le Fa'atonufofau mo le Fa'aaogāina o Tupe o le FVA 2025-2030 ua fausia mai fa'amaumauga ma fa'amatalaga:

- I le Ta'iala mo le Atina'eina o Sāmoa (PDS);
- O le fa'amaumauga a le vaega ma'oti I le 5 tausaga ole FVA 2019-2024 i Tala Fa'atatau o le Tupe ma lipoti
- O tusi ta'iala mo le Fausia o Fuafuaga mo Vaega Ma'oti ma le tusi ta'iala o le Fa'atonufofau mo le Mata'ituina, Lauliliuina ma Ripoti;
- Tau o galuega, fa'amuumua ma ta'iala mai le FVA 2025-2030;

O tala fa'ata'ita'i o le aotelega o le tau atoa mo le FVA 2025-2030, o lo'o atagia ai le si'itia o le mana'oga o fa'alapotopotoga ma i latou o le a fa'atinoina galuega aua fa'amuumua ua tusi lima i ai. E latalata i le 100% o le tau aofai o le FVA 2025-2030 o lo'o fa'aagaga mo atina'e ao taumafai le vaega ma'oti e tu'ufa'atasi alagāoa mo le galuea'ina o le FVA ia ausia fa'amuumua ma le fa'aaogāina o le aufaigaluega.

## Ata o le Fa'atupeina o le FVA 2025 – 2030 i lona Aotelega

Ua tu'uina atu I le Siata 1 ma le 2 le tau fa'ata'ita'i o le fa'atupeina o le Fuafuaga o le Vaega Ma'oti o A'oa'oga 2025 -2030 mai le Mālō Sāmoa i tausaga fa'aletupe ta'itasi ma fa'alapotopotoga o le tafatolu.

*Siata 1. Tau Aofa'i o le Fa'atupeina o le FVA 2025-2030 e le Mālō Sāmoa i tausaga Fa'aletupe ta'itasi*

	2025 - 26	2026 – 27	2027 - 28	2028 - 29	2029 -30
Fua Fa'atatau Atoa o Tupe Fa'atupeina <sup>2</sup>	208,229,138	214,476,012	220,910,292	227,537,601	234,363,729

<sup>2</sup> Paketi Faaletausaga a le Mālō e aofia ai ma tupe lagolago mai fafo.



Siata 2. Tau Aofa'i mo Fa'alapotopotoga Ta'itasi<sup>3</sup> mo tausaga e lima

	2025 – 26	2026 – 27	2027 – 28	2028 -29	2029 -30
<b>MEC</b>	153,255,057	157,852,709	162,588,290	167,465,939	172,489,917
<b>NUS</b>	36,117,239	37,200,757	38,316,779	39,466,283	40,650,271
<b>SQA</b>	18,856,841	19,422,547	20,005,223	20,605,380	21,223,541
<b>Aotelega<sup>4</sup></b>	208,229,138	214,476,012	220,910,292	227,537,601	234,363,729

O le fua fa'atatau o tupe a le Vaega mo le ESP i le TF2025-26 e \$153.2 miliona. E fa'avae lea i tupe fa'aalu o le tausaga fa'aletupe talu ai e \$147 miliona, fa'atasi ai ma le si'itia e 41% e tali atu ai i le tau o le fa'atinoina o Ta'iala mo le tausaga amata o le ESP 2025-2030. E fa'aaogā foi le fuafuaga lea mo tausaga o lumanai o le ESP.

O fua fa'atatau mo tausaga fa'aletupe i le lumanai TF2026-27 i le TF2029-30, o lo'o fuafua ma le fa'aete'ete i suiga e ono tutupu mai i le tulaga o le tamāoā'iga o le lalolagi ma fesuiā'iga ese'ese o fuafuaga, atoa ai ma le fa'aaogā o le evalesi (average) o le Consumer Price Index (CPI) e 3% i le tausaga.

I le tūlaga o Vaega Fa'atino o le Vaega o A'oa'oga, o le aotelega o tupe mo le MEC mo le TF2025-26 i le TF2029-30 e aofia ai ana tau mā'sani mo le fa'atupeina o faiga fa'avae o taimi nei fa'atasi ai ma faiga fa'avae fou mo fuafuaga fa'atino mo le ESP2025-2030. O lenei fua fa'atatau o tupe fa'atulagaina o le a si'itia mai le \$153.2 miliona mai le TF2025-26 i le \$172.5 miliona i le TF2029-30. O le SQA ma le NUS, e fa'avae i le fua fa'atatau lava lea e tasi, o le a va'aia foi le si'itia mai le \$18.8 miliona i le \$21.2 miliona mo le SQA ma mai le \$36.1 miliona i le \$40.7 miliona mo le NUS mo le vaitaimi o tausaga fa'aletupe o le ESP2025-2030.

## Tau Fa'ata'ita'i o le FVA 2025-2030 i Vaega e Fa o le Vaega Ma'oti

O se va'aiga lea i le tau aofa'i e mo'omia mo vaega nei e fa: ā'oga amata, Ā'oga Tulagalua, Kolisi ma ā'ā'oga Fa'aauau. O lo'o atagia i le Siata 3 se taumafaiga e fuafua le agai o tupe fa'aalu mo le lumana'i mo vaega ta'itasi o a'oa'oga e fa'avae i fa'amaumauga ua mafai ona maua i tupe fa'aalu. O vaega ta'itasi ua iai A'oa'oga Amata (ECE), A'oa'oga Tulagalua (Primary), A'oa'oga Mauaululuga ma A'oa'oga Fa'aauau (PSET) o lo'o fa'amatalaina i le Siata 3.

Siata 3. Tau aofa'i mo Vaega e fa lalo o le FVA 2025-2030

Education Sub-Sector	2025-26	2026-27	2027-28	2028-29	2029-30
Ā'oga Amata	11,477,965	11,976,354	12,237,195	12,506,122	12,783,386
Ā'oga Tulagalua	96,290,979	98,369,004	100,511,449	102,720,309	104,997,644
Kolisi	32,617,622	33,077,671	33,795,843	34,536,279	35,299,668

<sup>3</sup> E le o aofia ai le faatupeina o meaai a le fanau poo totogi o faiaoga o aoga tumaoti ma ekalesia

<sup>4</sup> GoS Annual Budget including external budget support financing.





Ā'oga Fa'aaauau	63,831,197	65,195,864	66,602,836	68,053,423	69,548,979
-----------------	------------	------------	------------	------------	------------

### Fua Fa'atatau o Tupe mo le Fa'atinoga o le FVA 2025-2030

O le vaevaeina o tupe i fa'amuamua pei ona fa'atulaga ai galuega mo le FVA 2025 i le 2030, o lo'o atagia ai lava le Va'aiga Taula'i a le Fuafuaga.

O se va'aiga lea i le tau aofa'i e mo'omia mo le fa'atinoga o Fa'amuamua o le FVA 2025-2030.

#### Siata 4. Fua fa'atatau o tupe mo vaega ua ave iai le Fa'amuamua o le FVA 2025-2030

Sector Priority	Yr 1 2025-2026	Yr 2 2026-2027	Yr 3 2027-2028	Yr 4 2028-2029	Yr 5 2029-2030	Aofai 2025-30	Pasene o le Aofa'i
<b>Fa'amuamua 1</b>	43,212,800	44,509,184	45,844,460	47,219,793	48,636,387	229,422,624	70.96%
<b>Fa'amuamua 2</b>	11,441,813	11,785,067	12,138,619	12,502,778	12,877,861	60,746,139	18.79%
<b>Fa'amuamua 3</b>	3,086,670	3,179,270	3,274,648	3,372,888	3,474,074	16,387,550	5.07%
<b>Fa'amuamua 4</b>	3,157,650	3,252,379.50	3,349,951	3,450,449	3,553,963	16,764,393	5.19%
<b>Aofa'i</b>	60,898,933	62,725,900	64,607,678	66,545,908	68,542,286	323,320,706	100%

#### Siata 3. Fua fa'atatau o tupe mo fa'alapotopotoga, mo le fa'atinoina o le FVA 2025-2030

	Y1	Y2	Y3	Y4	Y5	Y1-Y5	Pasene o le aofai
<b>Faalapotopotoga</b>	Fa'amuamua 1-4	Fa'amuamua 1-4	Fa'amuamua 1-4	Fa'amuamua 1-4	Fa'amuamua 1-4	Aofai	%
<b>MEC</b>	37,448,038	38,571,479	39,728,623	40,920,482	42,148,096	198,816,720	61.49%
<b>NUS</b>	14,486,565	14,921,162	15,368,797	15,829,861	16,304,757	76,911,141	23.79%
<b>SQA</b>	8,964,330	9,233,260	9,510,258	9,795,565	10,089,432	47,592,845	14.72%
<b>Aofai</b>	60,898,933	62,725,900	64,607,678	66,545,908	68,542,286	323,320,706	100%



## Pūlea, Mata'ituina ma le Lipotiina o Tupe

O le polokalame a le Matāgaluega o Tupe o lo'o mafai ona faia lipoti fa'a le masina ma lipoti fa'a le kuata e fa'atusatusa ai tupe fuafuaina ma lona fa'aaogāina. Peita'i, o'le SQA ma le NUS o lo'o fa'aaogāina ni polokalame e ese mai ma e faigata ona fa'afeso'ota'i ma le polokalme o lo'o fa'aaogāina e le MEC. O nei polokalame e le'i gaosia e fa'atino ni lipoti tau tupe pei ona fa'atulaga mo Matāgaluega a le Māiō.

O le a tapena e NUS ma le SQA ni lipoti fa'aopopo fa'atulaga i Vaega ta'itasi ma tu'uina atu i le ESCD e tapena ai le lipoti mo le ESAC. O lo'o māioio foi i le tapenaga o lipoti fa'a le tausaga, o le ā tu'uina atu e le ESCD I le ESAC tala o le tupe ma lona pūleaina i tausaga ta'itasi.

Ao fa'atinoina galuega o lo'o ave iai le fa'amuumua ma maitauina ni galuega fa'aopopo i tausaga ta'itasi, o le a toe lloilo ma fa'afou ia tau o le TTF (silasila I le Siata 4). O le a tapenaina e le VoA nei lipoti mo le silafia ina ia fai se fa'aiuga mo le fetu'una'iga i le tala fa'aopopo o le tupe.



## Mata'ituina, Fuataga ma le Toe Fuata'ina

O le faatonufofau o le mata'ituina, fuataga ma le toe fuata'ina mo le ESP 2025-2030 o le a fa'atinoina ai fa'amoemoe tāua e fa:

1. Tulimata'i fa'atinoga ma alualu i luma i fua fa'atatau tāua, mo le lipotiina i pā'aga
2. Fa'amanino fa'aiuga fa'avae i fa'amaoniga e fa'atatau i fetu'una'iga, fa'aleleia ma galuega fa'atino
3. Fa'aleleia ma fa'aauau e ala i a'oa'oina mai le fa'atinoina
4. Fa'afoga o lamatiaga ma lapataiga vave o tupu'aga fa'alavefau i fa'atinoina, o lu'itau fou ma lamatiaga e ono a'afia ai le ausiaina o taunu'uga tau a'oa'oga

O le mata'ituina, fuataga ma le toe fuata'ina o le a fa'atino e ala i fa'atulagaga nei e lagolagoina ai le ausiaina o taunu'uga mo le Vaega o A'oa'oga.

### Iloiloga Fa'aletausaga a le Vaega o A'oa'oga

O le a tu'uina atu i Ta'ita'i o le Vaega, Komiti Fautua ma pā'aga i le masina o Oketopa po'o Novema o tausaga uma, se Lipoti o le Iloiloga Fa'aletausaga (ARR). O le Lipoti Fa'aletausaga o le a aofia ai:

- Se iloiloga o le alualu i luma talu mai le ARR talu ai e aofia ai fa'amatalaga i le alualu i luma i fua fa'atatau o le MEL; au'ililiina o lu'itau fou, galuega fa'atino e fautuaina e talanoaina i le taimi o le iloiloga ma fa'afouga e fautuaina mo le faatonufofau o le MEL.
- Se lipoti tau tupe e fa'aalia ai le auala na fa'atupeina ai e le Vaega ona tupe fa'aalu. O lenei lipoti o le a fa'atusatusa le tupe sa fuafuaina ma le tupe moni na fa'aaluina i le tausaga talu ai.
- Se fa'afouga o le MTEF ma le Risk Matrix

O se vaega o le Iloiloga Fa'aletausaga a le Vaega, e tatau ona aofia ai le avanoa mo se fonotaga lea e mafai ai e Ta'ita'i o le Vaega ma o latou au pūlega ona talanoaina fetu'una'iga, fa'aleleia ma galuega fa'atino o lumana'i. O le fesoasoani lene, e mautinoa ai le alualu i luma e fa'atatau i le ausiaina o taunu'uga o le vaega o a'oa'oga. O le fa'amaoniga o toefa'asoa o le tupe e tatau ona faia vave, fa'avae i le maliaga o le Lipoti o le Iloiloga Fa'aletausaga, e tu'uina atu ai le taimi ia lava mo le fetu'una'iga lelei o galuega fa'atino ma le fa'atinoina.

E patino tonu i le faiga o le iloiloga fa'aletausaga e tatau ona fa'amanino ai le talanoaga ma le maliaga i mea e fa'aauau ona fai, mea e fa'amālosia ma mea e taofia ona fai ona e le ā'Ā'oga.

### Iloiloga Vaeloto (Mid-term review)

O le iloiloga fa'aletausaga na fa'atulagaina i le va o Oketopa ma Novema 2027 e fa'amoemoe e aofia ai se iloiloga vaeloto o le ESP 2025-30. O le a vala'auliaina pā'aga e fesoasoani i se iloiloga tu'u fa'atasi o le auala o lo'o fa'atinoina ai le ESP.

O le iloiloga vaeloto o le a taula'i i le fuaina o taunu'uga, ā'Ā'oga, ōgatusa, tutusa, ā'afiaga vaeloto, a'oa'oina mai ma le tumauina.

O le Lipoti o le Iloiloga Vaeloto e tatau ona fa'amanino ai fa'aiuga i:

- Fuafuaga ma galuega fa'atino e manaomia ni isi puna'oa/lagolago tau tupe



- Fuafuaga ma galuega fa'atino e tatau ona tu'uese ma toe fa'asoa tupe i ni isi vaega
- Fuafuaga ma galuega fa'atino e tatau ona fa'afou pe fetu'una'i mo le fetau'i lelei i taunu'uga o le vaega o a'oa'oga

## Iloiloga i le Fa'aiuga o le FVA 2025-2030

O se iloiloga i le fa'aiuga o le ESP 2025-2030 e fa'amoemoe e faia i le kuata lona lua o le tausaga lona 5 (i le va o Oketopa ma Tesema 2029). O lenei taimi o le a mafai ai e le Vaega ona aofia ai mea maua ma fautuaga o le iloiloga i ana fuafuaga mo le isi lima tausaga o le ESP.

## Lesona na maua mai i le Mata'ituina ma Fuataga

O lesona na maua mai i le mata'ituina ma fuataga e t̄ua mo le atina'e fa'aauau ma le alualu i luma i le vaega o a'oa'oga. O le mafafau i fesili nei e fesoasoani e fa'asili atu le na o le tulimata'i o fua fa'atatau i le fa'atuputupu o a'oa'oina moni ma le fa'aleleia fa'aauau i le vaega o a'oa'oga.

### *i. A'afiaga Fuafuaga*

- O l tali atu ea a tatou fuafuaga i mana'oga sili ona maualalo ma t̄ua i tagata āo'oga ma le fa'amuamua i a'oa'oga a le atunuu?
- O a ni galuega faatino o lo'o sili ona aogā i taunu'uga o a'oa'oga, aisea?
- O a ni suiga lelei o lo'o tutupu e sili atu nai lo mea o lo'o fa'aalia e fuainumera?

### *ii. Tutusa ma le Sau'o*

- O o'o o'o ea fa'aleleiga i tagata āo'oga uma, e aofia ai ma ē lima vaivai ma i latou e iai mana'oga tumau?
- O fea vaega o lo'o tumau ai va'aiga o le lē tutusa ma e fa'apefea ona tatou fō'ia?
- O le ā se silasila mai a vaega ese'ese iā tatou galuega fa'atino?

### *iii. 'Ā'oga o Puna'oa ma le Gafataulimaina*

- O lo'o tatou fa'aaogāina lelei ea a tatou puna'oa e ausia ai taunu'uga mo'omia?
- E fa'apefea ona fa'atumauina le aogā o a tatou galuega?
- O tatou tapu'eina ia agava'a i totonu o le vaega mo le fa'aauauina o fa'atinoga?

### *iv. Pūleaina Fetu'una'iga ma A'oa'oga*

- O lelei ma ato'atoa a tatou fa'amaumauga ma o a ni vaega e le o o'o iai le fa'amatalaina?
- O a mafua'aga fa'apitoa o lo'o a'afia ai a tatou taunu'uga ma fa'atinoga?
- O a ni suiga i lava'a o fa'atinoga o mana'omia ona fai?
- O fa'apefea ona tatou fa'aaofia finagalo mai faiā'oga, tamaiti aāoga, mātua, ma afio'aga?



## Fa'ailoilo Autū o Fa'atinoga

O le vaega o lo'o i lalo o le fa'ata'atiaga o le fa'avae o ta'iala mo Fa'ailoilo autū o fa'atinoga o le FVA 2025-2030

Taunu'uga Aotele 1	Fa'aleleia o taunu'uga mo a'oa'oga ma taunu'uga mo e fa'au'u				
Ta'iala	Fa'ailoilo Autū o Fa'atinoga	2022 Numera Fa'avae (sei vagana ua fa'ailoa mai)	2030 Sini Tuliloa	Taimi Fa'atino ai	Fa'apogai o Fa'amatalaga
S1-S8	KPI 1. (a) Pasene o tamaiti o le Vasega 4, vasega 6 ma le Vasega 8 ua ausia le L3 ma le L4 o le su'ega o le Gagana Peretania	Vasega 4, Gagana Peretania M: 5.1%; F: 13.7%  Vasega 6, Gagana Peretania M: 13.2%; F: 29.4%  Vasega 8, Gagana Peretania M: 99%; F: 99.6%	Vasega 4, Gagana Peretania M: 10%; F: 18%  Vasega 6, Gagana Peretania M: 18%; F: 34%  Vasega 8, Gagana Peretania M: 99%; F: 99%	Tausaga Uma	MEC Education Statistical Digest
S1-S8	KPI 1. (b) Pasene o tamaiti o le Vasega 4, vasega 6 ma le Vasega 8 ua ausia le L3 ma le L4 o le su'ega o le Gagana Sāmoa	Year 4 Gagana Sāmoa M: 13.1%; F: 28.6%  Year 6 Gagana Sāmoa M: 15%; F: 34.3%  Year 8 Gagana Sāmoa M: 99.8%; F: 99.7%	Year 4 Gagana Sāmoa M: 18%; F: 33%  Year 6 Gagana Sāmoa M: 20%; F: 39%  Year 8 Gagana Sāmoa M: 99%; F: 99%	Tausaga Uma	MEC Education Statistical Digest



S1-S8	KPI 1. (c) Pasene o tamaiti o le Vasega 4, vasega 6 ma le Vasega 8 ua ausia le L3 ma le L4 o le su'ega o le Numera	Year 4 Numera M: 6.5%; F: 11.4%  Year 6 Numera M: 9.6%; F: 15.6%  Year 8 Numera M: 99.8%; F: 99.7%	Year 4 Numera M: 11%; F: 16%  Year 6 Numera M: 14%; F: 20%  Year 8 Numera M: 99% ; F: 99%	Tausaga Uma	MEC Education Statistical Digest
S1-S8	KPI 1. (d) Pasene o tamaiti o le Vasega 4, vasega 6 ma le Vasega 8 ua ausia le L3 ma le L4 o le su'ega o le Fa'a Saienisi	Y4: 2%; M:1.4%; F: 1.8% Y6: 6%; M:4%, F: 8.2% Y8: M: 99.7%; F: 99.7%	Y4: 20%; M:20%; F: 20% Y6: 25%; M:25%, F: 25% Y8: M: 99%; F: 99%	Tausaga Uma	MEC Education Statistical Digest
S1-S8	KPI 2. (a) Pasene o tamaiti o le Vasega 12 ua ausia le L2 o le su'ega Gagana Peretania	(a) Gagana Peretania: 48% M: 37%; F: 55%	(a) Gagana Peretania: 53% M: 42%; F: 60%	Tausaga Uma	MEC Education Statistical Digest
S1-S8	KPI 2. (b) Pasene o tamaiti o le Vasega 12 ua ausia le L2 o le su'ega Gagana Sāmoa	(b) Gagana Sāmoa n: 68% M: 60%; F: 74%	(b) Gagana Sāmoa n: 73% M: 65%; F: 79%	Tausaga Uma	MEC Education Statistical Digest
S1-S8	KPI 2. (c) Pasene o tamaiti o le Vasega 12 ua ausia le L2 I le Numera	(c) Numera: 13% M: 13%; F: 12%	(c) Numera: 18% M: 18%; F: 17%	Tausaga Uma	MEC Education Statistical Digest
S1-S8	KPI 2. (d) Pasene o tamaiti o le Vasega 12 ua ausia le L2 o le su'ega Fa'asaenisi	Paiolo M: 38%; F: 39%  Kemisi M: 35%; F: 38%  Fisiki M: 72%; F: 65%	Paiolo M: 43%; F: 44%  Kemisi M: 40%; F: 43%  Fisiki M: 77%; F: 70%	Tausaga Uma	MEC Education Statistical Digest
S8	KPI 3. (a) Pasene o 'Ā'oga Amata ua ausia tulaga fa'avae mo'omia	2025, 25	70%	Tausaga Uma	MEC Annual Report





S8	KPI 3. (b) Pasene o Ā'oga a le Mālō ua ausia tulaga fa'avae mo'omia	Ā'oga Tulaga Lua 60% Ā'oga Mauualuluga 60%	Ā'oga Tulaga Lua 80% Ā'oga Mauualuluga 80%	Tausaga Uma	MEC Annual Report
S8	KPI 3. (c). Pasene o Ā'oga Fa'aauau ua ausi'a tulaga mo'omia mo resitala	100%	100%	Tausaga Uma	SQA PSET Statistical Bulletin
S8	KPI 3 (d) PASene o I latou e fa'au'u mai Ā'oga Fa'aauau ua resitala faailoga	Nuamera Faavae 2025	5% siitia mai le nuamera faavae	Tausaga Uma	SQA PSET Statistical Bulletin
<b>Taunu'uga Aotele 2</b>	<b>la iai avanoa tutusa, ma aofia uma tagata i a'oa'oga ma fa'atufugaga</b>				
<b>Ta'iala</b>	<b>Fa'aailoilo Autū o Fa'atinoga</b>	<b>2022 Nuamera Fa'avae (sei vaganā ua fa'aailoa mai)</b>	<b>2030 Sini Tuliloa</b>	<b>Taimi Fa'atino ai</b>	<b>Fa'apogai o Fa'amatalaga</b>
S10	KPI 4.(a) Si'itia le pasene fa'aauauina o ā'oga a le fanau mai le Ā'oga Amata I le Ā'oga Tulaga Lua	2025 Nuamera Fa'avae	5% si'itia mai le nuamera fa'avae	Tausaga Uma	MEC Education Statistical Digest
S10	KPI 4.(b) Si'itia le pasene o le fa'aauauina o ā'oga a le fanau mai le Ā'oga Tulaga Lua agai Ā'oga Mauualuluga	2023, 89.8%	95%	Tausaga Uma	MEC Education Statistical Digest
S10	KPI 5. Si'itia le pasene o fanau ā'Ā'oga ua lesitala mo ā'oga amata, Ā'oga Tulaga Lua ma Ā'oga Mauualuluga	2023, Ā'oga Amata: 27%; M 26%, F 28%  2023, Ā'oga Tulaga Lua: 97%; M 95%, F 98%  2023, Ā'oga Mauualuluga: 72%; M 62%, F 83%	Ā'oga Amata:: 51%; M 51%, F 51%  Ā'oga Tulaga Lua: 99%; M 99%, F 99%  Ā'oga Mauualuluga: 90%; M 80%, F 90%	Tausaga Uma	MEC Education Statistical Digest
S10	KPI 6. Si'itia le pasene o fanau ua maea Ā'oga Tulaga Lua ma Ā'oga Mauualuluga	Ā'oga Tulaga Lua: 75%; M: 71.7; F: 77.8%  Vasega 12: 65%; M: 49; F: 75%	Ā'oga Tulaga Lua: 80%M: 76%F: 82%  Vasega 12: 70%; M: 54%; F: 80%	Tausaga Uma	MEC Education Statistical Digest



S10	KPI 7. Numera of fanau e iai mana'oga tumau o le mafaufau olo'o resitala i Ā'oga ma Ā'oga Fa'apitoa	Ā'oga Tulaga Lua: 238 M: 158 F: 80  Ā'oga Mauaululuga: 17 M: 9 F: 8  Ā'oga Fa'aauau M: SQA 2, NUS 0 F: SQA 4, NUS 1  Ā'oga Fa'apitoa:	Ā'oga Tulaga Lua: 248 M: F:  Ā'oga Mauaululuga: 22 M: F:  Ā'oga Fa'aauau 5 M: F:  Ā'oga Fa'apitoa:	Tausaga Uma	MEC Education Statistical Digest, SQA Statistical Bulletin, NUS Database
S12	KPI 8. Si'itia le pasene o fanau olo'o fa'aauauina ā'oga mai le Ā'oga Mauauluga agai i Ā'oga Fa'aauau	2024 (Fa'amautinoa le Numera Fa'avae mulimuli)	5% si'itia mai le numera fa'avae	Tausaga Uma	SQA PSET Statiscal Bulletin
S12	KPI 9. Numera o mataupu TVET ua maea ona tu'ufa'atasi ma pasiaina o ni fa'ailoga aloaia mo TVET	2023, 0	5	Tausaga Uma	MEC Annual Report
S12	KPI 10. (a) Si'itia pasene o lesitala a Ā'oga Fa'aauau	2023 M 2821 F 3983	Increase 5% M 2962 F 4182	Tausaga Uma	SQA PSET Statistical Bulletin
S12	KPI 10. (b) Si'itia pasene o fanau ua maea latou ā'oga mo fa'ailoga i Ā'oga Fa'aauau	2025 Fausia le Numera Fa'avae	5% si'itia mai le numera fa'avae	Tausaga Uma	SQA PSET Statistical Bulletin
S14	KPI 11. Pasene o ā'oga ua mafai ona fa'aaogāina a'oa'oga i upega tafa'ilagi ma alagaāoa olo'o maua ai	2025, 0	50%	Tausaga Uma	MEC
<b>Taunu'uga Aotele 3</b>	<b>Fa'aleleia le talafeagai o a'oa'oga ma le sao i le atina'e tumau o Sāmoa</b>				
<b>Taiala</b>	<b>Fa'ailoilo Autū o Fa'atinoga</b>	<b>2022 Numera Fa'avae (sei vaganā ua fa'ailoa mai)</b>	<b>2030 Sini Tuliloa</b>	<b>Taimi Fa'atino ai</b>	<b>Fa'apogai o Fa'amatalaga</b>



S15	KPI 12. Pasene o fanau sa fa'au'u mai Ā'oga Fa'aauau ua maua galuega I totonu o le 6 masina	32%	50%	2027/28	SQA Tracer Study Report and PSET Statistical Bulletin
S15	KPI 13. Pasene o Fale Faigaluega o fanau mai Ā'oga Fa'aauau, ua fa'amalieina I le tomai ma le agava'a sa fa'atino ai e le tamaiti'iti galuega	92%	97	2027/28	SQA Tracer Study Report and PSET Statistical Bulletin
S16	KPI 14. Toe lloilo le ta'iala o Matā'upu mo ā'oga	2024, lloilo Ta'iala o Matā'upu mo Ā'oga Tulaga Lua	lloilo ta'iala mo matā'upu a Ā'oga Tulaga Lua ma Ā'oga Amata	Fa'a tasi i totonu o le 5 tausaga	MEC Annual Report
S16	KPI 15. Pasene o fa'aailoga o Ā'oga Fa'aauau ua mafai ona lloilo ma fa'afou i totonu o le 5 tausaga	2025 fausia le numera fa'avae	100% lloilo, tasi I totonu o le 5 tausaga	Fa'a tasi i totonu o le 5 tausaga	SQA Annual Report
S17	KPI 16. Pasene o ICH ma TCH ua mafai ona tu'u i totonu o Ā'oga ma Ā'oga Fa'aauau	2025 fausia le numera fa'avae mo A'oa'oga Fa'aleaganu'u olo'o i luga Upega Tafa'ilagi	Fausia i le 2025	Tausaga Uma	MEC (Culture Division)
S17	KPI 17. Si'itia % ole fa'aaogāina o le gagana Sāmoa I Ā'oa'oga	2025 fausia le numera fa'avae mo Sāmoa Language Use Index	Fausia i le 2025	Tausaga Uma	MEC (Sāmoa Language Commission)
S18	KPI 18. (a) Numera ta'iala fou ma ta'iala ua mā'ea ona toe lloilo	2025, 0	5	Tausaga Uma	MEC NUS SQA Annual/ Quarterly Reports
S18	KPI 18. (b) Numera o fa'alapotopotoga ua fa'aaogainā faiga fa'avae mo su'esu'ega	2025, 0	5	Tausaga Uma	MEC NUS SQA Annual/ Quarterly Reports
S18	KPI 18. (c) Numera o faiā'oga ua aoaoina i vaega o a'oa'oga fa'aaogāina ai tekenolosi	2025, 0	5	Tausaga Uma	MEC NUS SQA Annual/ Quarterly Reports



S18	KPI 18. (d) Numera o AI ua fa'amaonia I su'esu'ega e ā'oga mo a'oa'oga	2025, 0	5	Tausaga Uma	MEC NUS SQA Annual/ Quarterly Reports
<b>Taunu'uga Aotele 4</b>	<b>O se Vaega o A'oa'oga e atoatoa ana fa'atinoga, ma vave ona fetu'unai ana galuega</b>				
<b>Ta'iala</b>	<b>Fa'ailoilo Autū o Fa'atinoga</b>	<b>2022 Numera Fa'avae (sei vaganā ua fa'ailoa mai)</b>	<b>2030 Sini Tuliloa</b>	<b>Taimi Fa'atino ai</b>	<b>Fa'apogai o Fa'amatalaga</b>
S19	KPI 19. (a) Fa'amauina le fa'atinoga o faiga fa'avae a le vaega o a'oa'oga ma le iloiloina o auala e fa'atino ai	2024, 0	Fa'amaonia vaega fa'aeleia mo ta'iala ma le iloiloga o auala e fa'atino ai.	Tausaga Uma	MEC NUS SQA Annual/ Quarterly Reports
S19	KPI 19. (b) Numera o su'esu'ega tu'u'atasi a le Vaega o A'oa'oga olo'o lagoagoina taunu'uga mo'omia	2024, 0	2	Tausaga Uma	MEC NUS SQA Annual/ Quarterly Reports
S20	KPI 20. Fa'amausali le fefa'asoa'ai o fa'amatalaga ma se maliega i le va o IAs	2024, 0	Fa'atino le fefa'asoaai o fa'amatalaga / Maliega	Tausaga Uma	MEC NUS SQA Annual/ Quarterly Reports
S21	KPI 21. Pasene o sui o pūlega i totonnu o Vaega o A'oa'oga ua auai i a'oa'oga e si'itia ai le tomai ma le agava'a i galuega	2024, 0	50%	Tausaga Uma	MEC NUS SQA Annual/ Quarterly Reports
S22	KPI 22. Fa'aiti'itia le pasene o tupe e le'i fa'aaogāina pea maea le tausaga fa'a le tupe	2023,	0%	Tausaga Uma	MEC NUS SQA Annual/ Quarterly Reports
S23	KPI 23. Pasene o Ā'oga ma Ā'oga Fa'aauau ua iai fuafuaga mo fa'alavelave fa'afuase'i	2025, 0	90%	Tausaga Uma	MEC NUS SQA Annual/ Quarterly Reports
S24	KPI 24. Numera o fa'alauiloa e lagolago ai fa'amuumua a le Vaega o A'oa'oga	2025, 0	10	Tausaga Uma	MEC NUS SQA Annual/ Quarterly Reports



## Fa'atonufofau mo le Fa'afoeina o Tulaga Lamatia e ono A'afia ai le Fa'atinoina o Galuega FVA 2025-2030

E i ai suiga e ono ā'afia ai le fa'atinoina o galuega o lo'o tu'uina atu ile tatou fa'atonufofau ma e feso'otai sa'o lava i taunu'uga mo'omia mo le vaega ma'oti. Ua fa'avasegaina i suiga fa'alotoifale ma suiga i fafo atu o le tafatolu, ina ia faigofie ona fa'avasega e vaega fa'atino o a'oa'oga fa'atinoga, fa'asoasoa lelei puna'oa, ma fa'atuina se faiga fa'amautinoa manino. O le iloiloga mā'sani o a'afia i le taimi o le fa'atinoga o le a fesoasoani i le vaega e fa'afetaui lu'itau fou ma fa'atumauiina le alualu i luma i le fa'atinoga o le FVA 2025-2030. (M- maualuga; F – feololo)

	Lamatiaga fa'alotoifale	E ono tupu	A'afia	Ta'iala mo le fa'aitiitia o a'afia	Ā'afia o lamatiaga
1	Lamatiaga o le aufaigaluega ma le gafatia taulimaina. Le lava o faiā'oga, maualuga le suiga o faiā'oga, faiā'oga e tete'e i suiga po'o le atina'eina, faiā'oga e le fiafia pe le lava le lagolago.	M	E le atoa ai le fa'atinoina o galuega mo le ausia o le fa'amuumua o le FVA 2025-2030 aemaise le taunu'uga 1: si'itia o taunu'uga mo su'ega ma i latou e fa'au'u	la tosina mai ni isi i totogi maualuga, manino le tulaga e agai ai i luma i totonu o le vaega ma'oti ma lelei le soifua mā'ōlōina. la faia ni faufautua mo faiā'oga fou ma ia fausia ni vaega latou te ā'o'oga fa'atasi.	Maualuga
2	Fa'asoaina ma fa'afoeina o alagāoa Utiuti vaega tupe mo masini ma isi alagāoa pei o tusi faitau ma fa'ailo mo mu, e le tutusa le fa'asoaina o alagāoa; e le lava le tupe mo le fa'atinoina o fa'amuumua o le vaega ma'oti	F	E ono le ausia le Taunu'uga 2 ona e le o tutusa le a'oa'oga e tu'uina atu ona o alagaoa. A le lava le fa'atupeina o le FVA fou e le mafai foi ona Fa'atino fa'amuumua i totonu o le vaega ma'oti.	Fa'aauau pea alagāoa o lo'o fa'amatu'u atu i ā'oga. Tagai ile so'otaga o le maua o tupe ma le lelei o a'oa'oga i totonu o ā'oga.	M
3	O le galulue ma isi pā'aga E maualalo le fa'ataua a matua e tu'uina atu fanau i le ā'oga; e le o iai foi se fa'amamafa i nu'u e galulue fa'atasi e lagolago le ave o fanau ile Ā'oga ina ia aoaoina; e le o galulue foi le vaega ma'oti o a'oa'oga ma isi vaega ma'oti e u'unaia mātua ma nu'u e fa'atāua Ā'oga	F	E ono misi le avanoa e galulue fa'atasi ai nu'u ma mātua e lagolago taunu'uga o a'oa'oga a le fanau, talavou, ma tagata matutua	la aofia pūlega a nu'u, ekalesia ma mātua e ala l fonotaga a mātua ma faiā'oga ma fa'alauiloa. Va'ai ni tagata mai vaega ma'oti 'ese'ese e soalupule ma galulue e fa'aitiitia fa'alavelave le ave o fanau i ā'oga.	F
4	O le Pūlea ma le fa'afoeina o le poloketi E mana'omia le mālosi o le lagolago a ta'ita'i e fa'auau ma fa'afoeina le vaega ma'oti o	F	E iai a'afia i le fa'atinoina o le FVA2025-30 ma le ausia o matāti'a. E a'afia le fa'aleleia o taunu'uga o su'ega ma l latou e fa'au'u fa'atasi	Fausia ni a'oa'oga mo le tapu'eina o ta'ita'i i ofisa sinia ma ta'ita'i o ā'oga. E	M



	a'oa'oga e u'una'ia le fa'atinoina o galuega, ia taula'i ile va'ai mamao a le vaega ma'oti		ma le tulaga o le ato'aatoa ma vave fa'atinoga aemaise ia mafai ona fa'aauau au'aunaga mo se taimi umi.	tatau foi ona taga'i ise fuafuaga mo ta'ita'i o le lumanai i le vaega ma'oti.	
5	Fa'atinoina o galuega i totonu o fa'alapotopotoga E 'ese'ese le fa'atinoina o galuega aemaise fa'atulagaga o lipoti i totonu o le tafatolu	F	E a'afiaga le talitonuina o lipoti e tu'uina atu ile Komiti Faufautua ma pa'aga pe a tuai le fa'atinoina o lipoti ona o le ese'ese o auala e fa'atinoina ai lipoti	Taga'i i le fa'alaugatasia o le fa'atulagaga o lipoti aemaise se tulaga e mafai ona fa'asoa ai fa'amatalaga ma fuainumera fa'amaumuina i le va o fa'alapotopotoga o le tafatolu.	F
6	Galulue Felagolagoma'i E le galulue fa'atasi le tafatolu i fuafuaga, fausia ma le lauliliuina o faiga Fa'avae. E fiafia lava le fa'alapotopotoga ma le vaega ese'ese e galulue na o latou lava	F	E a'afia ai le ausia o le Taunu'uga 4 (An effective, efficient and resilient education sector), ma afaina ai le fa'atinoga o le Ta'iala 20 ma le 21 I tulaga o faiga fa'avae ma su'esu'ega.	Fa'atino ile tulaga ua malilie iai le tafatolu mo le fausia o faiga Fa'avae ma lona lauliliuina.	F
	<b>Lamatiaga i fafo atu o le tafatolu</b>	<b>E ONO TUPU</b>	<b>Ā'AFIAGA</b>	<b>TA'IALA MO LE FA'AITI'ITIA O A'AFIAGA</b>	<b>MALOSI OLE Ā'AFIAGA</b>
7	A'afiaga i faiga Mālō E ono suia faiga Fa'avae a le Malo ma a'afia ai vaega tupe e fa'amatu'u i ā'oga, aemaise suiga i tulafono ma tulāfono fa'atonutonu	Feololo	E tupu ai le le mautonu ma fa'aletonu ai taimi fa'atulagaina. O suiga i vaega tupe fa'amatu'u e a'afia ai taunu'uga mo'omia 2. A sui faiga fa'avae e ono ave le tupe mo aoĀ'oga i se isi fa'amuamua a le Mālō.	la fausia ni pepa o fa'amatalaga fa'atautu ile FVA 2025-30 mo tagata fou pei o Minisita po'o sui sinia o le Mālō. la iai ni feso'otaiga fa' a'auau ma le Matāgaluega o Tupe.	M
8	A'afiaga o le si'osi'omaga A tupu ni mala fa'anatura pei ole mamafa o timuga, lolo vai, motusia le eltise e ono a'afia foi le agai atu i ā'oga pe a'afia ai foi auala e mafai ona maua ai lesonea.	F	A fa'aleagaina faleĀ'oga ma le mafai ona o'o atu fanau mo aoĀ'oga e ā'afia le Taunu'uga 1, i tulaga ausia i iloiloga a le fanau aemaise i latou e fa'au'u.	la lauliliu fuafuaga a le vaega ma'oti mo le tali atu i fa'alavelave fa'afuase'i. Mautinoa o i ai alagāoa i ā'oga e fesoasoani i taimi e tupu ai fa'alavelave. la fa'aleleia tulaga o le faleā'oga ma nofoaga lata ane e mafai ona sulufa'i i ai pe fa'aaogāina mo ni isi auala e a'oa'oina ai le fanau ā'oga.	M
9	A'afiaga tau soifua mālōlōina A pepesi se fa'ama'i ile lalolagi po'o totonu o le atunu'u e ono a'afiaga ai le aga'i atu o fanau i ā'oga	F	O lamatiaga i le soifua mālōlōina e iu ile tapunia o ā'oga pei ona iai ile Koviti 19 ma le Misela 2019-2020 na a'afiaga ai Taunu'uga 1. E iai foi a'afiaga i le Taunu'uga 2 aua e sili atu le	la manino se fuafuaga mo le vave o le tali atu pe a alia'e mai se tulaga tau soifua mālōlōina. la fa'atulaga foi ni fuafuaga mo isi auala e fa'aauau ai le a'oa'oina o fanau ā'oga e aofia ai ma	F





			afaina o fanau e iai a'afiaga tumau i taimi o fa'ama'i pepesi.	auala e le mana'omia ai ni komepiuta ma telefoni.	
10	Fa'apā'aga E le lava le fesoasoani e maua mai pā'aga po'o le faigata o aiāiga mai pā'aga ele mafai ona fetu'una'i e fua i le tatou mana'oga	M	E ono fa'aitiitia alagaoa e maua mo le ausia o sini pe a fa'aitiitia le lagolago a pa'aga. A le mafai ona fetu'utu'una'i le fa'aaogāina o alagāoa e faigata foi ona tali atu i lamatiaga ma lu'itau e alia'e mai i totonu o le vaega ma'oti.	Taga'i ia tele ni pā'aga e ese mai pā'aga masani. la mautinoa e mafai ona iai se maliega i vaega e fetu'utu'unai pe a mana'omia. la faia pea feso'otaiga mautū fa'aauau ma pā'aga ia iai foi se ta'iala ma le fa'atupeina o fuafuaga.	M

## Fuafuaga mo Galuega Fa'atino o le FVA 2025-2030

FUAFUAGA MO GALUEGA FA'ATINO FVA 2025-30							
Fa'amuumua 1: TAUNU'UGA MO A'OA'OGA MA FA'ATUFUGAGA ANOA							
TAUNU'UGA AOTELE 1: Fa'aleleia o taunu'uga mo a'oa'oga ma taunu'uga mo e fa'au'u							
Fa'ailoilo Autū o Fa'atinoga							
TA'IALA	GALUEGA FA'ATINO	Yr 1 2025- 26	Yr 2 2026- 27	Yr 3 2027- 28	Yr 4 2028- 29	Yr 5 2029- 30	IAs
Ta'iala 1 Fa'amālosia ma taofi faiā'oga tomai ma poto ma le afaigaluega lagolago ile a'oa'oina.	S1A1. Fa'afaigaluegaina o faiā'oga ma auala e fa'atumauiina ai i le au'aunaga						MEC
	S1A2. A'oa'oga mo faiā'oga fa'aolioli						NUS
	S1A3. A'oa'oga mo faiā'oga						MEC
	S1A4. PSET Support Fund mo le fa'atinoina o a'oa'oga mo faiā'oga						SQA
	S1A5. Polokalame lagolago a faiā'oga mo Ā'oga Amata						SQA MEC
Ta'iala 2 Fa'amālosia ma lagolagoina le pūlega ma	S2A1. A'oa'oga fa'ata'ita'i mo puleā'oga ma vaega o pūlega						MEC



le ta'ita'iga o ā'oga/fa'alapotopotoga e ta'ita'ia ai le ausiaina o tamaiti ā'oga ma le manuia o e fa'au'u.	S2A2. A'oa'oga mo pūlega ma fa'alauiloa mo komiti o Ā'oga							MEC
Ta'iala 3 Fa'amālosia ma tausia si'osi'omaga o ā'oga ma aoā'oga e lagolagoina ai le ausiaina o tamaiti ā'oga ma le manuia o e fa'au'u	S3A1. Asiasiga ma ripoti o le Tapula'a mo Au'aunaga i Ā'oga (MSS)							MEC
	S3A2. Faufau ma le tufaina o alagāoa							MEC
	S3A3. Fa'aleleia aseta ma faleā'oga mo ā'oga							MEC
Ta'iala 4 Fa'amālosia faiga fa'apā'aga i le va o ā'oga ma fa'alapotopotoga, nu'u ma pā'aga, e lagolagoina ai le ausiaina o tamaiti ā'oga ma le manuia o e fa'au'u.	S4A1. Polokalame mo mātua ma nu'u ina ia auai uma e lagolago a'oa'oga a fanau							MEC
	S4A2 Fa'atino fonotaga ma Ā'oga Fa'aauau							SQA
Ta'iala 5 Fa'atino lagolago fa'asino mo e a'o'ao o lo'o lamatia (e aofia ai tamaiti ā'oga e iai mana'oga fa'apitoa) e lagolagoina ai le ausiaina o le faitautusi ma le numera	S5A1. A'oa'oga mo faiā'oga ma faiā'oga fesoasoani e lagolago ai fanau e iai mana'oga tumau							MEC
	S5A2. Polokalame fa'alauiloa mo le fuafuaga o le NCDIEA 2022-2025							MEC
Ta'iala 6 Atina'e ma fa'atino polokalame o le soifua manuia o tamaiti ā'oga e lagolagoina ai le ausiaina o aoā'oga.	S6A1. Fa'atino faiga fa'avae mo le saogalemū o Ā'oga							MEC
Ta'iala 7 Fa'aaogā fa'amatalaga o fuataga a ā'oga ma le atunu'u e ta'ita'ia ai galuega fa'atino vave, fa'asino mo le fa'aleleia o le ausiaina o tamaiti ā'oga ma taunu'uga mo e fa'au'u.	S7A1. Auili'iliga o ripoti mo iuga o Su'ega a le Mālō							MEC
	S7A2. Faiga fa'avae, fuafuaga, polokalame ma alagāoa e Fausia ona o iuga o su'ega							MEC
Ta'iala 8 Fa'atino tulaga mauualalo o le tulaga lelei/au'aunaga i vaega uma mai le AA i le AF.	S8A1. Si'itia le tulaga lelei o Ā'oga Fa'aauau							SQA
	S8A2. Lagolago mo Ā'oga Fa'aauau ina ia mafai ona aloa'ia matā'upu olo'o a'oa'oina ma le TVET i Kolisi							SQA/MEC
<b>FA'AMUAMUA 2: AVANOA TUTUSA MA SAU'OO</b>								
<b>Taunu'uga Aotele 2: Ia iai avanoa tutusa, ma aofia uma tagata i a'oa'oga</b>								



TA'IALA	GALUEGA FA'ATINO	Yr 1 2025- 26	Yr 2 2026- 27	Yr 3 2027- 28	Yr 4 2028- 29	Yr 5 2029- 30	IAs
Ta'iala 9 Fa'amālosia le auai o tamaiti i tausaga e tatau ona a'oa'oina (4-16 tausaga)	S9A1. Fa'alauiloa ina ia fa'amālosia le ave o fanau i ā'oga						MEC
	S9A2. Aoina o fa'amatalaga o le auai o faiā'oga i ā'oga ma fa'amatalaga o lesitala						MEC
Ta'iala 10 Fa'amālosia faiga fa'avae mo le aofia tutusa i vaega uma o a'oa'oga	S10A1. Fa'atino le faiga fa'avae mo Ā'oga Sauo'o						MEC
	S10A2. Polokalame mo le siakiina o taliga / Fa'alogo a fanau Ā'oga						MEC
Ta'iala 110 Taulima le ese'esega i le itūpa i a'oa'oga ua ausia	S11A1. Polokalame e una'ia iuga o su'ega a fanau tama i totonu o Ā'oga						MEC
Ta'iala 11 Fausia auala fesuia'i o le a'oa'oina ma fa'ailoga e lagolagoina ai le a'oa'oina i le olaga atoa, e aofia ai le fa'amālosia o le TVET i ā'oga, ma le lagolagoina o le STEM (Saienisi, Tekonolosi, Inisinia ma le Matematika).	S12A1. Fa'amalosi ma fa'alauiloa le STEM (Science, Technology, Engineering and Mathematics)						MEC NUS
	S12A2. Tapena ma fa'atino auala o a'oa'oga mai Ā'oga Mauululiga aga'i i Ā'oga Fa'aauau						MEC NUS SQA
	S12A3. O fa'alauiloa mo fanau Ā'oga i avanoa ma galuega e filifili ai mo le lumanai						NUS SQA
Ta'iala 12 Fa'amaulalo tuāoi o totogi mo tagata a'oa'o lamatia e ala i sikolasipi ma isi auala e lagolagoina ai tupe	S13A1. Polokalame sikolasipi mo fanau e iai mana'oga tumau						MEC NUS
	S13A2. Fesoasoani tau tupe mo fanau e iai mana'oga tumau						MEC NUS
	S13A3. Sikolasipi a le TVET olo'o ave i le NUS						NUS
	S13A4. Tupe fesoasoani e lagolago mo Ā'oga Fa'aauau mo i latou e iai ni lamatiaga						SQA
Ta'iala 13	S14A1. Fesoasoani fa'atekonolosi e una'ia ai a'oa'oga ma tapenaga o su'ega						MEC SQA



Fa'aofi le tekonolosi e lagolagoina ai avanoa tutusa i a'oa'oga lelei mo tagata uma	S14A2. Fa'atinoina o le WiseNet mo lesitala a fanau ā'oga						NUS
Ta'iala 14  Fa'avae faiga pā'aga lelei i le vaega atoa ma vaega ese'ese e taulima ai tuāoi e le o a'oa'oga i le ausia o a'oa'oga	S15A1. Faiga fa'apa'aga ma isi Vaega Ma'oti e fesoasoani e fō'ia fa'afitauli oloo afaina ai tulaga ausia e fanau ā'oga						MEC NUS SQA
<b>FA'AMUAMUA 3: A'OA'OGA TALAFEAGAI MA SAO I LE ATINAEINA O SĀMOA</b>							
<b>Taunu'uga Aotele 3: Fa'aleleia le talafeagai o a'oa'oga ma sao i le atina'e tumau o Sāmoa</b>							
TA'IALA	GALUEGA FA'ATINO	Yr 1 2025- 26	Yr 2 2026- 27	Yr 3 2027- 28	Yr 4 2028- 29	Yr 5 2029- 30	IAs
Ta'iala 15 Atinae se si'osi'omaga fesoasoani mo le atina'eina fou o tomai e fetai ai ma mana'oga o le maketi o galuega	S16A1. Galuega e tu'ufa'atasia ai a'oa'oga ma su'ega						NUS SQA
	S16A2. Fa'atino le su'esu'ega po'o fea ua aga'i i ai tamaiti fa'au'u atu i Ā'oga Fa'aauau						SQA
	S16A3 Fa'atino le su'esu'ega ma le saili'iliga mo Fale Faigaluega pe na fa'amalieina i au'aunaga a tamaiti fa'au'u atu i Ā'oga Fa'aauau						SQA NUS
	S16A4. Tapena ma fa'atino faiga fa'avae mo fa'amautinoaina lelei omicro-credentials						SQA
	S16A5. Tapena ma fa'amamalu le Fa'amauina lelei o le Ta'iala o Fa'atinoina ma Fa'aailoga Sāmoa						SQA
Ta'iala 16 Mautinoa le talafeagai o matā'upu a'oa'oina ma fa'aailoga e ala i le iloiloga ma fa'afouga i taimi fa'atapula'a o matā'upu a'oa'oina ma puna'oa mo le a'oa'oina	S17A1. Iloilo ma toe fa'asao le Ta'iala o Matā'upu ta'itasi						MEC NUS
	S17A2. Fa'aleleia alagāoa mo a'oa'oga						MEC NUS
	S17A3. Iloilo Fa'aailoga Aloa'ia a Sāmoa						NUS SQA
Ta'iala 17	S18A1. Polokalame fa'aleaganu'u						MEC



Fa'atino le fa'atonufofou o faiga fa'avae o le Aganu'u i A'oa'oga ma le Fa'atonufofou o le Gagana Sāmoa	S18A2. Polokalame mo le Gagana Sāmoa ma lomiga						MEC
	S18A3. Tusi Fa'afanua o talatu'u ma mata'aga fa'aleaganu'u						MEC
Taiala 18 Galulue fa'atasi i le vaega atoa e su'esu'e, fa'atagā fa'atino ma fa'atino auala fou mo le a'oa'oina e aofia ai le fa'aofi le ICT, e fa'aleleia ai le ausia o tamaiti ā'oga ma le manuia o e fa'au'u.	S19A1. Galulue fa'atasi o Vaega ma'oti e una'ia auala fou e fa'aleleia ai a'oa'oga						MEC NUS SQA
	S19A2. Su'esu'ega o auala fou mo a'oa'oga e pei o le fa'aaogāina o le AI						NUS
	S19A3. Fa'ata'ita'iga o le fa'aaogāina o auala fou pei o le AI						NUS
<b>FA'AMUAMUA 4: FA'ATINO MA FETU'UNA'IGA O GALUEGA</b>							
<b>Taunu'uga Aotele 4: O se Vaega o A'oa'oga e ato'atoa ana fa'atinoga, ma vave ona fetu'una'i ana galuega</b>							
TA'IALA	GALUEGA FA'ATINO	Yr 1 2025- 26	Yr 2 2026- 27	Yr 3 2027- 28	Yr 4 2028- 29	Yr 5 2029- 30	IAs
Ta'iala 19 Ia maopopo le fa'atulagaina o faiga fa'avae tau a'oa'oga ma le pūlega o le vaega	S20A1. Fausia auala e fa'aitno mo le fausiaina ma le iloiloina o faiga fa'avae						MEC NUS SQA
	S20A2. Ia maopopo le fa'atinoga o faiga fa'avae						MEC NUS SQA
Ta'iala 20 Fa'atino faiga ma fa'atulagaga mo le fa'aaogāina o fa'amatalaga ma le fa'atulagaina o suesuega e lagolagoina ai taunu'uga o le vaega o a'oa'oga.	S21A1. Fa'amaopopo ma le tufatufaina o luga o su'esu'ega a le Vaega Ma'oti o A'oa'oga						MEC NUS SQA
	S21A2. Fa'atinoina o le PacSIMS						MEC NUS SQA
Taiala 21 Atia'e toma'i mo le ta'ita'iga ma le pūleaina ma le fa'aauuina i totonu o le vaega o a'oa'oga	S22A1. A'oa'oga mo ta'ita'i ina ia si'itia lo latou silafia i ta'ita'iga ma pūlega lelei						MEC NUS SQA



<p>Ta'iala 22 Fa'amalosia le tu'uina atu o tala o tupe mo le fa'aleleia o taunu'uga o le vaega o a'oa'oga</p>	S23A1. Mata'ituina o le fa'aaogāina o tupe a le Vaega Ma'oti o A'oa'oga i Kuata ta'itasi						MEC NUS SQA
	S23A2. Fa'amalosia le fuafuaga ma vaega ua fa'ama'oti mo Fa'atauga						MEC NUS SQA
	S23A3. Ripoti o tupe a le Vaega Ma'oti						MEC NUS SQA
	S23A4 Mata'ituina o le Vaega tupe mo Ā'oga Fa'aaauau						SQA
<p>Ta'iala 23 Fa'aleleia le tomai o le vaega o a'oa'oga e tausi ai le maua o a'oa'oga ma le tulaga lelei i taimi o mala fa'alenua pe fa'alavelave</p>	S24A1. Fuafuaga ma polokalame mo ā'oga i taimi o fa'alavelave fa'afuasei						MEC NUS SQA
	S25A2. A'oa'oga mo faiā'oga ma le Matāgaluega o Ā'oga ma le tafatolu mo tapenaga i fa'alavelave fa'afuase'i						MEC NUS SQA
<p>Ta'iala 24 Fa'amālosia le silafia lautele e ala i feso'ota'iga, fa'asalalauga ma isi galuega fa'atino mo le silafia lautele.</p>	S25A2. Fa'alauiloa a le Vaega o A'oa'oga						MEC NUS SQA
	S25A2. Fausia ma fa'atino ta'iala o feso'ota'iga						MEC NUS SQA



## Tusi Fa'aaogāina

- Education Review Office. (2022). Sāmoa 's Education Sector Plan and the Education Sector Support Programme: A Mid-Term Review. Auckland, NZ.
- Kalua, T. (27 November 2023). UN Statement on Launch of 16 Days of Activism 2023. Sāmoa .un.org
- MEC, SQA, NUS. (2002). Review of Education Sector Governance Arrangements. Malifa, Sāmoa .
- MEC. (2022). Review of Education Sector Governance Arrangements. Malifa, Sāmoa .
- MEC. (2023a). Education Statistical Digest. Malifa, Sāmoa .
- MEC. (2023b). Gender achievement gap report. Malifa, Sāmoa .
- MEC. (2024). ECE Sub-sector Analysis Report. Malifa, Sāmoa .
- MESC. (1995). MESC Strategic Policies and Plan 1995-2005. Malifa, Sāmoa .
- MESC. (2013). Education Sector Plan, 2013-2018. Malifa, Sāmoa .
- MOF. (2015). Sāmoa Monitoring Evaluation Reporting Framework Manual. Apia. Sāmoa .
- SBS. (2022). Sāmoa Population and Housing Census 2021 Report. Apia, Sāmoa .
- SBS. (2023). Analysis of the 2018 Household Income & Expenditure Survey.  
[https://sdd.spc.int/digital\\_library/Sāmoa-hardship-and-poverty-report-analysis-2018-household-income-and-expenditure](https://sdd.spc.int/digital_library/Sāmoa-hardship-and-poverty-report-analysis-2018-household-income-and-expenditure)
- SBS. (2024). Sāmoa MICS Plus 2022-2024: Household phone survey report. Snapshot of key findings: Wave 3 Oct-Nov 2023. Apia, Sāmoa .
- SPC & SBS. (2023). Sāmoa Poverty and Hardship Report (HIES). Apia, Sāmoa .
- SQA. (2022). PSET Statistical Bulletin. Sogi, Sāmoa .
- UNESCO. (2007). Education SWAPs: Background, Guide and Lessons. Paris, France.
- UNESCO. (2020). 2020 Global Education Monitoring Report on Inclusion and Education: All means All. Paris, France.
- World Bank. (n.d.). World Bank Country and Lending Groups.  
<https://datahelpdesk.worldbank.org/knowledgebase/articles/906519-world-bank-country-and-lending-groups>





## Pepa Fa'aopoopo 1: Matāti'a o le SDG4

SDG4 Sini: Mautinoa o aofia uma/sauo'o ma tutusa avanoa mo a'oa'oga anoa mo tagata uma i so'o se taimi o le soifuaga

SDG 4 Matāti'a	Fa'ailoilo
4.1 By 2030, ensure that all girls and boys complete free, equitable and quality primary and secondary education leading to relevant and effective learning outcomes	4.1.1 Proportion of children and young people (a) in grades 2/3; (b) at the end of primary; and (c) at the end of lower secondary achieving at least a minimum proficiency level in (i) reading and (ii) mathematics, by sex 4.1.2 Completion rate (primary education, lower secondary education, upper secondary education)
4.2 By 2030, ensure that all girls and boys have access to quality early childhood development, care and pre-primary education so that they are ready for primary education	4.2.1 Proportion of children aged 24–59 months who are developmentally on track in health, learning and psychosocial well-being, by sex 4.2.2 Participation rate in organized learning (one year before the official primary entry age), by sex
4.3 By 2030, ensure equal access for all women and men to affordable and quality technical, vocational and tertiary education, including university	Participation rate of youth and adults in formal and non-formal education and training in the previous 12 months, by sex
4.4 By 2030, substantially increase the number of youth and adults who have relevant skills, including technical and vocational skills, for employment, decent jobs and entrepreneurship	Proportion of youth and adults with information and communications technology (ICT) skills, by type of skill
4.5 By 2030, eliminate gender disparities in education and ensure equal access to all levels of education and vocational training for the vulnerable, including persons with disabilities, indigenous peoples and children in vulnerable situations	Parity indices (female/male, rural/urban, bottom/top wealth quintile and others such as disability status, indigenous peoples and conflict-affected, as data become available) for all education indicators on this list that can be disaggregated
4.6 By 2030, ensure that all youth and a substantial proportion of adults, both men and women, achieve literacy and numeracy	Proportion of population in a given age group achieving at least a fixed level of proficiency in functional (a) literacy and (b) numeracy skills, by sex



<p>4.7 By 2030, ensure that all learners acquire the knowledge and skills needed to promote sustainable development, including, among others, through education for sustainable development and sustainable lifestyles, human rights, gender equality, promotion of a culture of peace and non-violence, global citizenship and appreciation of cultural diversity and of culture's contribution to sustainable development</p>	<p>Extent to which (i) global citizenship education and (ii) education for sustainable development are mainstreamed in (a) national education policies; (b) curricula; (c) teacher education and (d) student assessment</p>
<p>4.a Build and upgrade education facilities that are child, disability and gender sensitive and provide safe, non-violent, inclusive and effective learning environments for all</p>	<p>Proportion of schools offering basic services, by type of service</p>
<p>4.b By 2020, substantially expand globally the number of scholarships available to developing countries, in particular least developed countries, small island developing States and African countries, for enrolment in higher education, including vocational training and information and communications technology, technical, engineering and scientific programmes, in developed countries and other developing countries</p>	<p>Volume of official development assistance flows for scholarships by sector and type of study</p>
<p>4.c By 2030, substantially increase the supply of qualified teachers, including through international cooperation for teacher training in developing countries, especially least developed countries and small island developing States</p>	<p>Proportion of teachers with the minimum required qualifications, by education level</p>



## Pepa Fa'aoopo 2. Tau Fa'ata'ita'i o le FVA 2025-2030

ESP2025-30 DEVELOPMENT COST ESTIMATES	
Fa'amuumua 1: TAUNU'UGA MO'OMIA MO A'O'OGA MA FA'ATUFUGAGA ANOA	
Taunu'uga Mo'omia	Fa'aleleia o taunu'uga mo a'oa'oga ma taunu'uga mo e fa'au'u.
Fa'aילוilo Autū o Fa'atinoga	KPI 1. (a) Pasene o tamaiti o le Vasega 4, vasega 6 ma le Vasega 8 ua ausia le L3 ma le L4 o le su'ega o le Gagana Peretania
	KPI 1. (b) Pasene o tamaiti o le Vasega 4, vasega 6 ma le Vasega 8 ua ausia le L3 ma le L4 o le su'ega o le Gagana Sāmoa
	KPI 1. (c) Pasene o tamaiti o le Vasega 4, vasega 6 ma le Vasega 8 ua ausia le L3 ma le L4 o le su'ega o le Numera
	KPI 1. (d) Pasene o tamaiti o le Vasega 4, vasega 6 ma le Vasega 8 ua ausia le L3 ma le L4 o le su'ega o le Fa'asaenisi
	KPI 2. (a) Pasene o tamaiti o le Vasega 12 ua ausia le L2 o le su'ega Gagana Peretania
	KPI 2. (b) Pasene o tamaiti o le Vasega 12 ua ausia le L2 o le su'ega Gagana Sāmoa
	KPI 2. (c) Pasene o tamaiti o le Vasega 12 ua ausia le L2 i le Numera
	KPI 2. (d) Pasene o tamaiti o le Vasega 12 ua ausia le L2 o le su'ega Fa'asaenisi
	KPI 3. (a) Pasene o Ā'oga Amata ua ausia tulaga fa'avae mo'omia
	KPI 3. (b) Pasene o Ā'oga a le Mālō ua ausia tulaga fa'avae mo'omia
	KPI 3. (c) Pasene o Ā'oga Fa'aauau ua ausia tulaga mo'omia mo resitala
KPI 3 (d) Pasene o le au fa'au'u i ā'oga fa'aauau ua resitalaina a latou fa'aaloga	

ESP 2025-2030 STRATEGIES	ACTIVITIES	Yr 1 2025-2026	Yr 2 2026-2027	Yr 3 2027-2028	Yr 4 2028-2029	Yr 5 2029-2030	IAs
Ta'iala 1 Fa'amalosia ma taofi faiā'oga tomai ma poto ma le aufaigaluega lagolago ile a'oa'oina.	S1A1. Su'eina ma le taofiga o faiĀ'oga	43,250.00	44,547.50	45,883.93	47,260.44	48,678.26	MEC
	S1A2. A'oa'oga o faiā'oga fou	1,000,000	1,030,000	1,060,900	1,092,727	1,125,508.81	MEC, NUS
	S1A3. A'oa'oga fa'aauau mo faiā'oga	5,140,000	5,294,200	5,453,026	5,616,616.78	5,785,115.28	MEC



	S1A4. Fa'atinoga o le Quality Assurance Performance Appraisal (QAPA)	1,640,000	1,689,200	1,739,876	1,792,072	1,845,834.45	MEC
	S1A5. Fesoasoani mo faiā'oga ā'oga amata	1,000,000	1,030,000	1,060,900	1,092,727	1,125,509	MEC (60% of costs estimated per year) SQA (40% of costs estimated per year)
Ta'iala 2 Fa'amālosia ma lagolagoina le pūlega ma le ta'ita'iga o ā'oga/fa'alapotopotoga e ta'ita'ia ai le ausiaina o tamaiti ā'oga ma le manuia o e fa'au'u.	S2A1. AoĀ'oga mo taitai o Ā'oga	100,000	103,000	106,090	109,272.70	112,550.88	MEC
	S2A2. AoĀ'oga ma fa'alauiloa mo Komiti o Ā'oga	250,000	257,500	265,225	273,182	281,377	MEC
Ta'iala 3 Fa'amālosia ma tausia si'osi'omaga o ā'oga ma a'oa'oga e lagolagoina ai le ausiaina o tamaiti ā'oga ma le manuia o e fa'au'u	S3A1. Asiasiga ma le lipotiina o Minimum Service Standards (MSS)	250,000	257,500	265,225	273,182	281,377	MEC
	S3A2. Tapenaga ma le tufatufaina o alagāoa a'oa'oga	4,750,400	4,892,912	5,039,699	5,190,890	5,346,617	MEC
	S3A3. Fa'aleleia o faleā'oga ma meatotino mo a'oa'oga	5,000,000	5,150,000	5,304,500	5,463,635	5,627,544	MEC
Ta'iala 4 Fa'amālosia faiga fa'apa'aga i le va o ā'oga ma fa'alapotopotoga, nu'u ma pā'aga, e lagolagoina ai le ausiaina o tamaiti ā'oga ma le manuia o e fa'au'u.	S4A1. Fesootaiga ma matua ma afioaga	100,000	103,000	106,090	109,273	112,551	MEC
Ta'iala 5 Fa'atino lagolago fa'asino mo tagata e a'oa'o o lo'o lamatia (e aofia ai tamaiti ā'oga e iai mana'oga	S5A1. A'oa'oga mo faiā'oga ma faiā'oga fesoasoani ia iloa galulue ma le fanau e iai mana'oga fa'apito	100,000	103,000	106,090	109,273	112,551	MEC



fa'apitōa) e lagolagoina ai le ausiaina o le faitautusi ma le numera	S5A2. Fa'alauiloaina o le NCDIEA Plan 2022-2025	150,000	154,500	159,135	163,909	168,826	MEC		
Ta'iala 6 Atina'e ma fa'atino polokalame o le soifua manuia o tamaiti ā'oga e lagolagoina ai le ausiaina o a'oa'oga.	S6A1. Fa'atino Faiga fa'avae mo ā'oga saogalemū	2,000,000	2,060,000	2,121,800	2,185,454	2,251,018	MEC		
Ta'iala 7 Fa'aā'oga fa'amatalaga o fuataga a ā'oga ma le atunu'u e ta'ita'ia ai galuega fa'atino vave, fa'asino mo le fa'aleleia o le ausiaina o tamaiti ā'oga ma taunu'uga mo e fa'au'u.	S7A1. Tu'ufatasi'ina, lipoti ma le fa'aleleia o su'ega	200,000	206,000	212,180	218,545.40	225,102	MEC		
	S7A2. Fa'aaogā taunu'uga o su'ega e fa'aleleia ai Faiga fa'avae, fuafuaga, ma le tapenaina o fesoasoani mo ā'oga	100,000	103,000	106,090	109,273	112,551	MEC		
Ta'iala 8 Fa'atino tulaga maualalo o le tulaga lelei/au'aunaga i vaega uma mai le AA i le AF.	S8A1. Si'itia le tapenaina lelei o a'oga fa'auau	1,000,000	1,030,000	1,060,900	1,092,727	1,125,509	SQA		
	S8A2. Fesoasoani mo ā'oga fa'auau ina ia ausia alāfua a le SQA	20,389,150	21,000,825	21,630,849	22,279,775	22,948,168	SQA (50% of costs estimated per year) MEC (50% of costs estimated per year)		
Aofa'i mo le fa'atinoga o le Fa'amuumua 1		43,212,800				44,509,184	45,844,460	47,219,793	48,636,387
<b>PRIORITY 2: EQUITY AND INCLUSION</b>									
<b>Sector Outcome 2</b>	<b>Equitable and inclusive access to quality education and training</b>								
Fa'aילוilo Autū o Fa'atinoga	KPI 4.(a) Si'itia le pasene fa'auauina o ā'oga a le fanau mai le Ā'oga Amata i le Ā'oga Tulaga Lua								
	KPI 4.(b) Si'itia le pasene o le fa'auauina o ā'oga a le fanau mai le Ā'oga Tualaga Lua aga'i Ā'oga Maualluluga								
	KPI 5. Si'itia le pasene o fanau ā'oga ua lesitala mo Ā'oga amata, Ā'oga Tulaga Lua ma Ā'oga Maualluluga								
	KPI 6. Si'itia le pasene o fanau ua mā'ea Ā'oga Tulaga Lua ma Ā'oga Maualluluga								
	KPI 7. Numera of fanau e iai mana'oga tumau o le mafafau olo'o resitala i Ā'oga ma Ā'oga Fa'apitōa								
	KPI 8. Si'itia le pasene o fanau olo'o fa'auauina ā'oga mai le Ā'oga Maualluluga aga'i i Ā'oga Fa'auau								
	KPI 9. Numera o matā'upu TVET ua mā'ea ona tu'ufa'atasi ma pasiaina o ni fa'aillōga aloa'ia mo TVET								
	KPI 10. (a) Si'itia pasene o lesitala a Ā'oga Fa'auau								



	KPI 10. (b) Si'itia pasene o fanau ua mā'ea latou ā'oga mo fa'aailoga i Ā'oga Fa'aauau						
	KPI 11. Pasene o ā'oga ua mafai ona fa'aaogāina a'oa'oga i upega tafa'ilagi ma alagāoa olo'o maua ai						
STRATEGIES	ACTIVITIES	Yr 12025-2026	Yr 22026-2027	Yr 32027-2028	Yr 42028-2029	Yr 52029-2030	IAs
Ta'iala 9 Fa'amālosia le auai o tamaiti i tausaga e tatau ona a'oa'oina (4-16 tausaga)	S9A1. Fa'alauiloa ina ia fa'amālosia le ave o fanau i ā'oga	500,000	515,000	530,450	546,364	562,754	MEC
	S9A2. Aoina o fa'amatalaga o le auai o faiā'oga i Ā'oga ma fa'amatalaga o lesitala	409,638	421,927	434,585	447,623	461,051	MEC
Ta'iala 10  Fa'amālosia faiga fa'avae mo le aofia tutusa i vaega uma o a'oa'oga	S10A1. Fa'atino le faiga fa'avae mo Ā'oga Sauo'o	1,000,000	1,030,000	1,060,900	1,092,727	1,125,509	MEC
	S10A2. Polokalame mo le siaki'ina o taliga / Fa'alogo a fanau ā'oga	338,175	348,320	358,770	369,533	380,619	MEC
Ta'iala 11 Fausia auala fesuia'i o le a'oa'oina ma fa'aailoga e lagolagoina ai le a'oa'oina i le olaga atoa, e aofia ai le fa'amālosia o le TVET i ā'oga, ma le lagolagoina o le STEM (Saienisi, Tekonolosi, Inisinia ma le Matematika).	S11A1. Fa'amālosi ma fa'alauiloa le STEM (Science, Technology, Engineering and Mathematics)	1,125,000	1,158,750	1,193,513	1,229,318	1,266,197	MEC (80% of costs estimated per year) NUS (20% of costs estimated per year)
	S11A2. Tapena ma fa'atino auala o a'oa'oga mai Ā'oga Mauaululuga aga'i i Ā'oga Fa'aauau	1,200,000	1,236,000	1,273,080	1,311,272	1,350,611	MEC (10% of costs estimated per year) SQA (10% of costs estimated per year) NUS (80% of costs estimated per year)
	S11A3. O fa'alauiloa mo fanau ā'oga i avanoa ma galuega e filifili ai mo le lumana'i	1,200,000	1,236,000	1,273,080	1,311,272	1,350,611	MEC (10% of costs estimated per year) SQA (10% of costs estimated per year) NUS (80% of costs estimated per year)



Ta'iala 12 Fa'amaulalo tuā'oi o totoji mo tagata e a'oa'o lamatia e ala i sikolasipi ma isi auala e lagolagoina ai tupe	S12A1. Polokalame sikolasipi mo fanau e iai mana'oga tumau	1,000,000	1,030,000	1,060,900	1,092,727	1,125,509	MEC
	S12A2. Fesoasoani tau seleni mo fanau ā'oga lima vaivai	1,000,000	1,030,000	1,060,900	1,092,727	1,125,509	MEC (40% of costs estimated per year) SQA (30% of costs estimated per year) NUS (30% of costs estimated per year)
	S12A2. Fesoasoani tau tupe mo fanau e iai mana'oga tumau	1,000,000	1,030,000	1,060,900	1,092,727	1,125,509	NUS
	S12A4. Tupe fesoasoani e lagolago mo Ā'oga Fa'aauau mo i latou e iai ni lamatiaga	500,000	515,000	530,450	546,364	562,754	SQA
Ta'iala 13 Fa'aofi tekonoosi e lagolagoina ai avanoa tutusa i a'oa'oga lelei mo tagata uma	S13A1. Fesoasoani fa'atekonolosi e una'ia ai a'oa'oga ma tapenaga o su'ega	1,139,000	1,173,170	1,208,365	1,244,616	1,281,955	MEC (60% of costs estimated per year) SQA (10% of costs estimated per year) NUS (30% of costs estimated per year)
	S13A2. Fa'atinoina o le WiseNet mo lesitala a fanau ā'oga	100,000	103,000	106,090	109,273	112,551	NUS
Ta'iala 14 Fa'avae faiga pā'aga lelei i le vaega atoa ma vaega ese'ese e taulima ai tuā'oi e le o a'oa'oga i le ausia o a'oa'oga	S14A1. Faiga fa'apā'aga ma isi Vaega Ma'oti e fesoasoani e fo'ia fa'afitauli olo'o afāina ai tulaga ausia e fanau ā'oga	500,000	515,000	530,450	546,364	562,754	MEC (60% of costs estimated per year) SQA (20% of costs estimated per year) NUS (20% of costs estimated per year)
Aofa'i o le Tau Fa'ata'ita'i mo le 2	Fa'atinoina o le Fa'amuumua	11,441,813	11,785,067	12,138,619	12,502,778	12,877,861	
PRIORITY 3: RELEVANCE AND CONTRIBUTION							
Taunu'uga Mo'omia 3	Fa'aleleia le talafeagai o a'oa'oga ma le sao i le atina'e tumau o Sāmoa						
Fa'aילוilo autū o Fa'atinoga	KPI 12. Pasene o fanau sa fa'au'u mai Ā'oga Fa'aauau ua maua galuega i totonu o le 6 masina						





	KPI 13. Pasene o Fale Faigaluega o fanau mai Ā'oga Fa'aaauau, ua fa'amalieina i le tomai ma le agava'a sa fa'atino ai e le tamaiti'iti galuega						
	KPI 14. Toe lloilo le ta'iala o Matā'upu mo ā'oga						
	KPI 15. Pasene o fa'ailoga o Ā'oga Fa'aaauau ua mafai ona lloilo ma fa'afou i totonu o le 5 tausaga						
	KPI 16. Pasene o ICH ma TCH ua mafai ona tu'u i totonu o Ā'oga ma Ā'oga Fa'aaauau						
	KPI 17. Si'itia % ole fa'aaogāina o le gagana Sāmoa i A'oa'oga						
	KPI 18. (a) Numera ta'iala fou ma ta'iala ua mā'ea ona toe lloilo						
	KPI 18. (b) Numera o fa'alapotopotoga ua fa'aaogāina faiga fa'avae mo su'esu'ega						
	KPI 18. (c) Numera o faiā'oga ua a'oa'oina i vaega o a'oa'oga fa'aaogāina ai tekonolosi						
	KPI 18. (d) Numera o AI ua fa'amaonia i su'esu'ega e ā'oga mo a'oa'oga						
STRATEGIES	ACTIVITIES	Yr 1 2025-2026	Yr 2 2026-2027	Yr 3 2027-2028	Yr 4 2028-2029	Yr 5 2029-2030	IAs
Ta'iala 15 Atina'e se si'osi'omaga fesoasoani mo le atina'eina fou o tomai e fetai ai ma mana'oga o le maketi o galuega	S15A1. Galuega e tu'ufa'atasia ai a'oa'oga ma su'ega	167,000	172,010	177,170	182,485	187,960	SQA
	S15A2. Fa'atino le su'esu'ega po'o fea ua aga'i iai tamaiti fa'au'u atu i Ā'oga Fa'aaauau	330,120	340,024	350,224	360,731	371,553	SQA
	S15A3 Fa'atino le su'esu'ega ma le saili'iliga mo Fale Faigaluega pe na fa'amalieina i au'aunaga a tamaiti fa'au'u atu i Ā'oga Fa'aaauau	80,500	82,915	85,402	87,964	90,603	NUS
	S15A4. Tapena ma fa'atino faiga fa'avae mo le fa'amautinoaina lelei o micro-credentials	80,500	82,915	85,402	87,964	90,603	SQA
Ta'iala 16 Mautinoa le talafeagai o matā'upu a'oa'oina ma fa'ailoga e ala i le iloiloga ma fa'afouga i taimi	S16A1. Iloilo ma toe fa'asao le Ta'iala o Matā'upu ta'itasi	195,000	200,850	206,876	213,082	219,474	MEC (70% of costs estimated per year) NUS (30% of costs estimated per year)
	S16A2. Fa'aleleia alagāoa mo a'oa'oga	192,550	198,327	204,276	210,405	216,717	MEC (70% of costs estimated per year) NUS (30% of costs estimated per year)



fa'atapula'a o matā'upu a'oa'oina ma puna'oa mo le a'oa'oina	S16A3. Iloilo Fa'ailoga Aloa'ia a Sāmoa	67,650	69,680	71,770	73,923	76,141	SQA (50% of costs estimated per year) NUS (50% of costs estimated per year)
Ta'iala 17 Fa'atino le fa'ava'a faiga fa'avae o le Aganu'u i A'oa'oga ma le Fa'atonufofau o le Gagana Sāmoa	S17A1. Polokalame fa'a leaganu'u	389,000	400,670	412,690	425,071	437,823	MEC
	S17A2. Polokalame mo le Gagana Sāmoa ma lomiga	25,000	25,750	26,523	27,318	28,138	MEC
	S17A3. Tusi Fa'afanua o talatu'u ma mata'aga fa'aleaganu'u	86,100	88,683	91,343	94,084	96,906	MEC
Ta'iala 18 Galulue fa'atasi i le vaega atoa e su'esu'e, fautuaga ma fa'atino auala fou mo le a'oa'oina e aofia ai le fa'aofi o le ICT, e fa'aleleia ai le ausia ai sini autū o tamaiti ā'oga ma le manuia o e fa'au'u.	S18A1. Galulue fa'atasi o Vaega ma'oti e una'ia auala fou e fa'aleleia ai a'oa'oga	473,250	487,448	502,071	517,133	532,647	MEC (50% of costs estimated per year) SQA (30% of costs estimated per year) NUS (20% of costs estimated per year)
	S18A2. Su'esu'ega o auala fou mo a'oa'oga e pei o le fa'aaogāina o le AI	500,000	515,000	530,450	546,364	562,754	NUS
	S18A3. Fa'ata'ita'iga o le fa'aaogāina o auala fou pei o le AI	500,000	515,000	530,450	546,364	562,754	NUS
Aofa'i Tau Fa'ata'ita'i mo le fa'atinoga o le Fa'amamua 3		3,086,670	3,179,270	3,274,648	3,372,888	3,474,074	
<b>PRIORITY 4: SECTOR PERFORMANCE AND RESILIENCE</b>							
<b>Taunu'uga Mo'omia 4</b>	<b>O se Vaega o A'oa'oga e ato'atoa ana fa'atinoga ma vave ona fetu'una'i ana galuega</b>						
Fa'a'ailoilo Autū o Fa'atinoga	KPI 19. (a) Fa'amauina le fa'atinoga o faiga fa'avae a le vaega o a'oa'oga ma le iloilo o auala e fa'atino ai						
	KPI 19. (b) Numera o su'esu'ega tu'u fa'atino a le Vaega o A'oa'oga olo'o lagoagoina taunu'uga mo'omia						
	KPI 20. Fa'amausali le fefa'asoa'ai o fa'amatalaga ma se maliega i le va o IA						
	KPI 21. Pasene o sui o pūlega i totonu o Vaega o A'oa'oga ua auai i a'oa'oga e si'itia ai le tomai ma le agava'a i galuega						
	KPI 22. Fa'aiti'itia le pasene o tupe e lei fa'aaogāina pea mā'ea le tausaga fa'aletupe						
	KPI 23. Paene o Ā'oga ma Ā'oga Fa'auau ua iai fuafuaga mo fa'alavelave fa'afuase'i						



KPI 24. Numera o fa'alauiloa e lagolago ai fa'amuamua a le Vaega o A'oa'oga							
Ta'iala	Galuega Fa'atino	Yr 2025-2026	Yr 2026-2027	Yr 2027-2028	Yr 2028-2029	Yr 2029-2030	IAs
Ta'iala 19 Fa'amaopopo le fa'atulagaina o faiga fa'avae tau a'oa'oga ma le pulega o le vaega	S19A1. Fausia auala e fa'aitno mo le fausiaina ma le iloiloaina o faiga fa'avae	100,000	103,000	106,090	109,273	112,551	MEC
	S19A2. Fa'amaopopo le fa'atinoga o faiga fa'avae	12,000	12,360	12,731	13,113	13,506	MEC
Ta'iala 20 Fa'atino faiga ma fa'atulagaga mo le fa'aaogaina o fa'amatalaga ma le fa'atulagaina o su'esu'ega e lagolago ai taunu'uga o le vaega o a'oa'oga.	S20A1. Fa'amaopopo ma le tufatufaina o luga o su'esu'ega a le Vaega Ma'oti o A'oa'oga	415,000	427,450	440,274	453,482	467,086	MEC (60% of costs estimated per year) SQA (20% of costs estimated per year) NUS (20% of costs estimated per year)
	S20A2. Fa'atinoina o le PacSIMS	191,200	196,936	202,844	208,929	215,197	MEC (60% of costs estimated per year) SQA (20% of costs estimated per year) NUS (20% of costs estimated per year)
Taiala 21 Atia'e toma'i mo le ta'ita'iga ma le puleaina ma le fa'aaauuina i totonu o le vaega o a'oa'oga	S21A1. A'oa'oga mo ta'ita'i ina ia sil'itia lo latou silafia i ta'ita'iga ma pulega lelei	200,000	206,000	212,180	218,545	225,102	MEC (60% of costs estimated per year) SQA (20% of costs estimated per year) NUS (20% of costs estimated per year)
			-	-	-	-	
Ta'iala 22 Fa'amalosia le tu'uina atu o tala o tupe mo le fa'aleleia o taunu'uga o le vaega o a'oa'oga	S22A1. Mata'ituina o le fa'aaogaina o tupe a le Vaega Ma'oti o A'oa'oga i Kuata ta'itasi	3,000	3,090	3,183	3,278	3,377	MEC (60% of costs estimated per year) SQA (20% of costs estimated per year) NUS (20% of costs estimated per year)
	S22A2. Fa'amalosia le fuafuaga ma vaega ua fa'ama'oti mo Fa'atauga	6,000	6,180	6,365	6,556	6,753	MEC (60% of costs estimated per year) SQA (20% of costs estimated per year) NUS (20% of costs estimated per year)
	S22A3. Ripoti o tupe a le Vaega Ma'oti	6,000	6,180	6,365	6,556	6,753	MEC (60% of costs estimated per year) SQA (20% of costs estimated per year) NUS (20% of costs estimated per year)
	S22A4 Mata'ituina o le Vaega tupe mo A'oga Fa'aaauu		6,180	6,365	6,556	6,753	



Ta'iala 23 Fa'aleleia le tomai o le vaega o a'oa'oga e tausi ai le maua o a'oa'oga ma le tulaga lelei i taimi o mala fa'alēnatura pe fa'alavelave	S23A1. Fuafuaga ma polokalame mo ā'oga i taimi o fa'alavelave fa'afuasei	40,000	41,200	42,436	43,709	45,020	MEC (60% of costs estimated per year) SQA (20% of costs estimated per year) NUS (20% of costs estimated per year)
	S23A2. A'oa'oga mo faiā'oga ma le Matāgaluega o Ā'oga ma le tafatolu mo tapenaga i fa'alavelave fa'afuase'i	86,200	88,786	91,450	94,193	97,019	MEC (60% of costs estimated per year) SQA (20% of costs estimated per year) NUS (20% of costs estimated per year)
Ta'iala 24 Fa'amālosia le silafia lautele e ala i feso'otaiga, fa'asalalauga, ma isi galuega fa'atino mo le silafia lautele.	S24A2. Fa'alauiloa a le Vaega o A'oa'oga	1,855,250	1,910,908	1,968,235	2,027,282	2,088,100	MEC (60% of costs estimated per year) SQA (20% of costs estimated per year) NUS (20% of costs estimated per year)
	S24A2. Fausia ma fa'atino ta'iala o feso'ota'iga	243,000	250,290	257,799	265,533	273,499	MEC (60% of costs estimated per year) SQA (20% of costs estimated per year) NUS (20% of costs estimated per year)
Aofa'i Tau Fa'ata'ita'i mo le Fa'atinoga o le Fa'amua 4		3,157,650	3,252,380	3,349,951	3,450,449	3,553,963	
<b>Aofa'i Tau Fa'ata'ita'i mo Fa'atinoga i Tausaga Ta'itasi</b>		<b>60,898,933</b>	<b>62,725,901</b>	<b>64,607,678</b>	<b>66,545,908</b>	<b>68,542,286</b>	
<b>Aofa'i Tau Fa'ata'ita'i mo le Fa'atinoga o le FVA 2025-2030</b>		<b>323,320,706</b>					



## Annex 3: Methods of Calculation for KPIs<sup>5</sup>

ESP 2025-2030 KPIs	Method of Calculation
KPI 1. (a) Pasene o tamaiti o le Vasega 4, vasega 6 ma le Vasega 8 ua ausia le L3 ma le L4 o le su'ega o le Gagana Peretania	Total number of boys achieved working at expected levels (L3 and L4) in English subject divide by the total number of boys sat this subject in a given year * 100%  Total number of girls achieved working at expected levels (L3 and L4) in English subject divide by the total number of girls sat this subject in a given year * 100%
KPI 1. (b) Pasene o tamaiti o le Vasega 4, vasega 6 ma le Vasega 8 ua ausia le L3 ma le L4 o le su'ega o le Gagana Sāmoa	Total number of boys achieved working at expected levels (L3 and L4) in Gagana Sāmoa subject divide by the total number of boys sat this subject in a given year * 100%  Total number of girls achieved working at expected levels (L3 and L4) in Gagana Sāmoa subject divide by the total number of girls sat this subject in a given year * 100%
KPI 1. (c) Pasene o tamaiti o le Vasega 4, vasega 6 ma le Vasega 8 ua ausia le L3 ma le L4 o le su'ega o le Numera	Total number of boys achieved working at expected levels (L3 and L4) in Mathematics subject divide by the total number of boys sat this subject in a given year * 100%  Total number of girls achieved working at expected levels (L3 and L4) in Mathematics subject divide by the total number of girls sat this subject in a given year * 100%
KPI 1. (d) Pasene o tamaiti o le Vasega 4, vasega 6 ma le Vasega 8 ua ausia le L3 ma le L4 o le su'ega o le Fa'asaaienisi	Total number of boys achieved working at expected levels (L3 and L4) in Science subject divide by the total number of boys sat this subject in a given year * 100%  Total number of girls achieved working at expected levels (L3 and L4) in Science subject divide by the total number of girls sat this subject in a given year * 100%
KPI 2. (a) Pasene o tamaiti o le Vasega 12 ua ausia le L2 o le su'ega Gagana Peretania	Total number of boys working at expected levels (L2, L3 and L4) in English divide by the total number of boys sat this subject in a given year * 100%  Total number of girls working at expected levels (L2, L3 and L4) in English divide by the total number of boys sat this subject in a given year * 100%
KPI 2. (b) Pasene o tamaiti o le Vasega 12 ua ausia le L2 o le su'ega Gagana Sāmoa	Total number of boys working at expected levels (L2, L3 and L4) in Sāmoa n divide by the total number of boys sat this subject in a given year * 100%  Total number of girls working at expected levels (L2, L3 and L4) in Sāmoa n divide by the total number of boys sat this subject in a given year * 100%

<sup>5</sup> All statistical reporting should be disaggregated by gender. IAs may add other disaggregation lens for agency reporting



ESP 2025-2030 KPIs	Method of Calculation
KPI 2. (c) Pasene o tamaiti o le Vasega 12 ua ausia le L2 I le Numera	Total number of boys working at expected levels (L2, L3 and L4) in Mathematics divide by the total number of boys sat this subject in a given year * 100%  Total number of girls working at expected levels (L2, L3 and L4) in Mathematics divide by the total number of boys sat this subject in a given year * 100%
KPI 2. (d) Pasene o tamaiti o le Vasega 12 ua ausia le L2 o le su'ega Fa'asaaienisi	Total number of boys achieved passing expected levels (L2, L3 and L4) in Biology, Chemistry and Physics subjects divide by the total number of boys sat in each of these subject in a given year * 100%  Total number of girls achieved working at expected levels (L2, L3 and L4) in Biology, Chemistry and Physics subjects divide by the total number of girls sat in each of these subject in a given year * 100%
KPI 3. (a) Pasene o Ā'oga Amata ua ausia tulaga fa'avae mo'omia	Number of ECE centres meeting minimum standards divide by total number of ECE centres * 100%
KPI 3. (b) Pasene o Ā'oga a le Mālō ua ausia tulaga fa'avae mo'omia	Number of government schools meeting Minimum Service Standards Domain 4 (Student Achievement) divide by total number of government schools, * 100%
KPI 3. (c) Pasene o Ā'oga Fa'aauau ua ausia tulaga mo'omia mo resitala	Number of PSET Providers registered divide by total number of PSET Providers, * 100%
KPI 3 (d) Pasene o le au fa'au'u i ā'oga fa'aauau ua resitalaina a latou fa'ailoga	
KPI 4.(a) Si'itia le pasene fa'aauauina o ā'oga a le fanau mai le Ā'oga Amata i le Ā'oga Tulaga Lua	Total number of students enrolled in a final year level (K4) in the previous year, divide by new entrants enrolled to the first-year level of a primary level of education in a given year excluding repeater (Year 1) * 100%.
KPI 4.(b) Si'itia le pasene o le fa'auauina o ā'oga a le fanau mai le Ā'oga Tualaga Lua aga'i Ā'oga Mauaululuga	Total number of students enrolled in a final year level (Year 8) in the previous year, divide by new entrants enrolled to the first-year level of a higher level of education in a given year excluding repeater (Year 9) * 100%.
KPI 5. Si'itia le pasene o fanau ā'oga ua lesitala mo Ā'oga amata, Ā'oga Tulaga Lua ma Ā'oga Mauaululuga	NER Total enrolment of official ECE school age (age 4) divide by the total population of this age-group from the Population and Housing Census projection * 100%  Total enrolment of official Primary school age (age 5-12) divide by the total population of this age-group from the Population and Housing Census projection * 100%  Total enrolment of official Secondary school age (age 13-16) divide by the total population of this age-group from the Population and Housing Census projection * 100%





ESP 2025-2030 KPIs	Method of Calculation
KPI 6. Si'itia le pasene o fanau ua mā'ea Ā'oga Tulaga Lua ma Ā'oga Maualuluiga	Total number of students who sat SNAPE Year 8 national exam in a given year divide by the total number of students enrolled in this same year and level excluding repeaters and multiply this result by the retention rate to the last year level of primary education (Year 8) in a given year by 100.  Total number of students who sat SSLC Year 12 national exam in a given year divide by the total number of students enrolled in this same year and level excluding repeaters and multiply this result by the retention rate to the last year level of secondary education (Year 12) in a given year by 100.
KPI 7. Numera of fanau e iai mana'oga tumau o le mafauafau olo'o resitala i Ā'oga ma Ā'oga Fa'apitoa	Number of students with a disability enrolled in ECE, primary, secondary, PSET; and in special schools, disaggregated by gender.
KPI 8. Si'itia le pasene o fanau olo'o fa'aauuina ā'oga mai le Ā'oga Maualuluga aga'i i Ā'oga Fa'aauau	Number of new PSET entrants in Year X divided by Number of Year 12 students who sat SLC in Year X-1, multiplied by 100. Disaggregate by gender.
KPI 9. Numera o matā'upu TVET ua maā'a ona tu'ufa'atasi ma pasiaina o ni fa'ailoga aloa'ia mo TVET	Number of TVET courses packaged, accredited and delivered in secondary schools
KPI 10. (a) Si'itia pasene o lesitala a Ā'oga Fa'aauau	Total number of PSET enrolments regardless of age divided by number of population in theoretical age group for PSET (17-22) multiplied by 100. Disaggregate by gender.
KPI 10. (b) Si'itia pasene o fanau ua mā'ea latou Ā'oga mo fa'ailoga i Ā'oga Fa'aauau	
KPI 11. Pasene o ā'oga ua mafai ona fa'aaogāina a'oa'oga i upega tafa'ilagi ma alagāoa olo'o maua ai	Number of students with access to digital learning platforms and culturally relevant e-resources divide by total number of students, * 100
KPI 12. Pasene o fanau sa fa'au'u mai Ā'oga Fa'aauau ua maua galuega i totonu o le 6 masina	Number of recent, employed PSET graduates finding employment within 6 months of graduation, divided by the total number of employed graduates responding to the survey.
KPI 13. Pasene o Fale Faigaluega o fanau mai Ā'oga Fa'aauau, ua fa'amalieina i le tomai ma le agava'a sa fa'atino ai e le tamaiti'iti galuega	The number of employers indicating their satisfaction with graduate knowledge and skills, divided by the total number of employer respondents, multiplied by 100.
KPI 14. Toe lloilo le ta'iala o Matā'upu mo ā'oga	Completed review or update of school curriculum by subject or sub-sector
KPI 15. Pasene o fa'ailoga o Ā'oga Fa'aauau ua mafai ona lloilo ma fa'afou i totonu o le 5 tausaga	Number of PSET registered qualifications reviewed in 5-year period divided by total number of registered PSET qualifications multiplied by 100.





ESP 2025-2030 KPIs	Method of Calculation
KPI 16. Pasene o ICH ma TCH ua mafai ona tu'u i totonu o Ā'oga ma Ā'oga Fa'aaauau	<p>Proposing a Culture Mainstreaming Index approach with five weighted sub-indicators:</p> <ol style="list-style-type: none"> <li>1. Calculate achievement percentage for each sub-indicator by dividing the actual number achieved by the target number and multiplying by 100</li> <li>2. Calculate weighted achievement by multiplying each achievement percentage by its assigned weight</li> <li>3. Sum all weighted achievements to produce the final Culture Mainstreaming Index score</li> </ol> <p>The five sub-indicators (with their weights) are: schools conducting cultural days (20%), schools participating in Sāmoa Ne'i Galo Festival (20%), ICH &amp; TCH learning resources developed (25%), vocational trainings on safeguarding ICH &amp; TCH for TVET (15%), and teachers trained in ICH/TCH delivery (20%).</p>
KPI 17. Si'itia % ole fa'aaogāina o le gagana Sāmoa i A'oa'oga	<p>Proposing a Sāmoa Language Mainstreaming Index with four equally weighted sub-indicators (25% each):</p> <ol style="list-style-type: none"> <li>1. Calculate achievement percentage for each sub-indicator by dividing the actual number achieved by the target number and multiplying by 100</li> <li>2. Calculate weighted achievement by multiplying each achievement percentage by its assigned weight</li> <li>3. Sum all weighted achievements to produce the final Language Mainstreaming Index score</li> </ol> <p>The four sub-indicators are: percentage of surveyed households reporting regular Sāmoa n language use, percentage of students achieving above 75% in Sāmoa n national examinations, number of new Sāmoa n language resources, and number of students enrolled in Sāmoa n Language at Y11, Y12 &amp; NUS.</p>
KPI 18. (a) Numera ta'iala fou ma ta'iala ua mā'ea ona toe lloilo	Number of new/revised policies or interventions linked to sector research outputs, evident in concept note, proposals or requests for funding.
KPI 18. (b) Numera o fa'alapotopotoga ua fa'aaogāina faiga fa'avae mo su'esu'ega	Number of professional learning communities established to share best practices from research, evident in annual or quarterly reporting
KPI 18. (c) Numera o faiā'oga ua a'oa'o'ina i vaega o a'oa'oga fa'aaogāina ai tekonolosi	Number of teachers trained in ICT-based teaching methods annually



ESP 2025-2030 KPIs	Method of Calculation
KPI 18. (d) Numera o AI ua fa'amaonia i su'esu'ega e ā'oga mo a'oa'oga	Number of AI innovations backed by research, to support teaching and learning and education management, evident in annual or quarterly reporting
KPI 19. (a) Fa'amauiina le fa'atinoga o faiga faavae a le vaega o a'oa'oga ma le iloiloina o auala e fa'atino ai	Approved and implemented policy development and review protocol document.
KPI 19. (b) Numera o su'esu'ega tu'ufa'atasi a le Vaega o A'oa'oga olo'o lagoagoina taunu'uga mo'omia	Count of sector research projects that involve multiple sector agencies, directly linked to education sector outcomes, with a formally documented research plan/proposal, approved and completed within 2025-2030.
KPI 20. Fa'amausalī le fefa'asoa'ai o fa'amatalaga ma se maliega i le va o IA	Establishment of data sharing system or agreement evident in one or more of: signed data sharing agreement, documented data sharing protocol, and evidence of active data sharing.
KPI 21. Pasene o sui o pūlega i totonu o Vaega o A'oa'oga ua auai i a'oa'oga e si'itia ai le tomai ma le agava'a i galuega	Number of IAs executive and middle management completing professional development in education leadership and education management.
KPI 22. Fa'aiti'itia le pasene o tupe e lei faaogāina pea mā'ea le tausaga fa'aletupe	Total unutilised sector funds divided by total allocated funds, multiplied by 100.
KPI 23. Pasene o Ā'oga ma Ā'oga Fa'aauau ua iai fuafuaga mo fa'alavelave fa'afuase'i	Number of schools and PSET Providers with functional disaster plans (plan exists, is less than 12 months old, staff have been trained on plan, drills conducted, funding or resources allocated), divided by total number of schools and PSET Providers, multiplied by 100. Disaggregate by sub-sector.
KPI 24. Numera o fa'alauiloa e lagolago ai fa'amumua a le Vaega o A'oa'oga	

