



STUDENT EDUCATION NUMBER									

Samoa Secondary Leaving Certificate

GEOGRAPHY

2025

QUESTION and ANSWER BOOKLET

Time allowed: 3 Hours & 10 minutes

INSTRUCTIONS

1. You have 10 minutes to read **before** you start the exam.
2. Write your **Student Education Number (SEN)** in the space provided on the top right-hand corner of this page.
3. **Answer ALL QUESTIONS.** Write your answers in the spaces provided in this booklet.
4. If you need more paper to write your answers, ask the Supervisor for extra paper. Write your SEN on all extra sheets used and clearly number the questions. Attach the extra sheets to the appropriate places in this booklet.

STRANDS		Pages	Time (min)	Weighting
STRAND 1	PHYSICAL ENVIRONMENT	2-8	36	20
STRAND 2	RESOURCES AND THEIR USES	9-13	36	20
STRAND 3	POPULATION AND SETTLEMENT	14-18	36	20
STRAND 4	GLOBALISATION AND TOURISM	19-23	36	20
STRAND 5	ENVIRONMENTAL ISSUES	24-27	36	20
	TOTAL		180	100

Check that this booklet contains pages 2-28 in the correct order and that none of these pages are blank.

HAND THIS BOOKLET TO THE SUPERVISOR AT THE END OF THE EXAMINATION.

For Questions 1 to 6, choose and write the LETTER of the correct answer in the box provided.

Use Resource 1 below and your knowledge to answer Question 1.

Resource 1: LMS church damaged by a natural hazard on the island of Savai'i, 1905.



Source: National Library of New Zealand & Public Domain

1. Which of these natural disasters occurred in Samoa in 1905 as depicted in Resource 1?

- A. Cyclone
- B. Flooding
- C. Tsunami
- D. Volcano

	SL 1

Use Resource 2 below and your knowledge to answer Questions 2 and 3.

Resource 2: Natural Hazards



Source: Youtube

2. Which **ONE** of these natural hazards is generally accompanied by strong winds, heavy rain and a rotating storm?

- A. Tropical cyclone
- B. Volcano
- C. Tsunami
- D. Convectional rainfall

SL 1

3. In December 2024, a natural hazard occurred in Port Vila in Vanuatu which claimed lives, triggered landslides, destroyed the environment and multiple buildings.

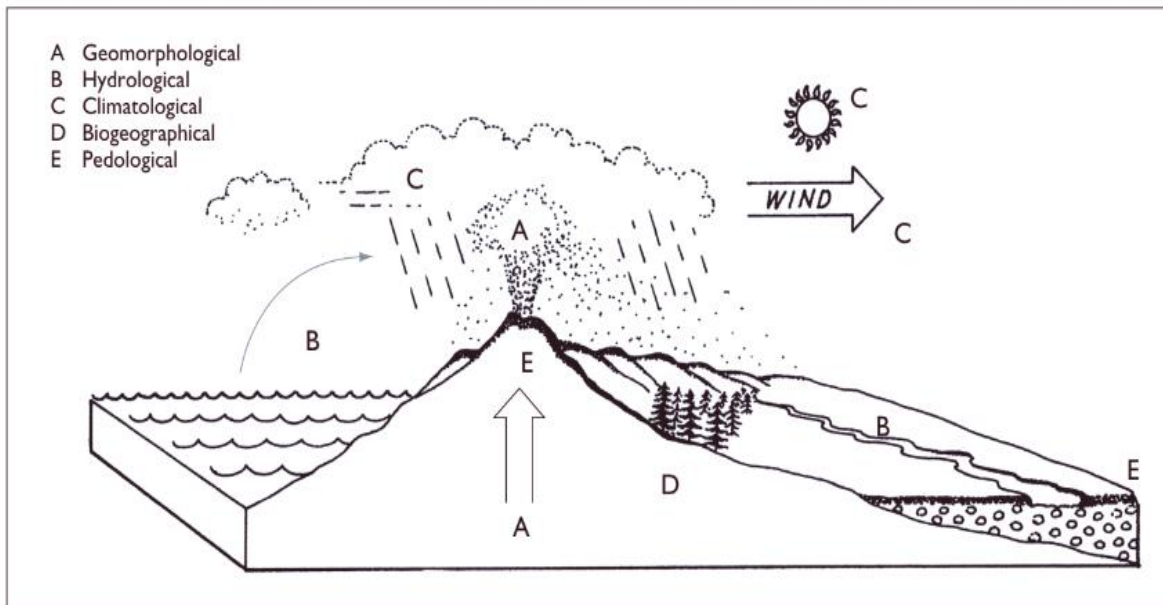
Which of the following is the natural hazard referred to?

- A. Cyclone
- B. Earthquake
- C. Volcano
- D. Flooding

SL 1

Use Resource 3 below and your knowledge to answer Question 4.

Resource 3: How some landforms are produced



Source: MESC textbook

4. When different forces push or pull on the earth's crust, this can cause rocks to slide up, down or past each other. Which of the following is likely to be seen after such events?

- A. Tectonic plates
- B. Mantle
- C. Subduction process
- D. Fault lines

	SL 1

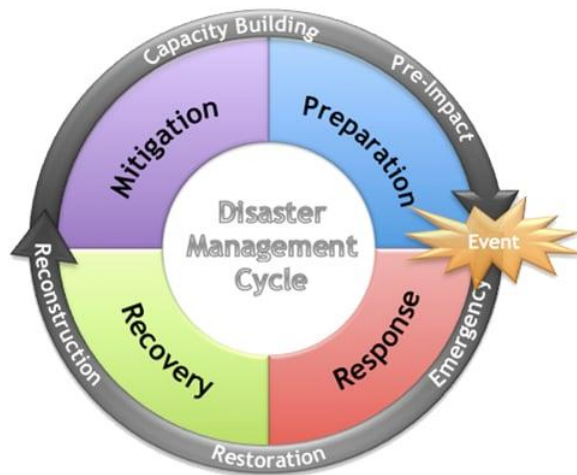
5. A diagram that illustrates the geologic features intersecting a vertical imaginary plane, and is used to illustrate an area's structure is generally referred to as a/an;

- A. demographic map.
- B. emergency and evacuation map.
- C. cross-sectional map.
- D. geotelemorphological map.

	SL 1

Use Resource 4 below and your knowledge to answer Questions 6 and 7.

Resource 4: Emergency Plan for Natural Hazards



Source: <https://www.ehs.ucsb.edu/programs-services/emergency-management-mission-continuity>

6. The collection of steps that our villages can take in anticipation of a natural hazard is called;

- A. disaster preparedness.
- B. building codes.
- C. early warning systems.
- D. evacuation procedures.

SL 1

7. On average, tropical cyclones occur in Samoa about once per year, with the most affected regions being Va'a-o-Fonoti, Palauli and Vaisigano.

Describe **ONE** emergency procedure that can be used by the government of Samoa to reduce the effects of tropical cyclones.

SL 2

Use Resource 5 below and your knowledge to answer Questions 8 and 9.

Resource 5: Earthquake in Tonga, October 2017



Source: <https://www.egypttoday.com/Article/1/28274/Magnitude-6-4-quake-strikes-off-Pacific-island-of-Tonga>

8. The ring of fire is a tectonic belt made up of mountains, volcanoes, and oceanic trenches that surrounds the Pacific Ocean and is known for its frequent earthquakes and active volcanoes.

Describe **ONE** physical feature of an earthquake.

SL 2

9. Explain **ONE** reason why it is important for people in Samoa to study earthquakes.

SL 3

Use Resource 6 and your knowledge to answer Questions 10 and 11.

Resource 6: Impact of a Natural Hazard on Samoa



Source: Reuters

10. Samoa experienced cyclone Evan in December 2012, which was accompanied by significant damage.

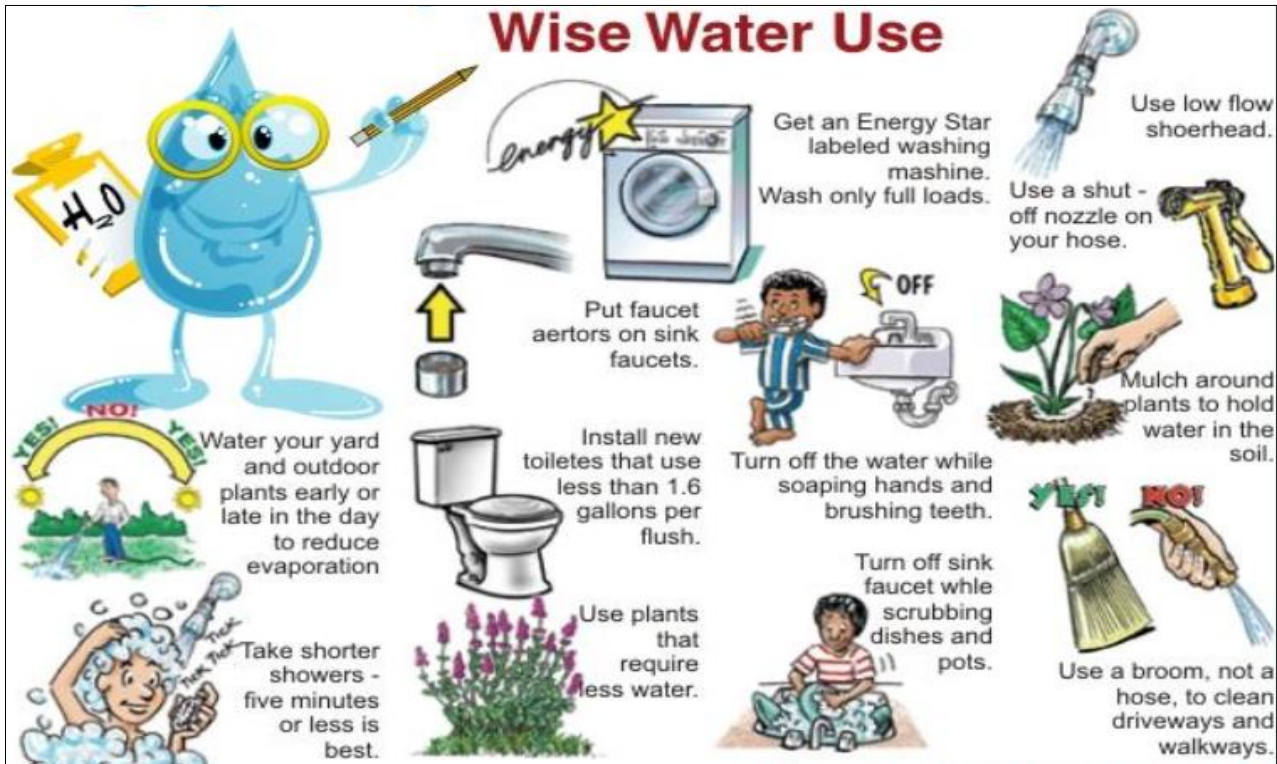
Explain **ONE** reason cross-sectional maps of tropical cyclones are important for the Samoan public.

SL 3

For Questions 12 to 16, choose and write the LETTER of the correct answer in the box provided.

Use Resource 7 below and your knowledge to answer Questions 12 and 13.

Resource 7: Some water source



Source: earthkids.tv

12. In water scarcity regions, which of these actions is recommended to prevent severe water shotage?

- A. Water conservation
- B. Freshwater distribution
- C. Water waste
- D. Water use for recreation

	SL 1

13. Groundwater bodies such as the deep aquifers are considered;

- A. Renewable water resources
- B. Waste-water recycled resources
- C. Non-renewable water resources
- D. Subducted grew water resources

	SL 1

14. Which of the following is a multi-purpose river basin development in Samoa?

- A. Moata'a Samoa river to reef project
- B. Tafitoala and Fausaga hydro power plant
- C. Fuluasou hydro plant
- D. Alaoa Dam project

	SL 1

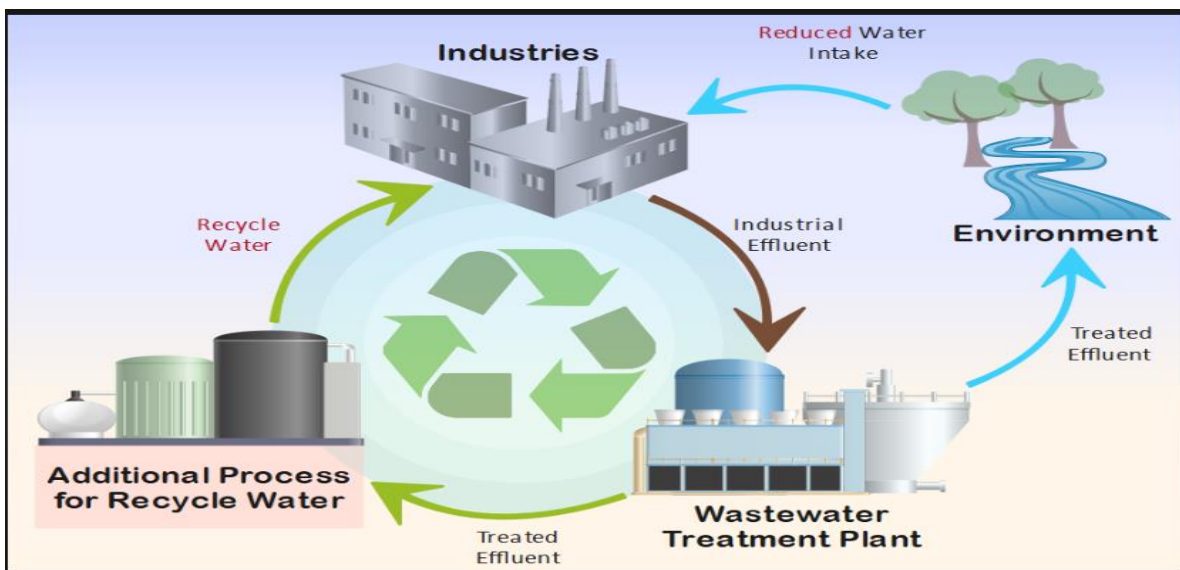
15. Which **ONE** of these Pacific Island countries is a freshwater-surplus country?

- A. Kiribati
- B. Papua New Guinea
- C. Tuvalu
- D. Marshall Islands

	SL 1

Use Resource 8 below and your knowledge to answer Question 16.

Resource 8: The re-use of water



Source: <https://www.albeadvance.com/products-services/iets-discharge-recycle-and-reuse-solution/>

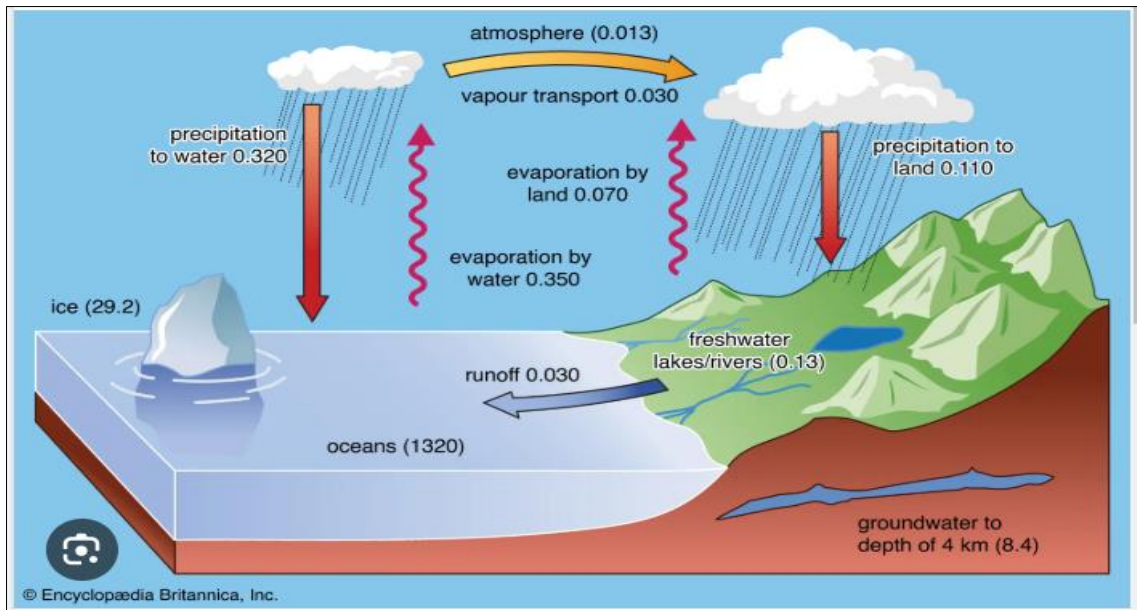
16. Which of these water uses helps to replenish the freshwater supply as it moves through the hydrological cycle?

- A. Domestic water uses like washing cars.
- B. Grey water that is used in agriculture.
- C. Water used in manufacturing produce for supermarkets.
- D. Transportation of goods and services on water bodies.

	SL 1

Use Resource 9 below and your knowledge to answer Questions 17 and 18.

Resource 9: Hydrosphere



Source: Britannica

17. Describe the global patterns of freshwater distribution.

SL 2

18. Freshwater is a limited resource in the Pacific Islands, and is under threat from a number of factors. Describe **ONE** method of storing excess water.

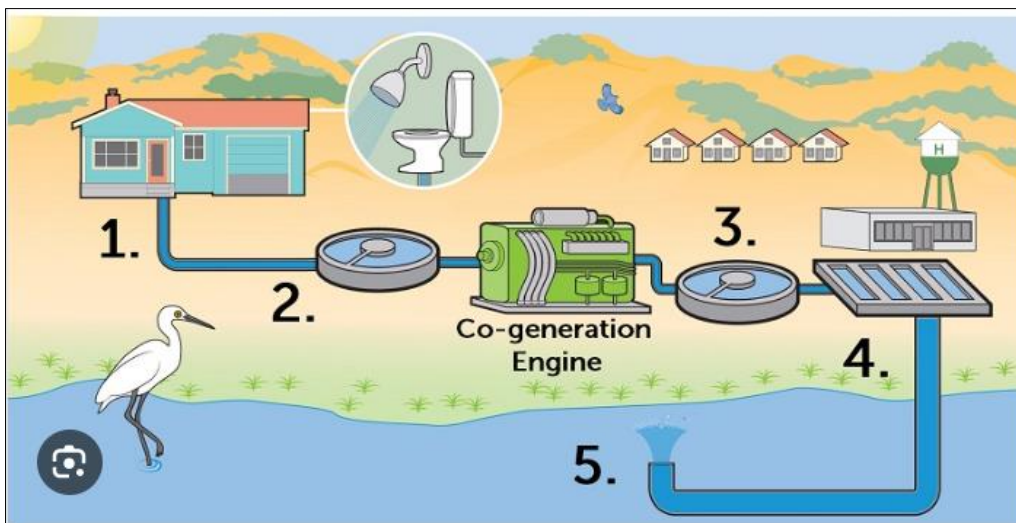
SL 2

19. Using an example, explain how people's perception of water as a resource varies from culture to culture.

SL 3

Use Resource 10 below and your knowledge to answer Question 20.

Resource 10: Waste Water Recycling



Source: City of Hayward

For Questions 22 to 26, choose and write the LETTER of the correct answer in the box provided.

22. Countries with high poverty rates, economic instability, and lack of essential human resources compared to the rest of the world, are generally called;

- A. Colonized countries.
- B. Developed countries.
- C. Third world countries.
- D. Minority countries.

SL 1

Use Resource 11 below and your knowledge to answer Questions 23 and 24.

Resource 11: Smart Urban Growth



Source: urbanplanninglife.com

23. Which of the following countries has a low proportion of population living in urban centres?

- A. Vanuatu
- B. Singapore
- C. Papua New Guinea
- D. Belgium

SL 1

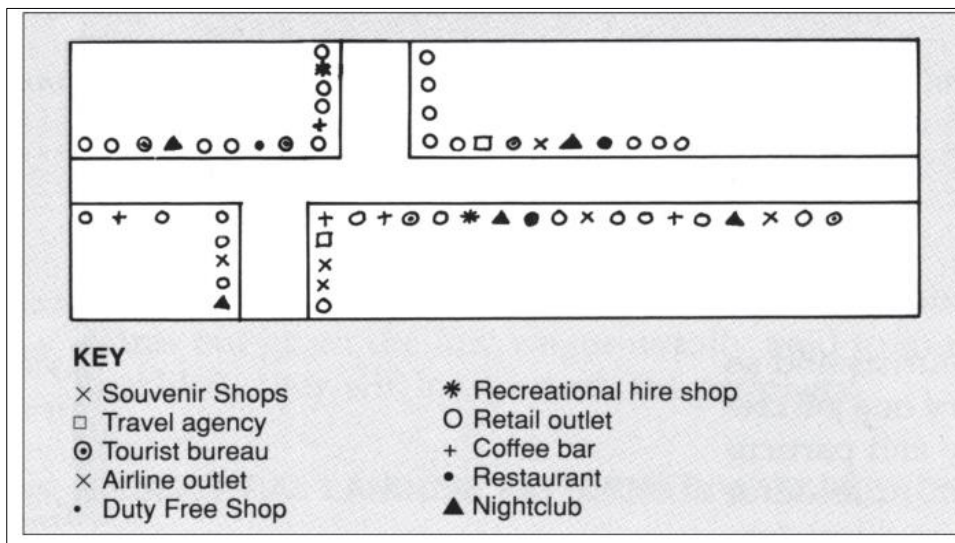
24. Which of the following is a fast-growing populated city?

- A. Avarua, Cook Islands
- B. Luanda, Angola
- C. Vatican City, Italy
- D. Port Villa, Vanuatu

SL 1

Use Resource 12 below and your knowledge to answer Questions 25 and 26.

Resource 12: A sample plan of an urban area



Source: MESC Textbook

25. Which of these features results from dividing a city into areas with specific regulations for land use, building heights, and population density?

- A. Urban sprawl
- B. Industrial area
- C. Dormitory suburbs
- D. Urban zones

SL 1

26. The planning, administering, regulating, and governing of populations living in urban areas is referred to as;

- A. Urban sprawl planning
- B. Urban management
- C. Rural zoning
- D. Satellite towns

SL 1

Use Resource 13 below and your knowledge to answer Questions 27 and 28.

Resource 13: Preserving Green Spaces Amid Urban Expansion



Source: environmentenergyleader.com

27. Describe **ONE** of the reasons for the evolution of urban zones as a city grows.

SL 2

28. Explain **ONE** effect of urban growth on a country.

SL 3

For Questions 32 to 36, choose and write the LETTER of the correct answer in the box provided.

32. A situation where modern technologies would connect all people worldwide is called;
- A. Globalization.
 - B. Development.
 - C. Global village.
 - D. 5G connectivity.

SL 1

Use Resource 15 below and your knowledge to answer Questions 33 and 34.

Resource 15: CHOGM delegates visited beautiful Samoa in 2024



Source: <https://www.samoatourism.org/>

33. Which government organization in Samoa is responsible for implementing our national tourism strategy?
- A. Ministry of Foreign Affairs and Trade
 - B. The Apia Tourism Agency
 - C. The Samoa Immigration Service
 - D. Samoa Tourism Authority

SL 1

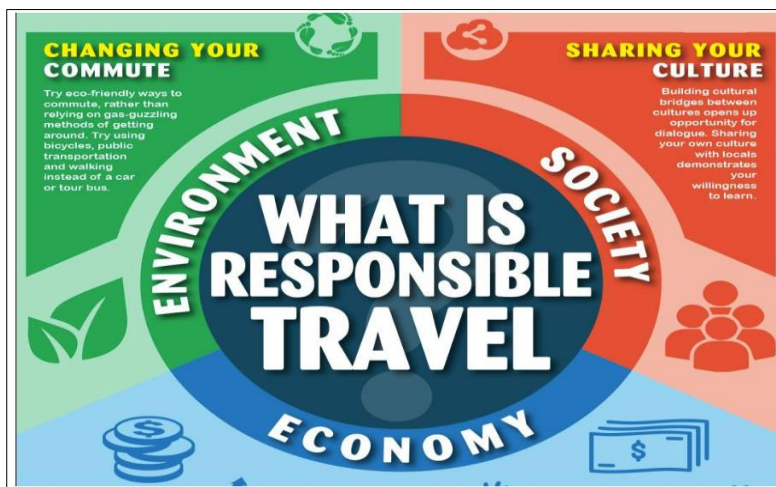
34. Who became the Minister of Tourism for Samoa in January 2025?

- A. Honourable Seu'ula Ioane Tuā'au.
- B. Honourable Toeolesulusulu Cedric Schuster.
- C. Honourable Fiame Naomi Mata'afa.
- D. Honourable Tuilaepa Sailele Malielegaoi.

	SL 1

Use Resource 16 below and your knowledge to answer Questions 35 and 36.

Resource 16: Responsible Tourism



Source: <https://www.switch-asia.eu/resource/what-is-responsible-travel/>

35. The type of tourism that is intended for the conservation, and the protection of natural and cultural areas is;

- A. Ecotourism.
- B. Cultural tourism.
- C. Wildlife tourism.
- D. Educational tourism.

	SL 1

36. Which of the following is one of Samoa's ecotourism projects?

- A. Manumea Protection Campaign in Fagalii.
- B. Lake Lanoto'o National Park.
- C. Samoa Conservation Society.
- D. Alaoa Giant Clam Sanctuary.

	SL 1

Use Resource 17 below and your knowledge to answer Questions 37 to 39.

Resource 17: Some tourist attractions in Samoa



Source: Samoa.travel/

37. Describe **ONE** of the roles of the government organization responsible for tourism in Samoa.

SL 2

38. Explain how **ONE** negative impact of tourism could influence lives in the Samoan community.

SL 3

39. Explain **ONE** of the benefits of ecotourism for Samoa and its people.

SL 3

Use Resource 18 below and your knowledge to answer Question 40.

Resource 18: Moving goods across the globe



Source: Bloomberg

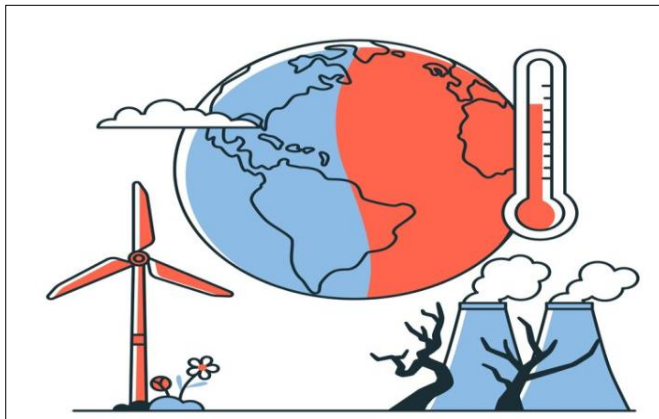
40. Explain the relationship between globalization and development.

SL 3

For Questions 42 to 46, choose and write the LETTER of the correct answer in the box provided.

Use Resource 19 below and your knowledge to answer Questions 42 to 47.

Resource 19: Climate change concept illustration



Source: freepik.com

42. The process whereby greenhouse gases in the earth's atmosphere trap heat from the sun and prevent it from escaping into space is called;

- A. climate change mitigation.
- B. greenhouse effect.
- C. El Nino phenomenon.
- D. atmospheric systems.

SL 1

43. The various ways intended to adjust and reduce the negative impacts of climate change on communities is called;

- A. Climate change adaptation strategies.
- B. Climate change mitigation strategies.
- C. Climate resilience home guidelines.
- D. Transmission Control Protocol.

SL 1

44. Which of the following is a climate change adaptation strategy?

- A. Conserving water and energy.
- B. Removing carbon dioxide from the atmosphere.
- C. Coastal infrastructure management.
- D. Increase in the use of renewable energy.

SL 1

45. Which of the following could be a result of climate change in the Pacific region?

- A. Increase threat to food security and wellbeing.
- B. Improvement in Pacific Islanders' livelihoods, food security and culture.
- C. Increase in urbanisation and the use of building codes.
- D. Climate change adaptation.

SL 1

46. Which of these represents a different perspective about climate change?

- A. Financial view
- B. Environmental view
- C. Food security view
- D. Religious view

SL 1

47. List **TWO** factors that contribute to climate change.

SL 2

Use Resource 20 below and your knowledge to answer Questions 48 and 49.

Resource 20: Climate change phenomenon



Source: freepik.com

STUDENT EDUCATION NUMBER									

SSLC GEOGRAPHY

2025

(For Scorer only)

STRANDS		Weighting	Scores	Check Scorer	AED Check
STRAND 1	PHYSICAL ENVIRONMENT	20			
STRAND 2	RESOURCES AND THEIR USES	20			
STRAND 3	POPULATION AND SETTLEMENT	20			
STRAND 4	GLOBALISATION AND TOURISM	20			
STRAND 5	ENVIRONMENTAL ISSUES	20			
TOTAL		100			