

---

SAMOA NATIONAL ASSESSMENT OF PRIMARY EDUCATION

---

2025  
YEAR 8

---

SOCIAL STUDIES

---

**MULTIPLE CHOICE TEST**

Time Allowed: 120 minutes (2 hours)

**INSTRUCTIONS:**

1. You have 10 minutes reading time before you start writing.
2. Check that you have a separate Answer Sheet.
3. Check that all your information on the Answer Sheet is correct.
4. Use the Answer Sheet for **ALL ANSWERS**. Read each question carefully before using the Answer Sheet to mark your response (A, B, C or D).
5. Completely shade the circle like this:  and NOT like this:
6. **DO NOT WRITE ANSWERS IN THIS BOOKLET.**
7. This paper has 60 multiple choice questions.

SOCIAL STUDIES CURRICULUM		Pages	Number of Questions
STRAND 1	Society, Culture and Heritage	2 - 8	27
STRAND 2	Places and Environment	9 - 15	15
STRAND 3	Resources and Economic Activities	16 - 20	18
TOTAL			60

**CHECK!** That this booklet contains pages 2-20 in the right order.

**GIVE THIS BOOKLET AND ANSWER SHEET TO THE SUPERVISOR AT THE END OF THE EXAM.**

**DO NOT WRITE ANSWERS IN THIS BOOKLET. USE THE ANSWER SHEET.**

---

**STRAND 1**

**SOCIETY, CULTURE AND HERITAGE**

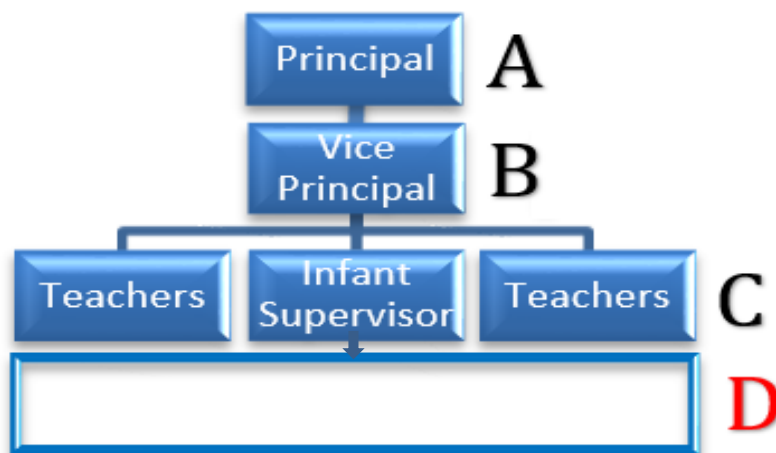
---

1. The Food and Agriculture Organisation [FAO] is an example of:
  - A. an international organisation in Samoa.
  - B. a community organisation in Samoa.
  - C. a national organisation in Samoa.
  - D. a church community in Samoa.
  
2. The Food and Agriculture Organisation's Headquarters is located in:
  - A. Amsterdam Netherlands.
  - B. Paris France.
  - C. Washington DC.
  - D. Rome Italy.
  
3. The United Nations Organisation's office in Samoa is located at:
  - A. Matāutu Apia.
  - B. Vaitele Uta.
  - C. Tuana'imato.
  - D. Moto'otua.
  
4. The main office of the SPREP in the Pacific is located in:
  - A. Amsterdam, Netherlands.
  - B. Paris, France.
  - C. Apia, Samoa.
  - D. Suva, Fiji.

5. The school teacher's responsibility in the community is to teach the students:
- A. spiritually.
  - B. culturally.
  - C. academically.
  - D. physically.
6. Which one of the following is a political party in New Zealand?
- A. Liberal Party.
  - B. Labour Party.
  - C. People's Party.
  - D. Tautua Samoa Party.
7. One of the main political parties in Samoa is:
- A. Tautua Samoa.
  - B. Samoa mo Samoa.
  - C. Samoa National Development.
  - D. Fa'atuatua i le Atua Samoa ua Tasi.
8. The leader of the HRPP in Samoa is:
- A. Tuila'epa Sa'ilele Malielegaoi.
  - B. La'aulialemalietoa Schmidt.
  - C. Fiamē Naomi Matā'afa.
  - D. Fonotoe Pierre Laufo.
9. Economic Reform can be defined as:
- A. producing new products and increase prices.
  - B. making better changes to help resolve economic issues.
  - C. convincing small businesses to remain open on Public Holidays.
  - D. encouraging customers to buy from the local businesses only.

10. Cultural Background refers to a:
- A. friend's religion.
  - B. new purchased land.
  - C. new adapted beliefs.
  - D. family values and beliefs.
11. The recent legal reform of the Land and Titles Court was in:
- A. 2020.
  - B. 2010.
  - C. 2022.
  - D. 2019.
12. The diagram below describes the structure of a Government School.

Who should be in box D?



source: designed from SmartArt - ATAFT

- A. Parents
- B. Caregivers
- C. Students
- D. Prefects

- 13.** One of the purposes of the SPREP is to:
- A. assist the Pacific communities along coastal areas only.
  - B. financially support people with disabilities in the Pacific.
  - C. provide resources for all schools in the Pacific region.
  - D. manage and protect the natural resources of the Pacific.
- 14.** The Food and Agriculture Organisation [FAO] in Samoa is helping to:
- A. plant taro and buy rice from other countries every day.
  - B. improve farming skills for overseas agricultural jobs.
  - C. better productive skills and agricultural system.
  - D. build enough storage for our local products.
- 15.** The UNESCO was established in 1945 in:
- A. London, United Kingdom.
  - B. Paris, France.
  - C. Washington DC, USA.
  - D. Wellington, New Zealand.
- 16.** Which of the following social issues is common in Samoa today?
- A. Poverty
  - B. Homelessness
  - C. Domestic Violence
  - D. Hunger
- 17.** Which of the following cultural events takes place in September in Samoa?
- A. Independence Celebration
  - B. White Sunday
  - C. Teuila Festival
  - D. Night Market

18. A purpose of the Teuila Festival in Samoa is:
- A. buying street food for dinner at the park.
  - B. showcasing our waterfront playground.
  - C. reviving and showcasing our traditions.
  - D. teaching and learning others' cultures.
19. A cultural impact of the Teuila Festival for the younger generation of Samoa is learning to:
- A. discipline in schools.
  - B. understand our history and culture.
  - C. sell produced goods for money.
  - D. meet new friends at the festival.
20. To perform in a Samoan mā'ulu'ulu, ladies must always wear:
- A. long skirts and sleeves.
  - B. 'ie faitaga and 'ula nifo.
  - C. short skirts and t-shirts.
  - D. puletasi and 'ula.

Use the resource below to answer Question 21.



Source: Talamua Online & Wikipedia – edited for use ATAFT.

21. Samoa's welcome ceremony is 'Ava while the Māori calls it:
- A. Manuhiri
  - B. Haka.
  - C. Powhiri.
  - D. Tēnā koe

Study the resource below to answer Question 22.



Source: [Google image](#) [S] [Scribd](#)

22. The resource above best describes:

- A. ethnocentrism.
- B. sportsmanship.
- C. companionship.
- D. good leadership.

Study the resource below to answer Question 23.



Source: [Google.com](#) Julien Forklin

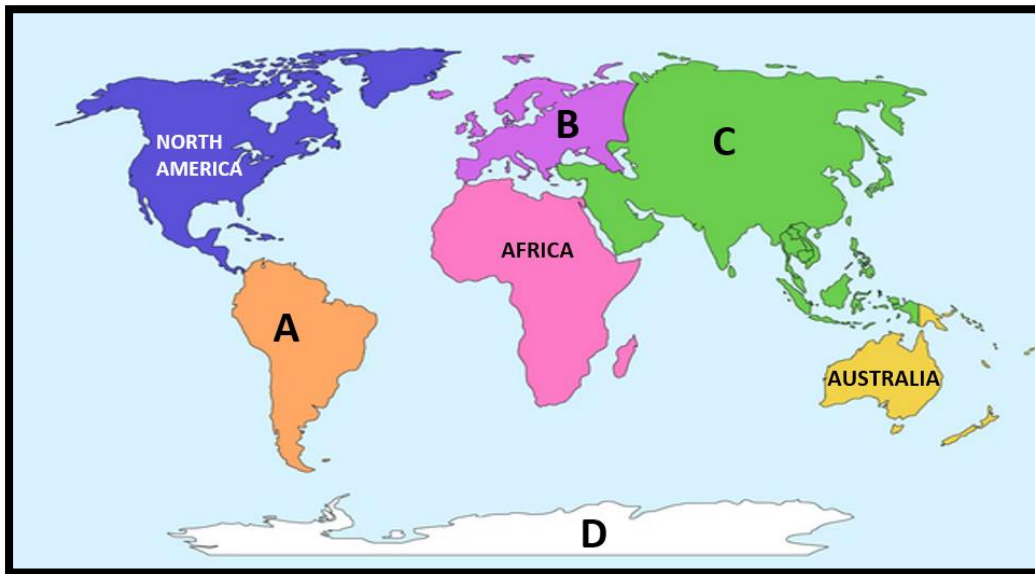
23. Ethnocentrism problems can only be overcome when we:

- A. put our families and children over others.
- B. run the societies with superior attitudes.
- C. put aside our beliefs and work together.
- D. paint all our hands and put them together.

- 24.** To provide an effective response to an issue we must:
- A. identify and understand the problem first.
  - B. solve it as quickly as possible.
  - C. hold it for a little longer.
  - D. share it with everybody.
- 25.** All students must attend school and to get good results, they:
- A. must get to school late every day.
  - B. should spend all their time playing.
  - C. must study extra hard in class.
  - D. should have good meals at school.
- 26.** One positive impact of SPREP for Samoa's marine life is that more:
- A. shells are sold to overseas markets.
  - B. marine protected areas are well secured for the future.
  - C. fishing licences are issued to others to fish in our waters.
  - D. fishing boats are built for future fishing.
- 27.** One way Samoa can express its cultural identity is through:
- A. making more cultural products to sell.
  - B. learning from other countries' cultural festivities.
  - C. competing with other cultures.
  - D. festivals to celebrate traditional food and dances.

- 28.** Crime is identified as one of the:
- A. social issues.
  - B. health issues.
  - C. economic issues.
  - D. religious issues.
- 29.** A Social Place can be a good space for:
- A. fishing vessels to be built.
  - B. junior youth to study.
  - C. everybody to meet others.
  - D. children only to play lape.
- 30.** The word Regulate in Social Studies can be defined as rules that:
- A. monitors shopkeepers' work.
  - B. guides social behaviour.
  - C. controls a rugby game.
  - D. directs travellers at the port.
- 31.** Treaties are defined as:
- A. barriers between two people.
  - B. sponsorship for a traveller.
  - C. disagreements between two people.
  - D. agreements made between two or more parties.

Use the resource below to answer Question 32.



Source: kami Library blank continent map. - edited for use ATAFT.

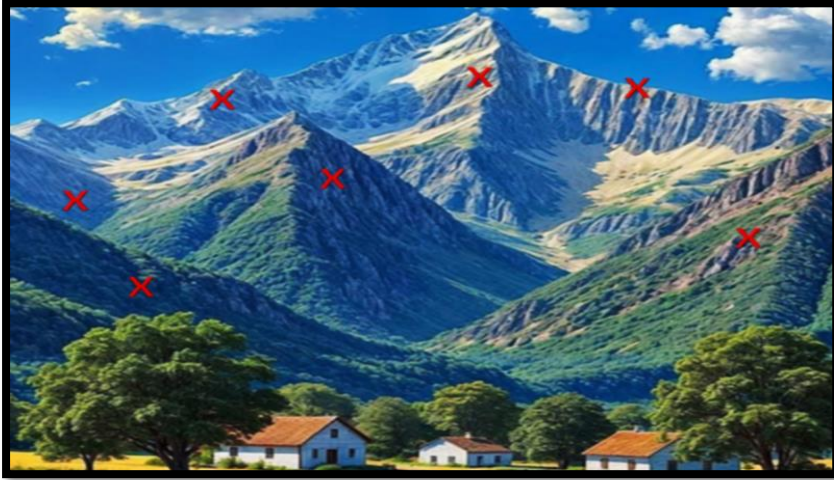
32. Name the continent D.

- A. Asia
- B. Antartica
- C. Africa
- D. Australia

33. The imaginary line that runs around the Earth halfway between the North and South Poles is known as the:

- A. parallel lines.
- B. longitude.
- C. equator.
- D. greenwich.

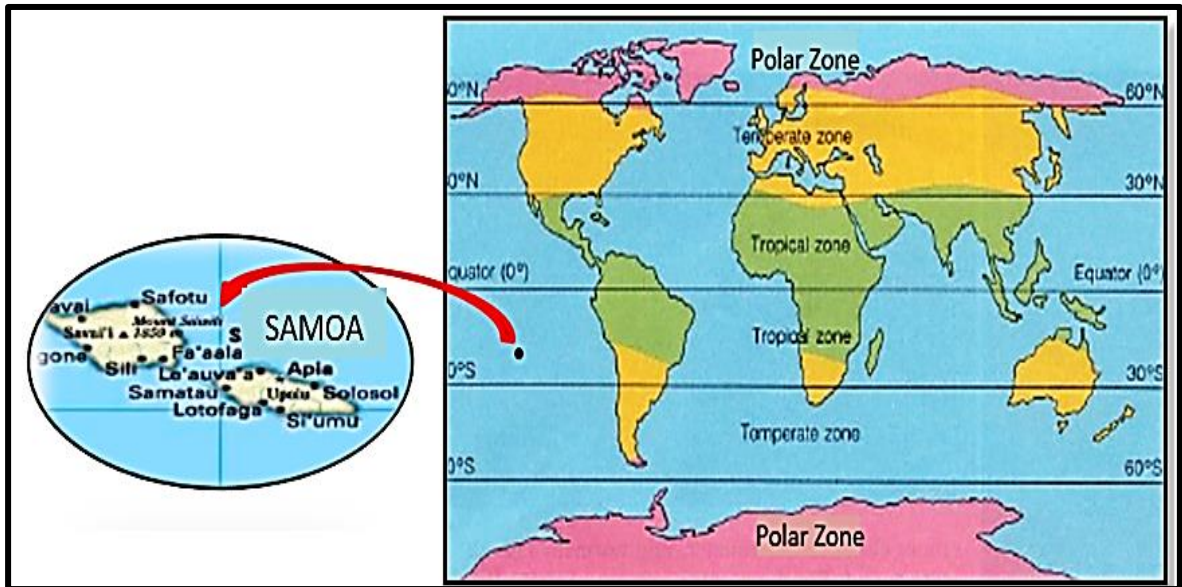
Use the resource below to answer Question 34.



Source: geographical features poster - Google Search- edited for use ATAFT

34. Name the feature of the landscape marked X.
- A. Mountains
  - B. Rivers
  - C. Lakes
  - D. Plains
35. The measurement of a location North or South of the Equator is called:
- A. longitude.
  - B. reflection.
  - C. revolution.
  - D. latitude.

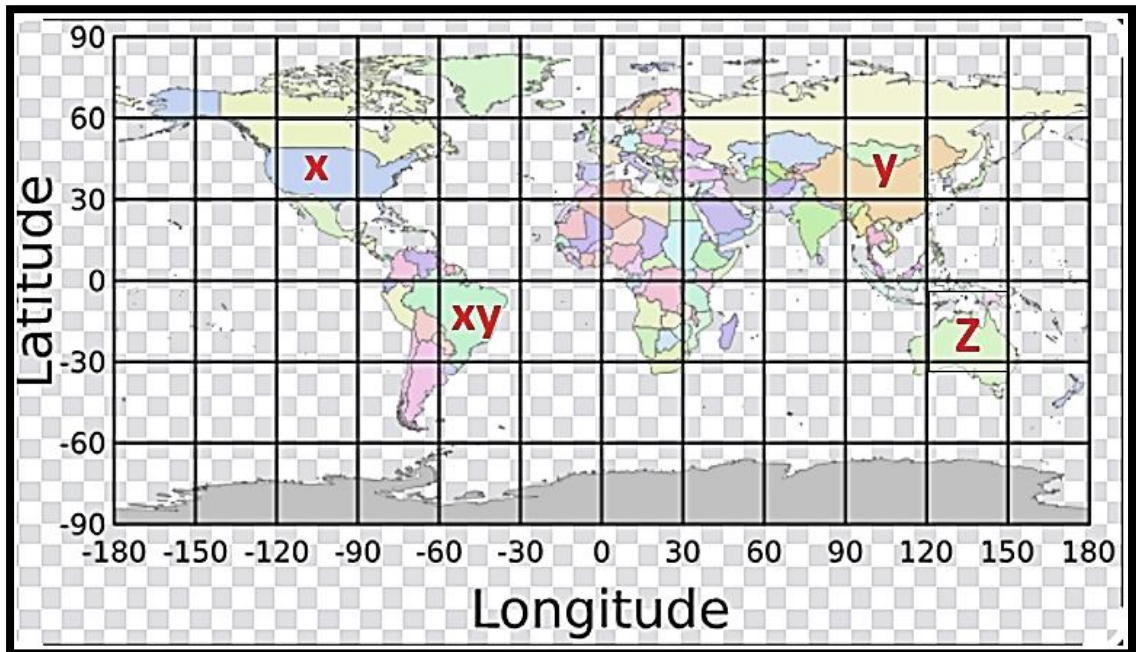
Refer to the resource below to answer Questions 36 and 37.



Source: [Pinterest](#) – [Google Search](#) - edited for use ATAFT

36. How do you describe the climate of the Polar Zone?
- A. Very hot all through the year.
  - B. Windy all through the year.
  - C. Warm all through the year.
  - D. Very cold all through the year.
37. The Samoan islands are located at the:
- A. Tropical zone.
  - B. Polar zone.
  - C. Temperate zone.
  - D. Tropic of Capricorn zone.

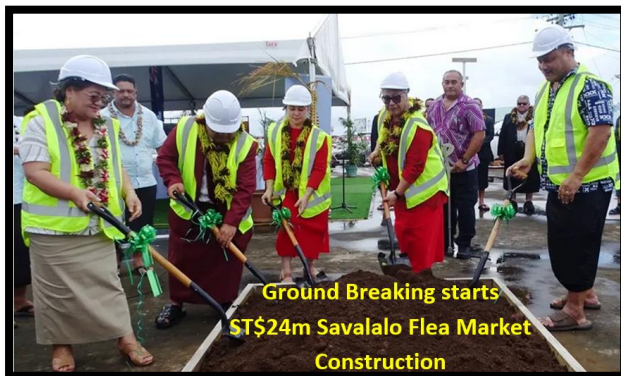
Study the map below to answer Question 38.



Source: Advanced Navigation – Geodetic Co-ordinate System - edited for use: ATAFT

38. What latitude is country **X** located?
- A. Between  $150^{\circ}$  east and  $120^{\circ}$  west.
  - B. Between  $150^{\circ}$  west and  $120^{\circ}$  east.
  - C. Between  $60^{\circ}$  north and  $30^{\circ}$  south.
  - D. Between  $-60^{\circ}$  south and  $-30^{\circ}$  north.

Use the resource below to answer Question 39.



Source: Talamua **ON LINE** News, March 6, 2024 By Lagi Keresoma - edited for use ATAFT.

39. One of the reasons for rebuilding this market at Savalalo is for:
- A. recreational activities and playground.
  - B. local producers to sell their products.
  - C. gamblers to meet and play their cards.
  - D. international producers to sell their products.

Study the photo below to answer Question 42.



Source: Samoa **Observer** – Recognising Mau Movement - edited for use ATAFT

40. Model A as shown in the photo is a symbol of Samoa's:
- A. cultural development.
  - B. economic growth .
  - C. history and independence.
  - D. foreign policy.

Use the resource below to answer Questions 40 and 41.



Source: [Soil Degradation AGRIVI](#) - edited for use ATAFT

41. Explain the negative impact of soil degradation for farmers.
- A. The soil is no longer productive for agricultural activities.
  - B. The fertilizer in the soil is too much for agriculture produce.
  - C. Agricultural products increase rapidly.
  - D. The soil quality for farming improves.
42. Soil degradation is a result of:
- A. soil fertility.
  - B. reforestation.
  - C. land for sale.
  - D. land overuse.

---

**STRAND 3: RESOURCES AND ECONOMIC ACTIVITIES**

---

- 43.** One of the products below is imported from New Zealand.
- A. Taro chips
  - B. Apples
  - C. Mangoes
  - D. Coconut oil
- 44.** Economic System can be defined as the:
- A. distribution of foreign aids to the needy areas.
  - B. provision of free service for the community.
  - C. promotion of returned products to the factories.
  - D. production and distribution of goods and services.
- 45.** Teaching resources are materials that help to:
- A. facilitate teaching.
  - B. speed up good exchange.
  - C. assist rugby coaches.
  - D. produce goods.
- 46.** An investor that puts money into a scheme for interest is known as a:
- A. consumer.
  - B. capitalist.
  - C. purchaser.
  - D. promoter.

Use the resource below to answer Question 47.



sources: [eHow](#)

[a Amazon.](#)

[www.integritytradeservices.com](http://www.integritytradeservices.com)

[Freepik](#)

47. Paper is primarily made from:
- A. coconut leaf.
  - B. banana leaf.
  - C. wood.
  - D. sand.
48. Which one of the following is made in Samoa and sold to other countries?
- A. Baby Oil.
  - B. Peanut Slab.
  - C. Banana Chips.
  - D. Potato Chips.
49. Industries in the Socialism Economic System are owned by the:
- A. workers.
  - B. government.
  - C. private sector.
  - D. business council.
50. Social policies are made by Governments to:
- A. identify children attending private schools in the villages.
  - B. increase medicine costs in the communities.
  - C. provide sufficient water for businesses in the communities.
  - D. identify and respond to issues affecting individuals and communities.

- 51.** The bakery is a good example of a producer in an economy because it:
- A. uses economical methods to recover loss during the lockdown.
  - B. makes and supplies food products available in the market.
  - C. makes arrangements for imported products exchange.
  - D. deals with money exchange and trades.
- 52.** The community can be very proud of someone who chooses to:
- A. commit crimes and communicates poorly with others.
  - B. act against the community's will.
  - C. being lazy at school and not doing well.
  - D. being kind with people in need.
- 53.** A consumer in business is an individual that:
- A. sells a product or service.
  - B. uses a product or service.
  - C. advertises a product or service.
  - D. produces a product or service.
- 54.** Education Policies are designed to make sure students have:
- A. a relevant curriculum for teaching and learning.
  - B. an insufficient amount of food available for everyone.
  - C. special funds for their national exam fees.
  - D. more practical work than attending class.
- 55.** A person's wealth is the total value of all assets owned by a/an:
- A. group.
  - B. community.
  - C. individual.
  - D. company.

- 56.** A Customer is dissatisfied when:
- A. the information on the products are clearly written.
  - B. products do not meet the user's expectations.
  - C. the consumer is well informed about the product.
  - D. a fair price is given to the right product.
- 57.** The best way to make the upset customer happy again regarding your service is:
- A. closing the shop and hide somewhere.
  - B. replacing the product with something else.
  - C. shouting at him louder than ever.
  - D. acknowledging his dissatisfaction.
- 58.** Children NOT attending school have a negative impact on the economy of a nation because:
- A. it affects sports development from growing into a new level.
  - B. the spread of life style diseases is faster than before.
  - C. it reduces productivity and slows down the economic development.
  - D. it increases issues in the town area at night time.
- 59.** The Government's intention to increase parking charges for Faleolo airport is to:
- A. improve facilities to meet international standards.
  - B. build a new international airport between Savai'i and Upolu.
  - C. increase employees salaries for overnight shifts.
  - D. to replace current parking meters lining along the car park.

Refer to the diagram below to answer Question 60.



Source: [Emito.net](http://Emito.net)

60. A Social Policy on Health for young children in a country's economic development is important because the children:
- A. must be taken to the hospital to see the doctor.
  - B. are easily affected by diseases.
  - C. are the future of a nation and must be well protected.
  - D. are the causes of many diseases in a country.