



MINISTRY OF
EDUCATION AND CULTURE

SAMOA NATIONAL ASSESSMENT OF PRIMARY EDUCATION

2025

SNAPE YEAR 8

SCIENCE

TIME: 2 HOURS

INSTRUCTIONS:

1. Check that you have a separate Answer Sheet.
2. Check all your information on the Answer Sheet is correct.
3. Use the Answer Sheet for **ALL ANSWERS**. Read each question carefully before using the Answer Sheet to mark your response (A, B, C or D).
4. Completely shade the circle like this: ● and **NOT** like this: ⊗ ⊘ ⊙ ⊚
5. **DO NOT** WRITE ANSWERS IN THIS BOOKLET.
6. This paper has 60 Multiple Choice questions.

SCIENCE CURRICULUM		PAGE	Number of Questions
STRAND 1	WORLD OF LIFE	2 – 5	17
STRAND 2	WORLD AND BEYOND	6 – 9	12
STRAND 3	WORLD OF MATERIALS	10 – 13	15
STRAND 4	WORLD OF PHYSICAL PHENOMENA	14 – 19	16
TOTAL			60

CHECK! That this booklet contains pages 2 - 19 in the right order.

AT THE END OF THE EXAMINATION GIVE THIS BOOKLET AND ANSWER SHEET TO THE SUPERVISOR

STRAND 1:

WORLD OF LIFE

1. Which of the following is a characteristic feature of insects?
 - A. They have fins.
 - B. They have eight legs.
 - C. They breathe through gills.
 - D. They have three body parts.

2. What do decomposers do in the soil community?
 - A. Eat plants.
 - B. Create sunlight.
 - C. Pollinate flowers.
 - D. Break down dead organisms.

3. Why is it important to protect forests in Samoa?
 - A. To catch more fish.
 - B. To reduce sunlight.
 - C. To help conserve water.
 - D. To increase water pollution.

4. What is one way to raise conservation awareness in your village?
 - A. Organize a cleanup.
 - B. Cut down trees.
 - C. Litter more.
 - D. Start a fire.

5. Insects breathe through tiny holes called:
 - A. gills.
 - B. pores.
 - C. lungs.
 - D. spiracles.

6. Which feature helps insects avoid predators?

- A. Sticky feet
- B. Loud sound
- C. Camouflage
- D. Bright colors

7. How does the structure of an insect's legs help it survive?

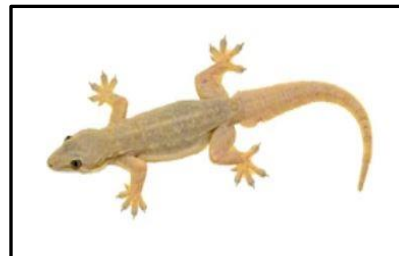
- A. They help it smell.
- B. They allow it to float.
- C. They make it fly higher.
- D. They help it move quickly.

8. Which of the following animals plays a part in the decomposition process?

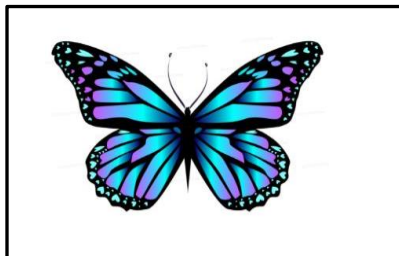
A. Earthworm



B. Lizard



C. Butterfly



D. Dog



9. The exoskeleton is important for insects because it:

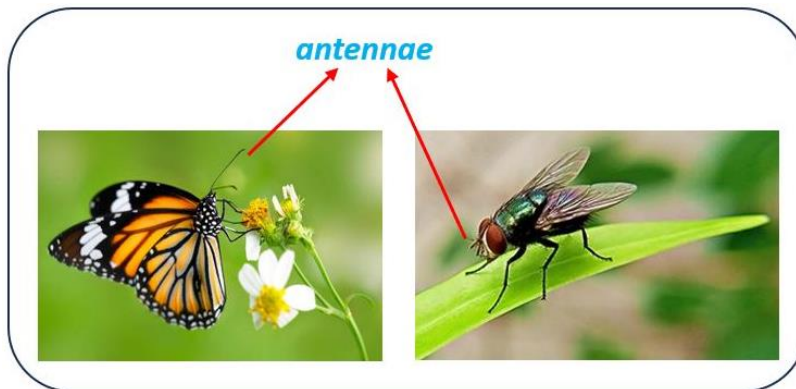
- A. absorbs nutrients.
- B. helps in breathing.
- C. helps them reproduce.
- D. provides structure and protection.

10. Why do desert insects often have light-colored bodies?
- A. To reflect heat
 - B. To attract mates
 - C. To absorb water
 - D. To absorb more sunlight
11. What is the role of fungi in a food web?
- A. Producers
 - B. Pollinators
 - C. Consumers
 - D. Decomposers
12. How does the conservation of forests help coral reefs?
- A. By preventing sedimentation
 - B. By increasing tree growth
 - C. By creating more rain
 - D. By making new roads
13. Which action would best support conservation efforts in Samoa?
- A. Using more plastic
 - B. Planting native trees
 - C. Cutting down forests
 - D. Throwing waste into rivers
14. What process allows plants to make food?
- A. Digestion
 - B. Respiration
 - C. Fermentation
 - D. Photosynthesis

15. What is one of the main products of photosynthesis that consumers rely on?

- A. Water
- B. Glucose
- C. Nitrogen
- D. Carbon dioxide

16. This image compares a fly and a butterfly in the same environment. Why does the one with longer antennae have an advantage?

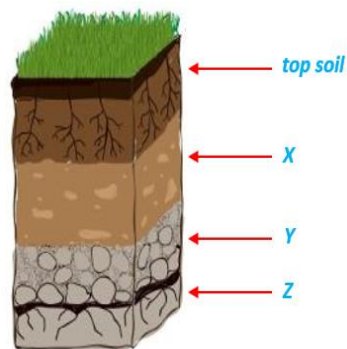


- A. It eats more.
- B. It sees better.
- C. It moves faster.
- D. It senses better.

17. Which of the following is an example of parasitism?

- A. Ticks feeding on a dog
- B. Crabs fighting for food
- C. Bees pollinating flowers
- D. Fish swimming in a school

Use the diagram of layers of soil shown below to answer Question 18.



18. The top soil is labelled in the diagram. Which layer contains more clay and minerals but less organic matter?
- A. X- Sub soil
 - B. Z -Bedrock
 - C. Organic Layer
 - D. Y- Parent material
19. A long-term impact of soil erosion can be:
- A. increase in soil nutrients and fertility.
 - B. improved crop production over time.
 - C. formation of new forest and vegetation.
 - D. loss of topsoil and reduced agricultural productivity.
20. In Samoa, which of the following is a traditional land use?
- A. Apple farming
 - B. Rice farming
 - C. Mining for gold
 - D. Plantation farming

21. Which of the following is a renewable resource?

A. Coal



B. Trees



C. Oil



D. Minerals



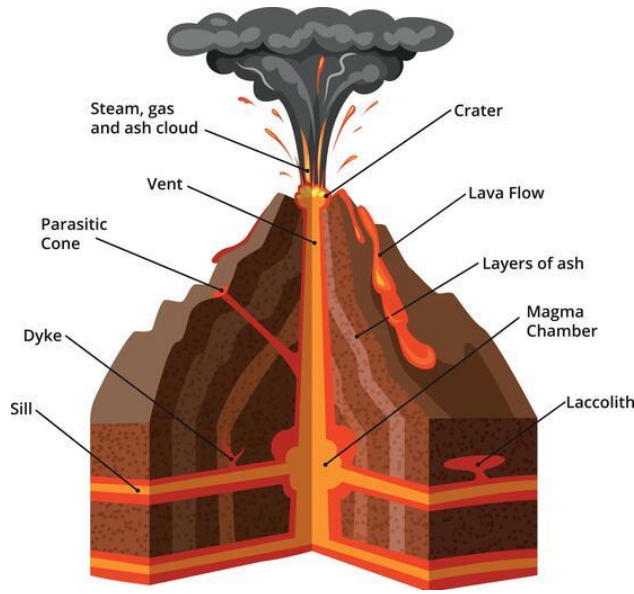
22. An example of a man-made resource is:

- A. water.
- B. steel.
- C. soil.
- D. air.

23. Plant roots help prevent soil erosion by:

- A. holding soil particles together.
- B. absorbing all the rainwater.
- C. increasing wind speed.
- D. making the soil dry.

Use the diagram below to answer Question 24.

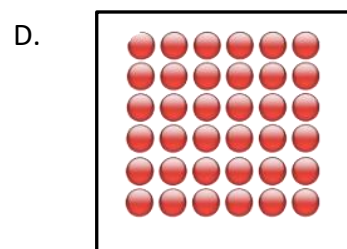
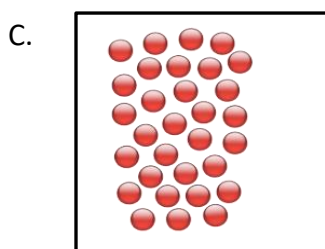
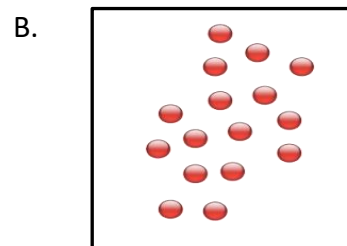
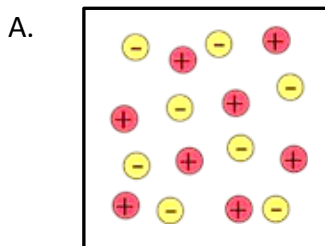


Source: U.S. Geological Survey. (2023). Cross-section of a stratovolcano. <https://www.usgs.gov/media/images/volcano-diagram>

24. Which part of the volcano stores molten rock before an eruption?
- A. Magma chamber
 - B. Layers of ash
 - C. Ash cloud
 - D. Crater
25. How can large volcanic eruptions affect global weather?
- A. They make it sunny everywhere.
 - B. They can cool the Earth's temperature.
 - C. They cause hurricanes and tsunamis.
 - D. They increase oxygen levels.
26. Earthquakes are caused by:
- A. strong wind and heat.
 - B. the movement of tectonic plates.
 - C. water boiling underground.
 - D. magnetic storms.

27. How can earthquakes change rivers or coastlines?
- A. They shift land.
 - B. They make waves.
 - C. They raise water temperature.
 - D. They stop all water movement.
28. Which of the following is a good reason to reduce non-renewable energy use?
- A. It makes cars run faster.
 - B. It increases the price of oil.
 - C. It keeps pollution levels high.
 - D. It helps save resources for the future.
29. A main environmental problem caused by overuse of non-renewable energy sources can be:
- A. too much sunlight.
 - B. loss of internet access.
 - C. air and water pollution.
 - D. increase in plant growth.

30. Why does coffee dissolve faster in hot water than in cold water?
- A. Hot water has less pressure.
 - B. Hot water particles move faster.
 - C. Cold water contains more solids.
 - D. Cold water is denser than coffee.
31. What property of metal is most affected by particle movement during heating?
- A. Size
 - B. Colour
 - C. Texture
 - D. Temperature
32. A substance with a low melting point suggests that its particles are:
- A. metallic and easily melted.
 - B. heavy and large.
 - C. strongly bonded together.
 - D. loosely held together.
33. Which of the following diagrams best represents the arrangement of particles in a liquid?

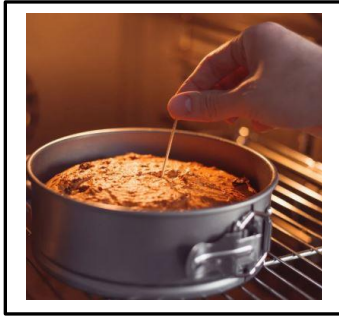


34. Which of these processes involves particles moving closer together?
- A. Boiling
 - B. Melting
 - C. Freezing
 - D. Evaporating
35. Air can be compressed because it/it's:
- A. is a liquid.
 - B. contains no particles.
 - C. is solid at room temperature.
 - D. particles can be forced closer together.
36. What causes iron to rust?
- A. Oxygen and water
 - B. Sunlight and water
 - C. Carbon dioxide and oxygen
 - D. Nitrogen and carbon dioxide
37. What gas is released to the air when wood or fuel is burned?
- A. Oxygen
 - B. Nitrogen
 - C. Hydrogen
 - D. Carbon dioxide
38. What is one of the main roles of the Earth's atmosphere?
- A. It makes gravity stronger.
 - B. It protects us from harmful rays.
 - C. It stops the Earth from spinning.
 - D. It creates ocean tides.

39. Which of the following is a result of air pollution?
- A. Increase in oxygen levels.
 - B. Decrease in greenhouse gases.
 - C. Breathing problems in humans.
 - D. Better crop growth.
40. Why is linking local environmental actions with global issues important?
- A. Students can be blamed for pollution.
 - B. Local actions contribute to global solutions.
 - C. Global issues are more important than local ones.
 - D. Because small actions don't affect global problems.
41. Which of the following mixtures makes stronger concrete?
- A. Water and sand
 - B. Stones and water
 - C. Sand and wood
 - D. Sand and stones
42. Salt water is not suitable for drinking because it:
- A. causes dehydration.
 - B. contains nutrients.
 - C. is filtered water.
 - D. is always cold.

43. Which of the following shows a permanent change in material properties?

A. Baking cake



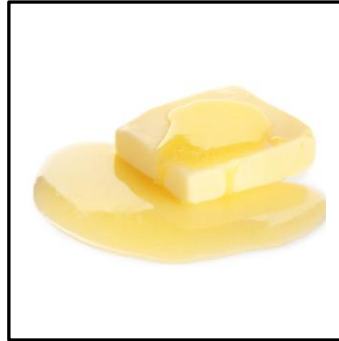
B. Freezing water



C. Boiling water



D. Melting butter

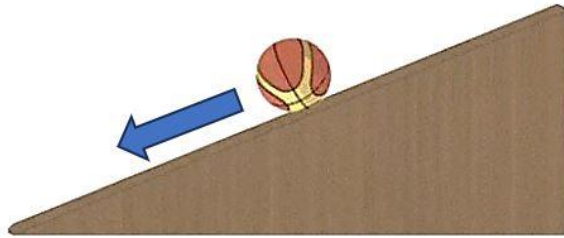


44. Which of the following is a man-made material that often causes pollution?

- A. Wood
- B. Plastic
- C. Water
- D. Soil

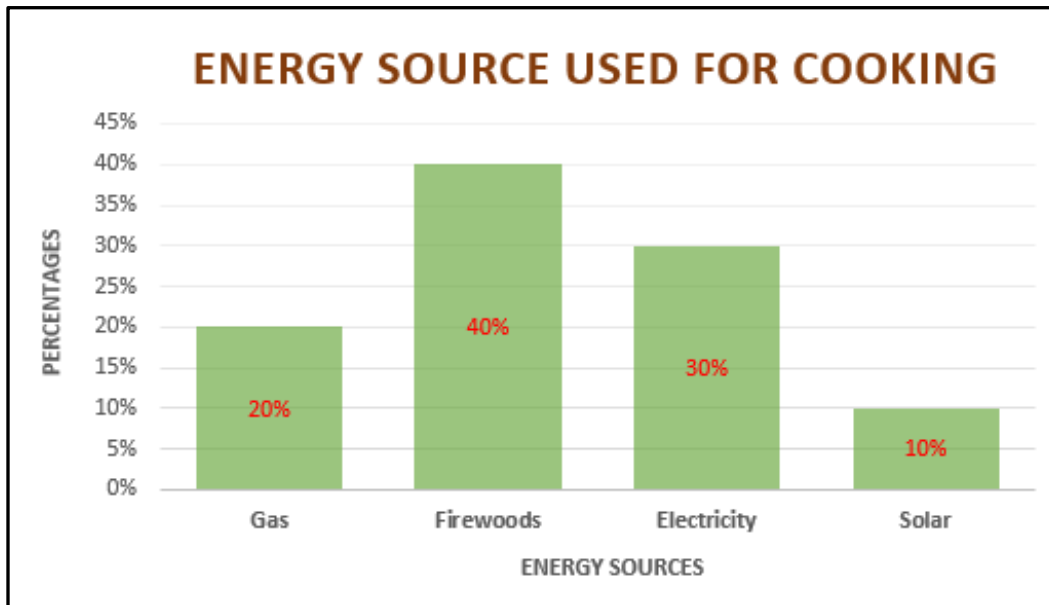
Use the diagram below to answer Questions 45 and 46.

The diagram shows a basketball rolling down a wooden ramp.



45. What force pulls the ball down the ramp?
- A. Magnetism
 - B. Friction
 - C. Gravity
 - D. Electricity
46. Which of these will make the ball roll faster?
- A. Lowering the ramp
 - B. Using a heavier ramp
 - C. Making the ramp steeper
 - D. Adding sandpaper to the ramp's surface
47. Why might a community choose wind turbines instead of a diesel generator for electricity?
- A. Diesel fuel is renewable
 - B. Wind turbines are louder
 - C. Wind energy is renewable
 - D. Wind turbines produce less energy

The graph below shows the percentage of energy sources used for cooking in a local community. Use it to answer Question 48.

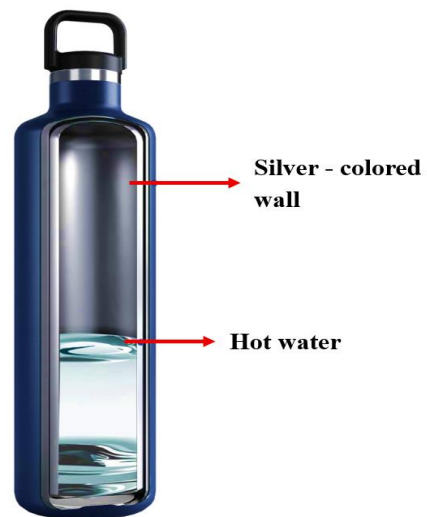


48. Which energy source is used the most for cooking?

- A. Gas
- B. Solar
- C. Firewoods
- D. Electricity

49. Why does the inside of a thermos flask have a shiny, silver-colored wall?

- A. To make the flask look nice
- B. To reflect heat back into the hot water
- C. To absorb heat from the hot water
- D. To cool down the hot water faster



50. Which of these is an example of how fuel energy is used in a home?

- A. Watching birds
- B. Cooking with gas
- C. Sweeping the floor
- D. Reading a book outside

51. What is the main energy source for the solar lights in the diagram below?



- A. Gas
- B. Sunlight
- C. Firewood
- D. Electricity

52. Glass or plastic is used as a cover in a solar device to:

- A. allow sunlight in and trap heat inside.
- B. block sunlight from entering inside.
- C. make it look nicer.
- D. cool it down.

53. Which of the following is an insulator of heat?

A. Iron nails



B. Gold



C. Copper



D. Glass



54. Which type of heat transfer does not require particles?

- A. Friction
- B. Radiation
- C. Convection
- D. Conduction

55. What are the two poles of a magnet called?

- A. Left and Right
- B. Top and Bottom
- C. North and South
- D. Positive and Negative

Use the diagram below to answer Questions 56 and 57.

56. Suppose Tomasi and Samu applied the same amount of force on the car as shown in the diagram below. What will happen to the motion of the car?



- A. The car will move sideways.
B. The car will not move.
C. The car will move towards the left.
D. The car will move towards the right.
57. What type of force is acting on the car?
- A. Balanced forces
B. Electrical forces
C. Unbalanced forces
D. Magnetic forces
58. What does a thermometer measure?
- A. Heat energy
B. Light intensity
C. Temperature
D. Air pressure

59. A student places one end of a metal rod in a flame, and the other end becomes hot quickly.

Which heat transfer method is this?



- A. Friction
B. Radiation
C. Convection
D. Conduction
60. Which of the following materials is attracted to a magnet?
- A. Plastic
B. Wood
C. Glass
D. Iron